

Phase 3 Key Questions

We want to hear from you! Participate and share your ideas, opinions, and knowledge to help us develop a Dundas that better reflects your needs. Comments will be considered in finalizing the Master Plan.

- 1 What do you see as the strengths of the draft recommendations?
- 2 Do you have any suggested refinements you would like considered? If so, what are they?
- 3 Do you have any other comments, feedback, or advice to share?

The deadline for Phase 3 feedback is **May 12, 2017**. You can provide feedback in person, online, by phone, or by e-mail. For more information, or to share your feedback, please visit [dundasconnects.ca](http://dundasconnects.ca), or contact:

Katie Ashbourne  
Community Engagement  
City of Mississauga  
300 City Centre Drive  
Mississauga, ON L5B 3C1  
[katie.ashbourne@mississauga.ca](mailto:katie.ashbourne@mississauga.ca)  
905-615-3200 ext. 4471

Next Steps

All feedback collected during Phase 3 will be used to inform the final Master Plan, which will be presented to the Mayor and Council in the fall of 2017.

MUNICIPAL CLASS ENVIRONMENTAL ASSESSMENT

The development of the Dundas Connects Master Plan is being conducted in compliance with Phases 1 and 2 of the Municipal Class Environmental Assessment process. We are now nearing the end of Phase 2 of this process, which will be the end of Dundas Connects.



While the Dundas Connects Study ends here, future work as part of the Municipal Class Environmental Assessment process will identify alternative designs and develop implementation plans to fully realize the vision for Dundas Street. There will be additional opportunities to provide feedback in these later stages of work.

#dundasconnects  
[dundasconnects.ca](http://dundasconnects.ca)

PHASE 3  
DISCUSSION GUIDE



Change is Coming to Dundas Street

Over the next 35 to 40 years, the number of people who live, work, learn, and travel along the corridor is expected to increase. To manage this change, the City is developing a Master Plan for Dundas Street. The Master Plan will cover all of Dundas Street within the City of Mississauga. It will shape the future look and feel of Dundas Street, focusing on transit, land use, and public space, and will make recommendations on:

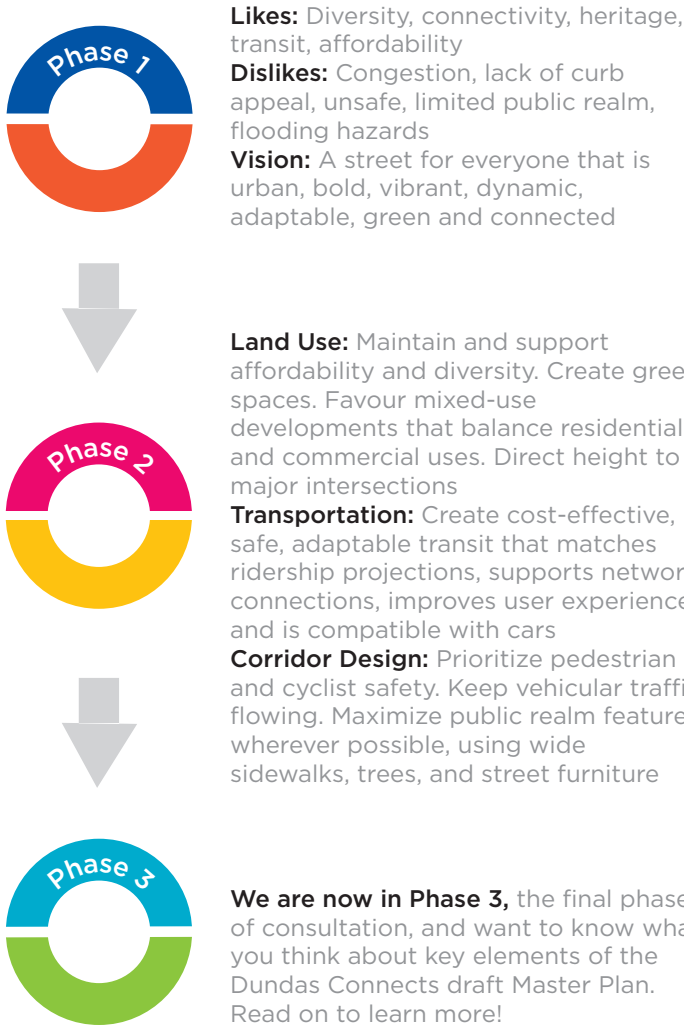
- A land use and urban design vision
- The appropriate type of transit
- Possible measures to mitigate flood constraints along the corridor
- Corridor and public realm design

A Shared Vision for the Future

Dundas Street will continue its evolution towards a dynamic urban rapid transit-served arterial that is walkable, bikeable, and accessible, with affordable options for living and shopping along the corridor. Integrated public spaces; community services; diverse, active storefronts; and an enhanced pedestrian experience will create a liveable street that supports new and current residents to live, work and play within the corridor. Dundas will be a safe and healthy place using a green and sustainable approach. The ravines and valleys that Dundas crosses will be recognized, celebrated, protected, and connected to the open space and pedestrian networks. Sustained by new and strengthened transportation options, Dundas will see substantial growth in population and employment, focused in redevelopment areas while preserving and protecting today’s stable residential communities. Dundas will connect with its surroundings on a neighborhood, city, and regional scale.

What We’ve Heard

Our three-phased consultation process began in early 2016. In Phase 1, we heard residents’ likes, dislikes, and hopes for the future, which helped shape a shared vision for Dundas Street. In Phase 2, we learned about public priorities for land use, transportation, and corridor design.

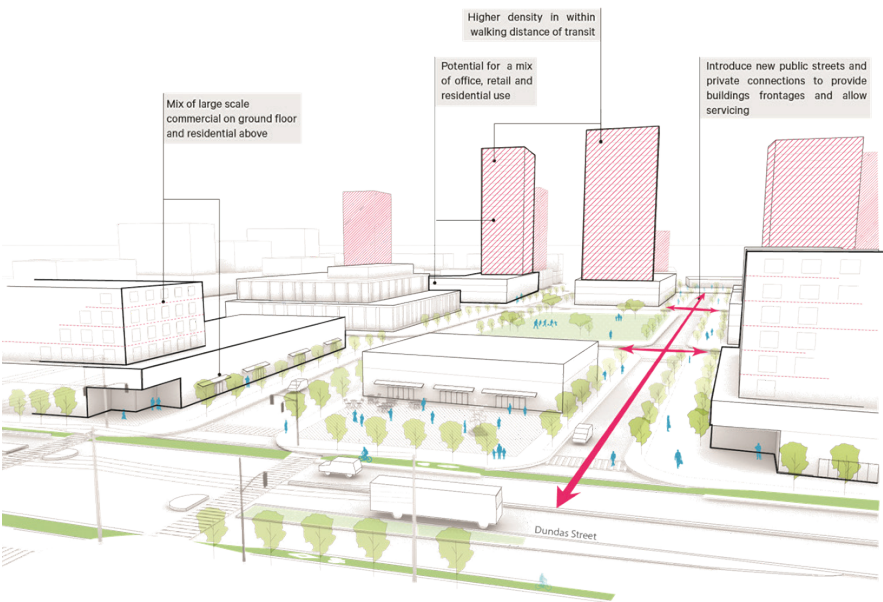


# Key Considerations

In this guide you will find information on land use, transportation, and corridor design. Recommendations for each of these considerations reflect public feedback, technical analysis, and best practices, and will form part of the final Master Plan.

## LAND USE & BUILT FORM

To support anticipated growth, land use will intensify in strategic areas, featuring a mix of uses within predominantly mid-rise buildings (5-12 storeys). New development will increase opportunities for parks and open spaces, and enhanced connectivity.



## Land Use & Built Form Recommendations

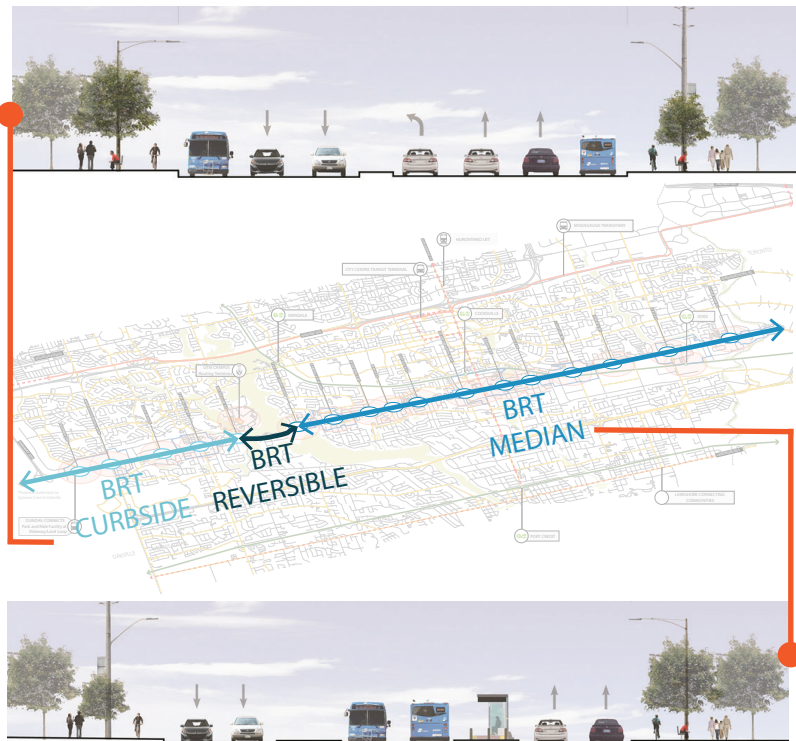
- 1 Encourage Mixed-Use, Transit-Supportive Intensification across Dundas Street
- 2 Plan for a Greater Level of Intensification in Focus Areas
- 3 Enhance Access and Connectivity
- 4 Create a Network of Open Spaces and Community Facilities
- 5 Maintain Existing, and Support New, Affordable Housing
- 6 Encourage Street-Related Retail, and Provide Supports To Maintain Existing Businesses

## Transportation Recommendations

- 1 Implement Bus Rapid Transit (BRT) along Dundas Street
- 2 Accommodate BRT on Dundas Street by Respecting Corridor Characteristics
- 3 Retain Local Bus Service
- 4 Maintain Minimum of Four Through-Traffic Lanes along Dundas Street
- 5 Introduce Branded Stops and Stations
- 6 Allow for Potential Direct Connections to GO
- 7 Ensure BRT Is Scalable for Future Transit Solutions
- 8 Create a Street That Connects to the Broader Transportation Network

# TRANSPORTATION

An improved transit system featuring Bus Rapid Transit (BRT) along Dundas Street is recommended. It will be future-oriented and adaptable, and will support connectivity, address congestion, and improve safety – all without overpaying. Subway and LRT were investigated, but ruled out as the projected ridership demand would not justify the high cost of implementation.



## CORRIDOR DESIGN

An improved public realm will safely accommodate pedestrians and cyclists while retaining a functional level of traffic capacity for vehicles and goods movement. Wider sidewalks with trees and street furniture, new local street connections, and continuous, protected cycling lanes will enhance the public realm experience of all corridor users.

## Corridor Design Recommendations

- 1 Create a Complete Street for All Users
- 2 Reallocate Road Space to Meet Projected Needs

- 3 Enhance Pedestrian Space
- 4 Provide Safe Cycling Infrastructure
- 5 Enhance Access
- 6 Coordinate with Utilities to Realize Streetscape Plan

