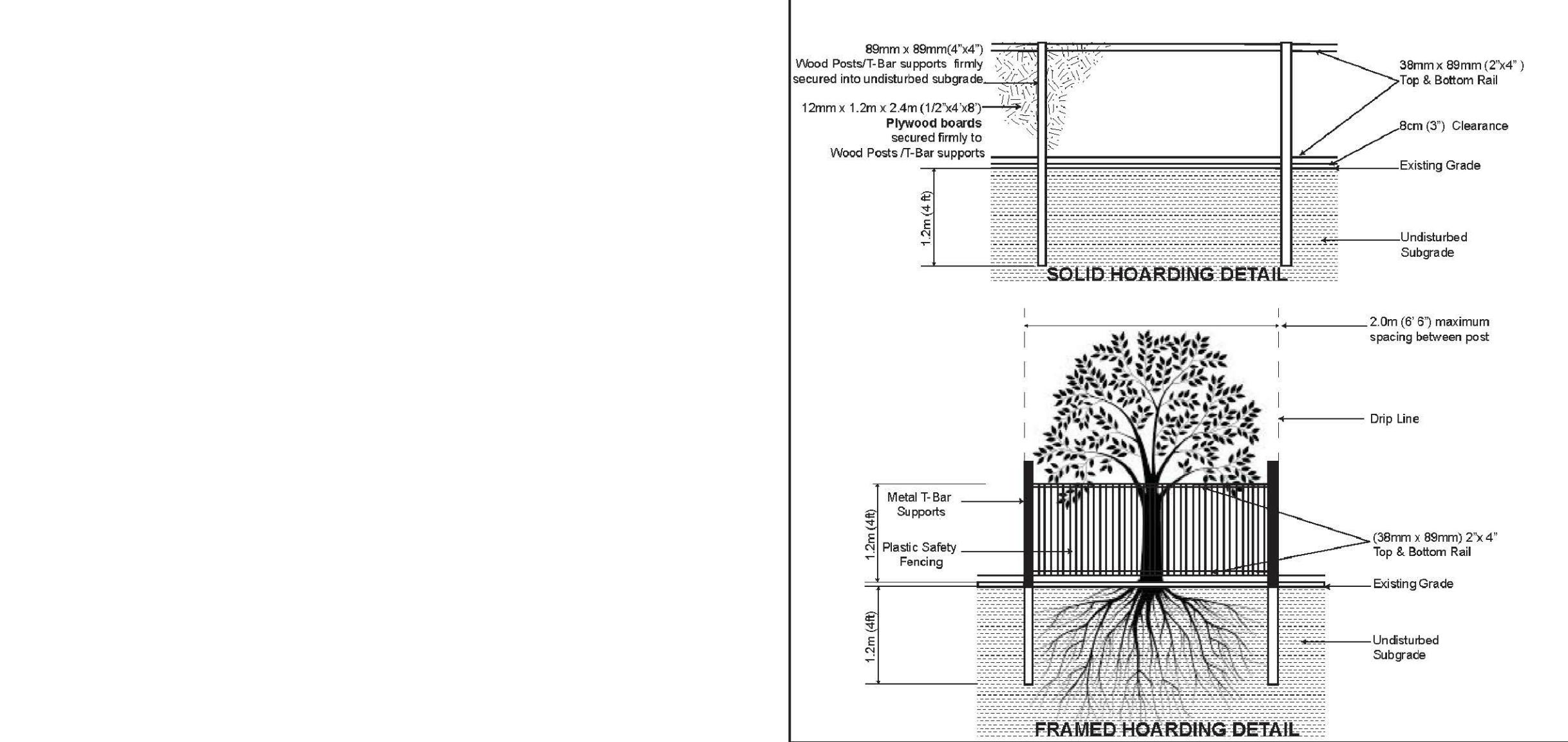


EXISTING TREE INVENTORY

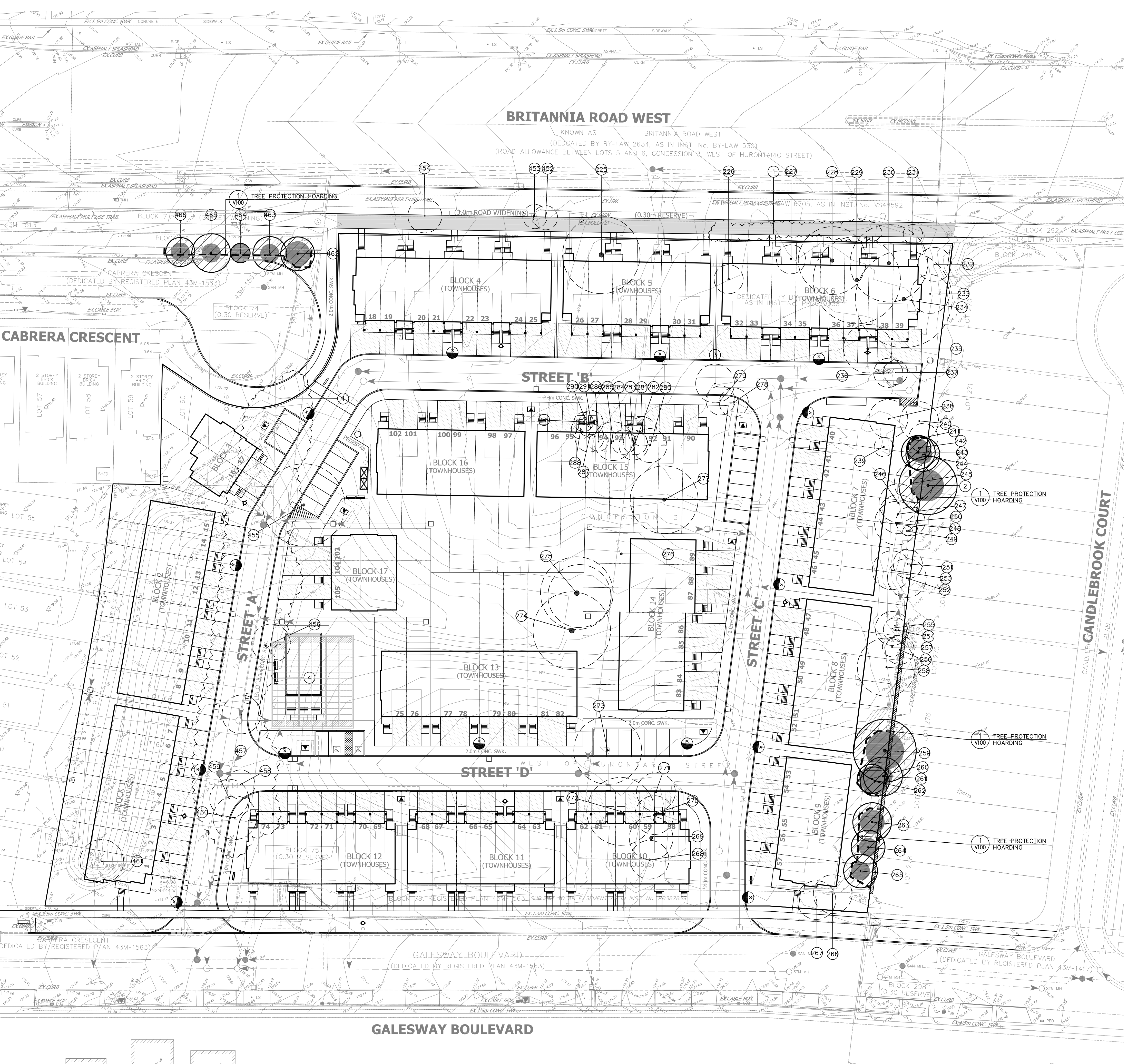
Table with columns: Tag No., Tree Species, Diameter (cm), Crown Dia. (m), Health G/F/P, Structure, Comments, ACTION, Action Tag No. Includes entries for Weeping Willow, Colorado Blue Spruce, Silver Maple, Juniper, etc.

NON-TAGGED TREES table with columns: Key #, Tree Species, Diameter (cm), Crown Dia. (m), Health G/F/P, Structure, Comments, Owner, Action Tag No.



NOTES: 1. Hoarding details to be determined following initial site inspection. 2. Private tree hoarding to be approved by Development & Design. 3. Hoarding must be supplied, installed and maintained by the applicant throughout all phases of construction.

TREE PRESERVATION HOARDING logo with MISSISSAUGA logo and a '1 V100' tree protection symbol.



GENERAL NOTES

- VERIFY ALL DIMENSIONS.
DO NOT SCALE DRAWINGS.
REPORT ANY DISCREPANCIES, DISCOVERED ERRORS, OR OMISSIONS TO THE LANDSCAPE ARCHITECT BEFORE PROCEEDING.

LEGEND: TREE PROTECTION HOARDING, EXISTING TREES TO BE PRESERVED, MINIMUM TREE PROTECTION ZONE (TPZ), VEGETATION NUMBER KEY.

Matthew C. Giesbrecht, Certified Arborist, ISA logo, Date: MARCH 2, 2021

Revision table with columns: No., DATE, REVISION, BY.

It is the responsibility of the Contractor and/or Owner to ensure that the drawings with the latest revisions are used for construction.

Professional logos for SBK (Strybos Barron King Landscape Architecture) and the Association of Landscape Professionals.

SBK logo, address: 5770 HURONTARIO STREET, SUITE 320 MISSISSAUGA, ONTARIO, L5R 3K5

PROJECT: BRITANNIA ROAD RESIDENTIAL DEVELOPMENT CONDOMINIUM TOWNHOUSES

DRAWING TITLE: EXISTING TREE INVENTORY AND PRESERVATION PLAN

Scale and project information table: SCALE: 1:400, PROJECT No. 20-5406, DATE: MARCH 2020, DRAWN BY: SS, CHECKED BY: BB, DRAWING No. V100