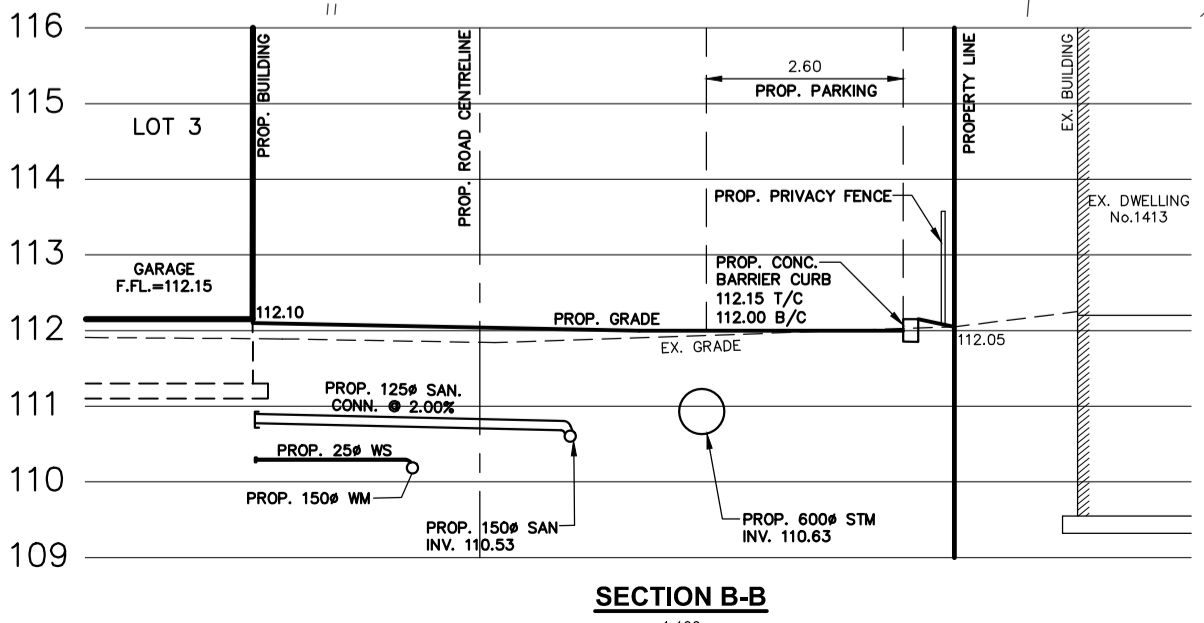


- LEGEND**
- 198.95 - EXISTING ELEVATION
  - (000.00) - EXISTING ELEVATION TO RAIN
  - 126.25 - PROPOSED ELEVATION
  - 2.0% - DIRECTION OF SURFACE FLOW
  - 000.00 - EXISTING CONTOURS
  - ➔ - EXISTING OVERLAND FLOW ROUTE
  - ➔ - PROPOSED OVERLAND FLOW ROUTE
  - - LIMIT OF PROPERTY

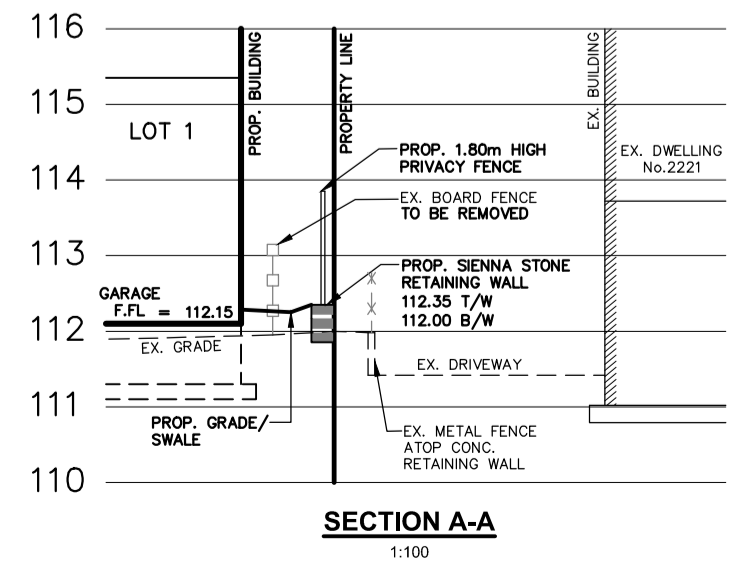
**BENCHMARK**  
 ELEVATIONS ARE REFERRED TO THE CITY OF MISSISSAUGA BENCHMARK NO. 351, LOCATED ON THE EAST FACE OF THE MAIN ENTRANCE OF APPLEWOOD PUBLIC SCHOOL ON THE WEST SIDE OF HARVEST DRIVE 30.48m SOUTH OF KENDALL ROAD, HAVING A PUBLISHED ELEVATION OF 108.675m.

**DIXIE ROAD**  
 (ROAD ALLOWANCE BETWEEN LOTS 5 AND 6, CONCESSION 1,  
 SOUTH OF DUNDAS STREET)  
 P.I.N. 13337-0811

**VENTA AVENUE** (BY REGISTERED PLAN 746) P.I.N. 13337-0612



CONDO ROAD PAVEMENT DESIGN	
40mm	HL3 TOP ASPHALT
85mm	HL8 BASE ASPHALT
300mm	20mm CRUSHER-RUN LIMESTONE
300mm	50mm CRUSHER-RUN LIMESTONE
625mm	TOTAL CONSTRUCTION DEPTH



**FOUNTAIN HILL CONSTRUCTION AND CONSULTING LTD.**

REV. JANUARY 2021  
 REV. AUGUST 2020  
 CITY FILE: OZ 20 02 W1

**SKIRA & ASSOCIATES LTD.**  
 CONSULTING ENGINEERS  
 3484 Semenyk Court, Suite 100, Mississauga, Ontario L5C 4P8  
 Tel. (905) 276-5100 Fax. (905) 270-1936 Email - info@skiraconsult.ca

**CONCEPT SITE GRADING**

PROJECT No. 219-M36	<b>FIGURE</b> <b>No. 6</b>
DATE - APRIL 2019	
SCALE - 1 : 200      DRAWN BY - M.C.	