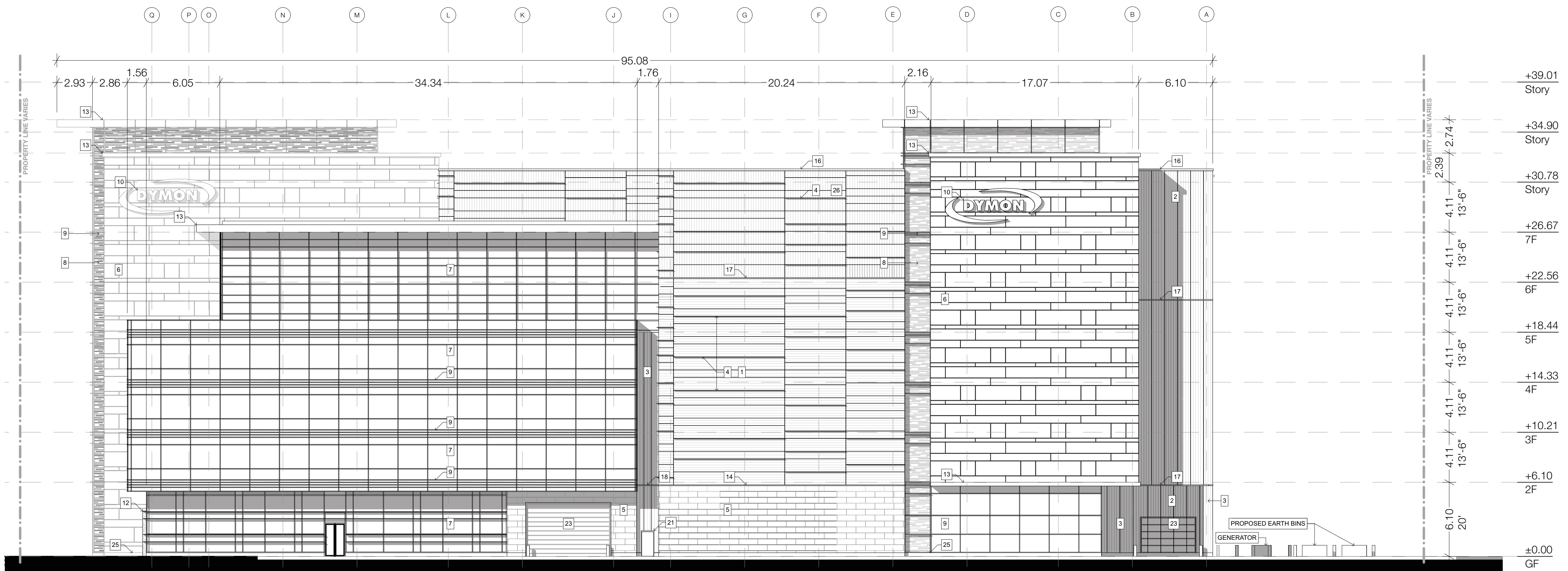
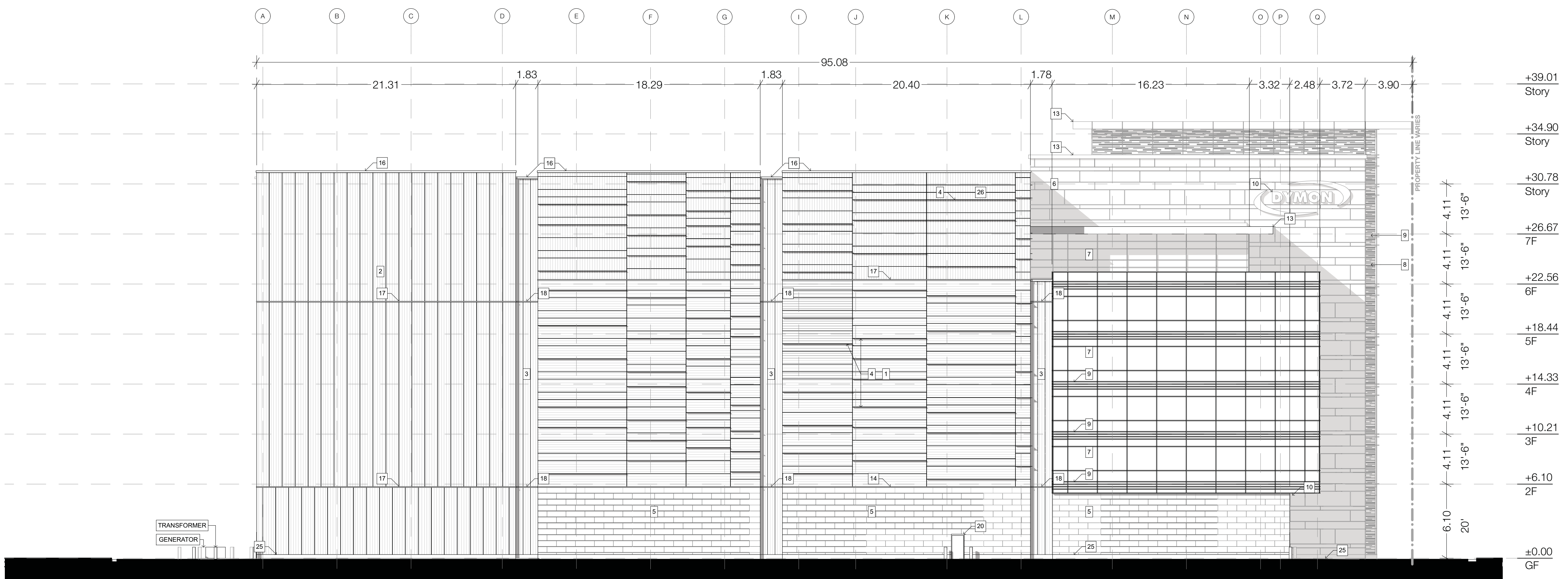


KEY PLAN
SCALE: 1:1000

- ### LEGEND
- 1 INSULATED METAL PANEL (IMP) SYSTEM - HORIZONTAL ORIENTATION - ARCHITECTURAL PROFILE - COLOUR: 'WEATHERED ZINC'
 - 2 INSULATED METAL PANEL (IMP) SYSTEM - VERTICAL ORIENTATION - 'LIGHT MESA' PROFILE - COLOUR: 'WEATHERED ZINC'
 - 3 INSULATED METAL PANEL (IMP) SYSTEM - VERTICAL ORIENTATION (RECESSES & REVEALS) - 'LIGHT MESA' PROFILE - COLOUR: 'MEDIUM BRONZE'
 - 4 KINGSPAN KARRIER FIN - STANDARD RECTANGLE FIN COLOUR: 'WEATHERED ZINC'
 - 5 3 1/2" ARCHITECTURAL MASONRY UNIT - ARISRAFT ADAIR LIMESTONE - FINISH: FINE DRESSED SEPA-VEINED - FLUNNING BOND
 - 6 ALUCOIL - ALUMINUM COMPOSITE MATERIAL - FINISH: 'LIGHT WEDGE' 4mm FR CORE
 - 7 CURTAIN WALL GLAZING - FINISH: VISION GLASS
 - 8 CURTAIN WALL GLAZING - FINISH: FRITTED WINDOW FILM ON VISION GLASS
 - 9 SPANDREL PANEL - COLOUR TO MATCH IMP 'WEATHERED ZINC'
 - 10 INTERNALLY LIT SIGNAGE - COLOUR: TBD
 - 11 GLASS SIGNAGE BAND - COLOUR: TBD
 - 12 BACK-LIT GLASS WITH FRIT PATTERN - COLOUR TO MATCH - 'BOLD BLUE' WITH WHITE FRITTING
 - 13 METAL CANOPY - COLOUR TO MATCH IMP 'WEATHERED ZINC'
 - 14 CONTINUOUS BENT FLASHING SILL - COLOUR TO MATCH IMP 'WEATHERED ZINC'
 - 15 CONTINUOUS BENT METAL CAP - PREFINISHED - COLOUR TO MATCH IMP 'MEDIUM BRONZE'
 - 16 FIRESTONE PREFINISHED METAL CAP - FINISH: 'SLATE GREY' (ALL BENT METAL CAP PARAPETS)
 - 17 PREFINISHED METAL IMP STACK JOINT COVER TRIM - COLOUR TO MATCH IMP 'WEATHERED ZINC'
 - 18 PREFINISHED METAL IMP STACK JOINT COVER TRIM - COLOUR TO MATCH IMP 'MEDIUM BRONZE'
 - 19 INSULATED HOLLOW METAL DOOR - COLOUR TO MATCH IMP 'WEATHERED ZINC'
 - 20 INSULATED HOLLOW METAL DOOR - COLOUR TO MATCH ARCHITECTURAL MASONRY UNIT 'ADAIR LIMESTONE'
 - 21 INSULATED HOLLOW METAL DOOR - COLOUR TO MATCH VERTICAL IMP 'MEDIUM BRONZE'
 - 22 HIGH SPEED ROLL-UP O/H DOOR - FINISH: STEEL FRAME WITH POLYCARBONATE VISION SLATS
 - 23 INSULATED O/H DOOR - COLOUR TO MATCH IMP 'WEATHERED ZINC'
 - 24 INSULATED O/H DOOR - COLOUR TO MATCH IMP 'MEDIUM BRONZE'
 - 25 POURED CONCRETE
 - 26 ALUMINUM COMPOSITE MATERIAL - HORIZONTAL ORIENTATION - COLOUR: 'WEATHERED ZINC' 4mm FR CORE



SOUTH ELEVATION



NORTH ELEVATION



Note: Building permit issuance shall be subject to the building permit drawings not being in contravention with these approved plans and drawings including, but not limited to, the exterior design of the building and exterior building materials.

Note: This drawing and all copyright therein are the sole and exclusive property of TACT Design Inc. Reproduction or use of this drawing in whole or in part by any means or in any way whatsoever without the prior written consent of TACT Design is strictly prohibited. Do not scale this drawing. Published Friday, November 13, 2020. File: 1611-25-6333 Hurontario St - V9.3.pln

design architect
TACT Architecture Inc.
600H College Street (Pier Line)
Toronto, Ontario M5G 1R8
416-516-1949
www.tactarchitecture.com

architect of record
nicholas caragianis architect inc.
27 Pamela Drive,
Toronto, Ontario M2C 3P6
416-516-0885
416-516-0886
info@nca.ca
www.nca.ca

job title & location
DYMON STORAGE
6333 Hurontario St
Mississauga, Ontario

client
Dymon Capital Corporation

project title
Elevations - North and South

issued
Friday, November 13, 2020

sheet number
1611-25

scale
1:200