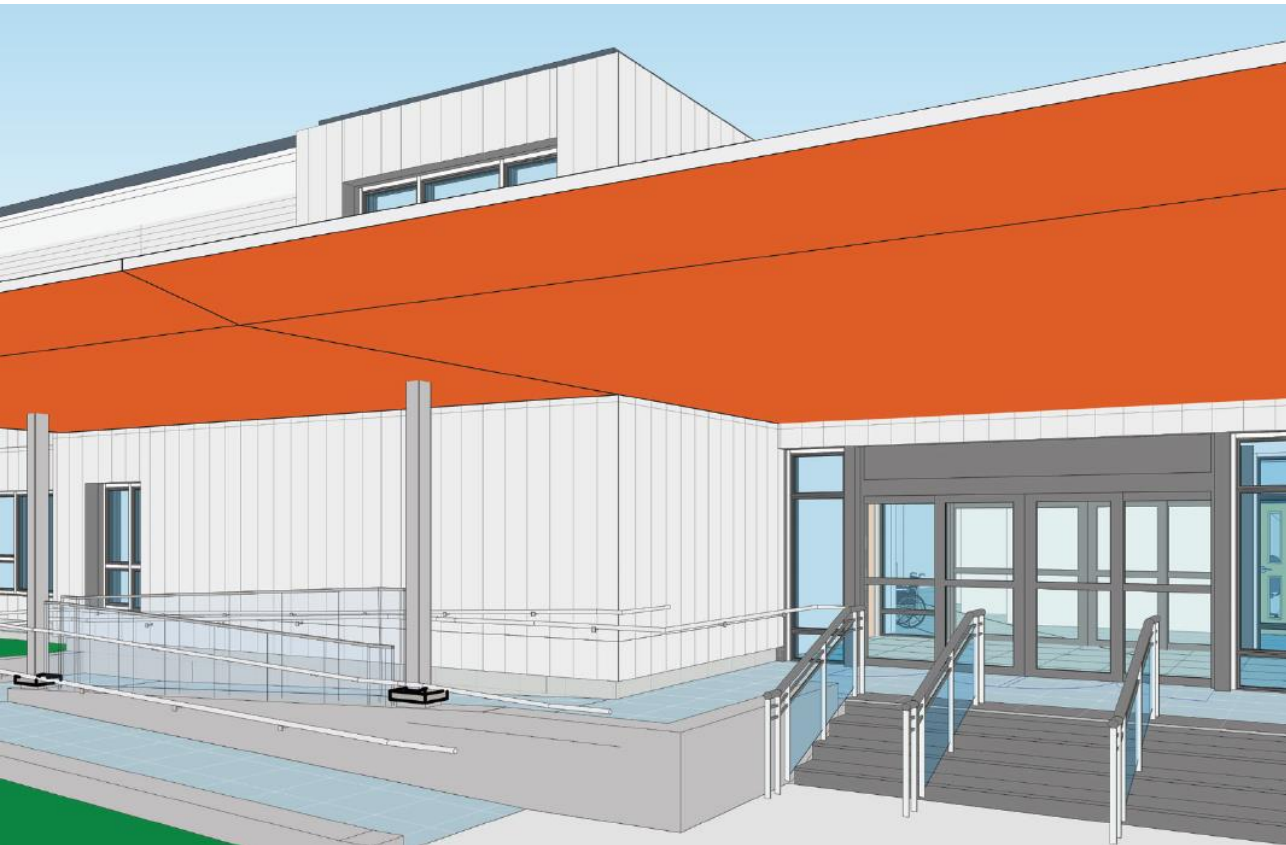


WORKING TOGETHER. MALTON HUB PROJECT.



*design subject to change

Malton Youth Hub Information Session

WELCOME

April 2021

Land Acknowledgment.

We would like to begin by acknowledging the land on which we gather, and which Services and Housing In the Province operates in the Region of Peel, is part of the Treaty Lands and Territory of the Mississaugas of the Credit. For thousands of years, Indigenous peoples inhabited and cared for this land.

In particular we acknowledge the territory of the Anishinabek, Huron-Wendat, Haudenosaunee and Ojibway/Chippewa peoples; the land that is home to the Metis; and most recently, the territory of the Mississaugas of the Credit First Nation who are direct descendants of the Mississaugas of the Credit.

We are grateful to have the opportunity to work on this land, and by doing so, give our respect to its first inhabitants.

Malton Youth Hub Project.

What we'll cover today:

- About SHIP
- How we got here
- Programming Opportunities
- Hub Amenities & Proposed Design
- Proposed Operating Model & Anchor Partner Selection
- Timelines
- Common Project Questions & Audience Q&A
- How to Connect with Us

Today's Panel.

Services and Housing In the Province (SHIP)

- Lesley Nagoda, Chief Operating Officer
- Lina Termini, Director of Operations
- Shirley Hannigan, Community Development Manager
- Shannan Smyth, Manager, Peel Youth Village, Angela's Place

City of Mississauga

- Kristina Zietsma, Director, Recreation
- Pat McNaughton, Manager, Malton Community Centre & Paul Coffey Arena
- Anna Cascioli, Senior Manager - Capital Design and Construction
- Arlene D'Costa, Supervisor, Business Planning Services

About SHIP.

Vision Quality Housing. Quality Services. Quality Lives.

Mission To increase quality of life through health services and housing supports that promote mental health, physical health, and wellness.

Guiding Principles – CHIRP

Compassion, Hope, Inclusion, Respect, Professionalism

Experience in community development and property management

- Peel Youth Village & Acorn Community
- Angela's Place
- Property Maintenance across multiple SHIP owned and community sites
- Community Development

How we got here.

Informed by:

- 2016 My Malton Community Vision
- 2018 Community Data Summary Report led by Region of Peel
- 2020 Community Consultations led by SHIP

Key findings 2020

SHIP Community Consultations



Welcoming and inclusive space for youth with access to:

Community Kitchen

Program Space and meeting rooms

Arts programs - performance stage, art studio, dance studio etc.

Employment counselling for youth

Housing services

Access to health services

Food security - lunch & cooking programs

Collaboration with youth-serving community partners

Office space, storage space

Why food ART community

Lack of things to do

28% of youth are not involved in any extracurricular activities

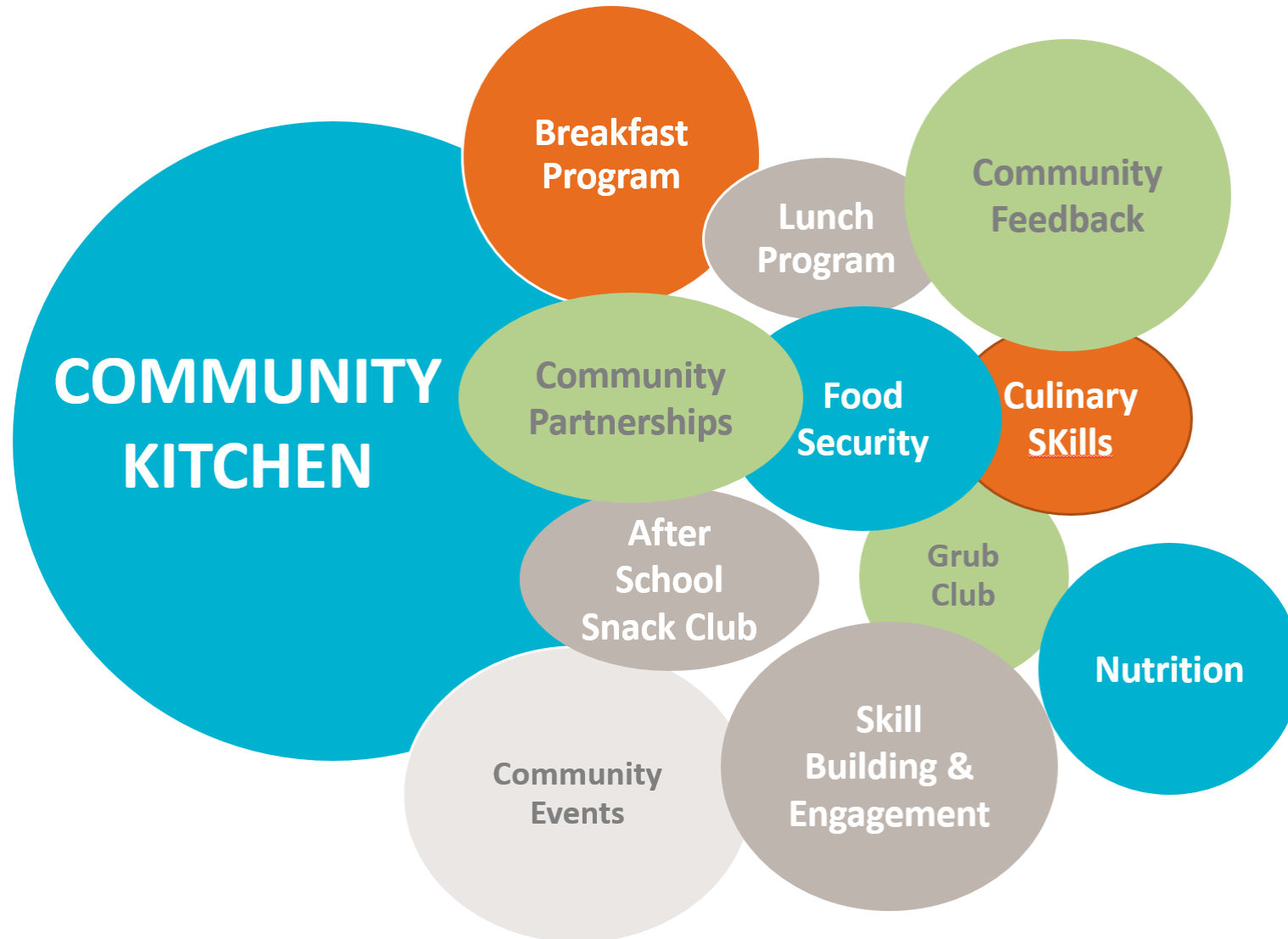
Lack of proximity to programs, transportation barriers, program costs

Lack of age appropriate activities

17% of youth feel current community programs are of interest to them

Ensure programs and services are culturally appropriate and reflect the interest of youth in the Community

FOOD, art, community



Program **OPPORTUNITIES**

Lunch
Breakfast
Nutrition
Family Cooking
Commerical Kitchen
Culinary Skills
Revenue opportunity
Local business use
Youth employment
Safe Food Handling

food, **ART**, community

Visual Arts

Performing Arts

Recording Arts

Spaces for art, creative art, music recording
Stage area for theatre, dramatic arts and spoken word

food, art, **COMMUNITY**

Education

Employment Services

Wellness

Mental and physical health services,
food and financial literacy

Proposed Features

- ## 1st Floor



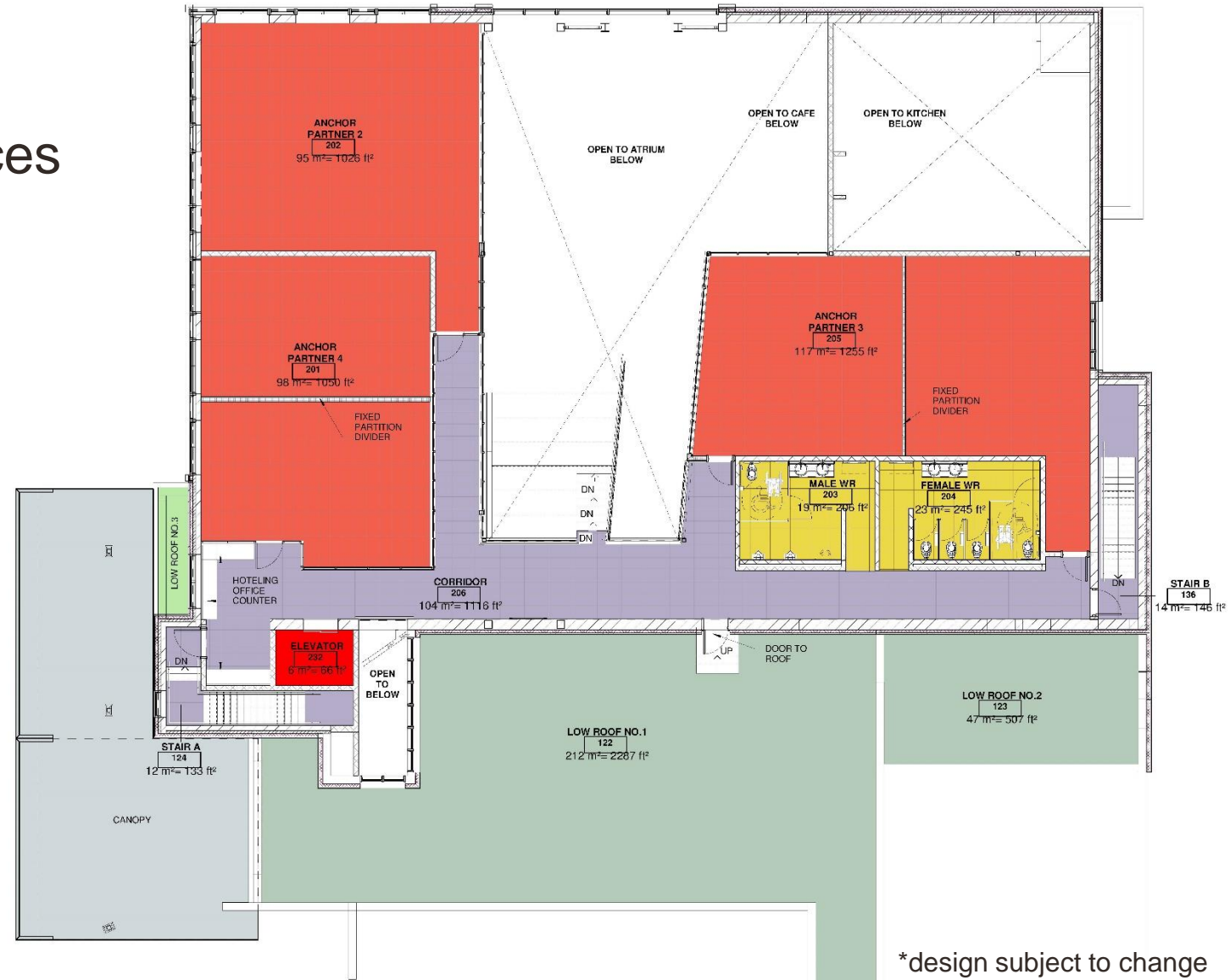
Proposed Design.

Proposed Features

- Anchor & Itinerant Partner Spaces
- Washrooms
- Elevator
- Wide stairs for gatherings



2nd Floor



*design subject to change

Proposed Operating Model

Anchor
Partner 1

Anchor
Partner 2

Anchor
Partner 3

Anchor
Partner 4

Anchor
Partner 5

Anchor
Partner 6

4-6 Anchor Partners will be selected to provide programs and services to the community.

A shared governance model will be used to manage and operate the Hub including Anchor Partner and Community Advisory Committees.

Anchor Partner Selection Process.

1

Issue RFEI*
June - July 2021

3

RFEI Closes
September 2021

2

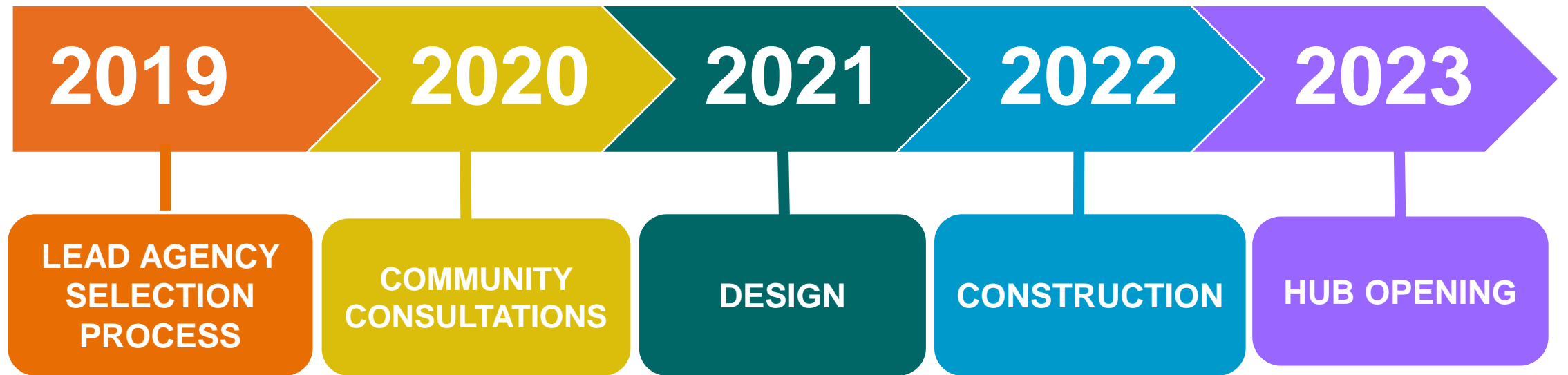
Information
Session
June-July 2021

4

RFP** Invitations
December 2021

**Request for Expression of Interest*

***Request for Proposal*



TIMELINES

Common Project Questions.

Q1 Will the services and programming offered by the agencies/anchor partners be free?

Q3 How long will the project be under construction?

Q2 What will be the difference between the Youth Wellness Hub & the Malton Community Centre cross the street, and the new Malton Youth Hub?

Q4 It looks like the design is a done deal, why are you reaching out to the community now?

Survey.

Visit mississauga.ca/maltonhub to take a short survey and share your feedback on the design of the Hub and program opportunities.

*We Want
to Hear
From You*



Malton Hub

Connect with SHIP and the City.

Questions, feedback, comments

1

Phone

905-795-8742

2

Email

SHIP - maltonhub@shipshey.ca
City - maltonhub@mississauga.ca

CLOSING REMARKS

Thank you for joining us.
