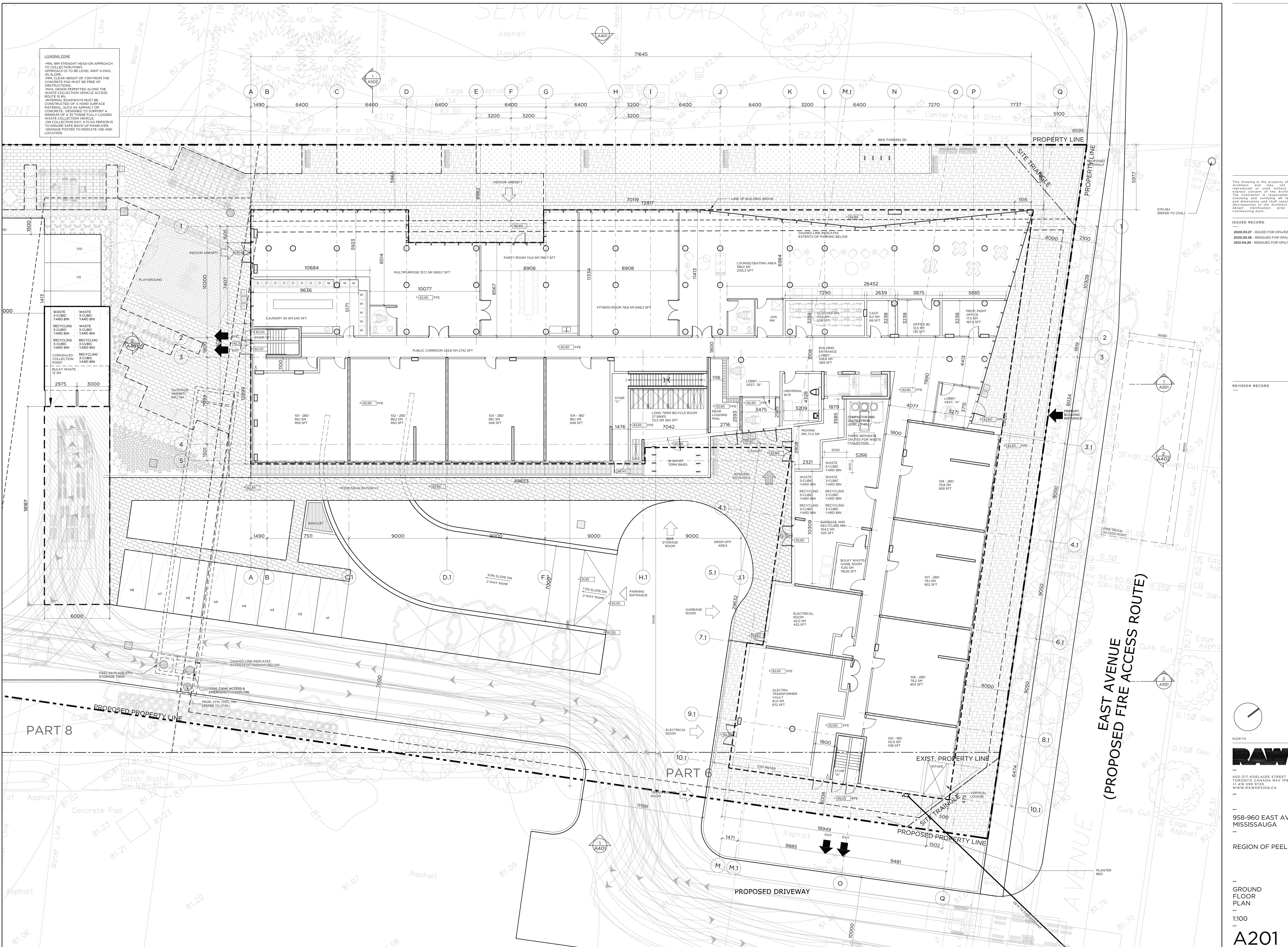


**LOADING ZONE**  
-MIN. 18M STRAIGHT HEAD-ON APPROACH TO COLLECTION POINT.  
-APPROACH IS TO BE LEVEL WITH A MAX. 2% SLOPE.  
-MIN. CLEAR HEIGHT OF 7.5M FROM THE CONCRETE PAD MUST BE FREE OF OBSTRUCTIONS.  
-MAX. GRADE PERMITTED ALONG THE WASTE COLLECTION VEHICLE ACCESS ROUTE IS 0%.  
-INTERNAL ROADWAYS MUST BE CONSTRUCTED OF A HARD SURFACE MATERIAL, SUCH AS ASPHALT OR CONCRETE, DESIGNED TO SUPPORT A MINIMUM OF A 33 TONN FULLY LOADED WASTE COLLECTION VEHICLE.  
-ON COLLECTION DAY, A FLAG PERSON IS TO ENSURE SAFE BACK-UP/MANUEVER STORAGE POSTED TO INDICATE USE AND LOCATION.

WASTE 3-CUBIC YARD BIN	WASTE 3-CUBIC YARD BIN
RECYCLING 3-CUBIC YARD BIN	RECYCLING 3-CUBIC YARD BIN
RECYCLING 3-CUBIC YARD BIN	RECYCLING 3-CUBIC YARD BIN
RECYCLING 3-CUBIC YARD BIN	RECYCLING 3-CUBIC YARD BIN
RECYCLING 3-CUBIC YARD BIN	RECYCLING 3-CUBIC YARD BIN
CONDENSED COLLECTION POINT	RECYCLING 3-CUBIC YARD BIN
BULKY WASTE 13 SM	

2975 3000



This drawing is the property of the Architect and may not be reproduced or used without the expressed consent of the Architect. The Contractor is responsible for checking and verifying all levels and dimensions and shall report all discrepancies to the Architect and obtain clarification prior to commencing work.

**ISSUED RECORD**  
2020.03.27 - ISSUED FOR OPA/RZ  
2020.05.26 - REISSUED FOR OPA/RZ  
2021.04.26 - REISSUED FOR OPA/RZ

**REVISION RECORD**

**RAW**  
405-317 ADELAIDE STREET WEST  
TORONTO CANADA M5V 1P9  
+1 416 539 9725  
WWW.RAWDESIGN.CA

958-960 EAST AVE.  
MISSISSAUGA  
REGION OF PEEL

GROUND FLOOR PLAN  
1:100  
**A201**

01/19/2026 958 East Ave Mississauga Drawings\Current\19006 958 East Ave Mississauga\_Architectural Drawing.dwg  
Monday, April 26, 2021 11:25:15 AM