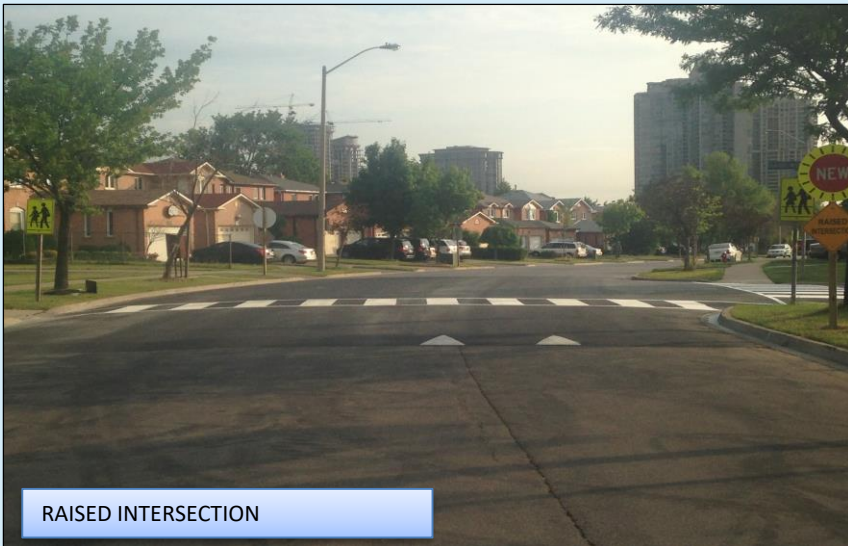
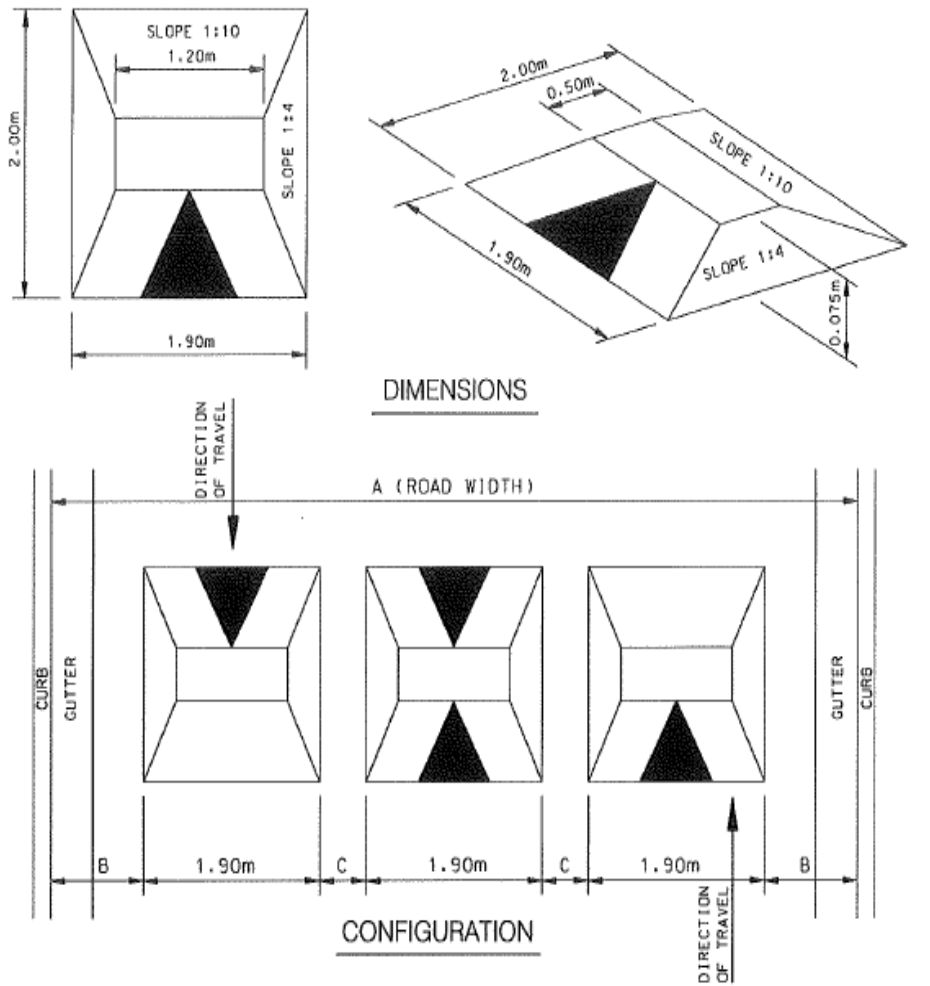


# TRAFFIC CALMING DEVICES

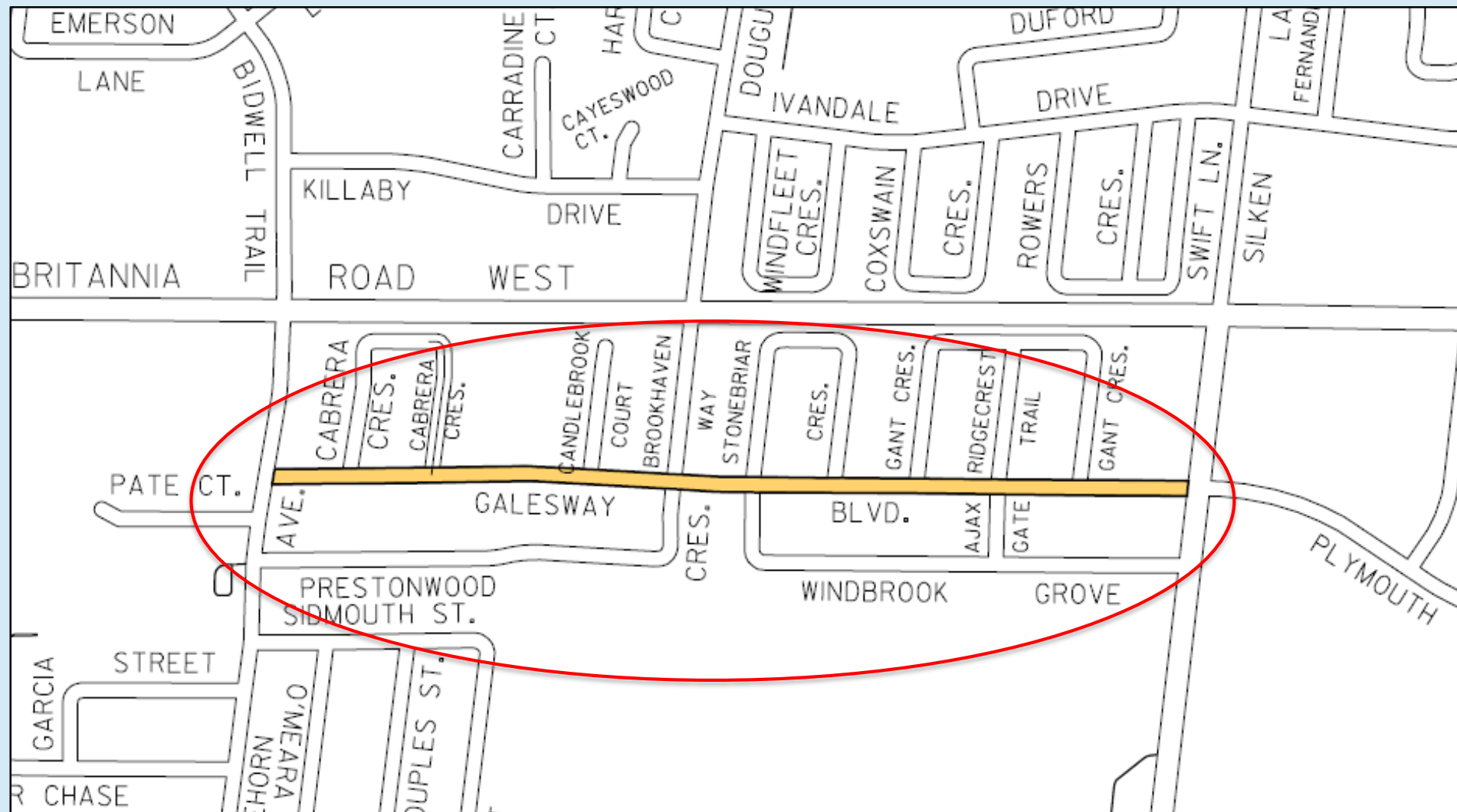


# SPEED CUSHION DESIGN

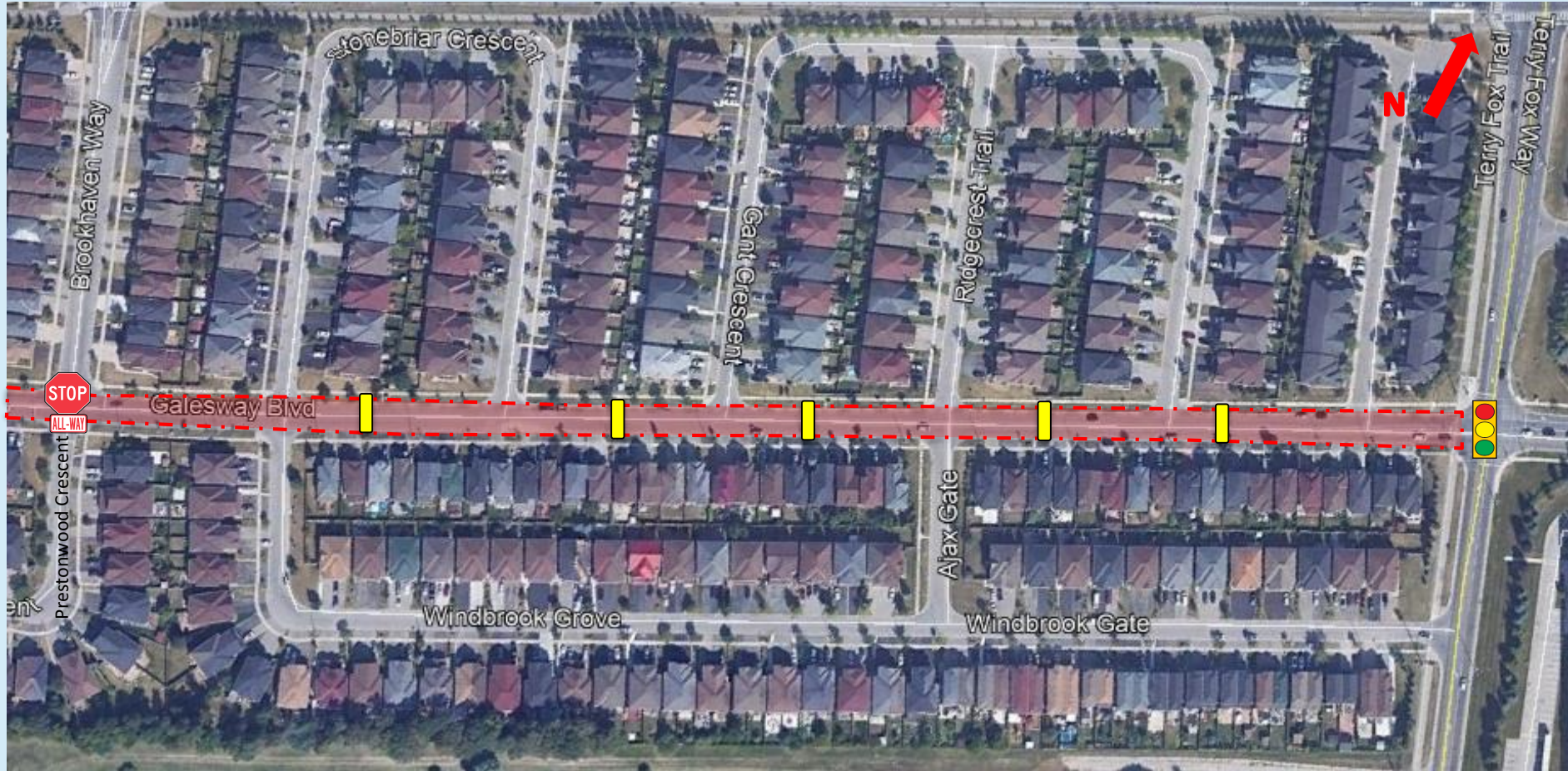


- Raised area on a roadway that does not cover the entire width of the road
- Designed to accommodate wide wheel base of emergency vehicles (easy passage)
- Designed to discourage drivers from travelling at excessive speeds
- A series of speed cushions is more effective than a single installation
- Use on neighborhood roads

# GALESWAY BOULEVARD



# GALESWAY BOULEVARD – TERRY FOX WAY AND BROOKHAVEN WAY



- All-Way Stop Location



- Proposed Speed Cushion




- Proposed Centre Line (Pavement Marking)




- Traffic Signal

# GALESWAY BOULEVARD – BROOKHAVEN WAY AND WHITEHORN AVENUE



 - All-Way Stop Location

 - Proposed Speed Cushion

 - Proposed Centre Line (Pavement Marking)