

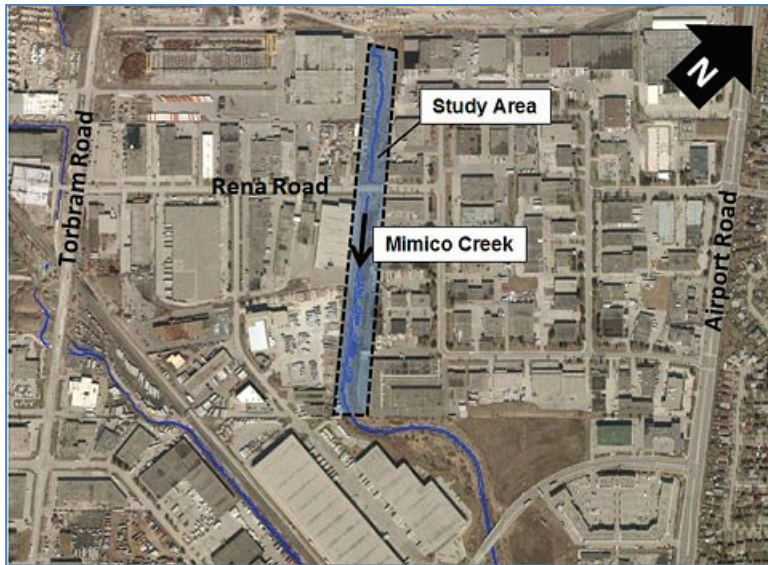
CITY OF MISSISSAUGA - NOTICE OF ONLINE PUBLIC ENGAGEMENT

Municipal Class Environmental Assessment Study:

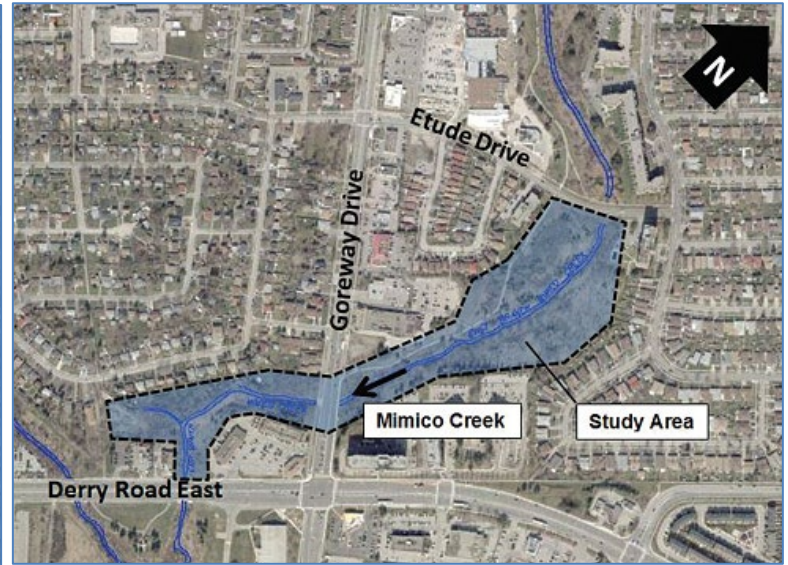
Mimico Creek Erosion Control Project - at Rena Rd. & Etude Dr. to Derry Rd. E.

WHAT?

- The City of Mississauga is undertaking a Schedule 'B' Class Environmental Assessment (Class EA) Study for erosion control and restoration at two locations on Mimico Creek:



Mimico Creek West Branch Study Area



Mimico Creek East Branch Study Area

WHY?

- Through its ongoing erosion monitoring program, the City of Mississauga recognizes that these sections of Mimico Creek are in need of rehabilitation to address existing erosion issues.

HOW?

- The study examined the creek and associated natural resources to identify existing erosion problems, potential future risks, and opportunities for restoration and environmental enhancement.
- Through the Class EA process, multiple alternative solutions are being developed and evaluated by the Study Team. These alternatives, including a preliminary preferred solution to address the erosion issues, will be refined through public and agency consultation (see below). Following this consultation, the Study Team will finalize the preferred solution and proceed with design of the recommended works.
- At the end of the study, a Project File Report, documenting the study process will be available for public review.

GET INVOLVED!

- Consultation is an essential part of the Class EA process. We want to ensure that anyone with an interest in this study has the opportunity to provide input. The Study Team has developed an information package to allow local residents and interested members of the public an opportunity to review and comment on the alternative solutions, the evaluation process, the preliminary preferred solution and the next steps in the study. The information package will be made available to the public on the City's website beginning June 3 to July 8, 2021 by visiting: <https://www.mississauga.ca/projects-and-strategies/environmental-assessments/mimico-creek-erosion-control-project-rena-road-and-etude-drive-to-derry-road-east/>
- Comments can be provided using the online comment form available on the project webpage, or via email to the following:

Greg Frew, P.Eng.

Project Manager, City of Mississauga

905-615-3200 (Ext. 3362) | Greg.Frew@mississauga.ca

Brian Bishop, M. Eng., P. Eng.

Senior Associate, Wood Environment and Infrastructure Solutions

905-730-3101 | brian.bishop@woodplc.com

COVID-19 Community Engagement Update: While we continue to respond to this pandemic, we are working hard to deliver essential services and projects to keep our City moving and safe. While we can't connect in-person at this time, we still want to connect! Opportunities to connect with the Project Team and share your input are noted above.

Personal information is collected under the authority of the Environmental Assessment Act and will be used in the assessment process. With exception of personal information, all comments shall become part of the public records. Questions about this collection should be directed to the Project Manager listed above.

This notice was first issued on May 27, 2021.