

CITY OF MISSISSAUGA

NOTICE OF ONLINE PUBLIC ENGAGEMENT

Municipal Class Environmental Assessment Study: Loyalist Creek Erosion Control Project behind Thorn Lodge Drive

WHAT?

- The City of Mississauga is undertaking a Schedule B Class Environmental Assessment (Class EA) Study for erosion control and restoration of Loyalist Creek behind Thorn Lodge Drive.

WHY?

- Through its ongoing erosion monitoring program, the City of Mississauga recognizes that this section of Loyalist Creek has been impacted by recent large storm events and is in need of rehabilitation to address existing erosion and safety issues.

HOW?

- The study examined the creek and associated natural resources to identify existing erosion problems, potential future risks, and opportunities for restoration and environmental enhancement.
- Through the Class EA process, multiple alternative solutions are being developed and evaluated by the Study Team and will be refined through public and agency consultation (see below). The Study Team will then select a Preferred Alternative and proceed with design of the recommended works.
- At the end of the study, a Project File report, documenting the study process will be available for public review.

GET INVOLVED!

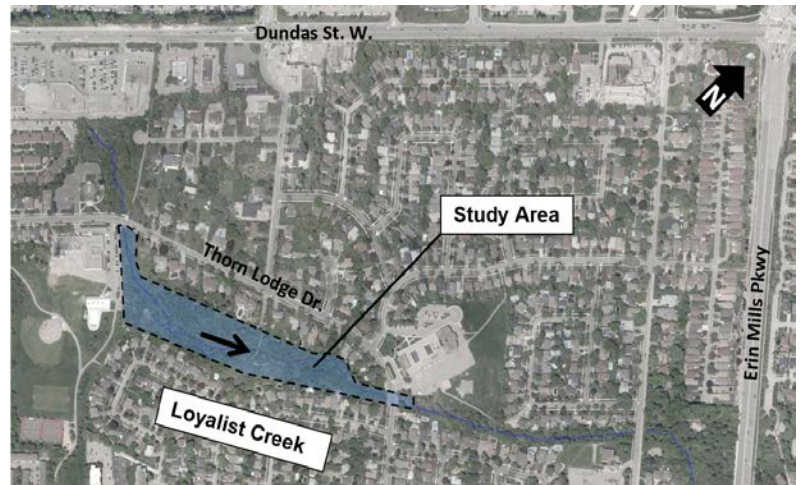
- Consultation is an essential part of the EA process. We want to ensure that anyone with an interest in the study has the opportunity to provide input.
- As part of the project, online public engagement has been arranged to allow local residents and interested members of the public an opportunity to review and comment on the project findings to date, the alternative solutions being considered and the evaluation process. Input gathered through the online public engagement will be used to support the EA study. Project information will be made available to the public on the City's project website below beginning June 18th 2021 and will be open for comments until July 19th 2021:

<https://mississauga.ca/projects-and-strategies/environmental-assessments/loyalist-creek-erosion-control-project-behind-thorn-lodge-drive/>

- If you have any questions or comments regarding the study, or would like to be included in the project mailing list, please contact:

Greg Frew, P.Eng.
Project Manager
City of Mississauga
201 City Centre Dr, Suite 800
Mississauga, ON L5B 2T4
(905) 615-3200, ext. 3362
Greg.Frew@mississauga.ca

Robert Amos, P.Eng.
Consultant Project Manager
Aquafor Beech Ltd.
2600 Skymark Avenue, Unit 6-201
Mississauga, ON L4W 5B2
(905) 629-0099, ext. 294
Amos.R@aquaforbееch.com



COVID-19 Community Engagement Update: While we continue to respond to this pandemic, we are working hard to deliver essential services and projects to keep our City moving and safe. While we can't connect in-person at this time, we still want to connect! Opportunities to connect with the Project Team and share your input are noted above.

Personal information is collected under the authority of the Environmental Assessment Act and will be used in the assessment process. With exception of personal information, all comments shall become part of the public records. Questions about this collection should be directed to the Project Manager listed above.

This notice was first issued June 2021.