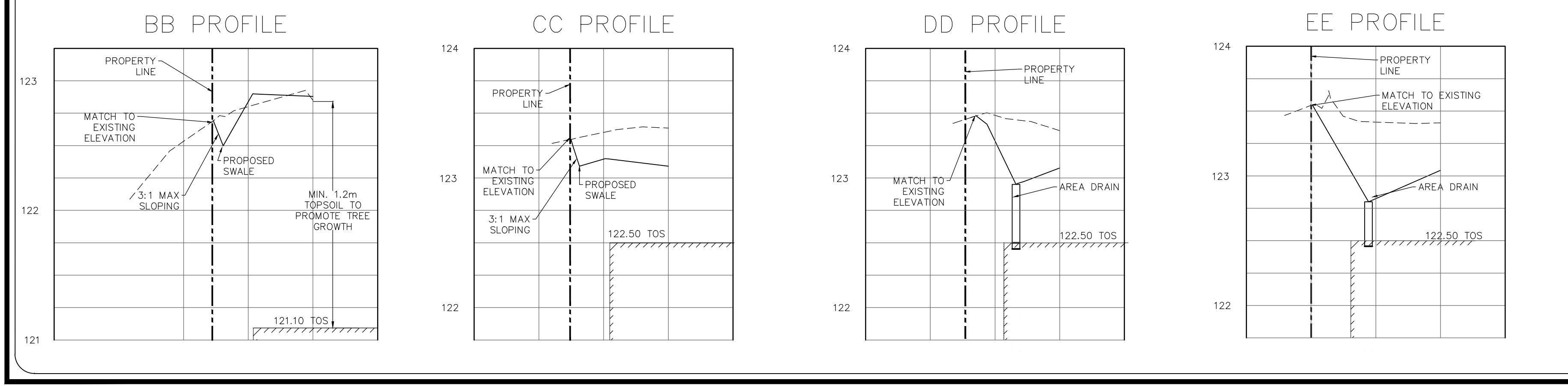
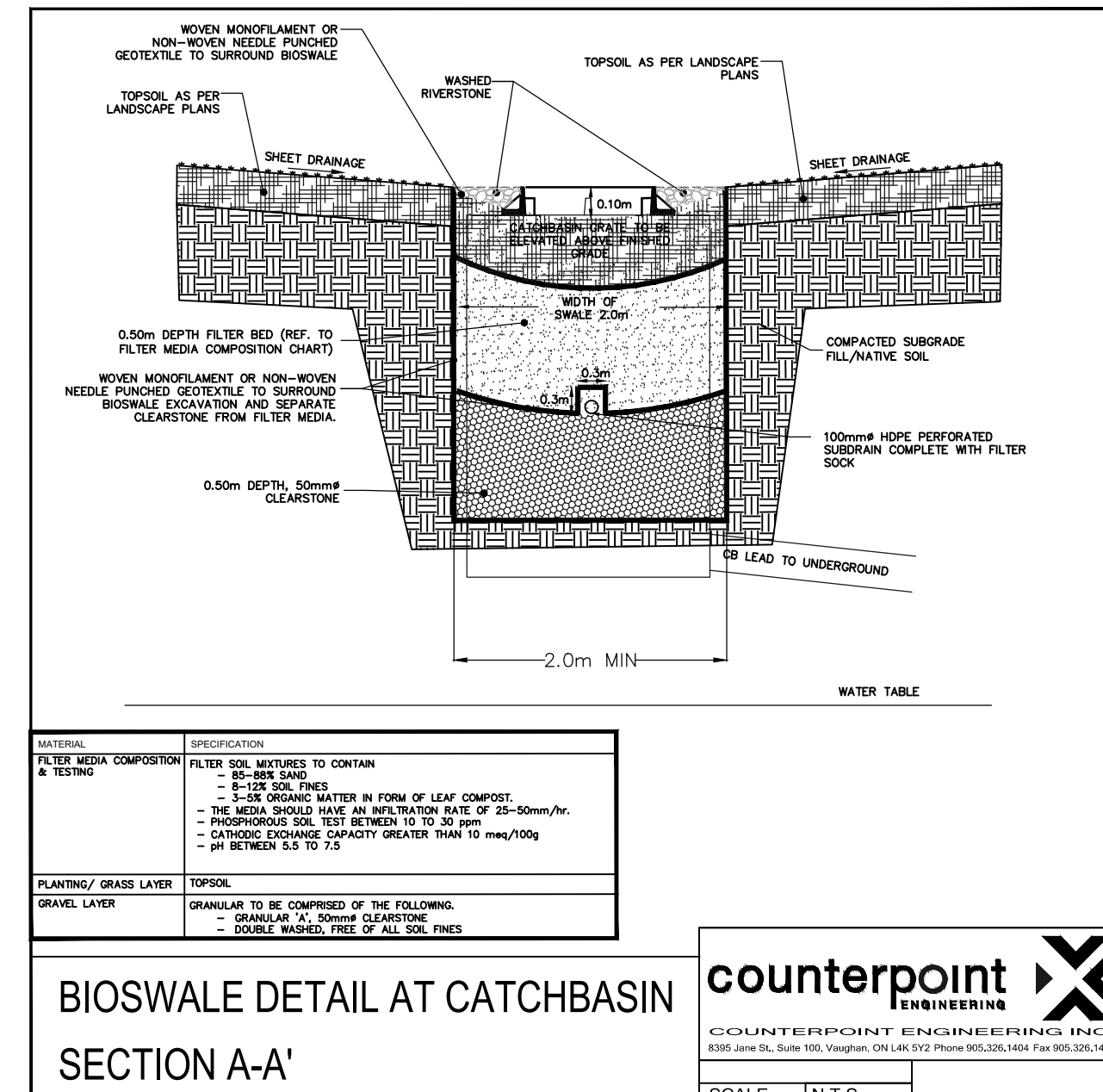


KEY PLAN

LEGEND

- x121.65EX EXISTING ELEVATION
- 123.00- EXISTING CONTOUR
- x123.00 PROPOSED ELEVATION
- x123.25 TC TOP OF CURB ELEVATION
- x123.55 TW TOP OF WALL ELEVATION
- x122.75 BW BOTTOM OF WALL ELEVATION
- ↔ EMERGENCY OVERLAND FLOW
- ⊕ EXISTING FIRE HYDRANT
- EXISTING STORM MANHOLE
- EXISTING SANITARY MANHOLE
- H&V ⊕ EXISTING FIRE HYDRANT AND VALVE
- V&B ⊕ PROPOSED VALVE AND BOX
- PROPOSED STORM MANHOLE
- PROPOSED CATCHBASIN
- PROPOSED SANITARY MANHOLE
- PROPERTY LINE
- SWALE
- x122.75 SW BOTTOM OF SWALE ELEVATION
- 2.0% PROPOSED SLOPE
- - - - - LIMIT OF GRADING
- EMERGENCY SPILL ELEVATION



LEGAL & TOPOGRAPHY

PROVIDED BY: SPEIGHT, VAN NOSTRAND & GIBSON
750 OAKDALE ROAD, UNITS 65 & 66
TORONTO, ON M3J 2Z4
PHONE: 416749-7864

ELEVATION NOTE
ELEVATIONS ARE GEODETIC AND ARE DERIVED FROM THE CITY OF MISSISSAUGA BENCHMARK No. 94

LOCATION: ON THE EAST FACE OF THE EAST PARAPET WALL OF THE EAST STEPS OF THE ST. JOHN THE BAPTIST, ANGLICAN CHURCH ON THE NORTH SIDE OF DUNDAS ST. EAST (HIGHWAY NO.5), 200' EAST OF CAWTHRA ROAD.

ELEVATION:
PUBLISHED ELEVATION = 126.861

No.	REVISIONS/ISSUED	DATE	BY	CITY
3.	ISSUED FOR REZONING/1st SPA SUBMISSION	2021/05/26	PT	
2.	ISSUED FOR RE-ZONING APPROVAL-2nd SUBMISSION	2020/08/14	PT	
1.	ISSUED FOR RE-ZONING APPROVAL	2019/07/19	PT	

counterpoint ENGINEERING

COUNTERPOINT ENGINEERING INC.
8395 Jane St., Suite 100, Vaughan, ON L4K 5Y2 Phone 905.326.1404 Fax 905.326.1405

ENGINEER'S STAMP

APPLICANT:
HANSEATIC HOLDINGS LIMITED
16 ESNA PARK DRIVE SUITE 200
MARKHAM, ONTARIO
PHONE: (905) 940-0310

SITE LOCATION:
600-620 LOLITA GARDENS
MISSISSAUGA, ONTARIO

CONCEPTUAL SITE GRADING PLAN

DESIGNED BY: ES	CHECKED BY: PT	DATE: JULY 2019
DRAWING BY: ES	CHECKED BY: PT	PROJECT NO. 18080
SCALE: 1:500m	CHECKED BY: PT	DRAWING NO. C1