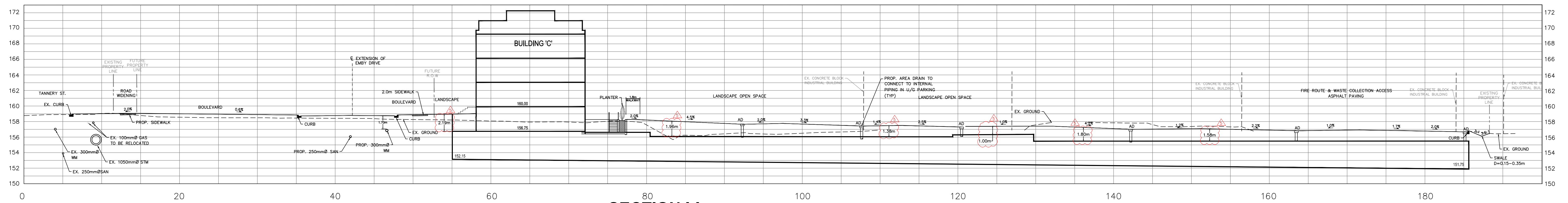
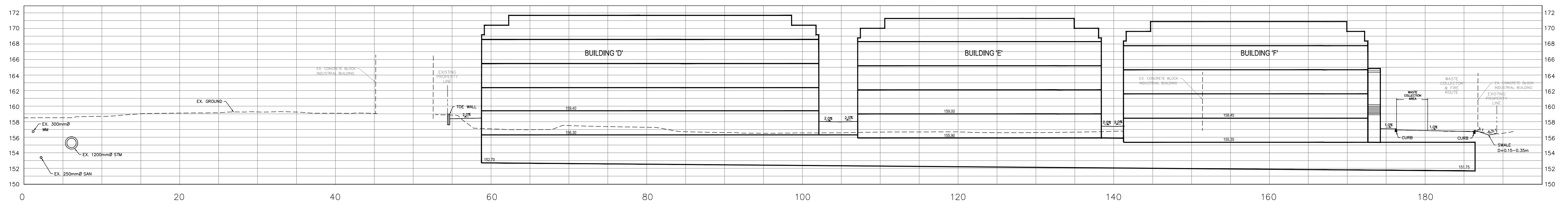


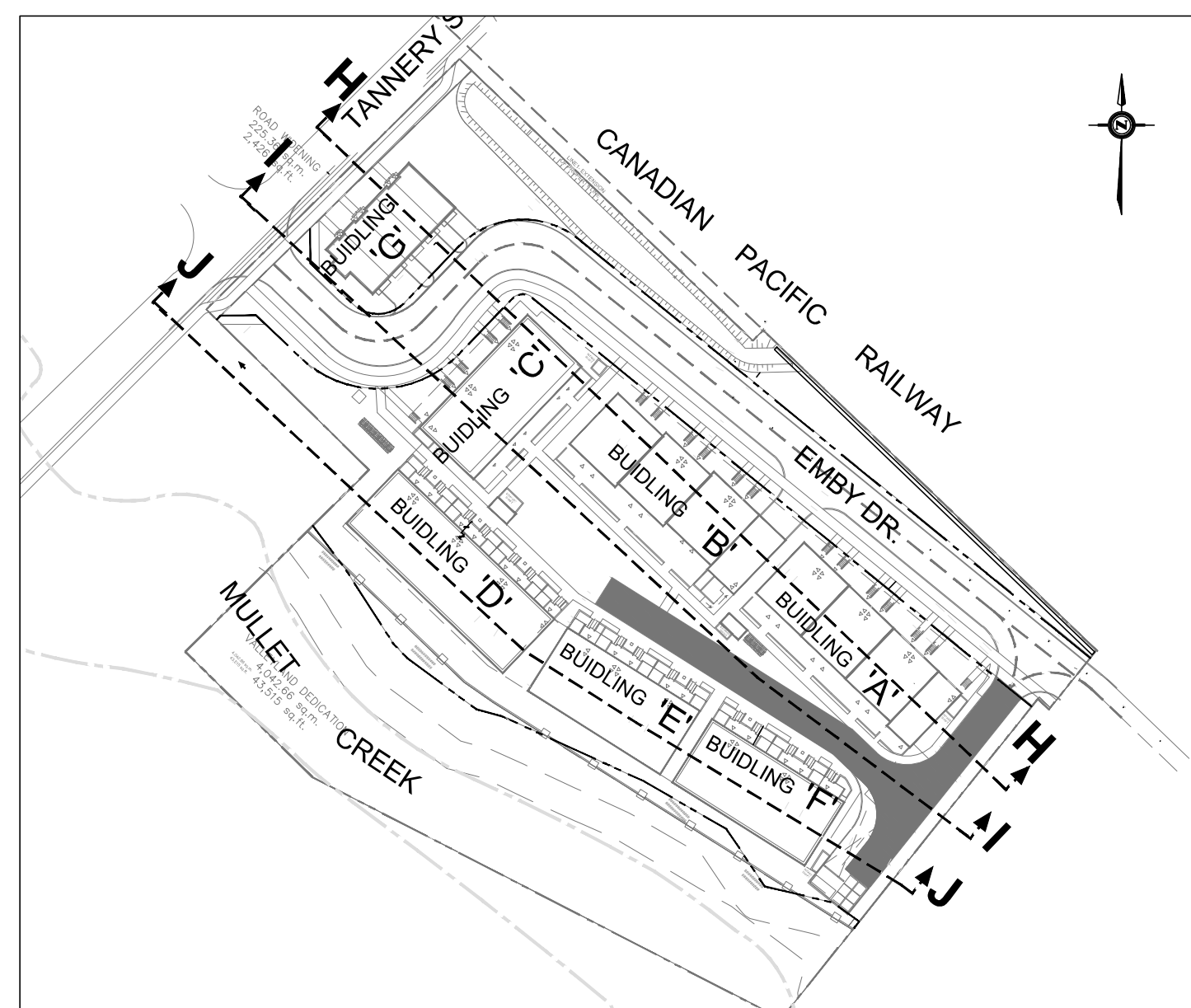
SECTION H-H
SC 1:250



SECTION I-I
SC 1:250




SECTION J-J
SC 1:250



GENERAL NOTES:

1. REFER TO DWG. C-100 FOR PROPOSED GRADING PLAN.
2. REFER TO DWG. C-101 FOR PROPOSED SEWERS AND WATERMAIN.
2. REFER TO DWG. C-106 FOR DETAILS OF STREETSCAPE.




CITY OF MISSISSAUGA
REGIONAL MUNICIPALITY OF PEEL

No.	DATE	DESCRIPTION
1	2019/08/27	ISSUED FOR ZBA RESUBMISSION
2	2020/08/07	ISSUED FOR ZBA RESUBMISSION
3	2021/03/10	ISSUED FOR ZBA RESUBMISSION
4	2021/05/17	ISSUED FOR RESUBMISSION
5	2021/05/19	ISSUED PER CITY'S COMMENTS

425 Cochrane Drive, Suite 800
Markham, Ontario
L3R 9R9, Canada
Tel: (905) 470-0015 Fax: (905) 470-0050

LEA Consulting Ltd.
Consulting Engineers
and Planners
www.LEA.ca



LEA

51-57 TANNERY STREET DEVELOPMENT
NORTH - SOUTH CROSS SECTIONS

DESIGN	F.M.	DRAWN	M.N.	CHECKED	R.B.	CONTRACT No.	18038	
SCALE:	1:250 (FULL SIZE)						DRAWING NUMBER	C-104
DATE:	JULY, 2019							

DRAWING NAME: F:\18038-02-51-57-Tannery\Drawing\Connect_Drawings\C-104_Cross Sections.dwg May 19, 2021 10:42am