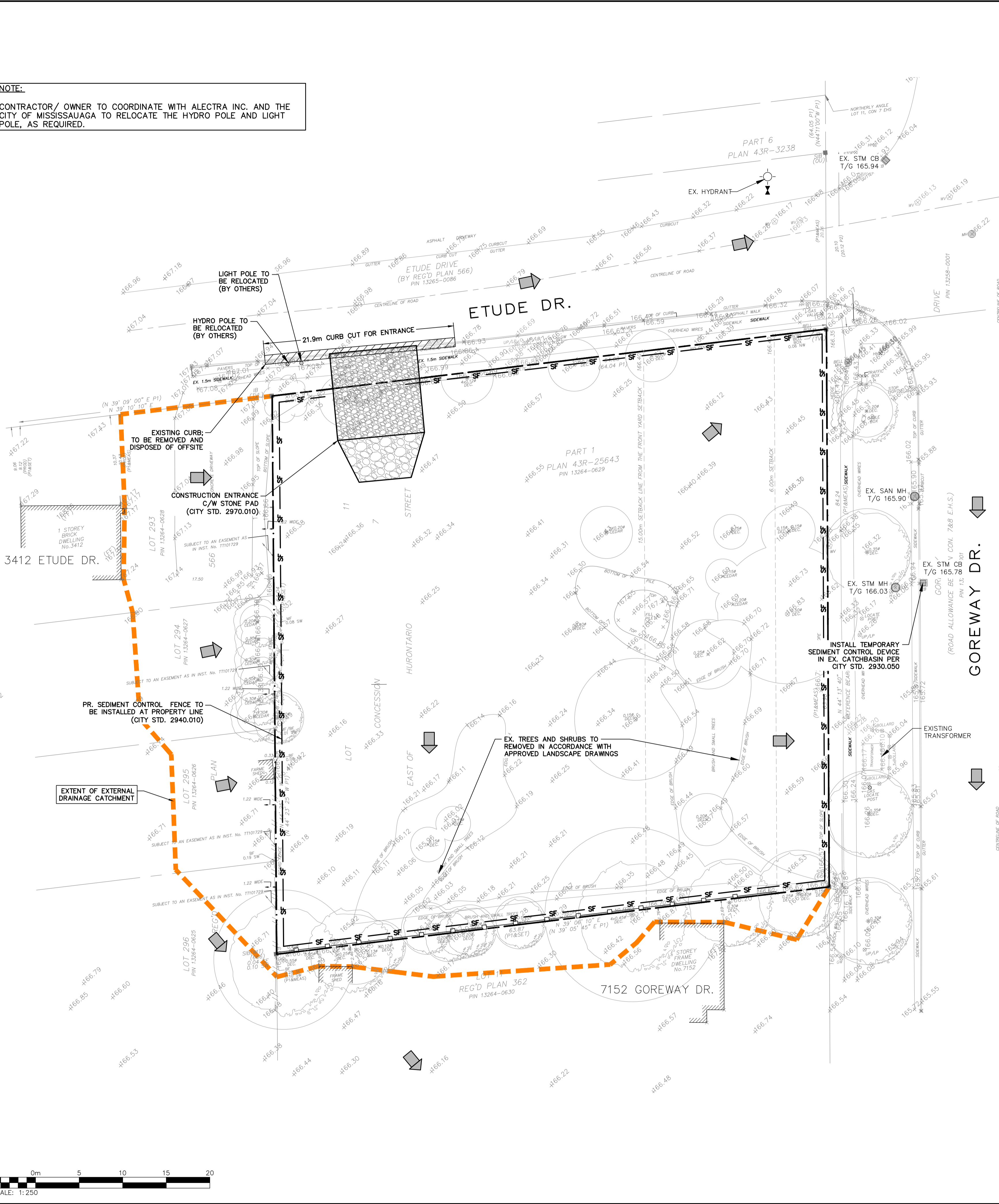
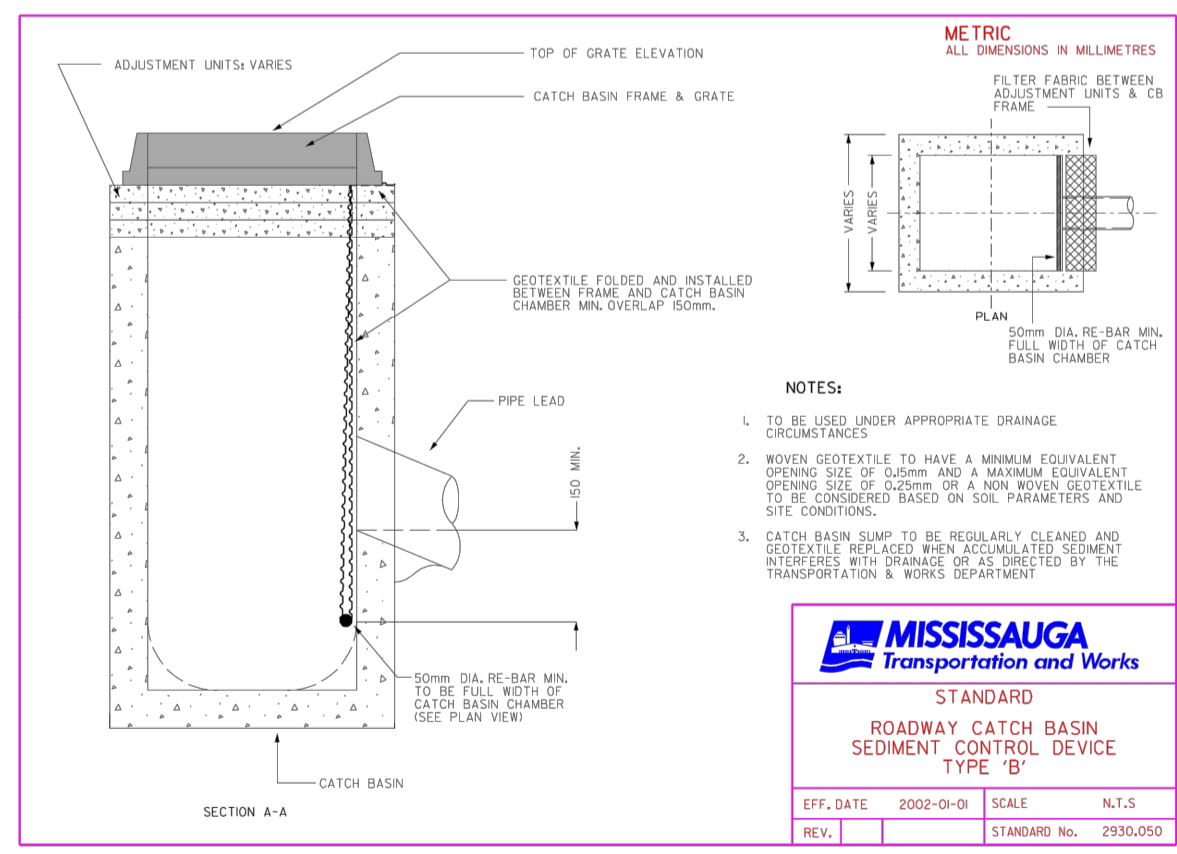
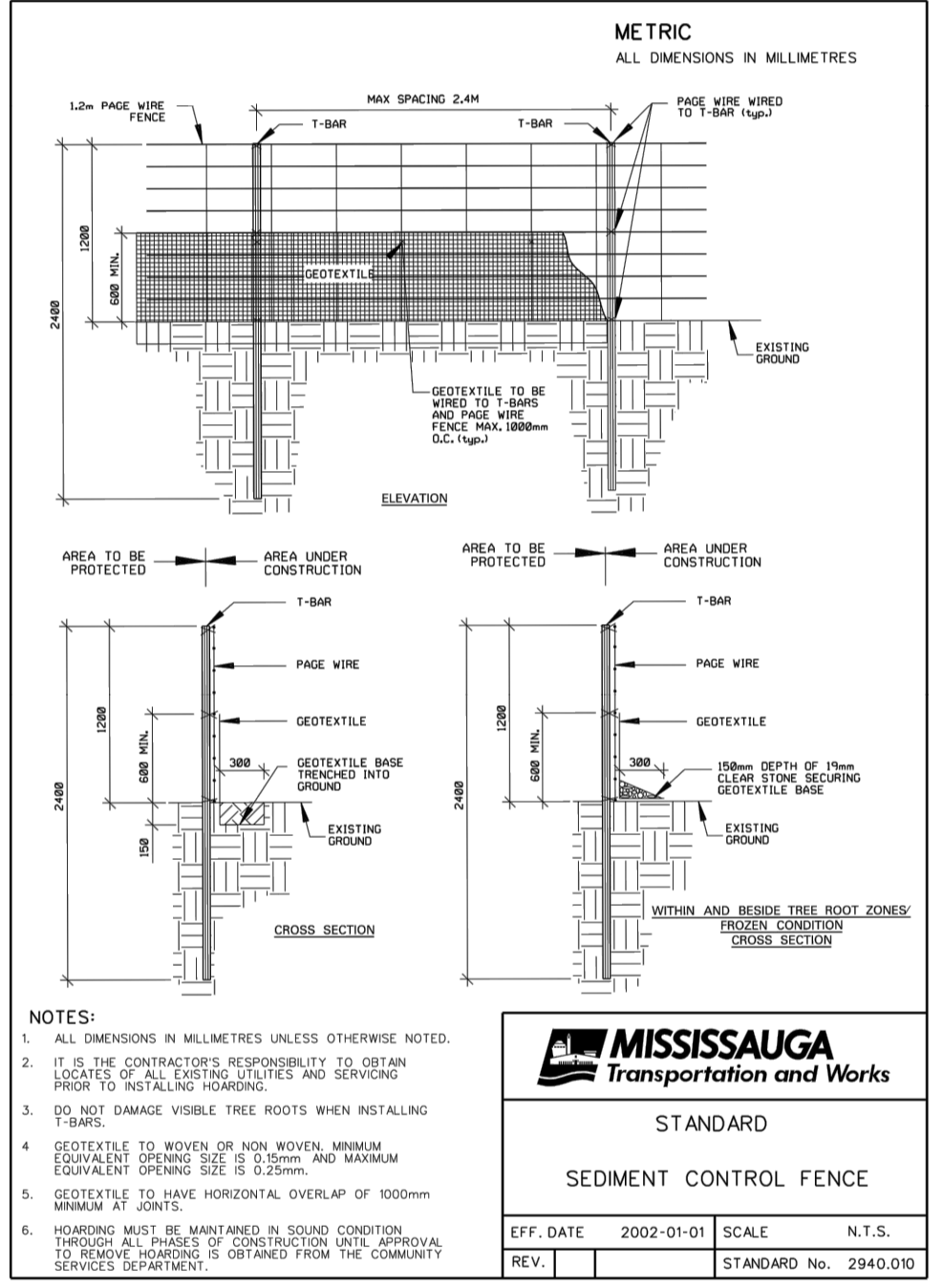
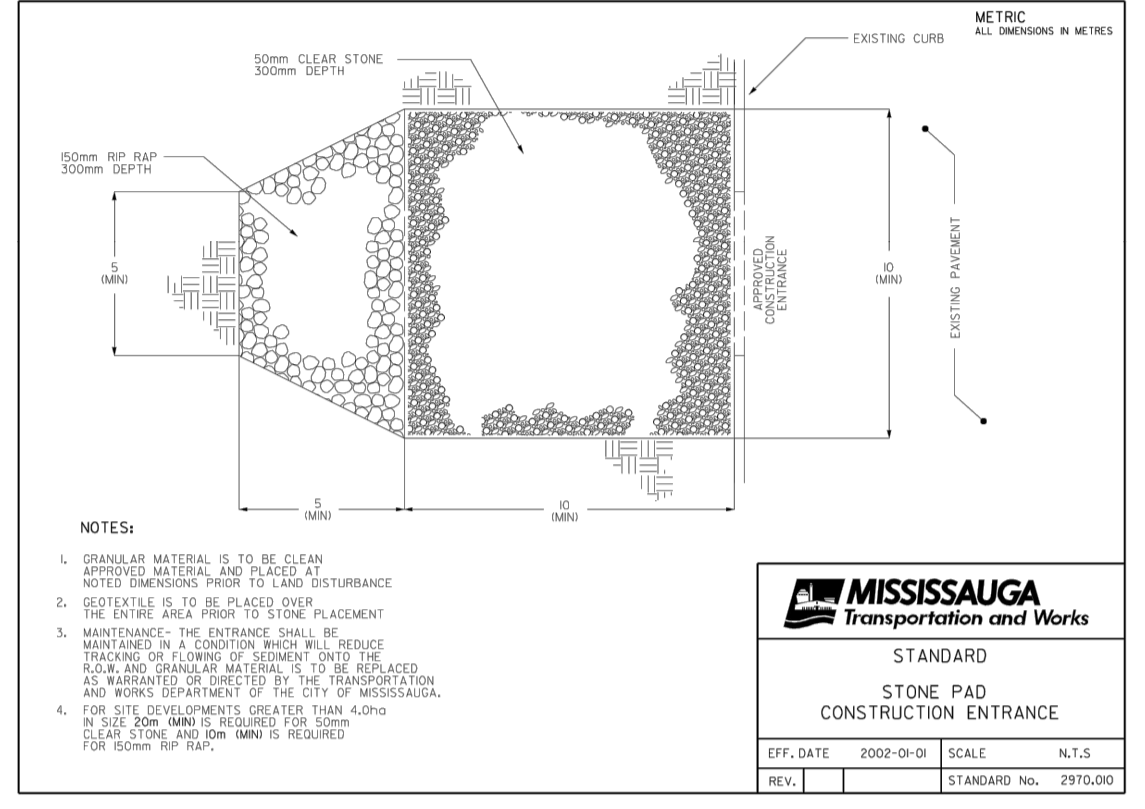
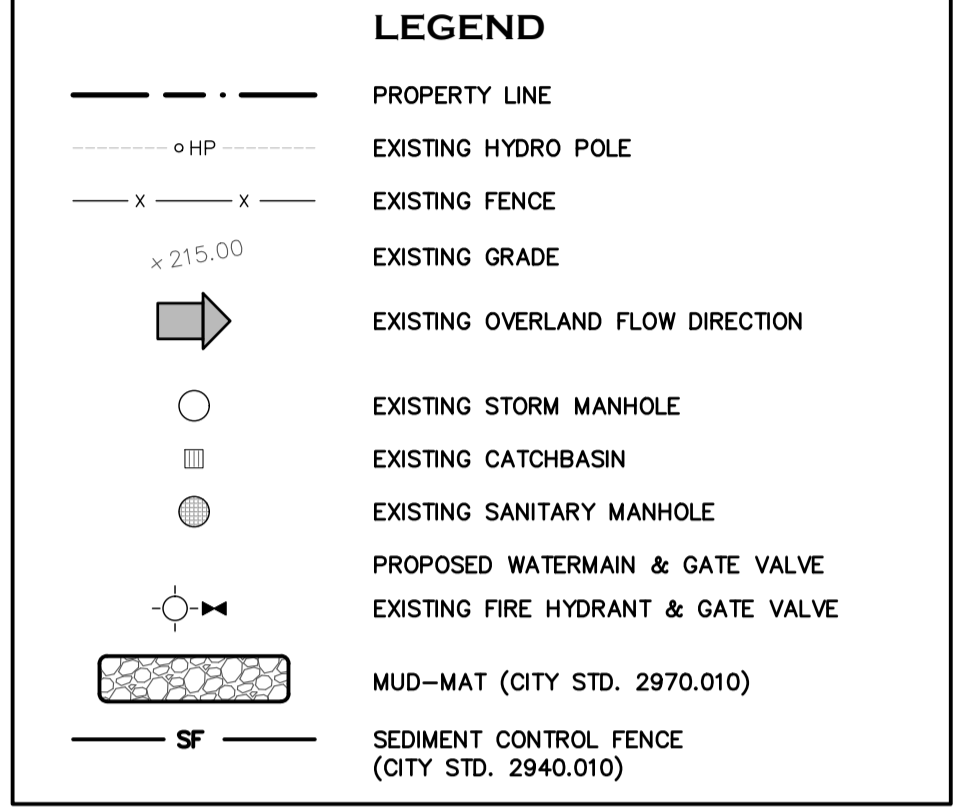
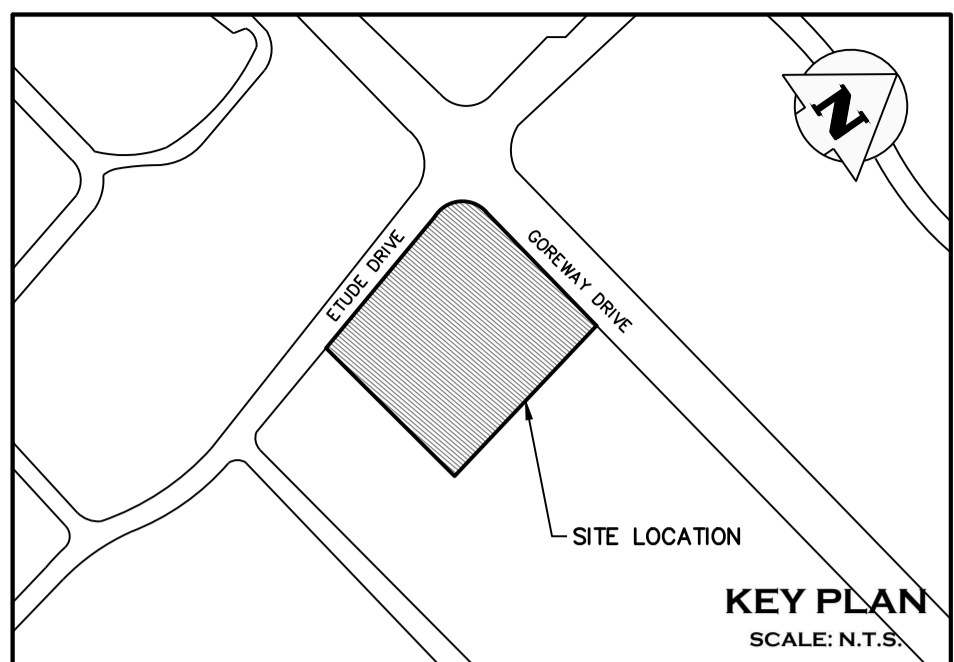
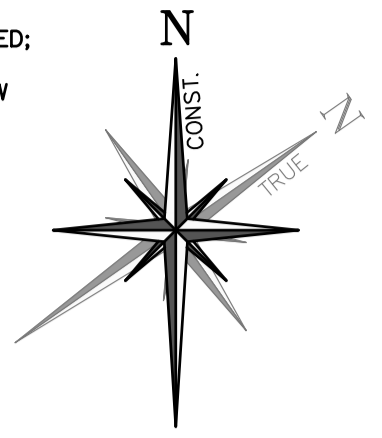


NOTE:
CONTRACTOR/ OWNER TO COORDINATE WITH ALECTRA INC. AND THE CITY OF MISSISSAUGA TO RELOCATE THE HYDRO POLE AND LIGHT POLE, AS REQUIRED.

- NOTES:**
- EROSION AND SEDIMENT CONTROL METHODS ARE TO BE CONTINUOUSLY EVALUATED; AND UPGRADES ARE TO BE IMPLEMENTED, WHEN NECESSARY
 - ADDITIONAL EROSION AND SEDIMENT CONTROL MATERIALS (IE. SILT FENCE, STRAW BALES, CLEAR STONES, ETC) ARE TO BE KEPT ON SITE FOR EMERGENCIES AND REPAIRS
 - THE CONTRACTOR IS ULTIMATELY RESPONSIBLE FOR CONTROLLING SEDIMENT & EROSION WITHIN THE CONSTRUCTION SITE FOR THE TOTAL PERIOD OF THE CONSTRUCTION. THE SEDIMENT LADEN WATER WILL NOT BE ALLOWED TO DISCHARGE TO THE CREEK
 - AN AFTER HOURS CONTACT NUMBER IS TO BE VISIBLY POSTED ON-SITE FOR EMERGENCIES.
 - ANY SEDIMENT SPILL FROM THE SITE MUST BE REPORTED TO THE MINISTRY OF ENVIRONMENT, CONSERVATION AND PARKS (CALL SPILL ACTION CENTER AT 1-800-268-0060).
 - CONTRACTOR TO REMOVE ALL INSTALLED EROSION CONTROL MEASURES AFTER CONSTRUCTION COMPLETION AND THE SITE IS FULLY STABILIZED.



0	ISSUED FOR 1st SUBMISSION SPA	2021/JUN/24
No.	ISSUE / REVISION	YYYY/MM/DD

ELEVATION NOTE:
ELEVATIONS SHOWN HEREON ARE DERIVED FROM THE CANADIAN GEODETIC DATUM BENCHMARK No. 448
ELEVATION = 162.55m

SURVEY NOTES:
SURVEY COMPLETED J.M. GELBLOOM SURVEYING LIMITED. (2017/MAY/08)
PROJECT No.: 17-089

BEARINGS ARE UTM GRID, DERIVED FROM RTN OBSERVATIONS
UTM ZONE 17, NAD83 (GRS) (2010.0)
DISTANCES ARE GROUND AND CAN BE CONVERTED TO GRID BY MULTIPLYING BY THE COMBINED SCALE FACTOR OF 0.9996781

SITE PLAN NOTES:
DESIGN ELEMENTS ARE BASED ON SITE PLAN BY JARDIN DESIGN GROUP INC.
DRAWING No.: A-01a, REV.7 (2021/MAY/26)
PROJECT No.: 17-18

DRAWING NOTES:
THIS DRAWING IS THE EXCLUSIVE PROPERTY OF C.F. CROZIER & ASSOCIATES INC. AND THE REPRODUCTION OF ANY PART OF IT WITHOUT PRIOR WRITTEN CONSENT OF THIS OFFICE IS STRICTLY PROHIBITED.
THE CONTRACTOR SHALL VERIFY ALL DIMENSIONS, LEVELS, AND DATUMS ON SITE AND REPORT ANY DISCREPANCIES OR OMISSIONS TO THIS OFFICE PRIOR TO CONSTRUCTION. THIS DRAWING IS TO BE READ AND UNDERSTOOD IN CONJUNCTION WITH ALL OTHER PLANS AND DOCUMENTS APPLICABLE TO THIS PROJECT. DO NOT SCALE THIS DRAWING.
ALL EXISTING UNDERGROUND UTILITIES TO BE VERIFIED IN THE FIELD BY THE CONTRACTOR PRIOR TO CONSTRUCTION.
EXISTING INVERTS FROM AS-BUILT DRAWINGS 20065-D, 40529-D

Region of Peel
Working for you

MISSISSAUGA

Project
7170 GOREWAY DRIVE
CITY OF MISSISSAUGA

**EROSION & SEDIMENT CONTROL PLAN
REMOVALS PLAN**

NOT FOR CONSTRUCTION

Stamp

MISSISSAUGA Transportation and Works
STANDARD
ROADWAY CATCH BASIN
SEDIMENT CONTROL DEVICE
TYPE 'B'
EFF. DATE: 2002-01-01 SCALE: N.T.S.
REV. 1 STANDARD NO.: 2950.050

Stamp

CROZIER CONSULTING ENGINEERS
2800 HIGH POINT DRIVE
SUITE 100
MILTON, ON L9T 6P4
905-875-0026 T
905-875-4915 F
WWW.CFCROZIER.CA

Drawn: D.D. Design: H.L. / N.R.S. Project No.: 1346-4573
Check: N.R.S. Check: N.C. Scale: 1:250 Dwg: C 101

