

Tree Protection Notes

All existing trees which are to remain shall be fully protected with hoarding erected beyond the drip line of the tree canopy to the satisfaction of the Planning and Building Department prior to the issuance of the building permit. Groups of trees and other existing vegetation are to be protected with hoarding around the entire area. Areas within the protective fencing shall remain undisturbed and shall not be used for the storage of building materials and equipment.

The Planning and Building Department will be responsible for inspection of trees on private property, while the Community Services Department is responsible for the inspection of hoarding for public trees.

Hoarding must remain in place until an inspection by the Landscape Architectural Technologist, Development and Design Division, and appropriate removal time has been agreed upon. Hoarding must remain in place until an inspection by Landscape Architectural Technologist, Development and Design Division, and an appropriate removal time has been agreed upon. No rigging cables shall be wrapped around or installed in the trees and surplus soil, equipment, debris or materials shall not be placed over the root systems of the trees within the protective fencing. No contaminants will be dumped or flushed where feeder roots of trees exist.

The developer or agents shall take every precaution necessary to prevent damage to the vegetation to be retained.

Where limbs or portions of trees are removed to accommodate construction, they will be removed in accordance with accepted arboriculture practice.

Where root systems of protected trees adjacent to construction are exposed or damaged they shall be neatly trimmed and the area backfilled with appropriate material to prevent desiccation.

No open trenching shall occur through tree preservation zones (TPZ). Only directional boring can be used for service installation in these areas.

Where necessary, vegetation will be given an overall pruning to restore the balance between roots and top growth, or to restore its appearance.

Trees that have died or have been damaged beyond repair shall be removed and replaced at the owners expense with trees of a size and species approved by the Planning and Building Department.

If grades around trees to be protected are to change, the owner shall be required to take precautions such as dry welling, retaining walls, and root feeding to the satisfaction of the Planning and Building Department.

Existing Tree Schedule

No.	Tree Species	DBH (cm)	Location	CR (%)	TC	Comments
#1	Norway maple	34	NE roadside	60	Road Allowance	To Be Preserved
#2	Norway maple	37	N roadside	50	Road Allowance	To Be Preserved - Risk of Injury
#3	Norway maple	37	N roadside	55	Road Allowance	To Be Preserved - Risk of Injury
#4	Norway maple	19	NW roadside	50	Road Allowance	To Be Preserved - Risk of Injury
#5	Scots Pine	29	NW roadside	60	Road Allowance	To Be Removed
#6	Scots Pine	18-20	NW roadside	55	Road Allowance	To Be Removed
#7	Hawthorn	5-8	W roadside	70	Private	To Be Removed
#8	Hawthorn	10-14	W roadside	65	Private	To Be Removed
#9	Hawthorn	1-3	W roadside	70	Private	To Be Removed
#10	Green Ash	5-7	W roadside	70	Private	To Be Removed
#11	Buckthorn	8-15	SW roadside	65	Private	To Be Removed
#12	Buckthorn	8-16	SW roadside	65	Private	To Be Removed
#13	Buckthorn	3-5	SW roadside	70	Private	To Be Removed
#14	Buckthorn	5-10	SW roadside	65	Private	To Be Removed
#15	stump	NA	SW roadside	0	Road Allowance	To Remain
#16	Norway maple	16	NE side	70	Private	To Be Removed
#17	Norway maple	10	NE exempt	70	Private	To Be Removed
#18	Norway maple	16	NE side	70	Private	To Be Removed
#19	Norway maple tag #601599	47	E side	60	Private	To Be Removed
#20	Norway Maple	27	NE side	65	Private	To Be Removed
#21	Norway maple tag #601594	53	NE side	65	Private	To Be Removed
#22	Norway Maple	14	NW side	70	Private	To Be Removed
#23	Red Oak	12-15	N side	65	Private	To Be Removed
#24	Juniper	14	N exempt	55	Private	To Be Removed
#25	Silver Maple tag #601585	20-38	Centre	60	Private	To Be Removed
#26	Manitoba Maple	8-24	W side	65	Private	To Be Removed
#27	Juniper	14-16	W side	70	Private	To Be Removed
#28	Silver Maple	10-13	SE exempt	70	Private	To Be Removed
#29	Green Ash	10-15	SE side	65	Private	To Be Removed
#30-36	Green Ash	5-8	SE exempt	65-70	Private	To Be Removed
#37	Buckthorn	5-8	NW exempt	70	Private	To Be Removed
#38	Norway Maple	18	W side	70	Private	To Be Removed
#39	Norway Maple	20	W side	70	Private	To Be Removed
#40	Norway Maple	22	W side	70	Private	To Be Removed
#41-65	White Cedars	5-10	N exempt	60-70	Private	To Be Removed
#66-80	Green Ash	8-12	E except	55-65	Private	To Be Removed
#81	Red Elm	18-24	S side	55	Private	To Be Removed
#82-83	Buckthorns	5-9	SE exempt	60-65	Private	To Be Removed
#84	Siberian Elm	42	NE offsite	55	Neighbour	To Be Removed (With Neighbour's Consent)
#85	Manitoba Maple	34	NE offsite	60	Neighbour	To Be Preserved - Risk of Injury (With Neighbour's Consent)
#86	Manitoba Maple	58-84	E offsite	65	Neighbour	To Be Removed (With Neighbour's Consent)
#87	Buckthorn	5-8	SE offsite	65	Neighbour	To Be Preserved - Risk of Injury (With Neighbour's Consent)
#88	Buckthorn	5-10	SE offsite	65	Neighbour	To Be Preserved - Risk of Injury (With Neighbour's Consent)
#89	Manitoba Maple	28-38	SE offsite	60	Neighbour	To Be Preserved - Risk of Injury (With Neighbour's Consent)
#90-94	Manitoba Maples	20-22	SE offsite	65-70	Neighbour	To Be Preserved - Risk of Injury (With Neighbour's Consent)
#95	Red Oak	8-12	SE border	70	Neighbour	To Be Preserved - Risk of Injury (With Neighbour's Consent)
#96+	Honeysuckles	1-3	S border	70-75	Neighbour	To Be Preserved
#97-99	Junipers	15-18	S offsite	55-65	Neighbour	To Be Preserved
#100	Manitoba Maple	10-16	S offsite	65-70	Neighbour	To Be Preserved
#101	Silver Maple	14-16	S offsite	70	Neighbour	To Be Preserved



MARTON SMITH LANDSCAPE ARCHITECTS

170 The Donway W Suite 206,
Toronto, Ontario, Canada, M3C 2G3
tel. 416.492.9966 | email. info@msla.ca

Municipality:



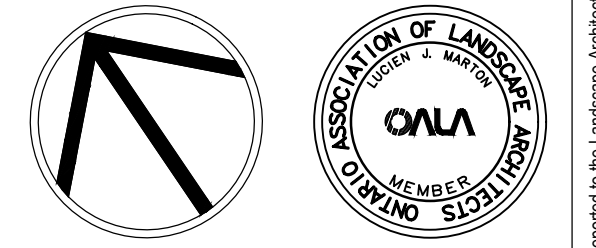
Notes:

- Existing Deciduous Tree Canopy
- Existing Tree to be Removed
- Tree Protection Zone
- Tree Protection Fence
- Existing Tree Reference Key
- Detail Reference Key

08	Issued for Submission	07/07/21
07	Issued for Submission	05/18/21
04	Revised per Grading	10/31/19
03	Issued for Review	10/22/19
02	Issued for Review	11/24/19
01	Issued for Review	09/14/17

No. Revision Date

North: Stamp:



Project:
Proposed Residential Development
7170 Goreway Drive,
Mississauga, Ontario

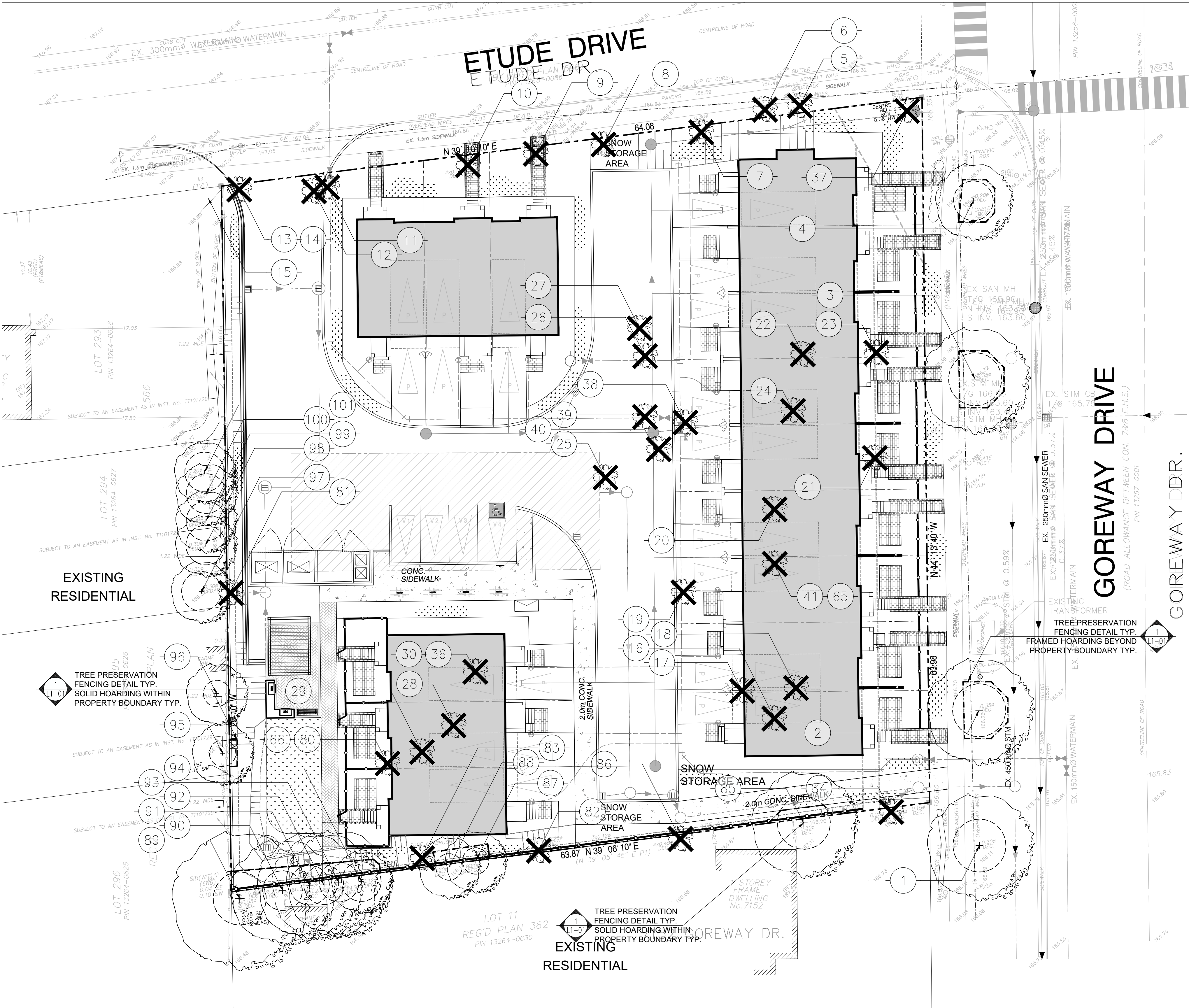
Scale: 1:200 Date: Oct 2019

Drawn By: S.P. Checked By: L.M.

Drawing Title:

Tree Preservation Plan

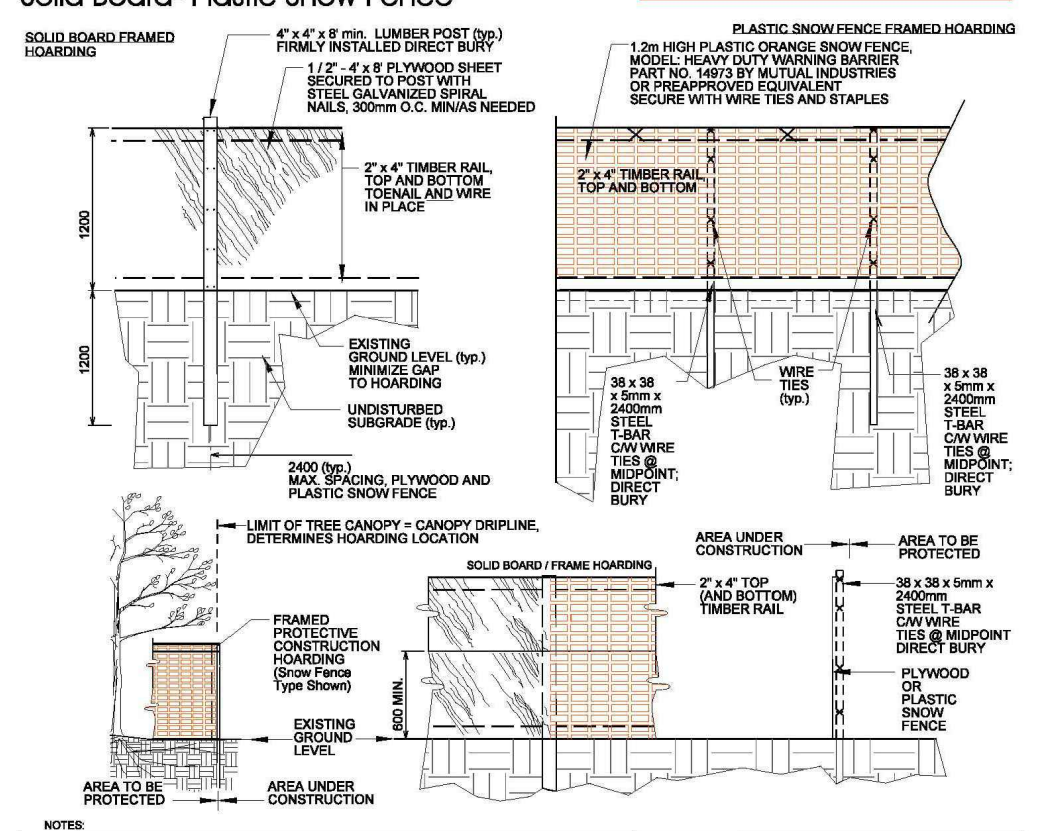
Project No. 17139 Sheet No. L1-01



REFER TO PLAN FOR LOCATION

02830-6

Hoarding
Framed Protective Construction Hoarding
Solid Board- Plastic Snow Fence



NOTES:
1. HOARDING LOCATION AS PER DRAWINGS. HOARDING INSTALLATIONS ARE TO INCLUDE WHEN DETECTABLE FABRIC FOR ELEMENT CONTROL.
2. NO MOBILIZATION OR CONSTRUCTION WORK TO OCCUR UNTIL HOARDING HAS BEEN INSPECTED AND APPROVED BY COMMUNITY SERVICES.
3. HOARDING TO BE SUPPLIED, INSTALLED AND MAINTAINED BY THE CONTRACTOR THROUGHOUT ALL PHASES OF WORK ON SITE.
4. THE CONTRACTOR IS TO REMOVE AND REPAIR THE HOARDING OFF SITE WHEN DIRECTED BY THE CPM.
5. ALL WOOD PRODUCTS TO BE NEW AND LAMBER ALA DRIED.
6. ALL INTERFERENCE TO NEW GALVANIZED STEEL AND GALVANIZED STEEL SHALL BE REMOVED.
7. TO ALLOW WATER TO COLLECT AND/OR POOL ON EITHER SIDE OF THE HOARDING.
8. WHEN INSTALLING DIRECT DRAIN TUBES POSTS AND TUBES, TAKE CARE TO AVOID VISIBLE AND ASCERTAINABLE TREE ROOTS.
9. PLACE HOARDING AT LEAST 10' FROM TREE TRUNKS AND 10' FROM ANY OTHER OBSTACLES.
10. HOARDING OFF AREA TO REMAIN UNDISTURBED. NO STOCKPILING, STANDING OR MOVEMENT OF VEHICLES OR OTHER EQUIPMENT WITHIN PROTECTED AREA.
11. FOR PROTECTION OF TREES AND ROOT SYSTEMS, CONTRACTOR MAY BE REQUIRED TO PROVIDE WATERING, MULCHING, FERTILIZING, PRUNING OR OTHER ACTIVITIES TO ENSURE THE HEALTH OF THE TREES.
12. ALL MEASUREMENTS IN MILLIMETRES UNLESS NOTED OTHERWISE (E.G. DIMENSIONS LAMBER).
13. CONTRACTOR RESPONSIBLE FOR LOCATES.

Detail: 02830-6 ORIGINAL DATE: Mar 08/18 REVISION DATE: Mar 08/18

TREE PROTECTION BARRIERS DETAIL TYP.

SCALE: N.T.S.

1
L1-01