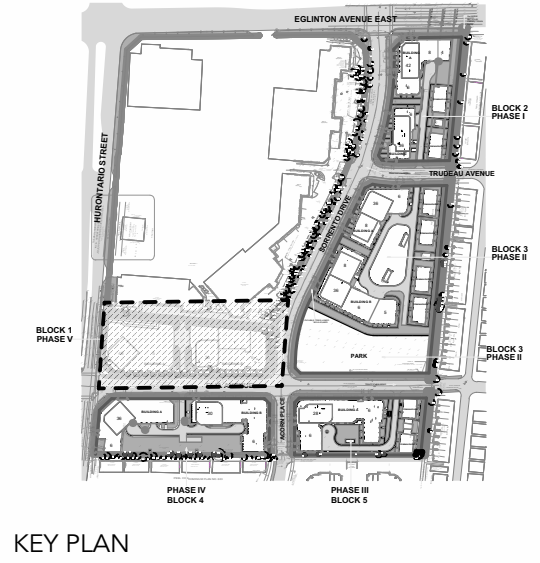


ROOT SENSITIVE EXCAVATION  
REQUIRED UNDER ARBORIST  
SUPERVISION FOR ALTERATION OF  
MUNICIPAL SIDEWALKS INSIDE THE  
TPZ OF TREE(S).



KEY PLAN

GENERAL NOTES:

1. This plan must be read in conjunction with the arborist report prepared by Cohen & Master Tree and Shrub Services Ltd.
2. Cohen & Master added the tree icons for trees 6, 8, 17, 18, 21, 22, 24, 27, 30, 32, 40, 43, 44, 47, 49, 56, 57, 62, 64, 67, 94, 99, 102, 108, 109, 110, 151, 167, 168, 179, 180, 189, 191 (locations approximate). All other information provided on a site plan prepared by Quadangle Architects Ltd. provided Jan. 26 2021 and based on a topographic survey prepared by J.H. Gelbloom Surveying Ltd. dated 2019.

3	May 17 2021 - Iss. Rezoning
2	Dec. 17 2020
1	Dec. 2 2020
No.	DATE

**COHEN & MASTER**  
TREE AND SHRUB SERVICES  
42 Guardsman Road, Thornhill, ON L3T 6L4  
416-932-0622 info@cmtrees.com  
CMTREES.COM BE GOOD TO YOUR TREES.

TITLE  
**TREE PRESERVATION  
PLAN**

SITE  
**ELIA LAND  
BLOCK 1 -  
25, 35, 55 ELIA AVENUE**

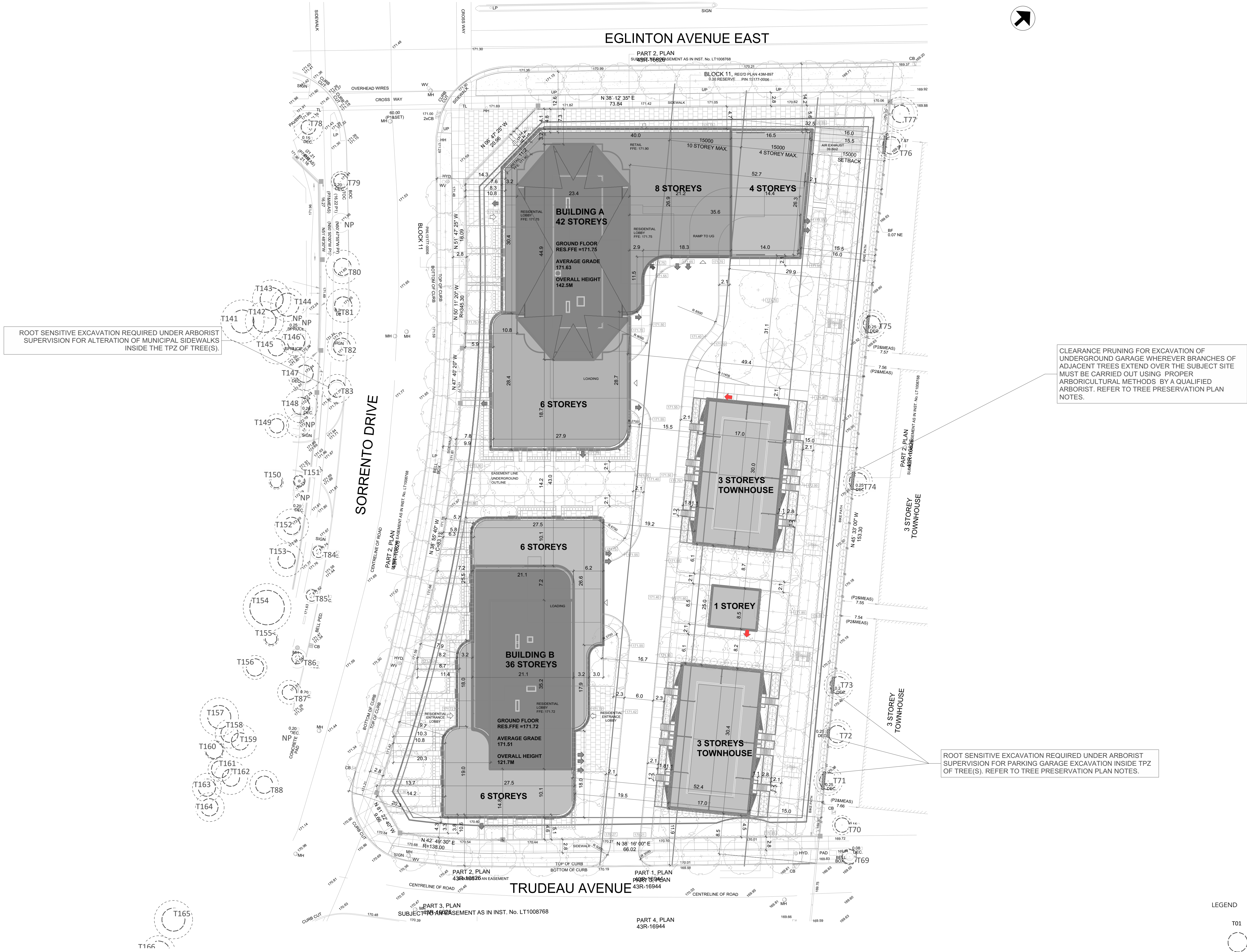
FILE 11193-5513 SCALE 1:400

SHEET

**TPP-1**

- LEGEND
- T01 INVENTORIED TREE
  - MINIMUM TREE PROTECTION ZONE AS PER CITY OF MISSISSAUGA
  - DRIP LINE
  - TREE PROTECTION BARRIER
  - TREE REMOVAL
  - ROOT SENSITIVE EXCAVATION
  - NP SURVEYED TREE NO LONGER PRESENT





KEY PLAN

GENERAL NOTES:

1. This plan must be read in conjunction with the arborist report prepared by Cohen & Master Tree and Shrub Services Ltd.
2. Cohen & Master added the tree icons for trees 6, 8, 17, 18, 21, 22, 24, 27, 30, 32, 40, 43, 44, 47, 49, 56, 57, 62, 64, 67, 94, 99, 102, 108, 109, 110, 151, 167, 168, 179, 180, 189, 191 (locations approximate). All other information provided on a site plan prepared by Quadrangle Architects Ltd. provided Jan. 26 2021 and based on a topographic survey prepared by J.H. Gelbloom Surveying Ltd. dated 2019.

3	May 17 2021 - Iss. Rezoning
2	Dec. 17 2020
1	Dec. 2 2020
No.	DATE

**COHEN & MASTER**  
TREE AND SHRUB SERVICES  
42 Guardsman Road, Thornhill, ON L3T 6L4  
416-932-0622 info@cmtrees.com  
CMTRES.COM BE GOOD TO YOUR TREES.

TITLE  
**TREE PRESERVATION PLAN**

SITE  
**ELIA LAND  
BLOCK 2 -  
136 EGLINTON EAST**

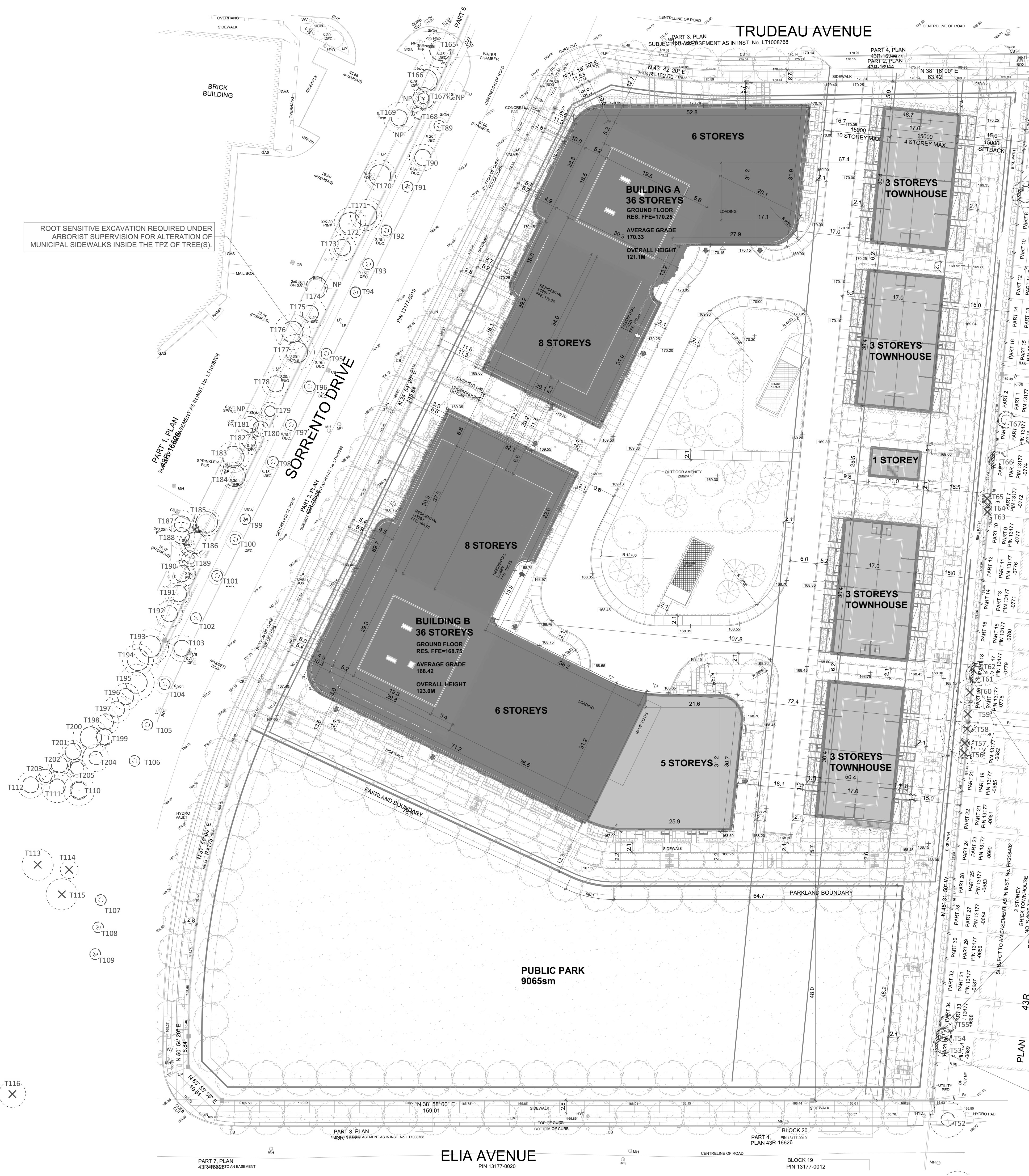
FILE 11193-5513 SCALE 1:400

SHEET

TPP-2

- LEGEND
- T01 INVENTORIED TREE
  - MINIMUM TREE PROTECTION ZONE AS PER CITY OF MISSISSAUGA
  - DRIP LINE
  - TREE PROTECTION BARRIER
  - TREE REMOVAL
  - ROOT SENSITIVE EXCAVATION
  - NP SURVEYED TREE NO LONGER PRESENT





ROOT SENSITIVE EXCAVATION REQUIRED UNDER ARBORIST SUPERVISION FOR ALTERATION OF MUNICIPAL SIDEWALKS INSIDE THE TPZ OF TREE(S).

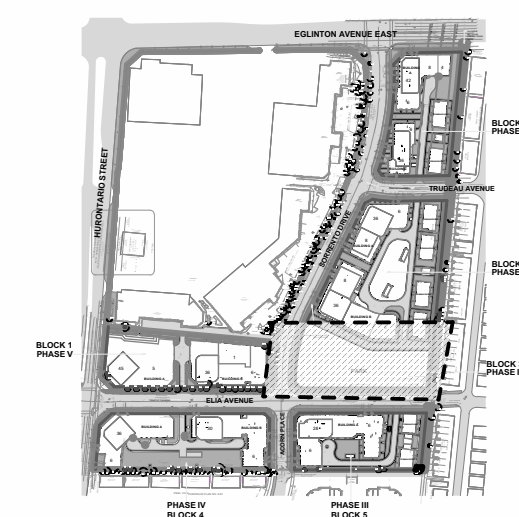
CLEARANCE PRUNING FOR EXCAVATION OF UNDERGROUND GARAGE WHEREVER BRANCHES OF ADJACENT TREES EXTEND OVER THE SUBJECT SITE MUST BE CARRIED OUT USING PROPER ARBORICULTURAL METHODS BY A QUALIFIED ARBORIST. REFER TO TREE PRESERVATION PLAN NOTES.

ROOT SENSITIVE EXCAVATION REQUIRED UNDER ARBORIST SUPERVISION FOR PARKING GARAGE EXCAVATION INSIDE TPZ OF TREE(S). REFER TO TREE PRESERVATION PLAN NOTES.

ROOT SENSITIVE EXCAVATION REQUIRED UNDER ARBORIST SUPERVISION FOR PARKING GARAGE EXCAVATION INSIDE TPZ OF TREE(S). REFER TO TREE PRESERVATION PLAN NOTES.

CLEARANCE PRUNING FOR EXCAVATION OF UNDERGROUND GARAGE WHEREVER BRANCHES OF ADJACENT TREES EXTEND OVER THE SUBJECT SITE MUST BE CARRIED OUT USING PROPER ARBORICULTURAL METHODS BY A QUALIFIED ARBORIST. REFER TO TREE PRESERVATION PLAN NOTES.

- LEGEND
- T01 INVENTORIED TREE
  - MINIMUM TREE PROTECTION ZONE AS PER CITY OF MISSISSAUGA
  - DRIP LINE
  - TREE PROTECTION BARRIER
  - TREE REMOVAL
  - ROOT SENSITIVE EXCAVATION
  - NP SURVEYED TREE NO LONGER PRESENT



KEY PLAN

GENERAL NOTES:

1. This plan must be read in conjunction with the arborist report prepared by Cohen & Master Tree and Shrub Services Ltd.
2. Cohen & Master added the tree icons for trees 6, 8, 17, 18, 21, 22, 24, 27, 30, 32, 40, 43, 44, 47, 49, 56, 57, 62, 64, 67, 94, 99, 102, 108, 109, 110, 151, 167, 168, 179, 180, 189, 191 (locations approximate). All other information provided on a site plan prepared by Quadrangle Architects Ltd. provided Jan. 26 2021 and based on a topographic survey prepared by J.H. Gelbloom Surveying Ltd. dated 2019.

3	May 17 2021 - Iss. Rezoning
2	Dec. 17 2020
1	Dec. 2 2020
No.	DATE

**COHEN & MASTER**  
TREE AND SHRUB SERVICES  
42 Guardsman Road, Thornhill, ON L3T 6L4  
416-932-0622 info@cmtrees.com  
CMTREES.COM BE GOOD TO YOUR TREES.

TITLE  
**TREE PRESERVATION PLAN**

SITE  
**ELIA LAND  
BLOCK 3 -  
105 ELIA AVENUE**

FILE 11193-5513 SCALE 1:450

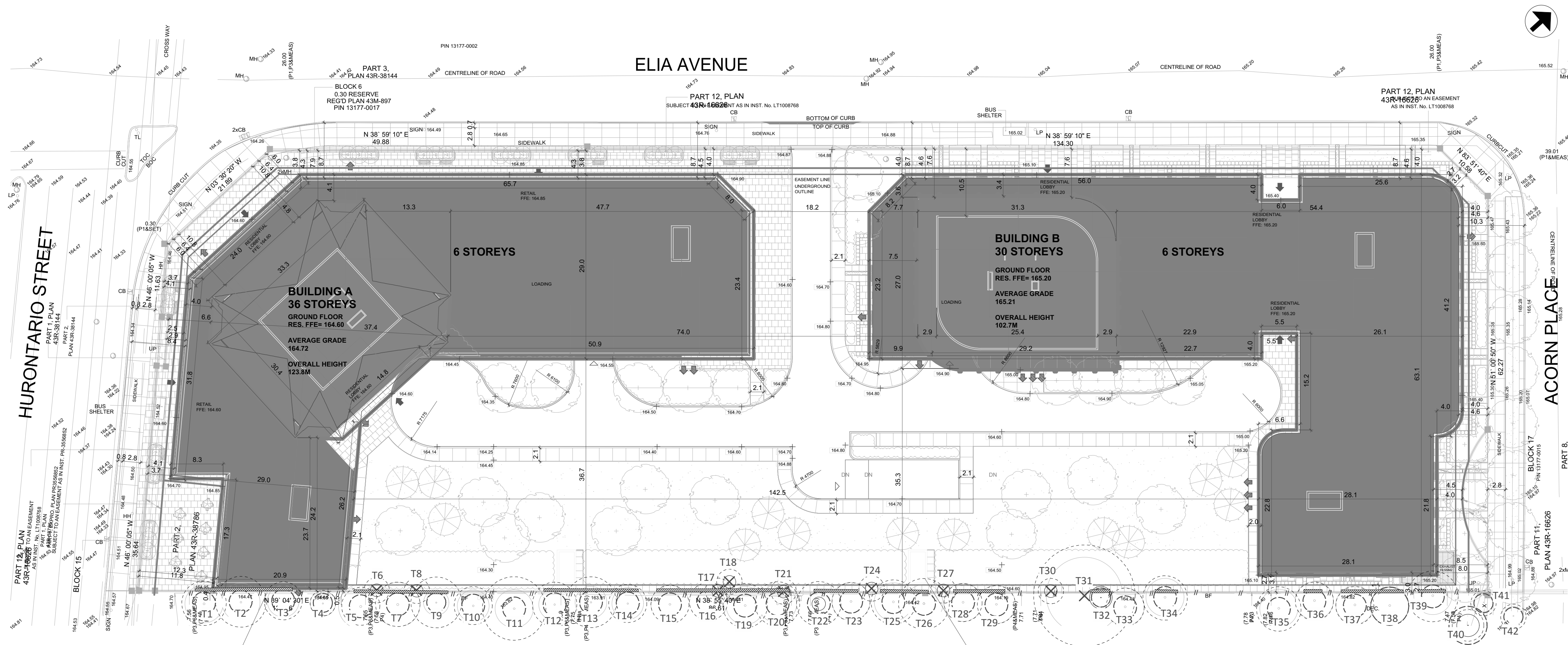
SHEET

TPP-3





KEY PLAN



ROOT SENSITIVE EXCAVATION REQUIRED UNDER ARBORIST SUPERVISION FOR PARKING GARAGE EXCAVATION INSIDE TPZ OF TREE(S). REFER TO TREE PRESERVATION PLAN NOTES.

CLEARANCE PRUNING FOR EXCAVATION OF UNDERGROUND GARAGE WHEREVER BRANCHES OF ADJACENT TREES EXTEND OVER THE SUBJECT SITE MUST BE CARRIED OUT USING PROPER ARBORICULTURAL METHODS BY A QUALIFIED ARBORIST. REFER TO TREE PRESERVATION PLAN NOTES.

- LEGEND
- T01 INVENTORIED TREE
  - MINIMUM TREE PROTECTION ZONE AS PER CITY OF MISSISSAUGA
  - DRIP LINE
  - TREE PROTECTION BARRIER
  - TREE REMOVAL
  - ROOT SENSITIVE EXCAVATION
  - NP SURVEYED TREE NO LONGER PRESENT

GENERAL NOTES:

1. This plan must be read in conjunction with the arborist report prepared by Cohen & Master Tree and Shrub Services Ltd.

2. Cohen & Master added the tree icons for trees 6, 8, 17, 18, 21, 22, 24, 27, 30, 32, 40, 43, 44, 47, 49, 56, 57, 62, 64, 67, 94, 99, 102, 108, 109, 110, 151, 167, 168, 179, 180, 189, 191 (locations approximate). All other information provided on a site plan prepared by Quadrangle Architects Ltd. provided Jan. 26 2021 and based on a topographic survey prepared by J.H. Gelbloom Surveying Ltd. dated 2019.

3	May 17 2021 - Iss. Rezoning
2	Dec. 17 2020
1	Dec. 2 2020
No.	DATE

**COHEN & MASTER**  
TREE AND SHRUB SERVICES  
42 Guardsman Road, Thornhill, ON L3T 6L4  
416-932-0622 info@cmtrees.com  
CMTREES.COM BE GOOD TO YOUR TREES.

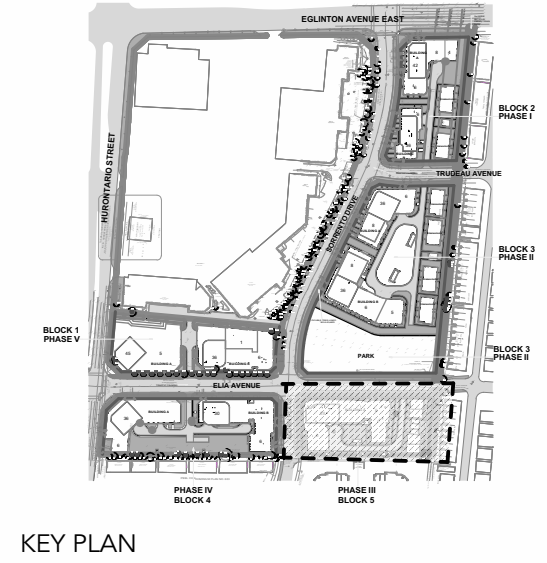
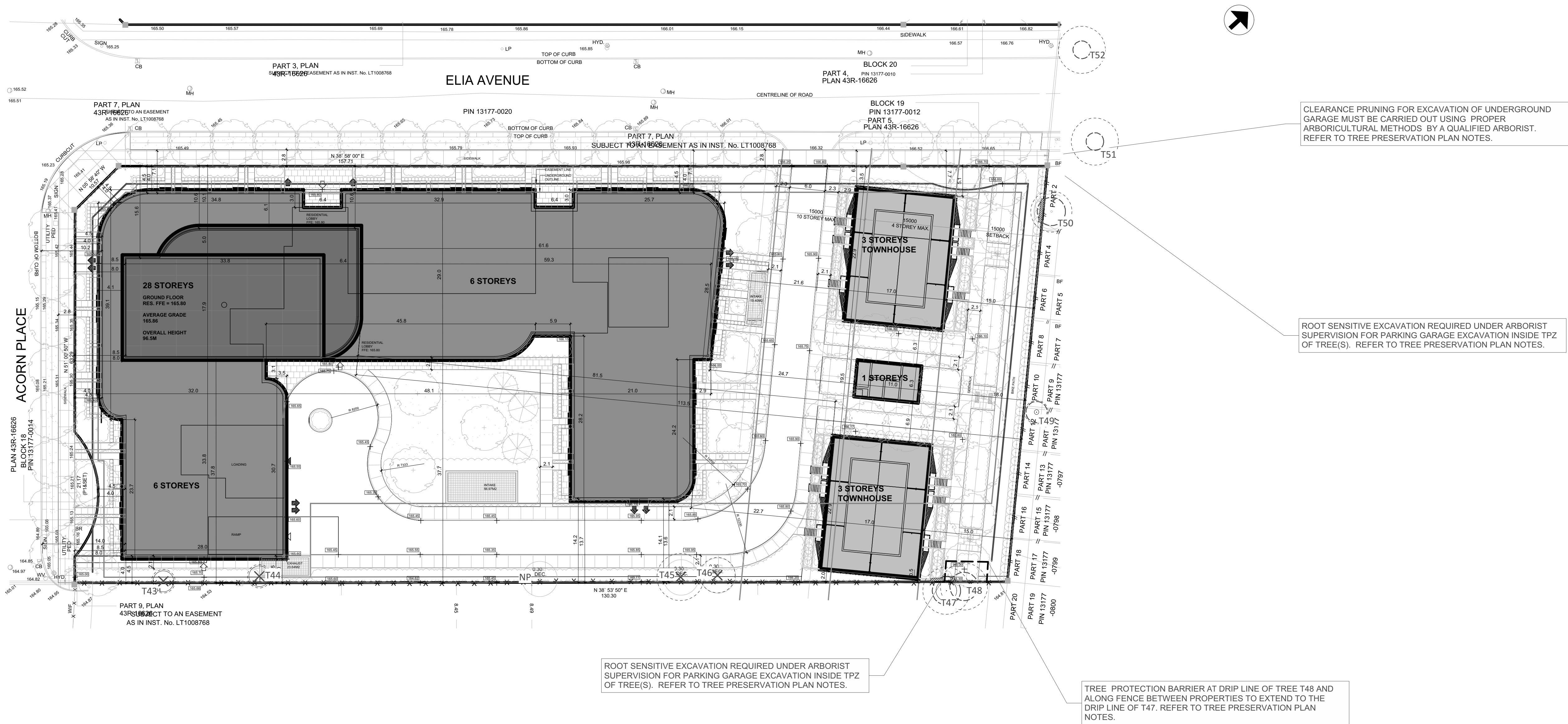
TITLE  
**TREE PRESERVATION PLAN**

SITE  
**ELIA LAND  
BLOCK 4 -  
4615 HURONTARIO STREET**

FILE 111193-5513 SCALE 1:400

SHEET





#### GENERAL NOTES:

1. This plan must be read in conjunction with the arborist report prepared by Cohen & Master Tree and Shrub Services Ltd.
2. Cohen & Master added the tree icons for trees 6, 8, 17, 18, 21, 22, 24, 27, 30, 32, 40, 43, 44, 47, 49, 56, 57, 62, 64, 67, 94, 99, 102, 108, 109, 110, 151, 167, 168, 179, 180, 189, 191 (locations approximate). All other information provided on a site plan prepared by Quadangle Architects Ltd. provided Jan. 26 2021 and based on a topographic survey prepared by J.H. Gelbloom Surveying Ltd. dated 2019.

3	May 17 2021 - Iss. Rezoning
2	Dec. 17 2020
1	Dec. 2 2020
No.	DATE



#### TITLE

### TREE PRESERVATION PLAN

SITE  
ELIA LAND  
BLOCK 5 -  
110 ELIA AVENUE

FILE 11193-5513 SCALE 1:400

SHEET

## TPP-5

#### LEGEND

- T01 INVENTORIED TREE
- MINIMUM TREE PROTECTION ZONE AS PER CITY OF MISSISSAUGA
- DRIP LINE
- TREE PROTECTION BARRIER
- TREE REMOVAL
- ROOT SENSITIVE EXCAVATION
- NP SURVEYED TREE NO LONGER PRESENT



1. TREE PROTECTION ZONES (TPZ)

1.1 REFER TO THE TREE INVENTORY FOR TREE SPECIFIC ACTIONS, INCLUDING MINIMUM TREE PROTECTION ZONE DISTANCES.

1.2 THE DRIP LINE OF A TREE IS THE AREA WHERE THE OUTERMOST BRANCHES REACH. WITHIN THE DRIP LINE THERE IS TO BE NO SOIL DISTURBANCE, EXCAVATION, COMPACTION, MOVEMENT OR STORAGE OF MATERIALS, MACHINERY OR FOOT TRAFFIC, WITHOUT APPROVAL FROM THE CITY OF MISSISSAUGA.

1.3 THE DRIP LINE RADIUS IS PROVIDED IN THE TREE INVENTORY.

1.4 ANY ROOTS EXPOSED BY EXCAVATION OR TRENCHING OUTSIDE OF THE DRIP LINES OF TREES MUST BE CLEANLY CUT. NO TEARING BY MACHINERY IS PERMITTED.

2. TREE PROTECTION FENCING

2.1 TREE PROTECTION FENCING MUST BE INSTALLED AS SHOWN ON THE TREE PROTECTION PLAN AND AS PER APPROVAL FROM THE CITY OF MISSISSAUGA.

2.2 THIS PROJECT IS A MULTI-PHASE PROJECT. TREE PROTECTION BARRIERS ARE TO BE INSTALLED FOR THE PHASE IN WHICH CONSTRUCTION ACTIVITY IS BEING UNDERTAKEN.

2.3 TREE PROTECTION BARRIERS BARRE NOT INDICATED ON THE PLAN FOR THEE MAJORITY OF THE SOUTH AND EAST SIDES OF THE SITE (EXCEPT NEAR TREES 47 AND 48 IN BLOCK 5) AS THERE IS AN EXISTING FENCE AROUND THE PERIMETER OF THE SITE. IN THE EVENT THAT THE FENCE IS DISMANTLED, THE TREE PRESERVATION PLAN MUST BE UPDATED TO SHOW TREE PROTECTION FENCING TO PROTECT ADJACENT TREES.

2.4 HOARDING MUST BE CONSTRUCTED AS PER THE CITY OF MISSISSAUGA HOARDING DETAIL. ON MUNICIPAL PROPERTY, HOARDING IS TO BE CONSTRUCTED OF FRAMED HOARDING; ON PRIVATE PROPERTY HOARDING IS TO BE CONSTRUCTED OF SOLID BOARD HOARDING. MATERIALS LOCATIONS OF BARRIERS TO BE CONFIRMED BY THE CITY OF MISSISSAUGA.

2.5 IT IS THE RESPONSIBILITY OF THE SITE SUPERVISOR TO INSPECT THE CONDITION OF THE TREE PROTECTION MEASURES OUTLINED ON THE PLAN AND WITHIN THE ARBORIST REPORT EACH MORNING. IF DISTURBANCE IS OBSERVED, IT IS TO BE REPAIRED PRIOR TO WORK COMMENCING ON SITE THAT DAY.

2.6 PRIOR TO THE COMMENCEMENT OF ANY CONSTRUCTION ACTIVITY THE CONTRACTOR MUST CONTACT THE CITY OF MISSISSAUGA TO INFORM THEM THAT THE TREE PROTECTION BARRIERS HAVE BEEN INSTALLED AS PER THE TREE PROTECTION PLAN, FOR AN INSPECTION.

2.7 UPON PROJECT COMPLETION (INCLUDING ALL LANDSCAPING) THE CITY OF MISSISSAUGA IS TO BE NOTIFIED PRIOR TO REMOVAL OF THE TREE PROTECTION FENCING ON THE SITE. WITH APPROVAL, THE FENCING MAY BE DISMANTLED.

3. TREE REMOVALS

3.1 BYLAW-PROTECTED TREES ARE ONLY TO BE REMOVED FOLLOWING ISSUANCE OF REMOVAL PERMITS FROM URBAN FORESTRY. WITH PERMIT APPROVAL FROM URBAN FORESTRY, THESE TREES ARE TO BE REMOVED PRIOR TO WORK ON THE SITE. PERMITS MUST BE PRESENT ON THE SITE DURING REMOVALS. REFER TO THE TREE INVENTORY FOR TREES TO BE REMOVED.

3.2 TREES PROPOSED FOR REMOVAL THAT ARE IDENTIFIED AS 'BOUNDARY' TREES IN THE OWNERSHIP COLUMN OF THE TREE INVENTORY REQUIRE THE PERMISSION OF ALL OWNERS FOR THEIR INJURY OR REMOVAL.

4. WORK INSIDE MINIMUM TREE PROTECTION ZONES

4.1 WORK INSIDE THE TPZs OF TREES TO BE PRESERVED MUST BE OVERSEEN BY A QUALIFIED ARBORIST AND CARRIED OUT USING ROOT-SENSITIVE METHODS (BY HAND, AIR SPADE, OR HYDROVAC UNDER 400 PSI).

UNDERGROUND PARKING GARAGE EXCAVATION

4.2 EXCAVATION FOR THE CONSTRUCTION OF UNDERGROUND PARKING GARAGES IN EACH OF THE BLOCKS WILL REQUIRE EXCAVATION INSIDE THE TPZs OF ADJACENT TREES.

4.3 INSIDE THE TPZs OF THE FOLLOWING TREES, THE PERIMETER OF EXCAVATION FOR THE UNDERGROUND PARKING GARAGE MUST BE EXCAVATED USING ROOT SENSITIVE METHODS (BY HAND, AIR SPADE, OR LOW-PRESSURE HYDROVAC UNDER 400 PSI), TO A DEPTH OF 90 cm. ROOT SENSITIVE EXCAVATION MUST BE OVERSEEN BY A QUALIFIED ARBORIST.

- Block 2: Trees 71, 72, 73, 74, 75, 76.  
Block 3: Trees 53, 54, 55, 61, 66, 68  
Block 4: Trees 2, 3,13,16, 22, 23, 25, 26, 28, 29, 32, 34, 36, 38, 39  
Block 5: Trees 47, 50

4.4 PENDING THE ARBORIST'S REVIEW, SMALL DIAMETER ROOTS, UNLESS IN A DENSE MAT, ARE TO BE CLEANLY PRUNED. IF LARGER ROOTS ARE ENCOUNTERED, OR ROOTS IN A DENSE MAT, SUCH THAT THE HEALTH OR STABILITY OF THE TREE IS LIKELY TO BE COMPROMISED, THE TREE MAY REQUIRE REMOVAL WITH OWNER PERMISSION AND CITY APPROVAL, OR THE DESIGN IS TO BE ALTERED TO ACCOMMODATE THE TREE.

RECONSTRUCTION OF SIDEWALKS

4.5 ANY ALTERATION OF MUNICIPAL SIDEWALKS WILL REQUIRE TREE PROTECTION BARRIERS TO BE INSTALLED. ANY WORK INSIDE THE MINIMUM TPZ OF EXISTING TREES WILL REQUIRE ROOT-SENSITIVE METHODS FOR EXCAVATION, UNDER THE SUPERVISION OF A QUALIFIED ARBORIST. ALTERATION OF EXISTING SIDEWALKS TO BE DETERMINED, ROOT SENSITIVE EXCAVATION NOT SHOWN ON TREE PRESERVATION PLAN.

5. PRUNING

5.1 BRANCHES FROM NEIGHBOURING TREES THAT EXTEND ONTO THE SUBJECT SITE MAY REQUIRE PRUNING FOR CLEARANCE TO INSTALL SHORING FOR THE UNDERGROUND PARKING GARAGES.

5.2 FOLLOWING CREATION OF A SHORING PLAN, A PRESCRIPTION FOR THE PRUNING OF NEIGHBOURING TREES IS TO BE PREPARED. ALL PRUNING MUST BE COMPLETED USING PROPER ARBORICULTURAL METHODS BY A QUALIFIED ARBORIST. DROP-CROTCH PRUNING RATHER THAN HEADING CUTS MUST BE USED.

TREE PROTECTION NOTES

89mm x 89mm(4"x4")  
Wood Posts/T-Bar supports firmly  
secured into undisturbed subgrade.

12mm x 1.2m x 2.4m (1/2"x4'x8')  
Plywood boards  
secured firmly to  
Wood Posts /T-Bar supports

1.2m (4 ft)

38mm x 89mm (2"x4" )  
Top & Bottom Rail

8cm (3") Clearance

Existing Grade

Undisturbed  
Subgrade

SOLID HOARDING DETAIL

2.0m (6' 6") maximum  
spacing between post

Drip Line

(38mm x 89mm) 2" x 4"  
Top & Bottom Rail

Existing Grade

Undisturbed  
Subgrade

Metal T-Bar  
Supports

1.2m (4ft)

Plastic Safety  
Fencing


1.2m (4ft)

FRAMED HOARDING DETAIL

NOTES:  
1. Hoarding details to be determined following initial site inspection.  
2. Private tree hoarding to be approved by Development & Design ;  
City tree hoarding to be approved by Community Services Dept.  
3. Hoarding must be supplied, installed and maintained by the applicant throughout all phases of construction.  
Inspection must be conducted by the Development and Design Division prior to removing any/all private hoarding.  
4. Do not allow water to collect and pond behind or within hoarding.  
5. T-bar supports are acceptable alternative to 4x4 posts. U-shaped metal supports will not be accepted.  
6. Plywood must be utilized for 'solid' hoarding. OSB/Chipboard will not be accepted for solid hoarding. Plywood sheets must be installed on "construction" side of frame.  
7. Applicant is responsible to ensure utility locates are completed within city boulevard prior to installing framed hoarding.

TREE PRESERVATION HOARDING

SCALE: N.T.S DATE : June 2017




GENERAL NOTES:

1. This plan must be read in conjunction with the arborist report prepared by Cohen & Master Tree and Shrub Services Ltd.

2. Cohen & Master added the tree icons for trees 6, 8, 17, 18, 21, 22, 24, 27, 30, 32, 40, 43, 44, 47, 49, 56, 57, 62, 64, 67, 94, 99, 102, 108, 109, 110, 151, 167, 168, 179, 180, 189, 191 (locations approximate). All other information provided on a site plan prepared by Quadrangle Architects Ltd. provided Jan. 26 2021 and based on a topographic survey prepared by J.H. Gelbloom Surveying Ltd. dated 2019.

3	May 17 2021 - Iss. Rezoning
2	Dec. 17 2020
1	Dec. 2 2020
No.	DATE



COHEN & MASTER

TREE AND SHRUB SERVICES

42 Guardsman Road, Thornhill, ON L3T 6L4  
416-932-0622 info@cmtrees.com  
CMTREES.COM BE GOOD TO YOUR TREES.

TITLE  
TREE PRESERVATTION  
PLAN

SITE  
ELIA LAND, MISSISSAUGA

FILE 111193-5513

SHEET

TPP-6



Chart Details:

Tree #: Inventoried trees were assigned an identification number.

Species: Includes the botanical name and common name of each tree.

DBH: Diameter in cm measured at 1.4 meters from the ground (diameter at breast height). For trees located on adjacent private property, survey diameter measurement is provided, indicated by \*; for trees Drip Line Radius: Crown radius in meters, measured from farthest branch tip to branch tip.

Minimum TPZ: Minimum required tree protection zone in meters as per the City of Mississauga. Trees that are not bylaw-protected are indicated by \*.

Ownership: private, subject site; private, adjacent; municipal; boundary.

Action: Protect, injure or remove recommendations based on the site plans, and other actions to be taken.

Tree #	Species	DBH (cm)	Drip Line	min. TPZ	Ownership	Action
1	hedge maple ( <i>Acer campestre</i> )	30*	3.5	1.8	private, adjacent	Preserve
2	hedge maple ( <i>Acer campestre</i> )	30*	4	1.8	private, adjacent	Preserve (injure due to excavation for parking garage)
3	hedge maple ( <i>Acer campestre</i> )	25*	3	1.8	private, adjacent	Preserve (injure due to excavation for parking garage)
4	hedge maple ( <i>Acer campestre</i> )	20*	2	1.5	private, adjacent	Preserve
5	hedge maple ( <i>Acer campestre</i> )	30*	3	1.8	private, adjacent	Preserve
6	hedge maple ( <i>Acer campestre</i> )	8, 7.5, 6	2	1.5*	private, subject site	Remove (not bylaw-protected)
7	hedge maple ( <i>Acer campestre</i> )	30*	3.5	1.8	private, adjacent	Preserve
8	hedge maple ( <i>Acer campestre</i> )	8.5, 5.5	2	1.2*	private, subject site	Remove (not bylaw-protected)
9	hedge maple ( <i>Acer campestre</i> )	20*	4	1.5	private, adjacent	Preserve
10	hedge maple ( <i>Acer campestre</i> )	25*	3	1.8	private, adjacent	Preserve
11	hedge maple ( <i>Acer campestre</i> )	30*	5	1.8	private, adjacent	Preserve
12	hedge maple ( <i>Acer campestre</i> )	25*	3.5	1.8	private, adjacent	Preserve
13	hedge maple ( <i>Acer campestre</i> )	25*	4	1.8	private, adjacent	Preserve (injure due to excavation for parking garage)
14	hedge maple ( <i>Acer campestre</i> )	25*	3	1.8	private, adjacent	Preserve
15	hedge maple ( <i>Acer campestre</i> )	30*	3	1.8	private, adjacent	Preserve
16	hedge maple ( <i>Acer campestre</i> )	30*	3	1.8	private, adjacent	Preserve (injure due to excavation for parking garage)
17	hedge maple ( <i>Acer campestre</i> )	9, 4	2	1.2*	private, subject site	Remove (not bylaw-protected)
18	bur oak ( <i>Quercus macrocarpa</i> )	8, 7.5	2	1.5*	private, subject site	Remove (not bylaw-protected)
19	hedge maple ( <i>Acer campestre</i> )	30*	3.5	1.8	private, adjacent	Preserve
20	hedge maple ( <i>Acer campestre</i> )	30*	3.5	1.8	private, adjacent	Preserve
21	hedge maple ( <i>Acer campestre</i> )	8.5	2	1.2*	private, subject site	Remove (not bylaw-protected)
22	hedge maple ( <i>Acer campestre</i> )	30*	3.5	1.8	private, adjacent	Preserve (injure due to excavation for parking garage)
23	hedge maple ( <i>Acer campestre</i> )	30*	3	1.8	private, adjacent	Preserve (injure due to excavation for parking garage)
24	hedge maple ( <i>Acer campestre</i> )	13.5, 9	2	1.5	private, subject site	Remove due to underground parking garage
25	hedge maple ( <i>Acer campestre</i> )	30*	3.5	1.8	private, adjacent	Preserve (injure due to excavation for parking garage)
26	hedge maple ( <i>Acer campestre</i> )	30*	4	1.8	private, adjacent	Preserve (injure due to excavation for parking garage)
27	hedge maple ( <i>Acer campestre</i> )	8, 6	2	1.5*	private, subject site	Remove (not bylaw-protected)
28	hedge maple ( <i>Acer campestre</i> )	30*	3	1.8	private, adjacent	Preserve (injure due to excavation for parking garage)
29	hedge maple ( <i>Acer campestre</i> )	30*	3	1.8	private, adjacent	Preserve (injure due to excavation for parking garage)
30	hedge maple ( <i>Acer campestre</i> )	13	2	1.5*	private, subject site	Remove (not bylaw-protected)
31	bur oak ( <i>Quercus macrocarpa</i> )	79	8	4.8	boundary (private subject site & private adjacent)	Remove due to underground parking garage
32	hedge maple ( <i>Acer campestre</i> )	10-20	1.5	1.5	private, adjacent	Preserve (injure due to excavation for parking garage)
33	hedge maple ( <i>Acer campestre</i> )	30*	3	1.8	private, adjacent	Preserve
34	hedge maple ( <i>Acer campestre</i> )	30*	3.5	1.8	private, adjacent	Preserve (injure due to excavation for parking garage)
35	hedge maple ( <i>Acer campestre</i> )	30*	3.5	1.8	private, adjacent	Preserve
36	hedge maple ( <i>Acer campestre</i> )	30*	3	1.8	private, adjacent	Preserve (injure due to excavation for parking garage)
37	hedge maple ( <i>Acer campestre</i> )	30*	3	1.8	private, adjacent	Preserve
38	hedge maple ( <i>Acer campestre</i> )	30-40 & 20-	3	3	private, adjacent	Preserve (injure due to excavation for parking garage)
39	hedge maple ( <i>Acer campestre</i> )	30*	4	1.8	private, adjacent	Preserve (injure due to excavation for parking garage)
40	Colorado spruce ( <i>Picea pungens</i> )	35-45	2.5	3	municipal	Preserve
41	hedge maple ( <i>Acer campestre</i> )	8.5, 5, 5.3	2	1.5	municipal	Preserve
42	elm hybrid sp.)	13.5	2	1.5	municipal	Preserve
43	green ash ( <i>Fraxinus pennsylvanica</i> )	10 x2, 7	2	1.5	boundary (private subject site & private adjacent)	Remove due to underground parking garage
44	green ash ( <i>Fraxinus</i> )	10.5	2	1.5*	private, subject site	Remove (not bylaw-protected)
45	white mulberry ( <i>Morus alba</i> )	16, 11.5,	4	1.8	private, subject site	Remove due to walkway.
46	green ash ( <i>Fraxinus</i> )	22, 15, 13	3	1.8	private, subject site	Remove due to walkway.
47	Norway maple ( <i>Acer platanoides</i> )	25-35	4	2.4	private, adjacent	Preserve (injure due to excavation for raised planter)
48	Norway maple ( <i>Acer platanoides</i> )	25-35	4	2.4	private, adjacent	Preserve
49	pear ( <i>Pyrus</i> sp.)	5-10 x5	2	1.8	private, adjacent	Preserve
50	sweet cherry ( <i>Prunus avium</i> )	30-40	4	2.4	private, adjacent	Preserve (injure due to excavation for parking garage)

Tree #	Species	DBH (cm)	Drip Line	min. TPZ	Ownership	Action
51	honey locust ( <i>Gleditsia triacanthos</i> )	17.5	3.5	1.5	municipal	Preserve
52	honey locust ( <i>Gleditsia triacanthos</i> )	21.5	4	1.8	municipal	Preserve
53	sweet cherry ( <i>Prunus avium</i> )	10-15 x 4	2.5	1.8	private, adjacent	Preserve (injure due to excavation for parking garage)
54	pear ( <i>Pyrus</i> sp.)	10-15	1.5	1.5*	private, adjacent	Preserve (injure due to excavation for parking garage)
55	sweet cherry ( <i>Prunus avium</i> )	10-15 x 2	2	1.8	private, adjacent	Preserve
56	tree of heaven ( <i>Ailanthus altissima</i> )	10.5	2.5	1.5*	private, subject site	Remove (not bylaw-protected)
57	tree of heaven ( <i>Ailanthus altissima</i> )	11.5, 11.5,	3.5	1.5	private, subject site	Remove due to underground parking garage
58	tree of heaven ( <i>Ailanthus altissima</i> )	48	6	3	private, subject site	Remove due to underground parking garage
59	tree of heaven ( <i>Ailanthus altissima</i> )	14	3	1.5*	private, subject site	Remove (not bylaw-protected)
60	Norway maple ( <i>Acer platanoides</i> )	21.5	3	1.8	private, subject site	Remove due to underground parking garage
61	pear ( <i>Pyrus</i> sp.)	5-10 x4	2.5	1.8	private, adjacent	Preserve (injure due to excavation for parking garage)
62	sweet cherry ( <i>Prunus avium</i> )	10-15	1.5	1.5*	private, adjacent	Preserve (injure due to excavation for parking garage)
63	Colorado spruce ( <i>Picea pungens</i> )	13	1	1.5*	private, subject site	Remove (not bylaw-protected)
64	eastern white cedar ( <i>Thuja occidentalis</i> )	10	1	1.5*	private, subject site	Remove (not bylaw-protected)
65	Colorado spruce ( <i>Picea pungens</i> )	16	2	1.5	private, subject site	Remove due to underground parking garage
66	crabapple ( <i>Malus</i> sp.)	5-10 & 10-15	2	1.8	private, adjacent	Preserve (injure due to excavation for parking garage)
67	pear ( <i>Pyrus</i> sp.)	10-15	2	1.5*	private, adjacent	Preserve
68	cherry ( <i>Prunus</i> sp)	20-30 & 10-	3	2.4	private, adjacent	Preserve (injure due to excavation for parking garage)
69	Norway maple ( <i>Acer platanoides</i> )	10	1.5	1.5	municipal	Preserve
70	littelleaf linden ( <i>Tilia cordata</i> )	13	2	1.5	municipal	Preserve
71	white ash ( <i>Fraxinus americana</i> )	15-25	3	1.8	private, adjacent	Preserve (injure due to excavation for parking garage)
72	white ash ( <i>Fraxinus americana</i> )	15-25	3	1.8	private, adjacent	Preserve (injure due to excavation for parking garage)
73	white ash ( <i>Fraxinus americana</i> )	15-25	3	1.8	private, adjacent	Preserve (injure due to excavation for parking garage)
74	white ash ( <i>Fraxinus americana</i> )	15-25	3	1.8	private, adjacent	Preserve (injure due to excavation for parking garage)
75	white ash ( <i>Fraxinus americana</i> )	15-25	3	1.8	private, adjacent	Preserve (injure due to excavation for parking garage)
76	white ash ( <i>Fraxinus americana</i> )	15-25	3	1.8	private, adjacent	Preserve (injure due to excavation for parking garage)
77	Norway maple ( <i>Acer platanoides</i> )	30-40	3.5	2.4	private, adjacent	Preserve
78	crabapple ( <i>Malus</i> sp.)	18	3	1.5	municipal	Preserve
79	littelleaf linden ( <i>Tilia cordata</i> )	13.5	2	1.5	municipal	Preserve
80	littelleaf linden ( <i>Tilia cordata</i> )	22	3.5	1.8	municipal	Preserve (injure for sidewalk widening)
81	littelleaf linden ( <i>Tilia cordata</i> )	20.5	3.5	1.8	municipal	Preserve (injure for sidewalk widening)
82	littelleaf linden ( <i>Tilia cordata</i> )	19	3	1.5	municipal	Preserve (injure for sidewalk widening)
83	Norway maple ( <i>Acer platanoides</i> )	19	3	1.5	municipal	Preserve (injure for sidewalk widening)
84	hybrid elm ( <i>Ulmus</i> sp.)	3	0.5	1.2	municipal	Preserve (injure for sidewalk widening)
85	hybrid elm ( <i>Ulmus</i> sp.)	4	0.5	1.2	municipal	Preserve (injure for sidewalk widening)
86	hybrid elm ( <i>Ulmus</i> sp.)	4	0.5	1.2	municipal	Preserve (injure for sidewalk widening)
87	Norway maple ( <i>Acer platanoides</i> )	19	2.5	1.5	municipal	Preserve (injure for sidewalk widening)
88	littelleaf linden ( <i>Tilia cordata</i> )	20.5	3	1.8	municipal	Preserve (injure for sidewalk widening)
89	honey locust ( <i>Gleditsia triacanthos</i> )	3	0.5	1.2	municipal	Preserve (injure for sidewalk widening)
90	littelleaf linden ( <i>Tilia cordata</i> )	20.5	3	1.8	municipal	Preserve (injure for sidewalk widening)
91	honey locust ( <i>Gleditsia triacanthos</i> )	3	0.5	1.2	municipal	Preserve (injure for sidewalk widening)
92	littelleaf linden ( <i>Tilia cordata</i> )	3	0.5	1.2	municipal	Preserve (injure for sidewalk widening)
93	littelleaf linden ( <i>Tilia cordata</i> )	4	0.5	1.2	municipal	Preserve (injure for sidewalk widening)
94	littelleaf linden ( <i>Tilia cordata</i> )	4.5	0.5	1.2	municipal	Preserve (injure for sidewalk widening)
95	sugar maple ( <i>Acer saccharum</i> )	4.5	0.5	1.2	municipal	Preserve (injure for sidewalk widening)
96	sugar maple ( <i>Acer saccharum</i> )	4.5	0.5	1.2	municipal	Preserve (injure for sidewalk widening)
97	sugar maple ( <i>Acer saccharum</i> )	4.5	0.5	1.2	municipal	Preserve (injure for sidewalk widening)
98	sugar maple ( <i>Acer saccharum</i> )	4	0.5	1.2	municipal	Preserve (injure for sidewalk widening)
99	sugar maple ( <i>Acer saccharum</i> )	4.5	0.5	1.2	municipal	Preserve (injure for sidewalk widening)
100	sugar maple ( <i>Acer saccharum</i> )	4	0.5	1.2	municipal	Preserve (injure for sidewalk widening)
101	sugar maple ( <i>Acer saccharum</i> )	4.5	4.5	1.2	municipal	Preserve (injure for sidewalk widening)
102	basswood ( <i>Tilia americana</i> )	3.5	0.5	1.2	municipal	Preserve (injure for sidewalk widening)
103	littelleaf linden ( <i>Tilia cordata</i> )	21.5	3	1.8	municipal	Preserve (injure for sidewalk widening)
104	littelleaf linden ( <i>Tilia cordata</i> )	3	0.5	1.2	municipal	Preserve (injure for sidewalk widening)
105	honey locust ( <i>Gleditsia triacanthos</i> )	3	0.5	1.2	municipal	Preserve (injure for sidewalk widening)
106	honey locust ( <i>Gleditsia triacanthos</i> )	4	0.5	1.2	municipal	Preserve (injure for sidewalk widening)
107	Kentucky coffeetree ( <i>Gymnocladus dioica</i> )	4.5	0.5	1.2	municipal	Preserve (injure for sidewalk widening)
108	Kentucky coffeetree ( <i>Gymnocladus dioica</i> )	4	0.5	1.2	municipal	Preserve (injure for sidewalk widening)
109	Kentucky coffeetree ( <i>Gymnocladus dioica</i> )	4	0.5	1.2	municipal	Preserve (injure for sidewalk widening)

Tree #	Species	DBH (cm)	Drip Line	min. TPZ	Ownership	Action
110	Norway maple ( <i>Acer platanoides</i> )	27	3.5	1.8	private, subject site	Preserve
111	Norway maple ( <i>Acer platanoides</i> )	24	3.5	1.8	private, subject site	Preserve
112	Norway maple ( <i>Acer platanoides</i> )	18	3	1.5	private, subject site	Preserve
113	Norway maple ( <i>Acer platanoides</i> )	26	3.5	1.8	private, subject site	Remove due to underground parking garage
114	Norway maple ( <i>Acer platanoides</i> )	18	2	1.5	private, subject site	Remove due to underground parking garage
115	Norway maple ( <i>Acer platanoides</i> )	25	3.5	1.8	private, subject site	Remove due to underground parking garage
116	honey locust ( <i>Gleditsia triacanthos</i> )	18	3	1.5	private, subject site	Remove due to underground parking garage
117	honey locust ( <i>Gleditsia triacanthos</i> )	16.5	3	1.5	private, subject site	Remove due to underground parking garage
118	honey locust ( <i>Gleditsia triacanthos</i> )	17	3	1.5	private, subject site	Remove due to underground parking garage
119	honey locust ( <i>Gleditsia triacanthos</i> )	16.5	3	1.5	private, subject site	Remove due to underground parking garage
120	honey locust ( <i>Gleditsia triacanthos</i> )	16.5	3.5	1.5	private, subject site	Remove due to underground parking garage
121	honey locust ( <i>Gleditsia triacanthos</i> )	17.5	3	1.5	private, subject site	Remove due to underground parking garage
122	honey locust ( <i>Gleditsia triacanthos</i> )	17	3.5	1.5	private, subject site	Remove due to underground parking garage
123	Norway maple ( <i>Acer platanoides</i> )	16	2.5	1.5	private, subject site	Remove due to underground parking garage
124	Norway maple ( <i>Acer platanoides</i> )	30	4	2.4	private, subject site	Remove due to underground parking garage
125	Norway maple ( <i>Acer platanoides</i> )	23.5	3	1.8	private, subject site	Remove due to underground parking garage
126	honey locust ( <i>Gleditsia triacanthos</i> )	12.5	2	1.5*	private, subject site	Remove (not bylaw-protected)
127	honey locust ( <i>Gleditsia triacanthos</i> )	15	3	1.5	private, subject site	Remove due to underground parking garage
128	honey locust ( <i>Gleditsia triacanthos</i> )	12.5	2.5	1.5*	private, subject site	Remove (not bylaw-protected)
129	honey locust ( <i>Gleditsia triacanthos</i> )	20.5	4	1.5	private, subject site	Remove due to underground parking garage
130	honey locust ( <i>Gleditsia triacanthos</i> )	9.5, 9, 8.5,	3	1.5	private, subject site	Remove due to underground parking garage
131	honey locust ( <i>Gleditsia triacanthos</i> )	17.5	3	1.5	private, subject site	Remove due to underground parking garage
132	honey locust ( <i>Gleditsia triacanthos</i> )	15.5	3	1.5	private, subject site	Remove due to underground parking garage
133	honey locust ( <i>Gleditsia triacanthos</i> )	16	3	1.5	private, subject site	Remove due to underground parking garage
134	honey locust ( <i>Gleditsia triacanthos</i> )	16	3	1.5	private, subject site	Remove due to underground parking garage
135	honey locust ( <i>Gleditsia triacanthos</i> )	17	3	1.5	private, subject site	Remove due to underground parking garage
136	Colorado spruce ( <i>Picea pungens</i> )	30.5	3	2.4	private, subject site	Remove due to underground parking garage
137	Colorado spruce ( <i>Picea pungens</i> )	20	3	1.5	private, subject site	Remove due to underground parking garage
138	Norway maple ( <i>Acer platanoides</i> )	33	3	2.4	private, subject site	Preserve
139	Norway maple ( <i>Acer platanoides</i> )	25	5	1.8	private, subject site	Remove due to underground parking garage
140	honey locust ( <i>Gleditsia triacanthos</i> )	15	3	1.5	private, subject site	Preserve
141	Austrian pine ( <i>Pinus nigra</i> )	37	4.5	2.4	private, subject site	Preserve
142	Austrian pine ( <i>Pinus nigra</i> )	36.5	4	2.4	private, subject site	Preserve
143	Austrian pine ( <i>Pinus nigra</i> )	36.5	4	2.4	private, subject site	Preserve
144	Norway maple ( <i>Acer platanoides</i> )	35.5	3.5	2.4	private, subject site	Preserve
145	Norway maple ( <i>Acer platanoides</i> )	25.5	3.5	1.8	private, subject site	Preserve
146	Colorado spruce ( <i>Picea pungens</i> )	22	3	1.8	private, subject site	Preserve
147	Norway maple ( <i>Acer platanoides</i> )	26	3.5	1.8	private, subject site	Preserve
148	Norway maple ( <i>Acer platanoides</i> )	24.5	3.5	1.8	private, subject site	Preserve
149	Norway maple ( <i>Acer platanoides</i> )	17	2.5	1.5	private, subject site	Preserve
150	Callery pear ( <i>Pyrus calleryana</i> )	8	1.5	1.2*	private, subject site	Preserve
151	Callery pear ( <i>Pyrus calleryana</i> )	6	1	1.2*	private, subject site	Preserve
152	Norway maple ( <i>Acer platanoides</i> )	22	3.5	1.8	private, subject site	Preserve
153	Norway maple ( <i>Acer platanoides</i> )	25	3.5	1.8	private, subject site	Preserve
154	Austrian pine ( <i>Pinus nigra</i> )	50.5	5	3.6	private, subject site	Preserve
155	honey locust ( <i>Gleditsia triacanthos</i> )	7.5	1.5	1.2*	private, subject site	Preserve
156	Colorado spruce ( <i>Picea pungens</i> )	25	2.5	1.8	private, subject site	Preserve
157	Colorado spruce ( <i>Picea pungens</i> )	31.5	4	2.4	private, subject site	Preserve
158	Colorado spruce ( <i>Picea pungens</i> )	26	3	1.8	private, subject site	Preserve
159	Norway maple ( <i>Acer platanoides</i> )	26.5	3.5	1.8	private, subject site	Preserve
160	Colorado spruce ( <i>Picea pungens</i> )	26.5	2	1.8	private, subject site	Preserve
161	Colorado spruce ( <i>Picea pungens</i> )	22	2.5	1.8	private, subject site	Preserve
162	Norway maple ( <i>Acer platanoides</i> )	24	3.5	1.8	private, subject site	Preserve
163	Colorado spruce ( <i>Picea pungens</i> )	24	3	1.8	private, subject site	Preserve
164	Colorado spruce ( <i>Picea pungens</i> )	26	3	1.8	private, subject site	Preserve
165	Norway maple ( <i>Acer platanoides</i> )	32.5	4	2.4	private, subject site	Preserve
166	Norway maple ( <i>Acer platanoides</i> )	31	3.5	2.4	private, subject site	Preserve
167	Callery pear ( <i>Pyrus calleryana</i> )	6.5	1.5	1.2*	private, subject site	Preserve (injure for sidewalk widening)
168	Callery pear ( <i>Pyrus calleryana</i> )	7	1.5	1.2*	private, subject site	Preserve (injure for sidewalk widening)