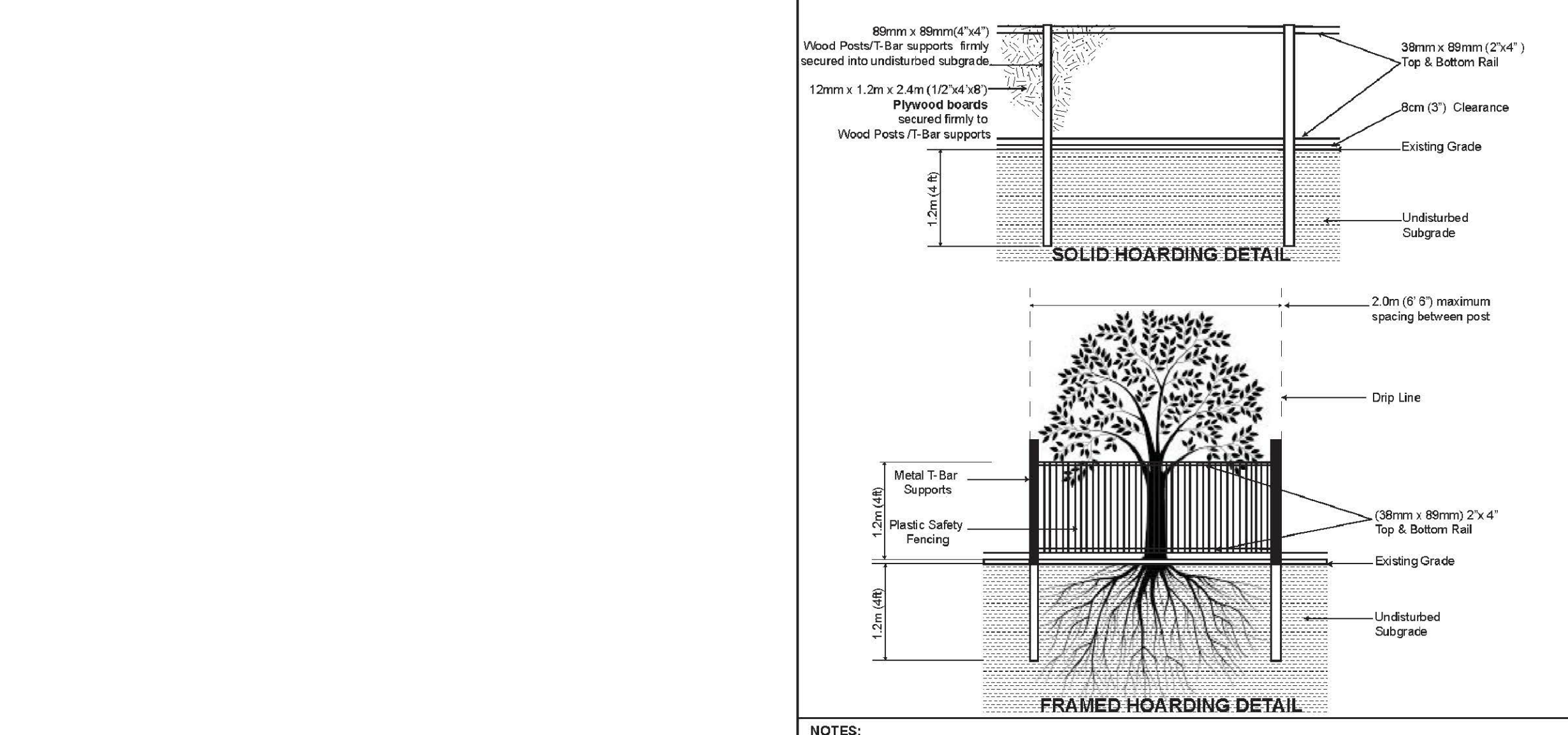


EXISTING TREE INVENTORY

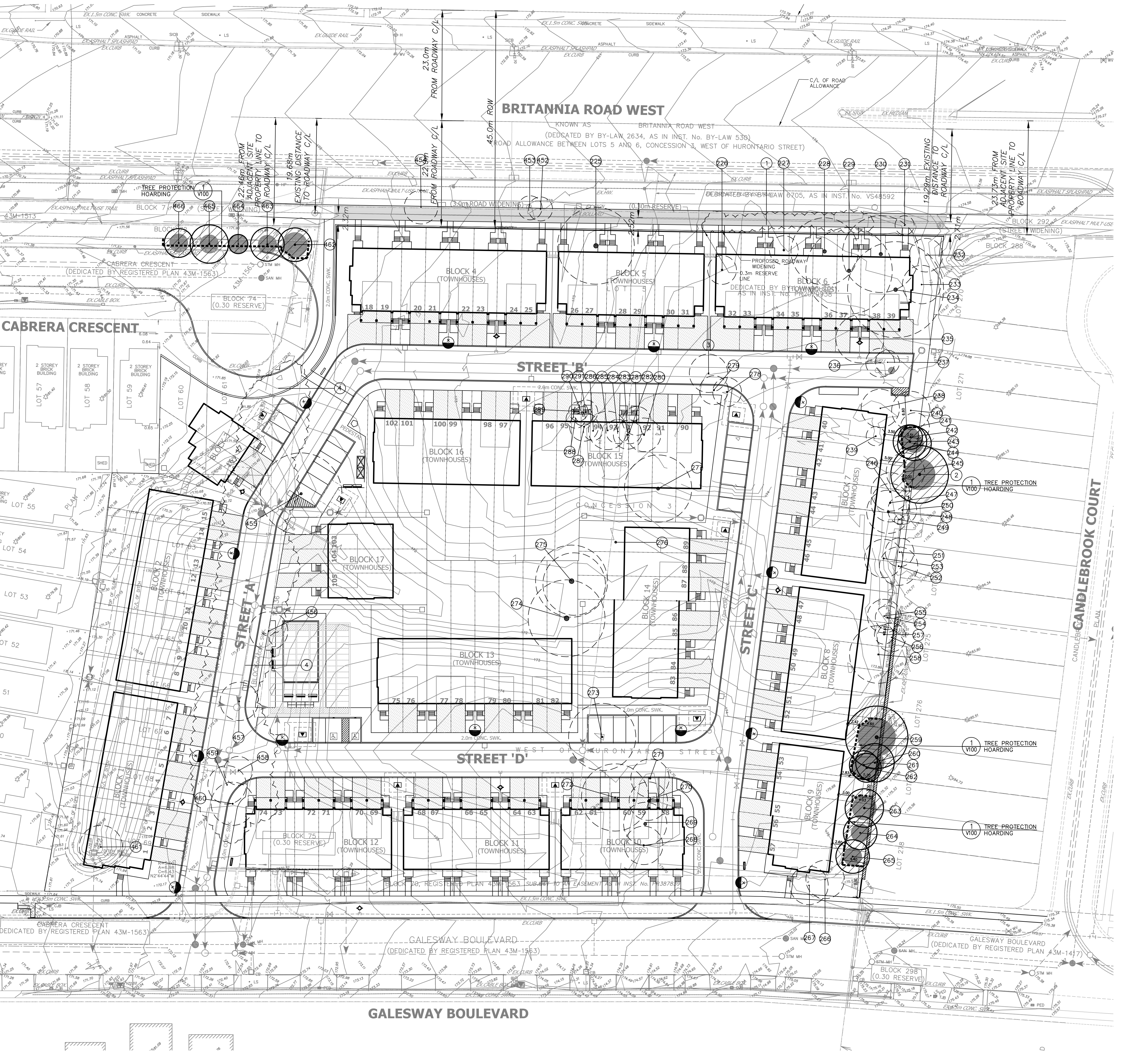
| Tag No. | Tree Species | Diameter (cm) | Crown Dia. (m) | Health G/F/P | Structure | Comments | ACTION | Action | Tag No. |
|---------|----------------------|---------------|----------------|--------------|-------------------|---|----------|--------|---------|
| 225 | WEeping WILLOW | 96.0 | 16.0 | GOOD | BROAD FORM | DECAY IN STEM, BROKEN LIMBS THROUGHOUT, EPICORMIC SHOOTS THROUGHOUT | REMOVE | 6 | 225 |
| 226 | COLORADO BLUE SPRUCE | 38.0 | 6.0 | GOOD | GOOD FORM | BRANCHING TO GRADE | REMOVE | 2.4 | 226 |
| 227 | COLORADO BLUE SPRUCE | 39.0 | 6.0 | GOOD | GOOD FORM | BRANCHING TO GRADE | REMOVE | 2.4 | 227 |
| 228 | SILVER MAPLE | 30.7-4 | 14.0 | FAIR | DOUBLE STEM | ASYMMETRICAL FORM, NARROW FORM, CROWDING BY ADJACENT TREE, EPICORMIC BRANCHING | REMOVE | 4.8 | 228 |
| 229 | SILVER MAPLE | 11-7.4 | 18.0 | FAIR | MULTI-STEMMED | ASYMMETRICAL FORM, CROWDING BY ADJACENT TREE, LOW BRANCHING, SOME DEADWOOD AND DIEBACK IN CROWN | REMOVE | 4.8 | 229 |
| 230 | WEeping WILLOW | 71.0 | 16.0 | POOR | DOUBLE STEM | DEADWOOD AND DIEBACK THROUGHOUT | REMOVE | 4.8 | 230 |
| 231 | SCOTS PINE | 20.0 | 4.0 | GOOD | HIGH CROWN | DIEBACK ON LOWER BRANCHES | REMOVE | 1.8 | 231 |
| 232 | HAWTHORN | 16.0 | 7.0 | POOR | ONE SIDED FORM | CROWDING BY ADJACENT TREE, DIEBACK ON LOWER BRANCHES | REMOVE | 1.8 | 232 |
| 233 | SHAGBARK HICKORY | 23.0 | 8.0 | GOOD | NARROW FORM | CROWDING BY ADJACENT TREE, MINOR DIEBACK ON LOWER BRANCHES | REMOVE | 1.8 | 233 |
| 234 | WEeping WILLOW | 78.0 | 20.0 | GOOD | BROAD FORM | DOUBLE LEADERS, EPICORMIC GROWTH AND DIEBACK ON LOWER BRANCHES, SOME DEADWOOD AND DIEBACK IN CROWN | REMOVE | 4.8 | 234 |
| 235 | WHITE SPRUCE | 48.0 | 10.0 | GOOD | GOOD FORM | BRANCHING TO GRADE | REMOVE | 3 | 235 |
| 236 | WHITE CEDAR | 21.0 | 6.0 | GOOD | DOUBLE STEM | ONE SIDED FORM, PART OF CEDAR GROUPING | REMOVE | 1.8 | 236 |
| 237 | WHITE CEDAR | 16.0 | 5.0 | GOOD | MULTI-STEMMED | NARROW FORM, PART OF CEDAR GROUPING | REMOVE | 1.8 | 237 |
| 238 | CRABAPPLE | 21.0 | 8.0 | FAIR | MULTI-STEMMED | ONE SIDED FORM, CROWDING BY ADJACENT TREE, DIEBACK AND SUCKER GROWTH ON LOWER BRANCHES | REMOVE | 1.8 | 238 |
| 239 | JUNIPER | 26.0 | 4.0 | GOOD | GOOD FORM | DIEBACK ON LOWER BRANCHES | REMOVE | 1.8 | 239 |
| 240 | HAWTHORN | 23.0 | 6.0 | POOR | MULTI-STEMMED | DIEBACK THROUGHOUT | REMOVE | 1.8 | 240 |
| 241 | HAWTHORN | 23.0 | 6.0 | POOR | MULTI-STEMMED | ONE SIDED FORM, CROWDING BY ADJACENT TREE, DECLINING | REMOVE | 1.8 | 241 |
| 242 | NORWAY MAPLE | 18.0 | 5.0 | FAIR | NARROW FORM | HIGH CROWN, CROWDING BY ADJACENT TREE | PRESERVE | 1.8 | 242 |
| 243 | BUR OAK | 29.0 | 7.0 | FAIR | ONE SIDED FORM | CROWDING BY ADJACENT TREE, HIGH CROWN, SOME DIEBACK IN CROWN | PRESERVE | 1.8 | 243 |
| 244 | SHAGBARK HICKORY | 17.0 | 7.0 | GOOD | ONE SIDED FORM | CROWDING BY ADJACENT TREE | PRESERVE | 1.8 | 244 |
| 245 | HAWTHORN | 19.0 | 8.0 | POOR | ONE SIDED FORM | CROWDING BY ADJACENT TREE, DIEBACK THROUGHOUT | REMOVE | 1.8 | 245 |
| 246 | ASH | 32.0 | 8.0 | DEAD | | | REMOVE | 2.4 | 246 |
| 247 | ASH | 35.0 | 8.0 | DEAD | | | REMOVE | 2.4 | 247 |
| 248 | ASH | 48.0 | 9.0 | DEAD | | | REMOVE | 3 | 248 |
| 249 | BUR OAK | 22.5 | 6.0 | POOR | ONE SIDED FORM | DECLINING | REMOVE | 1.8 | 249 |
| 251 | ASH | 21.0 | 6.0 | FAIR | ONE SIDED FORM | CROWDING BY ADJACENT TREE, HIGH CROWN, DIEBACK ON LOWER BRANCHES | REMOVE | 1.8 | 251 |
| 252 | ASH | 25.0 | 6.0 | POOR | ONE SIDED FORM | CROWDING BY ADJACENT TREE, HIGH CROWN, DIEBACK ON LOWER BRANCHES | REMOVE | 1.8 | 252 |
| 253 | HAWTHORN | 30.0 | 6.0 | POOR | MULTI-STEMMED | FAILED LIMBS, DECLINING | REMOVE | 2.4 | 253 |
| 254 | HAWTHORN | 14.0 | 5.0 | FAIR | ONE SIDED FORM | CROWDING BY ADJACENT TREE, SOME DIEBACK THROUGHOUT | REMOVE | 1.8 | 254 |
| 255 | HAWTHORN | 23.0 | 7.0 | POOR | MULTI-STEMMED | ONE SIDED FORM, CROWDING BY ADJACENT TREE, DIEBACK THROUGHOUT | REMOVE | 1.8 | 255 |
| 256 | HAWTHORN | 19.0 | 6.0 | POOR | ONE SIDED FORM | SUBORDINATED BY ADJACENT TREE | REMOVE | 1.8 | 256 |
| 257 | HAWTHORN | 25.0 | 4.0 | POOR | IRREGULAR FORM | DECLINING | REMOVE | 1.8 | 257 |
| 258 | BUR OAK | 30.0 | 12.0 | FAIR | MULTI-STEMMED | UPPER CROWN SERIOUSLY ENTRAPPED WITH WILD GRAPE VINES | REMOVE | 1.8 | 258 |
| 259 | BUR OAK | 59.0 | 13.0 | FAIR | BROAD FORM | RETAINING WALL ADJACENT TO EAST SIDE OF STEM DIEBACK ON LOWER BRANCHES, SOME DEADWOOD AND EPICORMIC SHOOTS THROUGHOUT CROWN | PRESERVE | 3.6 | 259 |
| 260 | BUR OAK | 30.0 | 6.0 | FAIR | ONE SIDED FORM | HIGH CROWN, CROWDING BY ADJACENT TREE, DIEBACK ON LOWER BRANCHES | PRESERVE | 2.4 | 260 |
| 261 | HAWTHORN | 23.0 | 4.0 | FAIR | ONE SIDED FORM | CROWDING BY ADJACENT TREE | REMOVE | 1.8 | 261 |
| 262 | BUR OAK | 30.0 | 6.0 | FAIR | NARROW FORM | HIGH CROWN, CROWDING BY ADJACENT TREE | PRESERVE | 2.4 | 262 |
| 263 | BASSWOOD | 31.0 | 6.0 | POOR | IRREGULAR FORM | DECLINING | PRESERVE | 2.4 | 263 |
| 264 | HAWTHORN | 17.0 | 7.0 | FAIR | ASYMMETRICAL FORM | CROWDING BY ADJACENT TREE, DIEBACK ON LOWER BRANCHES | PRESERVE | 1.8 | 264 |
| 265 | BASSWOOD | 18.0 | 7.0 | GOOD | MULTI-STEMMED | MINOR DIEBACK ON LOWER BRANCHES | PRESERVE | 1.8 | 265 |
| 266 | BASSWOOD | 23.0 | 8.0 | GOOD | MULTI-STEMMED | DENSE CLUSTER OF SEVERAL STEMS, CROWDING BY ADJACENT TREE | REMOVE | 1.8 | 266 |
| 267 | BASSWOOD | 8.0 | 18.0 | GOOD | MULTI-STEMMED | BROAD FORM, CROWDING BY ADJACENT TREE | REMOVE | 1.8 | 267 |
| 268 | AUSTRIAN PINE | 38.0 | 8.0 | GOOD | GOOD FORM | CROWDING BY ADJACENT TREE | REMOVE | 2.4 | 268 |
| 269 | AUSTRIAN PINE | 64.0 | 9.0 | GOOD | DOUBLE STEM | STEMS FUSED TOGETHER | REMOVE | 4.2 | 269 |
| 270 | AUSTRIAN PINE | 40.0 | 8.0 | GOOD | DOUBLE LEADER | ELATED LEADER | REMOVE | 2.4 | 270 |
| 271 | AUSTRIAN PINE | 41.0 | 8.0 | GOOD | GOOD FORM | GIRDLED ROOTS | REMOVE | 3 | 271 |
| 272 | WEeping WILLOW | 30.0 | 14.0 | GOOD | MULTI-STEMMED | BROAD FORM, BROKEN LIMBS IN CROWN, NEW GROWTH THROUGHOUT | REMOVE | 2.4 | 272 |
| 273 | WEeping WILLOW | 24.0 | 14.0 | GOOD | MULTI-STEMMED | BROAD FORM, BROKEN LIMBS IN CROWN, NEW GROWTH THROUGHOUT | REMOVE | 2.4 | 273 |
| 274 | WEeping WILLOW | 102.0 | 16.0 | POOR | DOUBLE STEM | ONE STEM FAILED | REMOVE | 6.12 | 274 |
| 275 | WEeping WILLOW | 101.0 | 15.0 | FAIR | ONE SIDED FORM | SEVERAL BROKEN LIMBS AND BRANCHES, EPICORMIC SHOOTS THROUGHOUT | REMOVE | 6.06 | 275 |
| 276 | SILVER MAPLE | 44.0 | 13.0 | GOOD | MULTI-STEMMED | DIEBACK ON LOWER BRANCHES, MINOR DECAY IN CROWN | REMOVE | 3 | 276 |
| 277 | SILVER MAPLE | 65.0 | 14.0 | POOR-FAIR | MULTI-STEMMED | MATURE, DECLINING CROWN WITH EPICORMIC GROWTH THROUGHOUT | REMOVE | 4.2 | 277 |
| 278 | COLORADO BLUE SPRUCE | 35.0 | 6.0 | GOOD | GOOD FORM | MINOR DIEBACK ON LOWER BRANCHES | REMOVE | 2.4 | 278 |
| 279 | COLORADO BLUE SPRUCE | 30.0 | 6.0 | FAIR | GOOD FORM | TWIG TIP DIEBACK THROUGHOUT | REMOVE | 2.4 | 279 |
| 280 | SCOTS PINE | 30.0 | 7.0 | GOOD | ONE SIDED FORM | CROWDING BY ADJACENT TREE | REMOVE | 1.8 | 280 |
| 281 | WHITE CEDAR | 25.0 | 6.0 | GOOD | MULTI-STEMMED | CROWDING BY ADJACENT TREE | REMOVE | 1.8 | 281 |
| 282 | SCOTS PINE | 26.0 | 5.0 | GOOD | NARROW FORM | HIGH CROWN, CROWDING BY ADJACENT TREE | REMOVE | 1.8 | 282 |
| 283 | WHITE PINE | 25.0 | 4.0 | GOOD | ONE SIDED FORM | HIGH CROWN, CROWDING BY ADJACENT TREE | REMOVE | 1.8 | 283 |
| 284 | WHITE CEDAR | 19.0 | 5.0 | GOOD | DOUBLE STEM | ONE SIDED FORM, CROWDING BY ADJACENT TREE | REMOVE | 1.8 | 284 |
| 285 | SCOTS PINE | 26.0 | 8.0 | GOOD | IRREGULAR FORM | CROWDING BY ADJACENT TREE, DIEBACK ON LOWER BRANCHES | REMOVE | 1.8 | 285 |
| 286 | WHITE CEDAR | 25.0 | 4.0 | GOOD | ONE SIDED FORM | CROWDING BY ADJACENT TREE | REMOVE | 1.8 | 286 |
| 287 | WHITE CEDAR | 28.0 | 6.0 | GOOD | MULTI-STEMMED | ONE SIDED FORM, CROWDING BY ADJACENT TREE | REMOVE | 1.8 | 287 |
| 288 | WHITE CEDAR | 16.0 | 4.0 | GOOD | DOUBLE STEM | ONE SIDED FORM, CROWDING BY ADJACENT TREE | REMOVE | 1.8 | 288 |
| 289 | WHITE CEDAR | 15.0 | 4.0 | GOOD | DOUBLE STEM | ONE SIDED FORM, CROWDING BY ADJACENT TREE | REMOVE | 1.8 | 289 |
| 290 | WHITE CEDAR | 15.0 | 4.0 | GOOD | DOUBLE STEM | ONE SIDED FORM, CROWDING BY ADJACENT TREE | REMOVE | 1.8 | 290 |
| 291 | WHITE CEDAR | 25.0 | 5.0 | GOOD | DOUBLE STEM | ONE SIDED FORM, CROWDING BY ADJACENT TREE | REMOVE | 1.8 | 291 |
| 452 | RUSSIAN OLIVE | 19.0 | 5.0 | POOR | MULTI-STEMMED | ONE SIDED FORM, CROWDING BY ADJACENT TREE, SIGNIFICANT CROWN DIEBACK | REMOVE | 1.8 | 452 |
| 453 | RUSSIAN OLIVE | 15.0 | 5.0 | POOR | MULTI-STEMMED | ONE SIDED FORM, CROWDING BY ADJACENT TREE, SIGNIFICANT CROWN DIEBACK | REMOVE | 1.8 | 453 |
| 454 | RUSSIAN OLIVE | 17.0 | 7.0 | POOR | MULTI-STEMMED | SIGNIFICANT CROWN DIEBACK | REMOVE | 1.8 | 454 |
| 455 | CRACK WILLOW | 52.0 | 17.0 | FAIR | IRREGULAR FORM | LEANING, DEADWOOD AND DIEBACK THROUGHOUT, LOTS OF NEW EPICORMIC GROWTH THROUGHOUT | REMOVE | 3.6 | 455 |
| 456 | BUR OAK | 11-22 | 8.0 | FAIR | HIGH CROWN | NARROW FORM, CROWDING BY ADJACENT TREE, SOME TWIG TIP DIEBACK IN CROWN | REMOVE | 1.8 | 456 |
| 457 | HAWTHORN | 25.0 | 8.0 | FAIR | MULTIPLE LEADERS | BROAD FORM, CROWDING BY ADJACENT TREE, DIEBACK THROUGHOUT | REMOVE | 1.8 | 457 |
| 458 | HAWTHORN | 18.0 | 6.0 | FAIR | ONE SIDED FORM | CROWDING BY ADJACENT TREE, DIEBACK IN CROWN | REMOVE | 1.8 | 458 |
| 459 | HAWTHORN | 20.0 | 8.0 | FAIR | ONE SIDED FORM | CROWDING BY ADJACENT TREE, DIEBACK IN CROWN | REMOVE | 1.8 | 459 |
| 460 | HAWTHORN | 28.0 | 10.0 | FAIR | ONE SIDED FORM | CROWDING BY ADJACENT TREE, DIEBACK IN CROWN | REMOVE | 1.8 | 460 |
| 461 | POPLAR | 24.0 | 9.0 | GOOD | MULTI-STEMMED | BRANCHING TO GRADE | REMOVE | 1.8 | 461 |
| 462 | SIBERIAN ELM | 30.0 | 7.0 | GOOD | GOOD FORM | GIRDLED ROOTS | PRESERVE | 2.4 | 462 |
| 463 | SIBERIAN ELM | 24.0 | 7.0 | GOOD | GOOD FORM | GIRDLED ROOTS | PRESERVE | 1.8 | 463 |
| 464 | SIBERIAN ELM | 11.0 | 4.0 | GOOD | GOOD FORM | GIRDLED ROOTS | PRESERVE | 1.8 | 464 |
| 465 | SIBERIAN ELM | 25.0 | 8.0 | GOOD | GOOD FORM | GIRDLED ROOTS | PRESERVE | 1.8 | 465 |
| 466 | SIBERIAN ELM | 20.0 | 6.0 | GOOD | GOOD FORM | GIRDLED ROOTS | PRESERVE | 1.8 | 466 |

| Key # | Tree Species | Diameter (cm) | Crown Dia. (m) | Health G/F/P | Structure | Comments | Owner | Action | Tag No. |
|-------|---------------------|---------------|----------------|--------------|-------------------|--|-------|----------|---------|
| 1 | CEDAR HEDGE | WHIP-14 | 4.0 | GOOD | GOOD FORM | CONTINUOUS, DENSE CEDAR HEDGE | | REMOVE | 1 |
| 2 | BUR OAK | 45.0 | 12.0 | GOOD | ASYMMETRICAL FORM | EPICORMIC SHOOTS THROUGHOUT CROWN | | PRESERVE | 3 |
| 3 | WHITE BIRCH | 24.0 | 8.0 | GOOD | DOUBLE STEM | CROWDING BY ADJACENT TREE, EPICORMIC GROWTH THROUGHOUT | | REMOVE | 1 |
| 4 | NATURALIZED THicket | WHIP-14 | | POOR-GOOD | VARIABLE | DENSE, THicket DOMINATED BY HAWTHORN AND BUCKTHORN | | REMOVE | 4 |



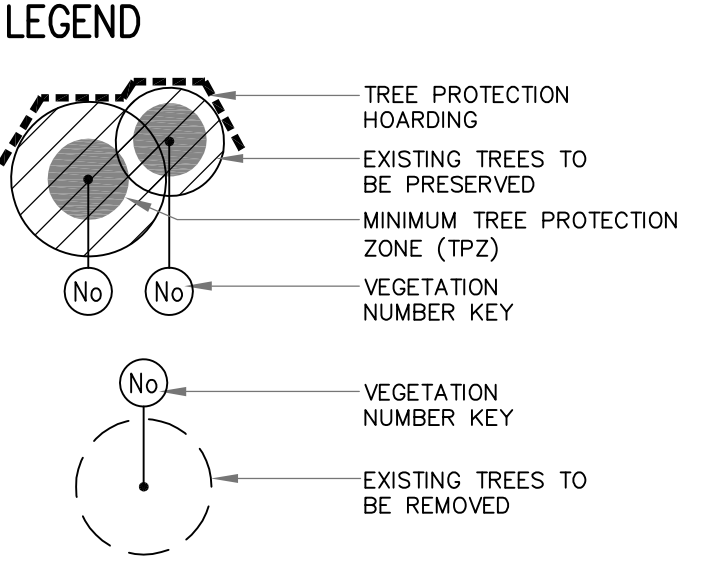
NOTES:
1. Hoarding details to be determined following initial site inspection.
2. Private tree hoarding to be approved by Development & Design.
3. City tree hoarding to be approved by Community Services Dept.
4. Hoarding must be supplied, installed and maintained by the applicant throughout all phases of construction.
Inspection must be conducted by the Development and Design Division prior to removing any private tree hoarding.
5. Do not allow vehicles to be parked or stored on or within hoarding.
6. T-bar supports are acceptable alternative to 4x4 posts. U-shaped metal supports will not be accepted.
7. Plywood must be allowed for solid hoarding. OSB/Chipboard will not be accepted for solid hoarding. Plywood sheets must be installed on 'construction' side of frame.
8. Applicant is responsible to ensure utility locates are completed within city boulevard prior to installing framed hoarding.

TREE PRESERVATION HOARDING
SHEET 1/10 (REV. JAN 2021)
MISSISSAUGA



GENERAL NOTES

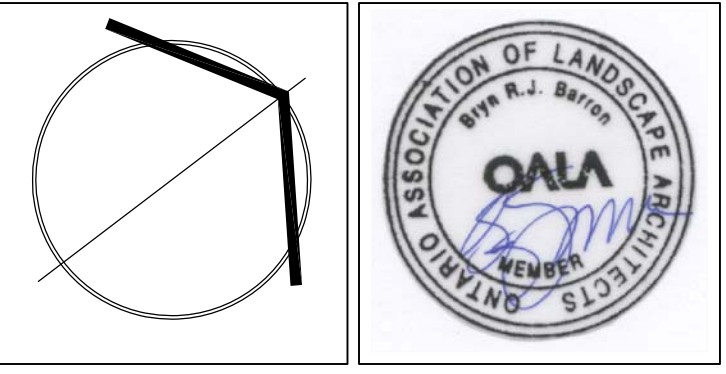
- VERIFY ALL DIMENSIONS.
- DO NOT SCALE DRAWINGS.
- REPORT ANY DISCREPANCIES, DISCOVERED ERRORS, OR OMISSIONS TO THE LANDSCAPE ARCHITECT BEFORE PROCEEDING.
- IT IS ADVISED THAT CONTRACTORS CONTACT THE LANDSCAPE ARCHITECT PRIOR TO CONSTRUCTION TO ENSURE THE USE OF THE LATEST REVISED DRAWINGS.
- DRAWINGS AND SPECIFICATIONS ARE THE PROPERTY OF THE LANDSCAPE ARCHITECT.



Matthew C. O'Brien
MATTHEW C. O'BRIEN
International Society of Arboriculture
Certified Arborist #0N-1144
Date: JULY 18, 2021

| No. | DATE | REVISION | BY |
|-----|---------------|----------------------------------|------|
| 9 | JUL 13, 2021 | ISSUED FOR DRAFT PLAN SUBMISSION | B.B. |
| 8 | MARCH 5, 2021 | ISSUED FOR SUBMISSION | B.B. |
| 7 | MARCH 2, 2021 | ISSUED FOR COORDINATION | B.B. |
| 6 | DEC 13, 2020 | AS PER LATEST SITE PLAN | B.B. |
| 5 | OCT 21, 2020 | ISSUED FOR SUBMISSION | B.B. |
| 4 | OCT 19, 2020 | ISSUED FOR COORDINATION | B.B. |
| 3 | OCT 07, 2020 | ISSUED FOR COORDINATION | B.B. |
| 2 | SEPT 15, 2020 | ISSUED FOR COORDINATION | B.B. |
| 1 | MAR. 20, 2020 | ISSUED FOR SUBMISSION | B.B. |

It is the responsibility of the Contractor and/or Owner to ensure that the drawings with the latest revisions are used for construction.



SBK 5770 HURONTARIO STREET, SUITE 320
MISSISSAUGA, ONTARIO, L5E 3S5
T: 416.695.4949 F: 905.712.3101
WWW.STRYBOS.COM

STRYBOS BARRON KING
LANDSCAPE ARCHITECTURE

PROJECT:
BRITANNIA ROAD
RESIDENTIAL DEVELOPMENT
CONDOMINIUM TOWNHOUSES
REGIONAL MUNICIPALITY OF PEEI
BRITANNIA ROAD, MISSISSAUGA

DRAWING TITLE:
**EXISTING TREE INVENTORY
AND PRESERVATION PLAN**

| | |
|------------------|---------------------|
| SCALE: 1:400 | PROJECT No. 20-5406 |
| DATE: MARCH 2021 | DRAWING No. V100 |
| DRAWN BY: SS | |
| CHECKED BY: BB | |

N.T.S.