

- LEGEND**
- LIMIT OF PROPERTY
 - EXISTING CONTOUR & ELEVATION
 - PROPOSED CATHBASIN
 - PROPOSED AREA DRAIN
 - PROPOSED ELEVATION
 - PROPOSED AREA DRAIN/CB ELEVATION
 - EXISTING ELEVATION
 - MAXIMUM 3:1 (UNLESS OTHERWISE NOTED)
 - PROPOSED OVERLAND FLOW ROUTE

BENCHMARK
ELEVATIONS ARE GEODETIC AND ARE REFERRED TO CITY OF MISSISSAUGA VERTICAL BENCH MARK NUMBER 1001 HAVING AN ORTHOMETRIC ELEVATION OF 123.221 METRES. ELEVATIONS ARE REFERENCED TO THE CANADIAN GEODETIC VERTICAL DATUM OF 1928, PRE-1978 ADJUSTMENT (CGVD: 1928; PRE-78ADJ.). TABLE SET HORIZONTALLY AT THE BASE OF A 750MM CONCRETE TRAFFIC POLE ON THE SOUTH SIDE OF HILLCREST AVENUE, WEST OF CENTERLINE OF THE EASTERLY GO STATION ENTRANCE.

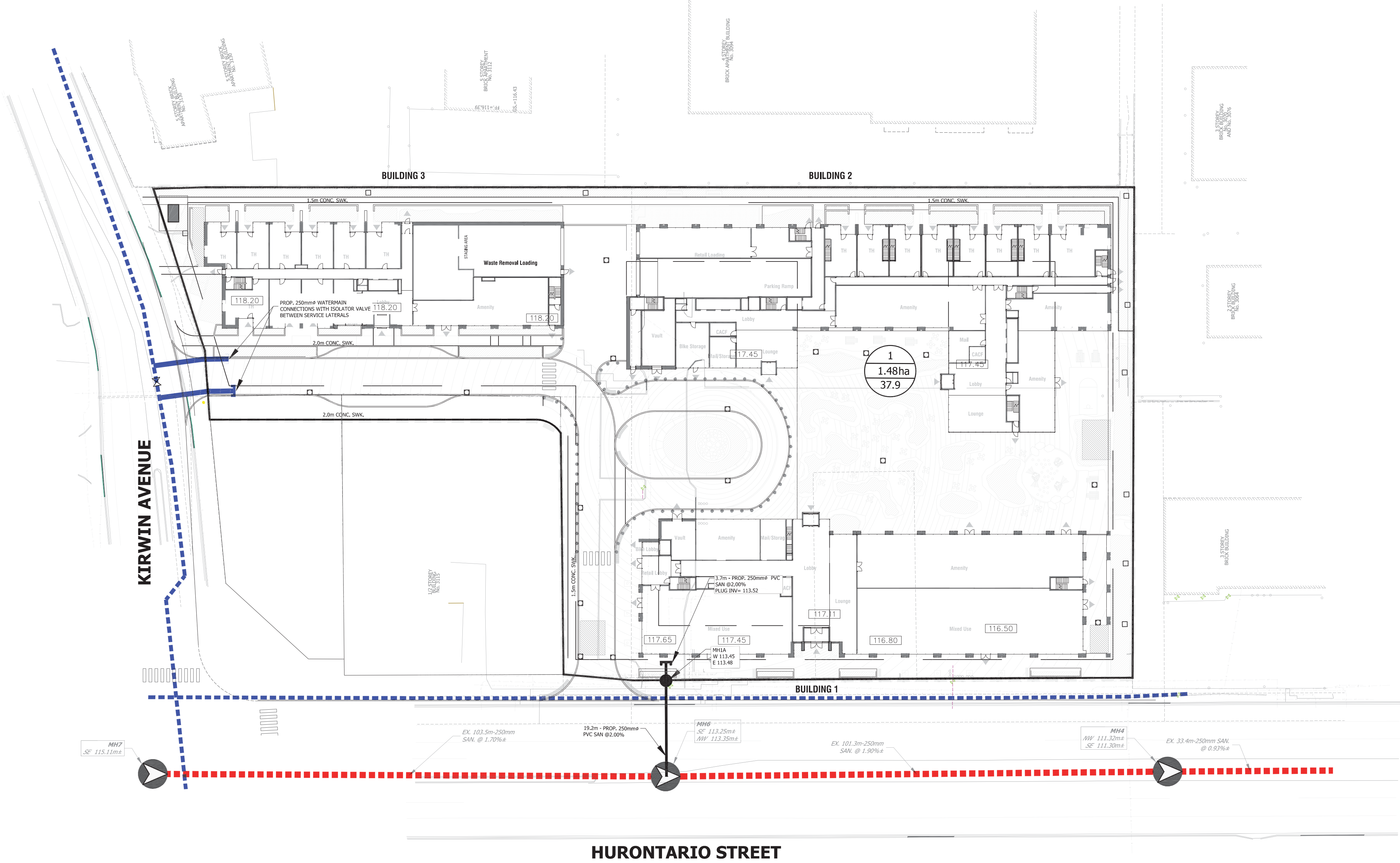
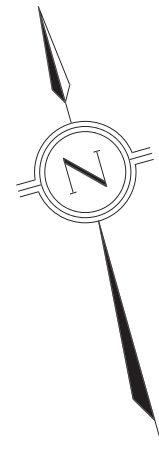
Urbantech® Consulting
A Division of Leighton-Zec West Ltd.
2030 Bristol Circle, Suite 105
Oakville, ON, L6H 0H2
TEL 905.829.8818 • urbantech.com

3085 HURONTARIO STREET
CITY OF MISSISSAUGA

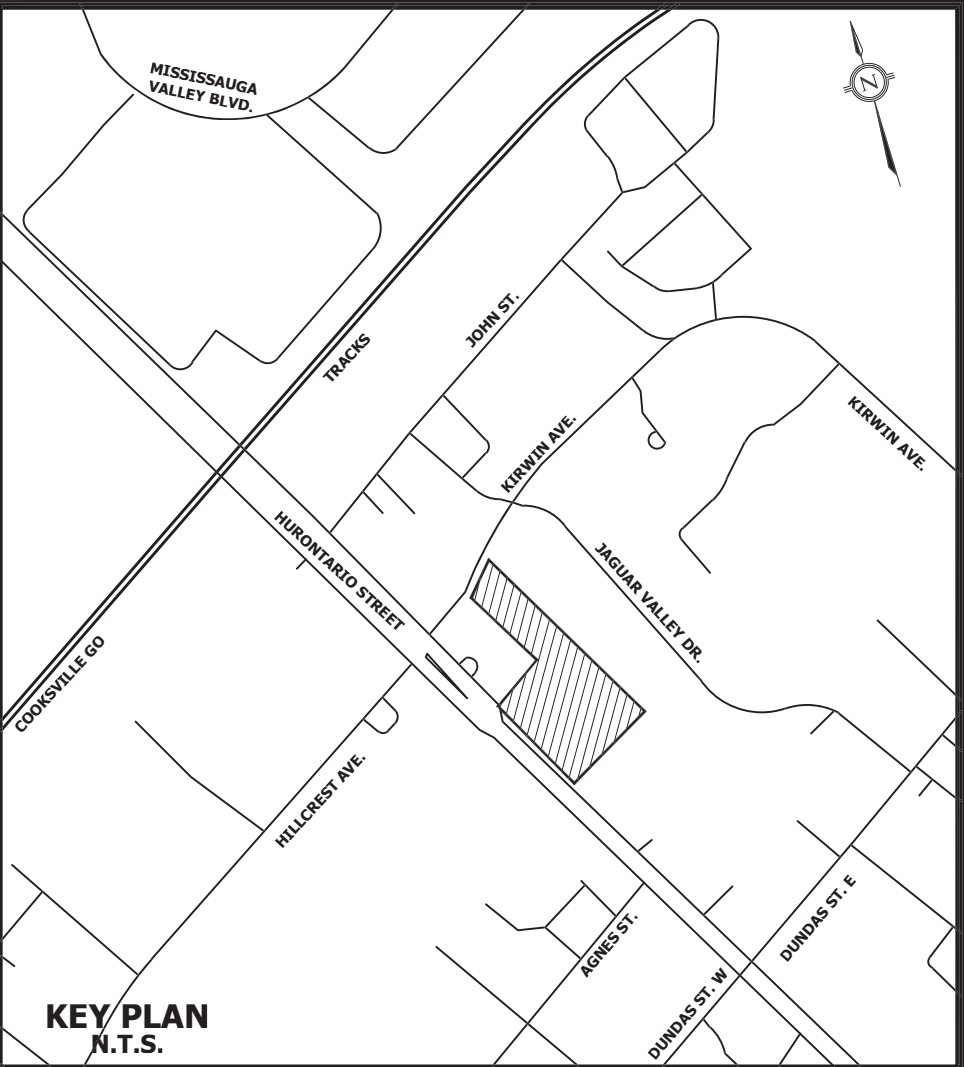
PRELIMINARY
GRADING PLAN

PROJECT No.	DATE	SCALE	DWG No.
20-653	JULY 2021	1:300	GR-1

T:\PROJECTS\20-653 (206) - HURONTARIO - MISSISSAUGA-COONSVILLE\DRAWINGS\200 - GRADING\20-653 - GR1 PRE GRADING PLAN.DWG



116m OF EX. 300mm SANITARY SEWER ALONG HURONTARIO NORTH OF DUNDAS AND 15m OF EX. 375mm SANITARY SEWER ON JAGUAR VALLEY AT DUNDAS STREET WILL REQUIRE UPSIZING TO ACCOMMODATE THIS DEVELOPMENT. EXACT EXTENT OF REQUIRED WORKS SHALL BE COORDINATED WITH THE REGION.



LEGEND

- LIMIT OF PROPERTY
- SANITARY DRAINAGE AREA BOUNDARY
- EXTERNAL SANITARY DRAINAGE
- PROPOSED SANITARY SEWER
- EXISTING SANITARY SEWER
- AREA I.D.
- AREA Ha.
- TOTAL FLOW RATE (l/s)
- SANITARY MANHOLE ID
- PROPOSED GROUND ELEVATION
PROPOSED SEWER INVERTS
- PROPOSED PVC. WATERMAIN
- EXISTING WATERMAIN

BENCHMARK

ELEVATIONS ARE GEODETIC AND ARE REFERRED TO CITY OF MISSISSAUGA VERTICAL BENCH MARK NUMBER 1001 HAVING AN ORTHOMETRIC ELEVATION OF 123.221 METRES. ELEVATIONS ARE REFERENCED TO THE CANADIAN GEODETIC VERTICAL DATUM OF 1928, PRE-1978 ADJUSTMENT (CGVD: 1928: PRE-78ADJ.).
TABLET SET HORIZONTALLY AT THE BASE OF A 750MM CONCRETE TRAFFIC POLE ON THE SOUTH SIDE OF HILLCREST AVENUE, WEST OF CENTERLINE OF THE EASTERLY GO STATION ENTRANCE.

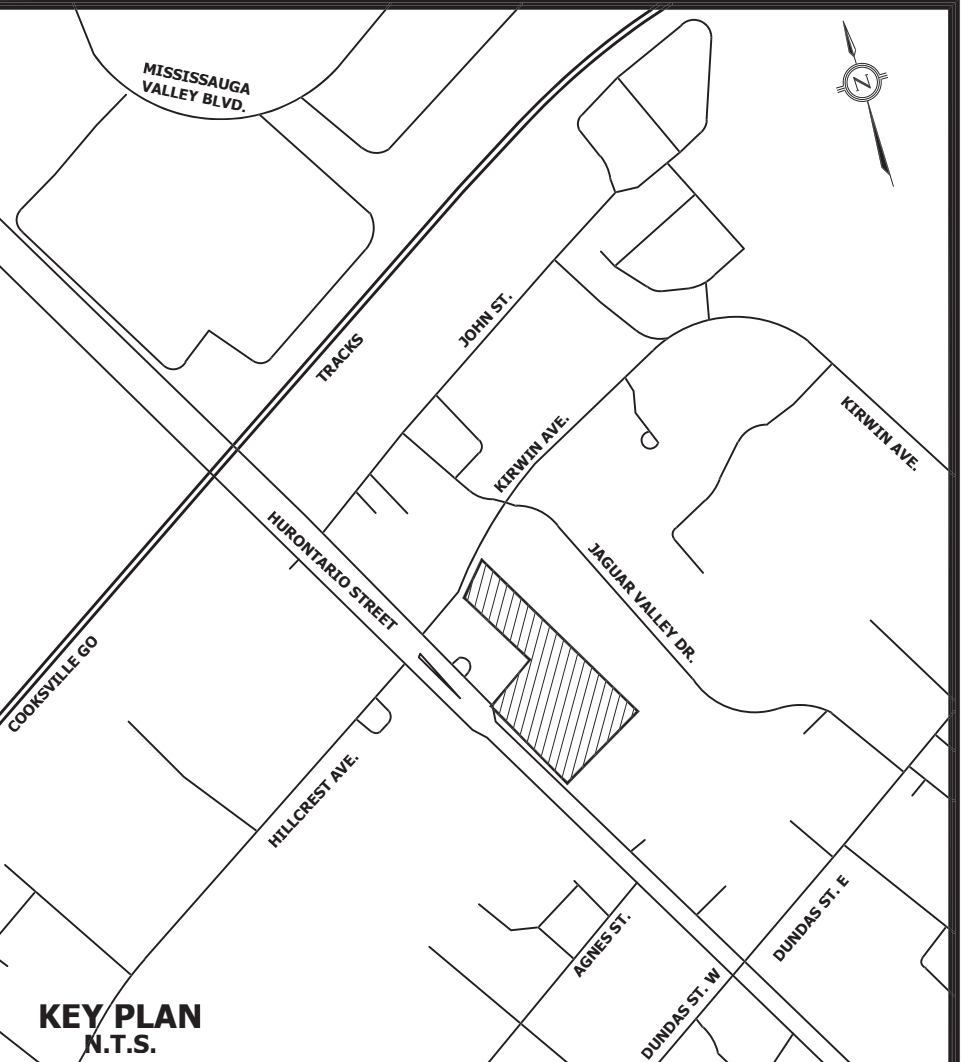
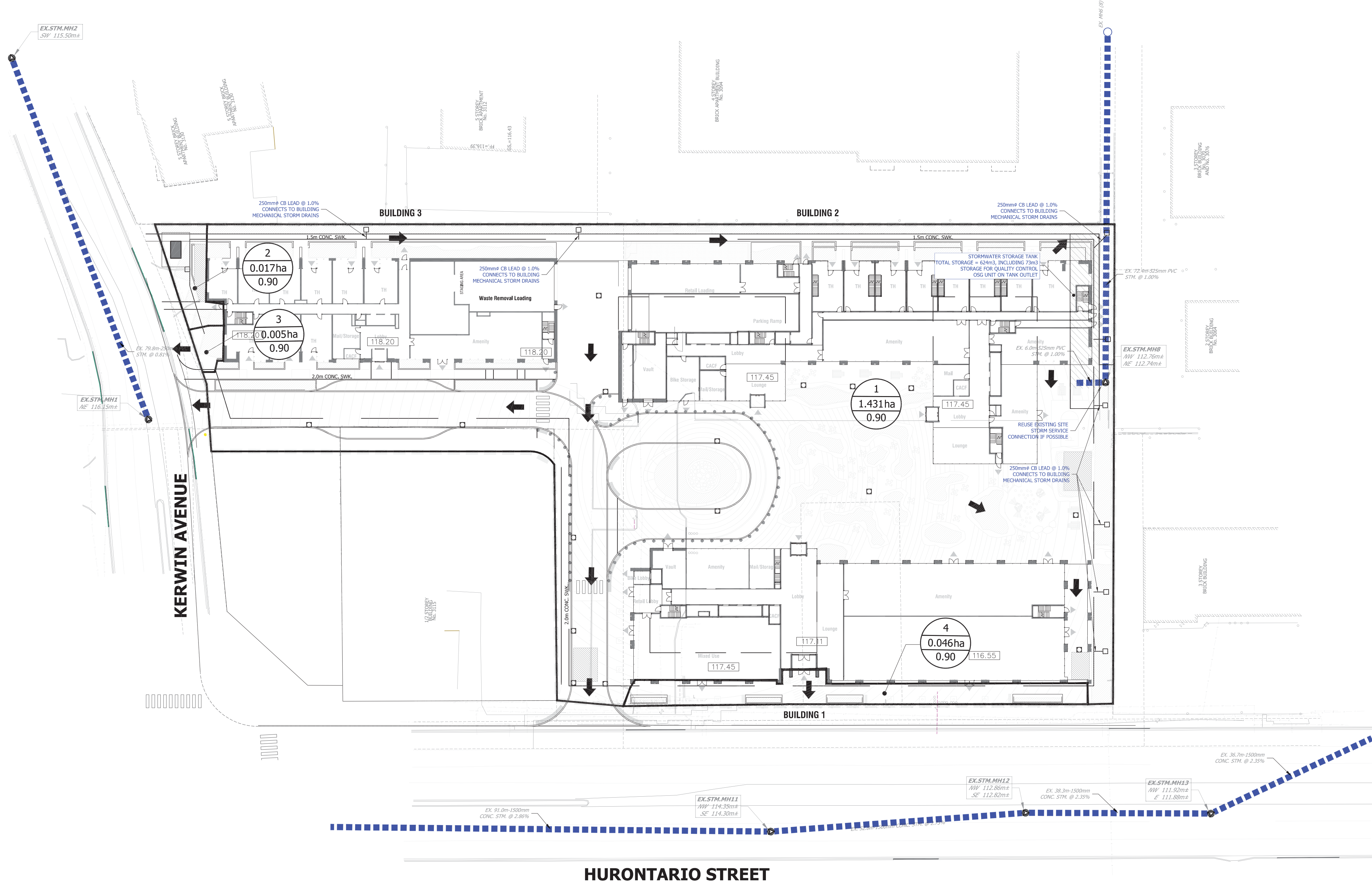
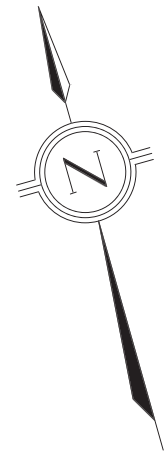
URBANTECH®
URBANTECH® Consulting
A Division of Leighton-Zec West Ltd.
2030 Bristol Circle, Suite 105
Oakville, ON, L6H 0H2
TEL 905.829.8818 • urbantech.com

3085 HURONTARIO STREET
CITY OF MISSISSAUGA

PRELIMINARY SANITARY & WATERMAIN INFRASTRUCTURE

PROJECT No.	DATE	SCALE	DWG No.
20-653	JULY 2021	1:300	SERV-1

F:\PROJECTS\20-653 (3085 HURONTARIO - MISSISSAUGA - COOKVILLE)\DRAWINGS\300 - DRAINAGE\20-653-SERV.DWG



LEGEND

LIMIT OF PROPERTY

STORM DRAINAGE AREA BOUNDARY

PROPOSED STORM SEWER

EXISTING STORM SEWER

AREA I.D.

AREA Ha.

RUNOFF COEFFICIENT

STORM MANHOLE ID

PROPOSED GROUND ELEVATION

PROPOSED SEWER INVERTS

PROPOSED OVERLAND FLOW ROUTE

BENCHMARK
ELEVATIONS ARE GEODETIC AND ARE REFERRED TO CITY OF MISSISSAUGA VERTICAL BENCH MARK NUMBER 1001 HAVING AN ORTHOMETRIC ELEVATION OF 123.221 METRES. ELEVATIONS ARE REFERENCED TO THE CANADIAN GEODETIC VERTICAL DATUM OF 1928, PRE-1978 ADJUSTMENT (CGVD: 1928: PRE-78ADJ.).
TABLET SET HORIZONTALLY AT THE BASE OF A 750MM CONCRETE TRAFFIC POLE ON THE SOUTH SIDE OF HURONTARIO AVENUE, WEST OF CENTERLINE OF THE EASTERLY GO STATION ENTRANCE.

Urbantech® Consulting

A Division of Leighton-Zec West Ltd.

2030 Bristol Circle, Suite 105

Oakville, ON, L6H 0H2

TEL 905.829.8818 • urbantech.com

3085 HURONTARIO STREET

CITY OF MISSISSAUGA

PRELIMINARY STORM

INFRASTRUCTURE

PROJECT No.	DATE	SCALE	DWG No.
20-653	JULY 2021	1:500	STM-1

F:\PROJECTS\20-653\3085_HURONTARIO_MISSISSAUGA\CONVENT\DRAWINGS\30-DRAINAGE\20-653-STM.DWG

