

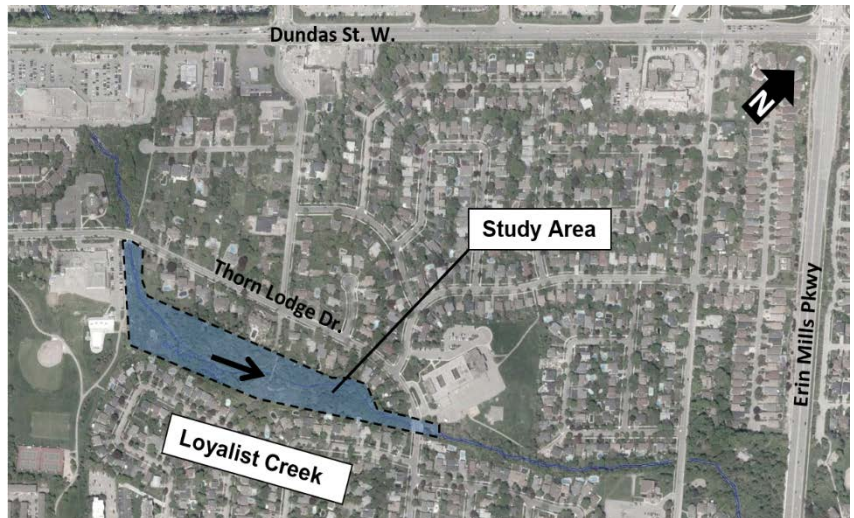
NOTICE OF STUDY COMPLETION

Municipal Class Environmental Assessment (EA) Study: Loyalist Creek Erosion Control Project behind Thorn Lodge Drive

PROJECT BACKGROUND

The City of Mississauga has completed a Municipal Class Environmental Assessment (Class EA) Study for erosion control and restoration of Loyalist Creek behind Thorn Lodge Drive.

The Study was undertaken to address existing erosion and safety issues along the creek. Some of the existing creek banks are lined with stone-filled gabion baskets that are approaching the end of their lifespan and have begun to collapse. Other creek banks are lined with large armourstone blocks, some of which have become dislodged. Upstream stone material is also accumulating at the base of the study area, restricting flow conveyance.



STUDY COMPLETION

Based on the Study findings and feedback received, a reach-based solution was selected as the preferred approach to provide long-term erosion control while managing the extent of environmental impacts. Local restoration works are recommended within the upstream and downstream reaches of the study area (Reaches 1 and 3), and engineered channel restoration is recommended in the mid-to-lower reach (Reach 2)

A Project File Report has been prepared to document the planning and decision-making process for this study. By this Notice, the Project File is being made available for review over an extended timeframe of 45 days, from October 26, 2021 to December 10, 2021 on the City's project website:

<https://www.mississauga.ca/projects-and-strategies/environmental-assessments/loyalist-creek-erosion-control-project-behind-thorn-lodge-drive/>

Should a member of the public request a hard copy of the Project File, the City will assess how this might be delivered in a manner that is consistent with regional and provincial guidelines supporting physical distancing during the current pandemic.

PROVIDING COMMENTS

If you have any questions, comments or concerns, please contact the project team by December 10, 2021:

Greg Frew, P.Eng.
Project Manager
City of Mississauga
201 City Centre Dr, Suite 800
Mississauga, Ontario L5B 2T4
(905) 615-3200, ext. 3362
Greg.Frew@mississauga.ca

Robert Amos, P.Eng.
Consultant Project Manager
Aquafor Beech Ltd.
2600 Skymark Avenue, Unit 6-201
Mississauga, Ontario, L4W 5B2
(905) 629-0099, ext. 294
amos.r@aquaforbbeech.com

In addition, a request may be made to the Ministry of the Environment, Conservation and Parks for an Order requiring a higher level of study on the grounds that the requested Order may prevent, mitigate, or remedy adverse impacts on constitutionally protected Aboriginal and treaty rights. This request should be sent in writing or email by December 10, 2021 to the addresses listed below:

Minister of Environment, Conservation and Parks
Ministry of Environment, Conservation and Parks
777 Bay Street, 5th Floor
Toronto ON M7A 2J3
minister.mecp@ontario.ca

Director, Environmental Assessment Branch
Ministry of Environment, Conservation and Parks
135 St. Clair Ave. W, 1st Floor
Toronto ON, M4V 1P5
EABDirector@ontario.ca

A copy of the Order request should also be sent to the City of Mississauga project manager.

This Study was conducted in accordance with the planning process for Schedule "B" projects as outlined in the *Municipal Engineers Association Municipal Class Environmental Assessment* (October 2000, as amended in 2007, 2011, and 2015), which is approved under the *Ontario Environmental Assessment Act*. Personal information submitted is collected under the authority of the Environmental Assessment Act and will become part of the record that is available to the general public.

This Notice issued on **October 26, 2021**.