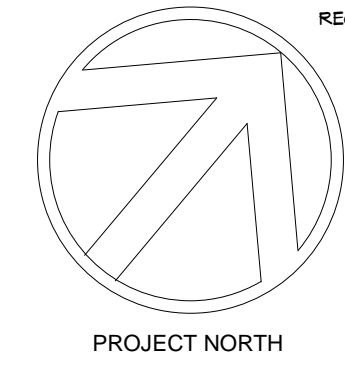
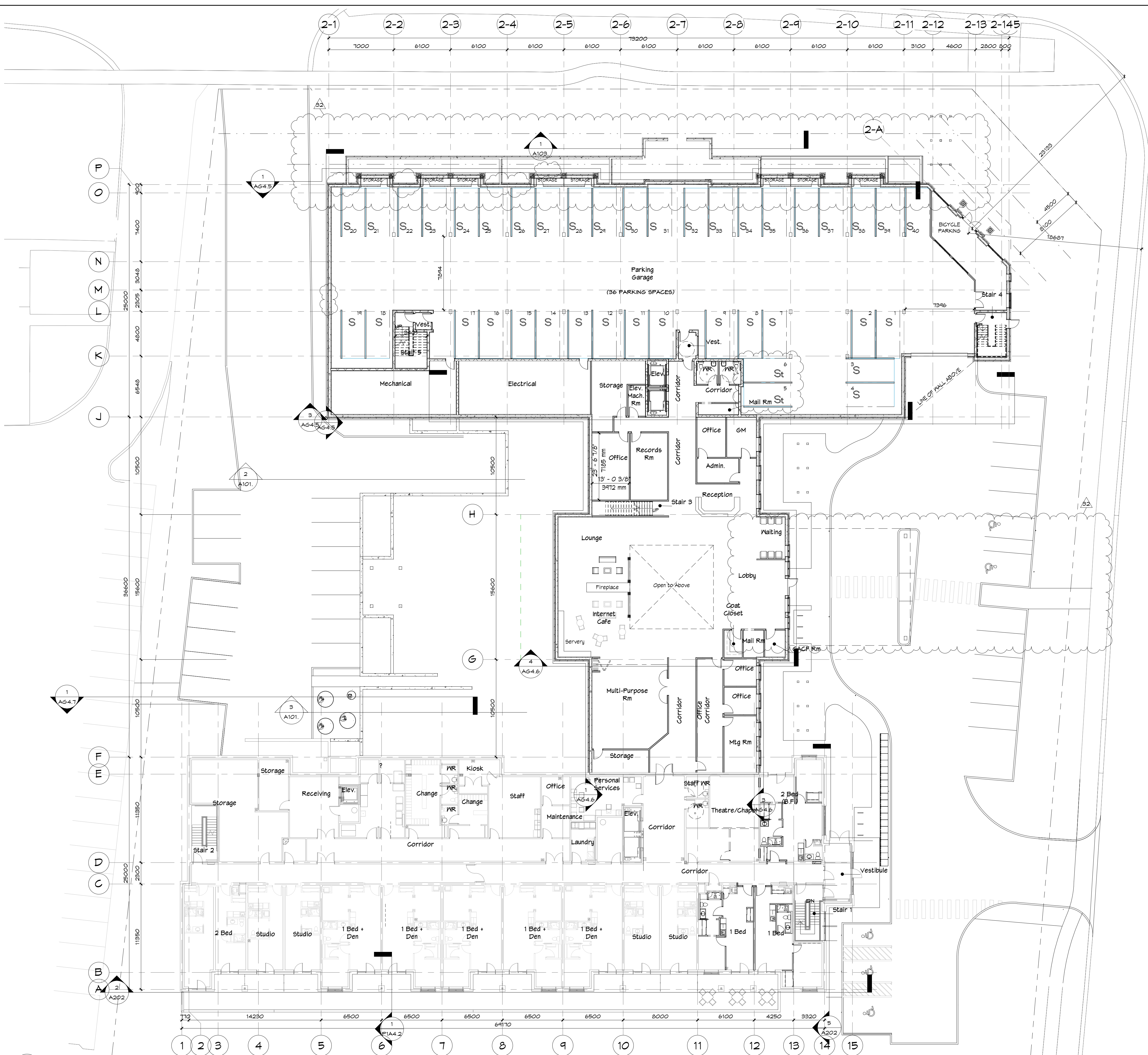


2020-11-16 10:48:46 AM

1 Ground Floor Plan
A400 1:200



REGISTERED PLAN: CON 1 SDS FT LOT 31
 FN: 13425-0182
Sifton
 SIFTON PROPERTIES LIMITED
 129 RIVERBEND ROAD, SUITE 300
 LONDON, ON N6K 0S2
 T: 514-434-1000
 F: 514-434-1004

Eriview Redevelopment - Retirement Residence SP19-108
 2132 Dundas St. W., Mississauga, ON
 2630 Fifth Line West, Mississauga, ON

Fryett Turner
 ARCHITECTS INC

THE CONTRACTOR SHALL VERIFY ALL DIMENSIONS IN THIS DRAWING. THE CONTRACTOR SHALL BE RESPONSIBLE FOR THE COMPLETION OF THE WORK UNDER NO CIRCUMSTANCES SHALL THE CONTRACTOR PROCEED IN UNCERTAINTY.
 ALL DIMENSIONS AND SPECIFICATIONS PREPARED BY THE ARCHITECT SHALL BE SHOWN IN METRIC UNITS AND SHALL BE USED AS SHOWN. DIMENSIONS AND AREAS ARE TO BE RETURNED AT HIS REQUEST. DO NOT SCALE DRAWINGS.
 © COPYRIGHT
 115 Metcalfe Street, Suite 500, Toronto, Ontario M5H 1B7
 www.fryettturner.ca

SEAL

STATUS	CONSET.	20201111
PROJECT #	15055	20200924
DZ FILE NO.	02.17/01.P2	20190804
DRAWN	JEF. SV	20180706
SCALE	1:200	20161025
DATE DWN	20150830	
ISSUED	20200806	

32 SPA RESUBMITTAL COMMENTS	20201111
30 SPA COMMENT REVISIONS	20200924
25 OPA/ZBA/SPA RESUBMISSION	20190804
14 RE-ISSUED FOR OPA/ZBA	20180706
1 ISSUED FOR URBAN DESIGN BRIEF	20161025

REVISIONS DATE

A400.