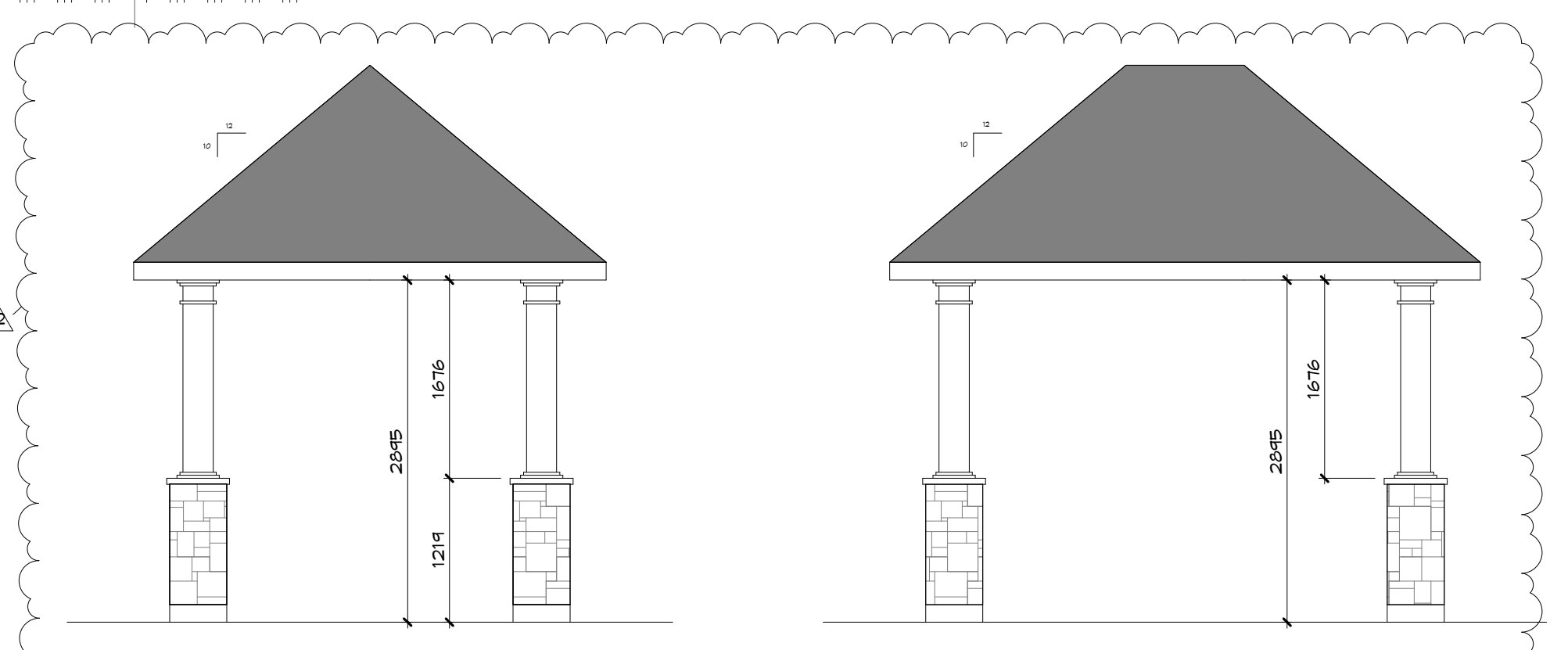
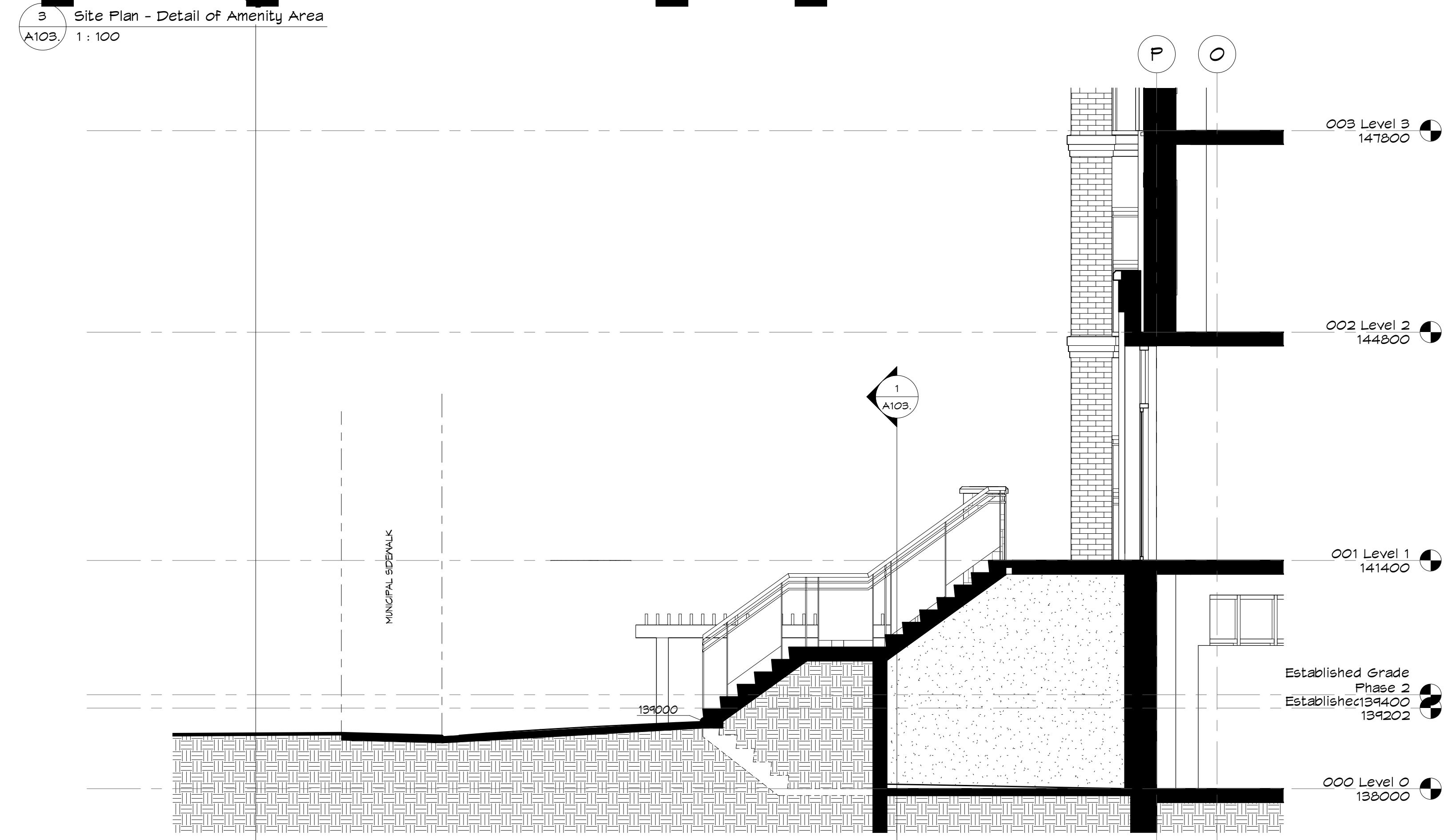
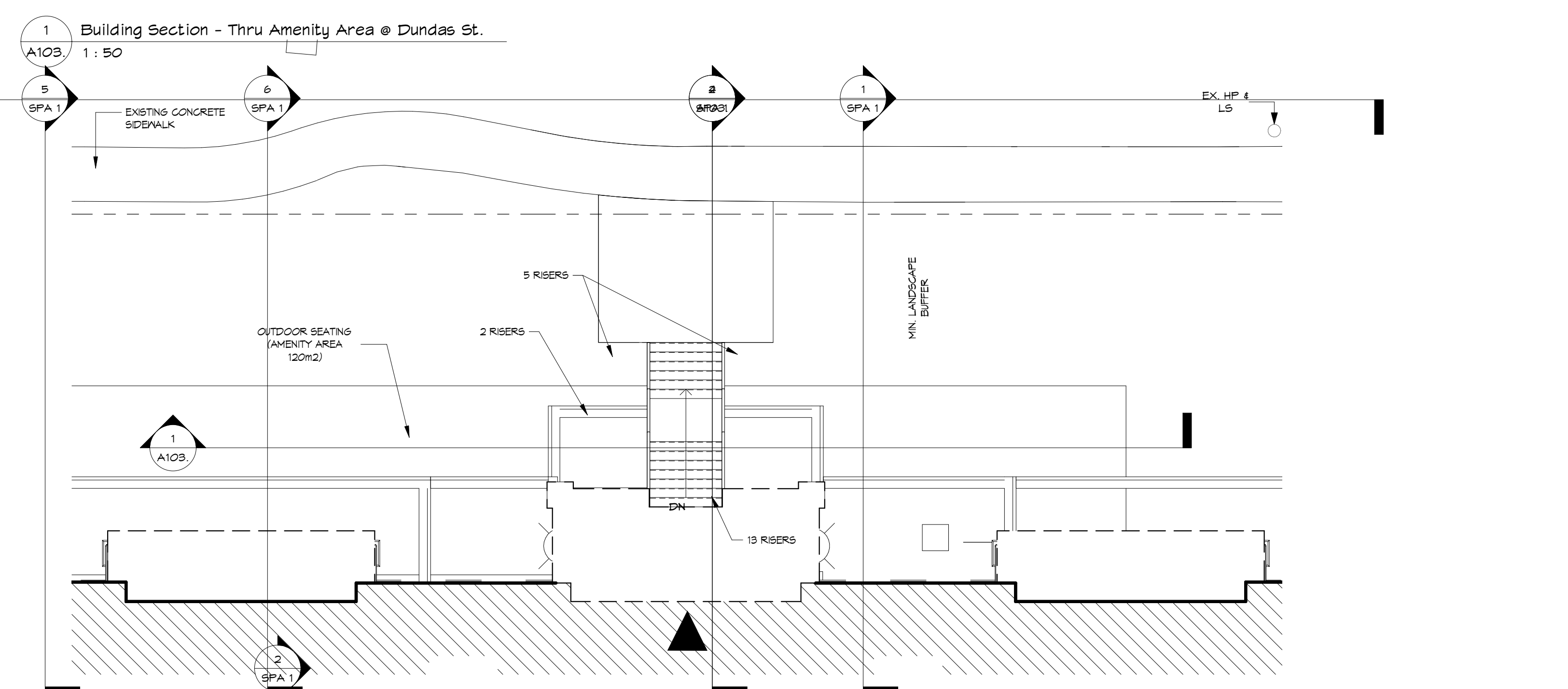
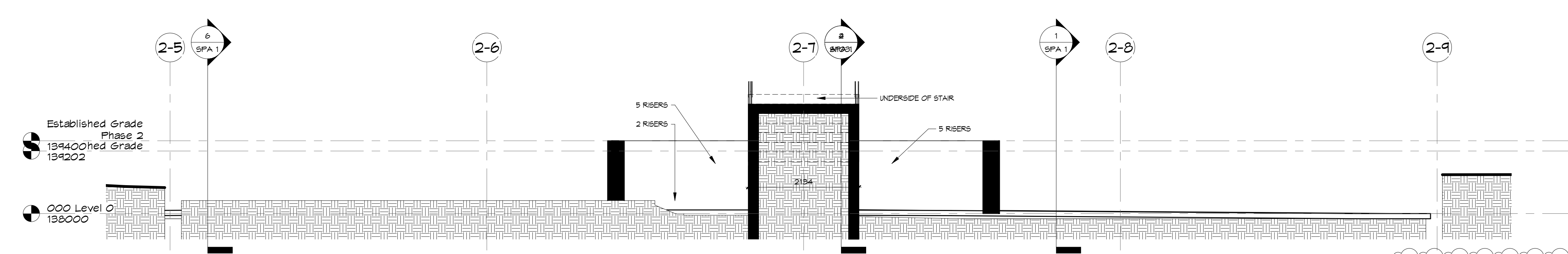
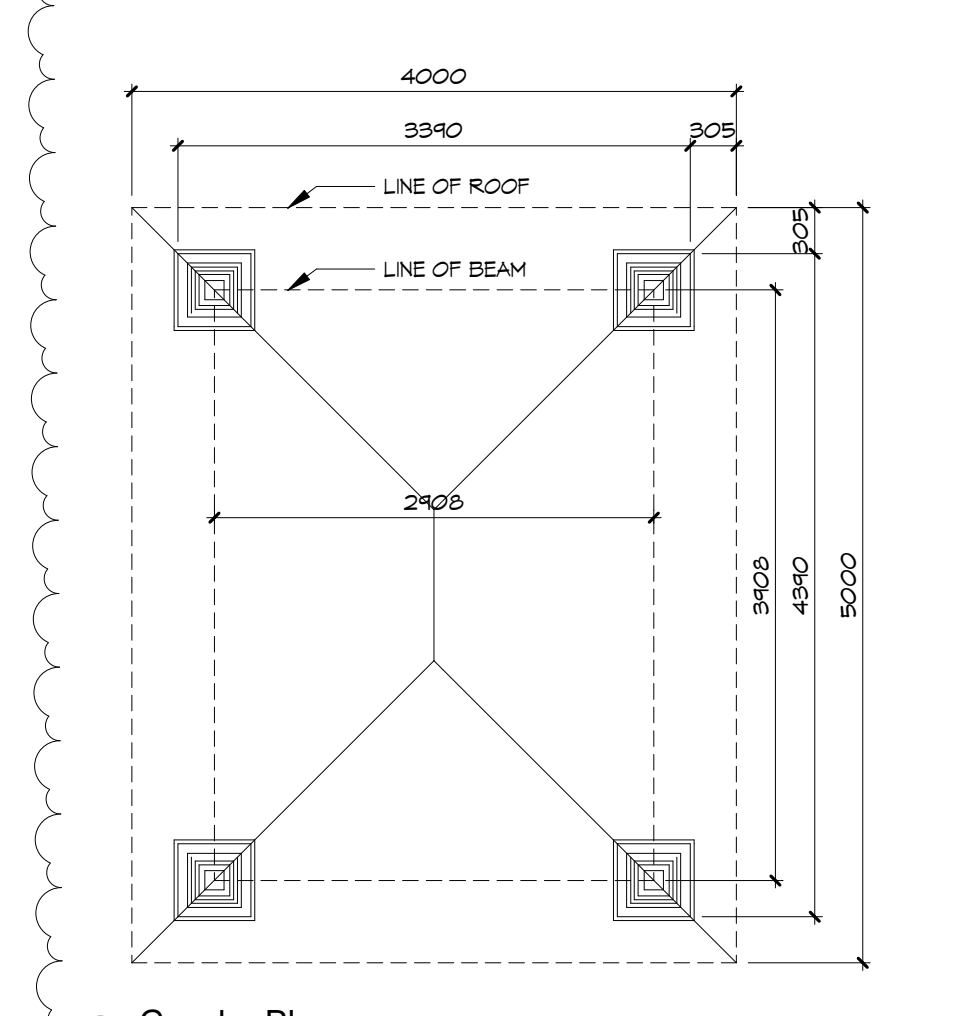


PROJECT NORTH

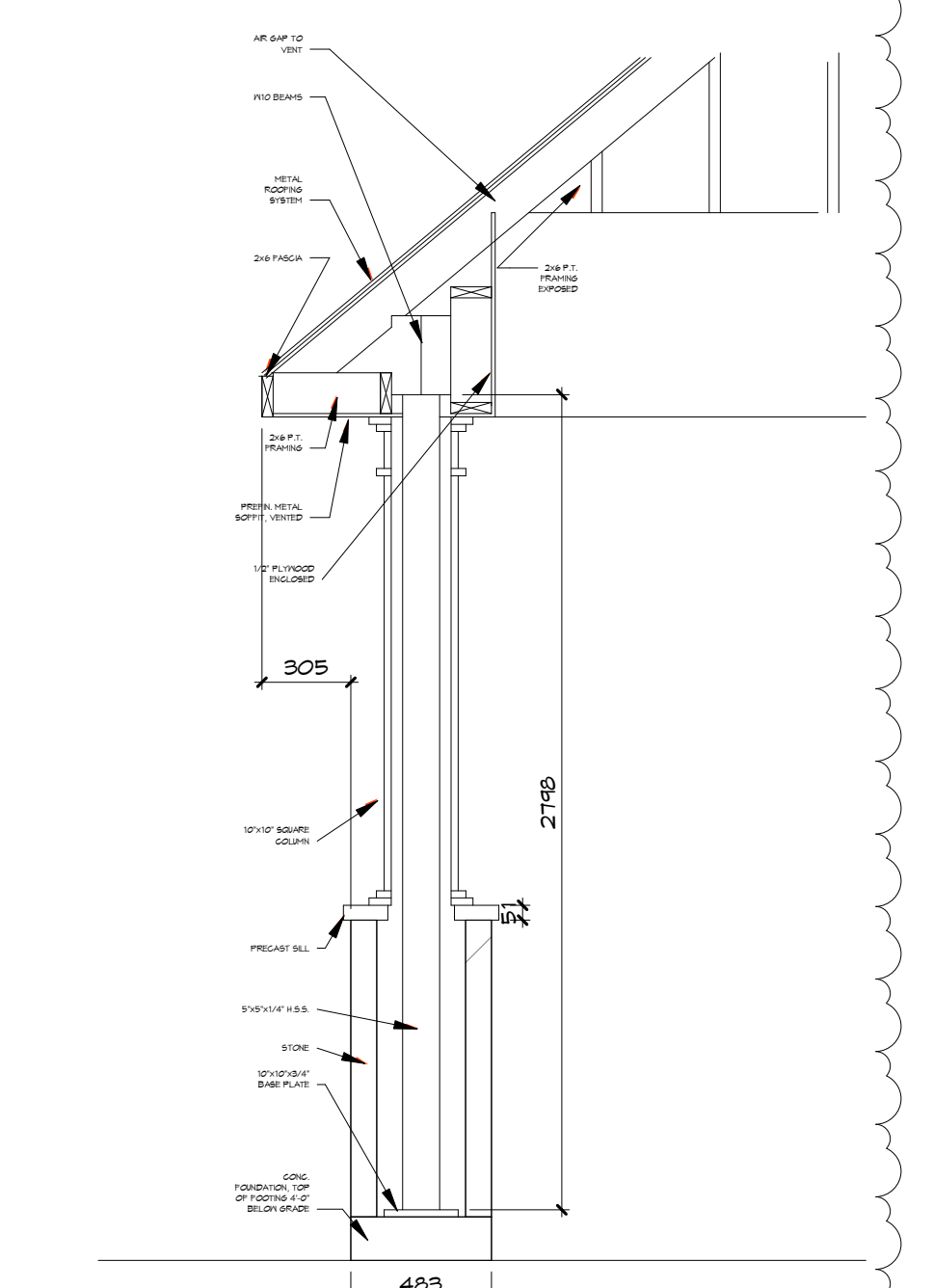
115 Metcalfe Street  
Toronto, ON M5S 1A7  
Telephone: (416) 596-2201  
Fax: (416) 596-0343  
www.fryettturner.ca



4 Gazebo Elevations  
1:50



6 Gazebo Plan  
1:50



5 Gazebo Details  
1:25

**THE CORPORATION OF THE CITY OF MISSISSAUGA**  
**ACCESSIBLE PARKING SIGN REQUIREMENTS**  
**ACCESSIBLE PARKING BY-LAW # 10-2016**

Accessible Parking Signs shall be mounted on a level wall surface or mounted on a permanent post, pillar, or other suitable surface, conforming to the requirements or regulations made under the Highway Traffic Act and the Accessibility for Ontarians with Disabilities Act, and be located:

- At a height of 1200 mm (47 in.) from the ground/floor surface to the bottom edge of the sign.
- If mounted on a post, the post shall be colour contrasted with the background environment.
- For perpendicular parking centred on the parking space, and
- For parallel parking located toward the end of the parking space, on the opposite side from the access side.

Each Type 'A' Parking Space shall have two (2) 150 mm x 300 mm (6 inches x 11 1/4 inches) signs, on the same sign post/wall mount and located immediately below the sign described in sections 9 and 11, with the words "Van Accessible" followed underneath with "Maximum Fine \$5,000.00", as illustrated in Schedule "C" of Accessible Parking By-law 10-2016.

Each Type 'B' Parking Space shall have a 150 mm x 300 mm (6 inches x 11 1/4 inches) sign, on the same sign post/wall mount and located immediately below the sign described in sections 9 and 11, with the words "Maximum Fine \$5,000.00", as illustrated in Schedule "C" of Accessible Parking By-law 10-2016.

Sign Face:

- 0.954 mm gauge aluminum sign blank
- white background
- holes-meter punched

Mounting:

Secure the sign face to a post or wall with two galvanized 12 mm hex. head bolts and nuts with flat washers on both sides.

Sign Face:

- Black colour font (min. size 25 mm) - White Reflective Background
- White Reflective Symbol and Border
- Blue Background
- Red for Reference Only

Sign Dimensions:

- Maximum Fine \$5000.00
- Van Accessible
- 300 mm (11-3/4 in.)
- 150 mm (6 in.)
- 150 mm (6 in.)
- 300 mm (11-3/4 in.)

Sign Face: 300 mm min. x 450 mm min.  
Post: 100 mm X 100 mm Pressure Treated Wood or 75 mm Galvanized Standard Steel Pipe To be Cast in Place in 300 mm Diameter Concrete Footing.

Sign Face:

- Black Letter "P" and Border
- 20 mm Red Reflective Circular Background
- 15 mm Red Reflective Stroke
- White Reflective Symbol and Border
- White Reflective Symbol and Border
- Blue Reflective Background and Border
- Black Legend

Sign Face:

- White Symbol and Border
- Blue Background
- Red for Reference Only

Pavement Marking: International Symbol of Access - One in Each Accessible Parking Space. 76.25 mm x 76.25 mm.

MISSISSAUGA

Erinview Redevelopment - Retirement Residence SP19-108  
2132 Dundas St. W., Mississauga ON  
2630 Fifth Line West, Mississauga, ON

Site Details  
STATUS: CONST.  
PROJECT #: 15055  
SP FILE NO.: SP 17/010/02  
DRAWN: AUTHOR  
SCALE: As Indicated  
DATE DWN: 04/04/19  
ISSUED: 20200806

2020-11-16 10:47:19 AM  
32 SPA RESUBMITTAL COMMENTS 20201111  
25 OPA/ZBA/SPA RESUBMISSION 20190809  
REVISIONS DATE

A103.