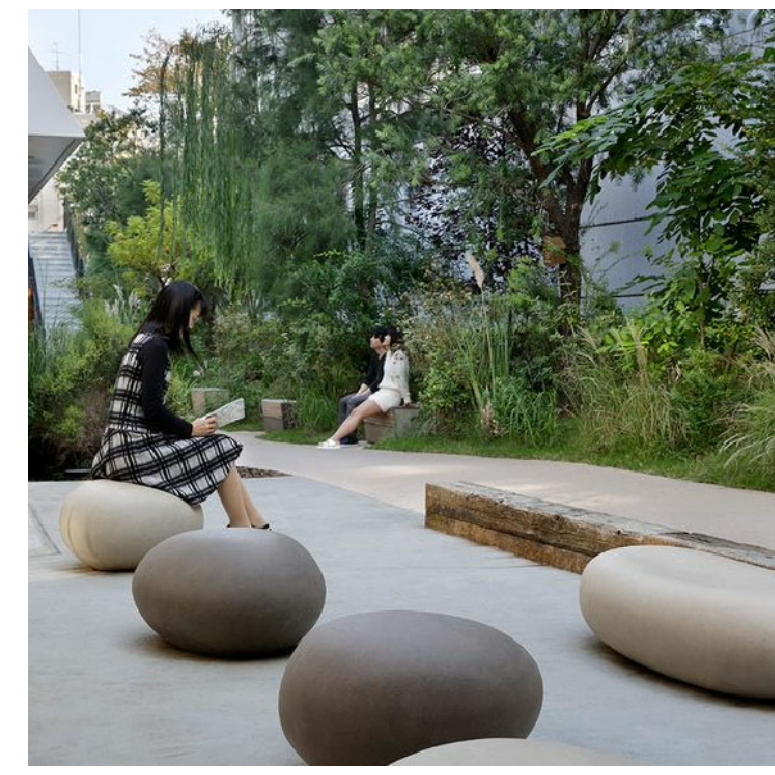




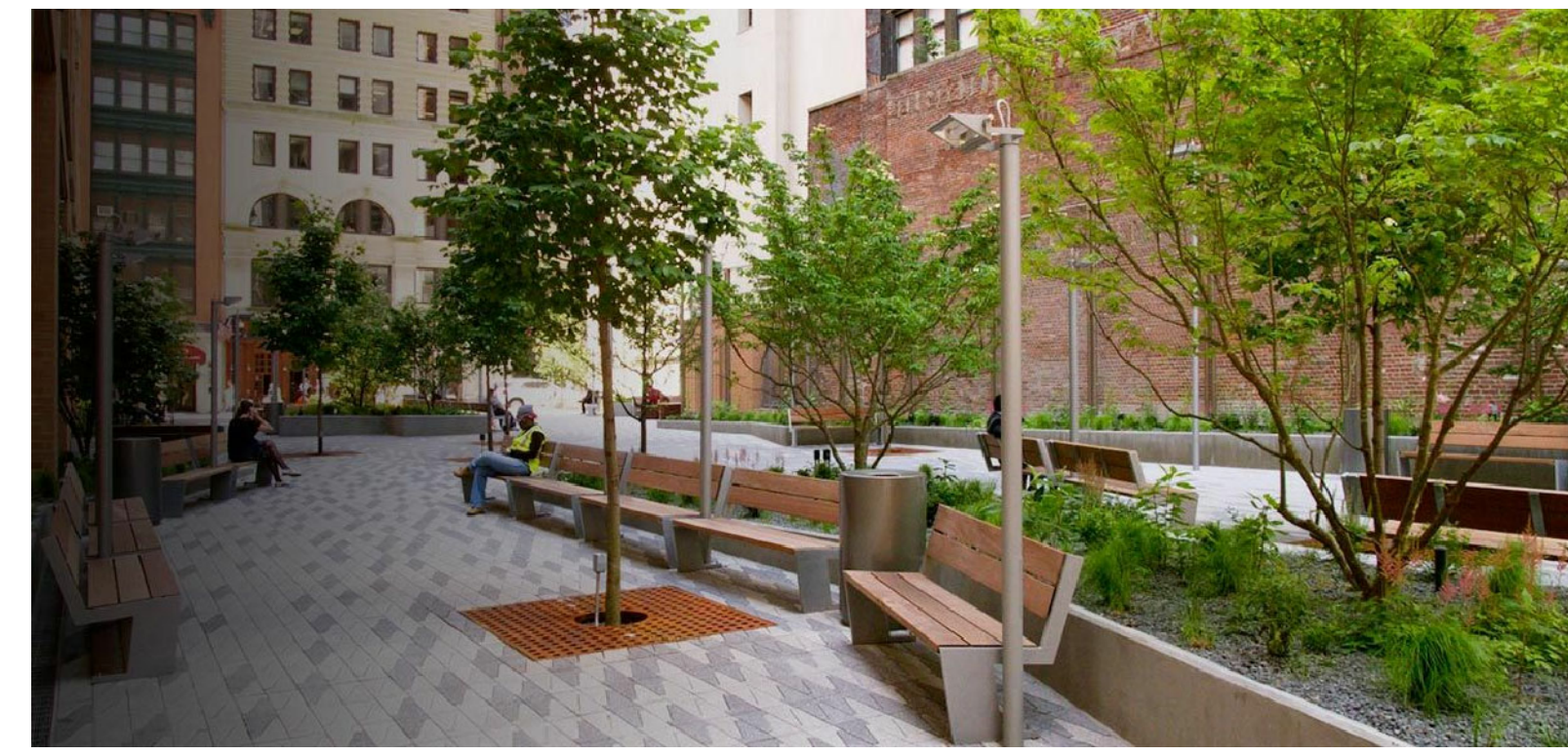
POTENTIAL 'POPS' AREA- PEDESTRIAN PLAZA



POTENTIAL 'POPS' AREA- SEATING/SCULPTURAL ELEMENTS



POTENTIAL 'POPS' AREA- SCULPTURAL PLAY ELEMENTS



POTENTIAL 'POPS' AREA- SEATING AREA



POTENTIAL 'POPS' AREA- NIGHT TIME



ENHANCED PEDESTRIAN CROSSINGS



LAKESHORE ROAD EAST STREETScape- LANDSCAPE CORRIDOR



PRIVATE AMENITY SPACE



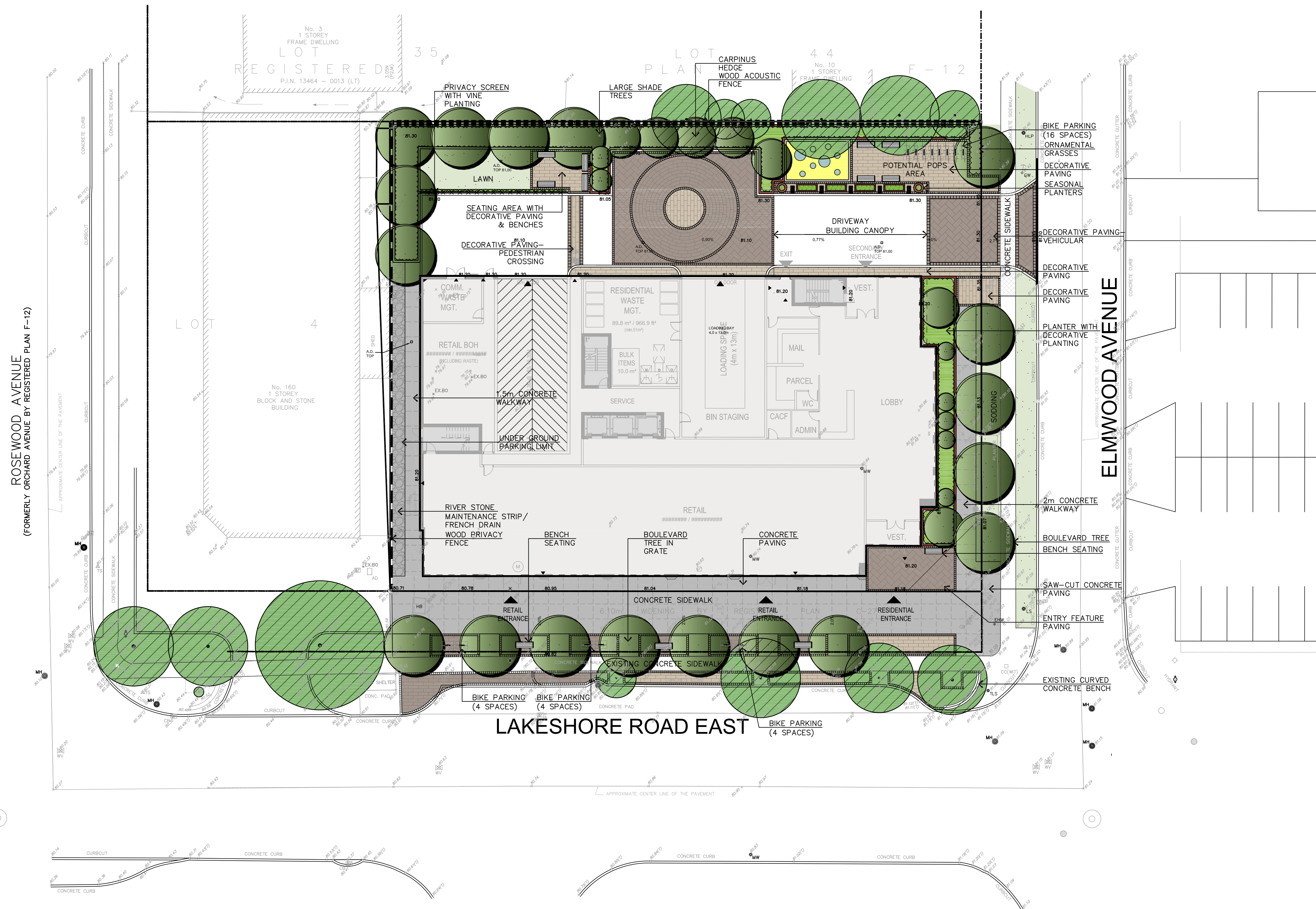
STREETScape

GENERAL NOTES

- VERIFY ALL DIMENSIONS.
- DO NOT SCALE DRAWINGS.
- REPORT ANY DISCREPANCIES, DISCOVERED ERRORS, OR OMISSIONS TO THE LANDSCAPE ARCHITECT BEFORE PROCEEDING.
- IT IS ADVISED THAT CONTRACTORS CONTACT THE LANDSCAPE ARCHITECT PRIOR TO CONSTRUCTION TO ENSURE THE USE OF THE LATEST REVISED DRAWINGS.
- DRAWINGS AND SPECIFICATIONS ARE THE PROPERTY OF THE LANDSCAPE ARCHITECT.

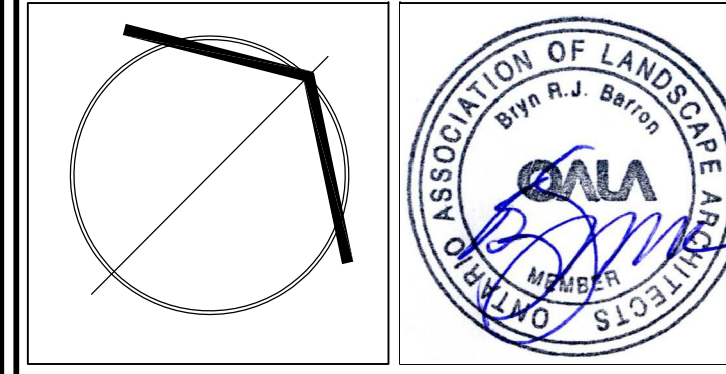
LEGEND

- EXISTING TREES TO REMAIN
- PROPOSED DECIDUOUS TREE
- PROPOSED MULTI-STEMMED SHRUB
- DECIDUOUS SHRUBS
- SODDING
- DECORATIVE UNIT PAVING (PEDESTRIAN)
- DECORATIVE UNIT PAVING (VEHICULAR)
- CONCRETE SIDEWALK
- PLAY AREA
- PROPOSED WOOD PRIVACY FENCE
- PROPOSED WOOD ACOUSTIC FENCE
- PRIVACY SCREEN
- BENCH
- BIKE RING



No.	DATE	REVISION	BY
6	OCT. 18, 2021	ISSUED FOR ZONING	B.B.
5	SEPT. 21, 2021	ISSUED FOR COORDINATION	B.B.
4	AUG. 16, 2021	ISSUED FOR COORDINATION	B.B.
3	JULY 23, 2021	ISSUED FOR COORDINATION	B.B.
2	JULY 19, 2021	ISSUED FOR COORDINATION	B.B.
1	JUNE 24, 2021	ISSUED FOR REZONING	B.B.

It is the responsibility of the Contractor and/or Owner to ensure that the drawings with the latest revisions are used for construction.



SBK
STRYBOS BARRON KING
LANDSCAPE ARCHITECTURE

PROJECT:
PROPOSED MIXED-USE DEVELOPMENT
170 LAKE SHORE ROAD EAST
MISSISSAUGA, ONTARIO
LIGHTPOINT PROPERTIES INC.

DRAWING TITLE:
LANDSCAPE CONCEPT PLAN

SCALE: 1:200	PROJECT No. 21-5638
DATE: JUNE 2021	DRAWING No. L000
DRAWN BY: K.L.	
CHECKED BY: L.A.B.	