

- NOTES:**
- Hoarding details to be determined following initial site inspection.
 - Private tree hoarding to be approved by Development & Design; City tree hoarding to be approved by Community Services Dept.
 - Hoarding must be supplied, installed and maintained by the applicant throughout all phases of construction. Inspection must be conducted by the Development and Design Division prior to removing any/all private hoarding.
 - Do not allow water to collect and pond behind or within hoarding.
 - T-bar supports are acceptable alternative to 4x4 posts. U-shaped metal supports will not be accepted.
 - Plywood must be utilized for 'solid' hoarding. OSB/Chipboard will not be accepted for solid hoarding. Plywood sheets must be installed on 'construction' side of frame.
 - Applicant is responsible to ensure utility locates are completed within city boulevard prior to installing framed hoarding.

TREE PRESERVATION HOARDING
SCALE: N/TB/E: JUN 2017

SPECIFICATIONS FOR THE PROTECTION AND PRESERVATION OF EXISTING VEGETATION

a) ALL EXISTING TREES WHICH ARE TO REMAIN SHALL BE FULLY PROTECTED WITH HOARDINGS, I.E. SNOWFENCING, ERECTED BEYOND THEIR 'DRIP LINE' PRIOR TO THE ISSUANCE OF THE BUILDING PERMIT. TO THE SATISFACTION OF THE PLANNING AND DEVELOPMENT DEPARTMENT. GROUPS OF TREES AND OTHER EXISTING PLANTINGS TO BE PROTECTED, SHALL BE TREATED IN A LIKE MANNER WITH HOARDING AROUND THE ENTIRE CLUMPS. AREAS WITHIN THE PROTECTIVE FENCING SHALL REMAIN UNDISTURBED AND SHALL NOT BE USED FOR THE STORAGE OF BUILDING MATERIALS OR EQUIPMENT.

b) NO RIGGING CABLES SHALL BE WRAPPED AROUND OR INSTALLED IN TREES AND SURPLUS SOIL, EQUIPMENT, DEBRIS OR MATERIALS SHALL NOT BE PLACED OVER ROOT SYSTEMS OF THE TREES WITHIN THE PROTECTIVE FENCING. NO CONTAMINANTS WILL BE DUMPED OR FLUSHED WHERE FEEDER ROOTS OF TREES EXIST.

c) THE DEVELOPER OR HIS/HER AGENTS SHALL TAKE EVERY PRECAUTION NECESSARY TO PREVENT DAMAGE TO TREES OR SHRUBS TO BE RETAINED.

d) WHERE LIMBS OR PORTIONS OF TREES ARE REMOVED TO ACCOMMODATE CONSTRUCTION WORK, THEY WILL BE REMOVED CAREFULLY IN ACCORDANCE WITH ACCEPTED AGRICULTURAL PRACTICES.

e) WHERE ROOT SYSTEMS OF PROTECTED TREES ARE EXPOSED DIRECTLY ADJACENT TO OR DAMAGED BY CONSTRUCTION WORK, THEY SHALL BE TRIMMED NEATLY AND THE AREA BACK FILLED WITH APPROPRIATE MATERIAL TO PREVENT DESICCATION.

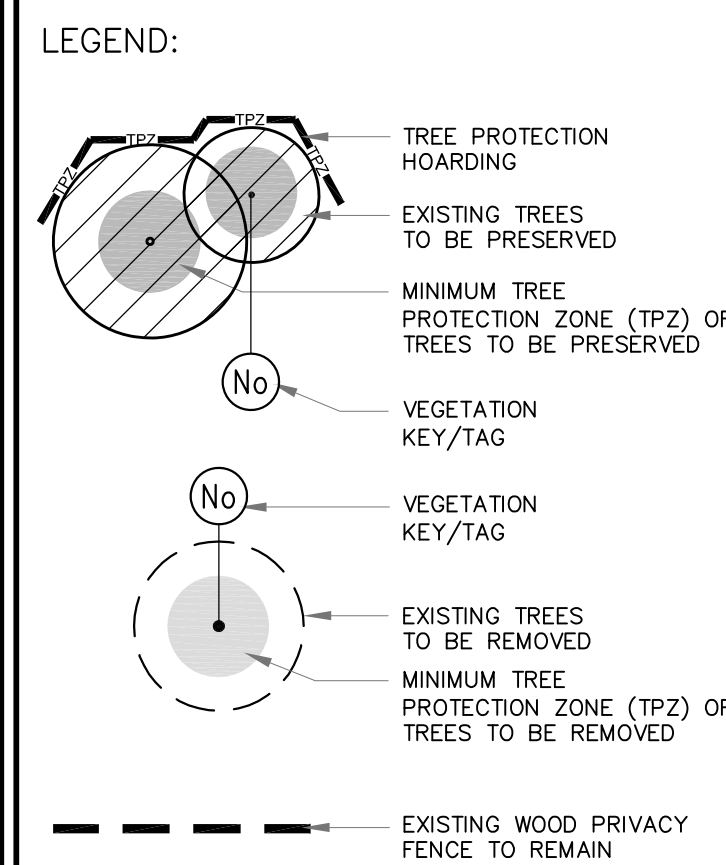
f) TREES THAT HAVE DIED OR HAVE BEEN DAMAGED BEYOND REPAIR, SHALL BE REMOVED AND REPLACED BY THE OWNER AT HIS OWN EXPENSE WITH TREES OF A SIZE AND SPECIES AS APPROVED BY THE PLANNING AND DEVELOPMENT DEPARTMENT.

g) IF GRADES AROUND TREES TO BE PROTECTED ARE LIKELY TO CHANGE, THE OWNER SHALL BE REQUIRED TO TAKE SUCH PRECAUTIONS AS DRY WELLING, RETAINING WALLS AND ROOT FEEDING TO THE SATISFACTION OF THE PLANNING AND DEVELOPMENT DEPARTMENT.

NOTE: THE PROTECTIVE HOARDING IS TO BE SUPPLIED, INSTALLED AND MAINTAINED IN GOOD CONDITION BY THE DEVELOPER AT HIS OWN COST PRIOR TO TOPSOIL STRIPPING, PRESERVING OF, OR ANY CONSTRUCTION ON THE SITE AND SHALL BE MAINTAINED IN GOOD REPAIR THROUGHOUT ALL PHASES OF SERVICING AND CONSTRUCTION ON THE SITE.

NOTE: THE DEVELOPER IS RESPONSIBLE FOR ENSURING THAT TREE PROTECTION HOARDING IS MAINTAINED THROUGHOUT ALL PHASES OF DEMOLITION AND CONSTRUCTION IN THE LOCATION AND CONDITION AS APPROVED BY THE COMMUNITY SERVICES DEPARTMENT. NO MATERIALS OR STRUCTURES MAY BE PLACED WITHIN THE AREA OF HOARDING. THIS INCLUDES, BUT IS NOT LIMITED TO TOPSOIL, STOCKPILING, CONSTRUCTION VEHICLES AND TRAILERS, CONSTRUCTION MATERIALS AND DEBRIS, SIGNAGE AND SALES/PROMOTIONAL TRAILERS. FAILURE TO MAINTAIN THE HOARDING AS ORIGINALLY APPROVED OR THE STORAGE OF MATERIALS/STRUCTURES WITHIN APPROVED LIMITS OF HOARDING WILL BE CAUSE FOR THE LETTER OF CREDIT TO BE HELD FOR TWO YEARS FOLLOWING THE COMPLETION OF ALL SITE WORKS.

- GENERAL NOTES**
- VERIFY ALL DIMENSIONS.
 - DO NOT SCALE DRAWINGS.
 - REPORT ANY DISCREPANCIES, DISCOVERED ERRORS, OR OMISSIONS TO THE LANDSCAPE ARCHITECT BEFORE PROCEEDING.
 - IT IS ADVISED THAT CONTRACTORS CONTACT THE LANDSCAPE ARCHITECT PRIOR TO CONSTRUCTION TO ENSURE THE USE OF THE LATEST REVISED DRAWINGS.
 - DRAWINGS AND SPECIFICATIONS ARE THE PROPERTY OF THE LANDSCAPE ARCHITECT.



MATTHEW J. REGIMBAL
Member Society of Arboriculture
Certified Arborist #0N-758A
Date: JULY 22, 2021

1 TREE PROTECTION HOARDING

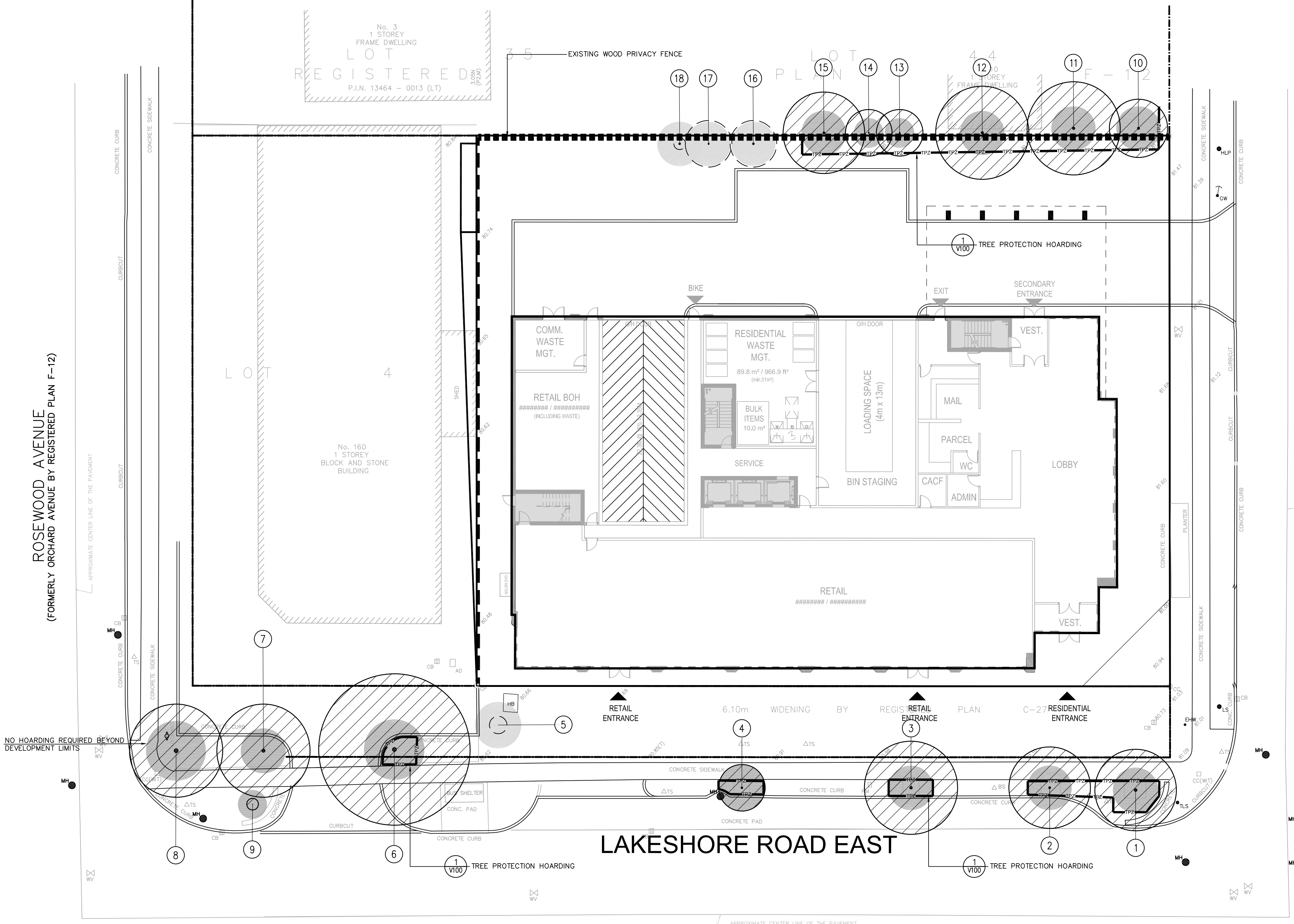
- NOTES:**
- WHERE T-BARS CONFLICT WITH PAVERS, WOOD FRAMING AND ANCHORING WILL BE REQUIRED.
 - ALL ANCHORING WILL BE OUTSIDE OF TPZ.

Tree Inventory Table Descriptions

Tag#	This number refers to the tag number on the tree.	
Species	The botanical and common names are provided for each tree.	
DBH	This refers to diameter (in centimeters) at breast height and is measured at 1.4m above the ground for each tree.	
TI	Trunk Integrity	An assessment of the tree's trunk for any defects or weaknesses. It is measured on an ascending scale of Poor-fair-good.
CS	Canopy Structure	An assessment of the tree's main scaffold branches and the canopy of the tree for the obvious defects or weaknesses. It is measured on an ascending scale of poor-fair-good.
CV	Canopy Vitality	An assessment of the general health and vigor of the tree, derived partly through a comparison of deadwood and live growth relative to a 100% healthy tree. The size and colour of foliage are also considered in this category. During the leaf-off season, the amount and distribution of buds is an important determinant of canopy vitality. This indicator is also measured on an ascending scale of poor-fair-good.
CW	Canopy Width	An estimation of the average diameter of the tree canopy, in meters.
TPZ	Recommended Tree Preservation Zone.	
Comments	Description of trees, locations and identified concerns.	
Action	Recommendation to Remove or Retain trees based on proposed site plan, grading & servicing requirements.	

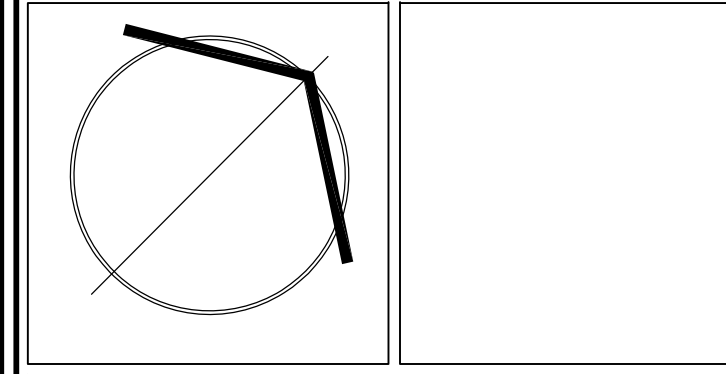
KEY#	Common Name	Botanical Name	DBH (cm)	TI	CS	CV	CW (m)	TPZ	Comments	Action
1	Honey Locust sp.	<i>Gleditsia triacanthos</i> sp.	22.5	Fair	Good	Good	7	1.8	Located on Municipal Boulevard, minor canopy dieback, surrounded by paving, rubberized mulch over tree pit, tree guard.	Preserve
2	Honey Locust sp.	<i>Gleditsia triacanthos</i> sp.	16	Good	Good	Good	7	1.8	Located on Municipal Boulevard, minor canopy dieback, surrounded by paving, tree guard.	Preserve
3	Honey Locust sp.	<i>Gleditsia triacanthos</i> sp.	22	Good	Fair	Good	8	1.8	Located on Municipal Boulevard, minor canopy dieback, surrounded by paving, tree guard, crossing branch interferes with main scaffold branch.	Preserve
4	Honey Locust sp.	<i>Gleditsia triacanthos</i> sp.	14	Good	Fair	Good	4	1.8	Located on Municipal Boulevard, minor canopy dieback, surrounded by paving, tree guard, no terminal branching causing dwarf canopy.	Preserve
5	Pyramidal White Cedar	<i>Thuja occidentalis 'Pyramidalis'</i>	18	Fair	Fair	Fair	1.5	1.8	Co-dominant leaders, half dead, included bark at stem union.	Remove
6	Honey Locust sp.	<i>Gleditsia triacanthos</i> sp.	33	Fair	Good	Good	13	2.4	Dead branching on interior canopy, root fair 300mm above ex. Sidewalk, structural roots visible at surface, conflicting with existing curb and paving.	Preserve
7	Honey Locust sp.	<i>Gleditsia triacanthos</i> sp.	26	Good	Good	Good	8	1.8	Good form, located on adjacent property.	Preserve
8	Honey Locust sp.	<i>Gleditsia triacanthos</i> sp.	33	Good	Good	Good	8	2.4	Good form, located on adjacent property.	Preserve
9	Servixberry sp.	<i>Amsincher canadensis</i> sp.	3	Good	Fair	Fair	1	1.2	Newly planted street tree in front of neighbouring property to the west.	Preserve
10	Crabapple sp.	<i>Malus</i> sp.	18	Fair	Fair	Good	5	1.8	Located on adjacent property, branches overhanging property limit, dead lower branch, canopy interfering with overhead utilities and privacy fence.	Preserve
11	Black Walnut sp.	<i>Juglans nigra</i>	20	Good	Fair	Fair	8	1.8	Located on adjacent property, branches overhanging property limit, dead lower branch, canopy interfering with overhead utilities and privacy fence, missing terminal.	Preserve
12	Black Walnut sp.	<i>Juglans nigra</i> sp.	20	Fair	Fair	Fair	8	1.8	Located on adjacent property, branches overhanging property limit, dead lower branch, canopy interfering with overhead utilities and privacy fence, missing terminal.	Preserve
13	Norway Maple sp.	<i>Acer platanoides</i> sp.	8	Good	Good	Good	4	1.2	Located on adjacent property, branches overhanging property limit, dead lower branch, canopy interfering with overhead utilities and privacy fence.	Preserve
14	Norway Maple sp.	<i>Acer platanoides</i> sp.	8	Good	Good	Good	4	1.2	Located on adjacent property, branches overhanging property limit, dead lower branch, canopy interfering with overhead utilities and privacy fence.	Preserve
15	Buckthorn sp.	<i>Rhamnus cathartica</i> sp.	16	Fair	Fair	Fair	7	1.8	Located on adjacent property, branches overhanging property limit, dead lower branch, canopy interfering with privacy fence.	Remove
16	Siberian Elm sp.	<i>Ulmus pumila</i> sp.	15	Fair	Poor	Poor	4	1.8	Branches overhanging property limit, dead lower branches, canopy interfering with privacy fence.	Remove
17	Manitoba Maple sp.	<i>Acer negundo</i> sp.	15	Fair	Fair	Fair	4	1.8	Branches overhanging property limit, dead lower branch, canopy interfering with privacy fence.	Remove
18	Cherry	<i>Prunus cerasus</i> sp.	15 & 10	Poor	Poor	Poor	1	1.8	Dead, co-dominant stem, hanging over neighboring property.	Remove

2 EXISTING TREE INVENTORY



No.	DATE	REVISION	BY
6	OCT. 18, 2021	ISSUED FOR ZONING	B.B.
5	SEPT. 21, 2021	ISSUED FOR COORDINATION	B.B.
4	AUG. 16, 2021	ISSUED FOR COORDINATION	B.B.
3	JULY 23, 2021	ISSUED FOR COORDINATION	B.B.
2	JULY 19, 2021	ISSUED FOR COORDINATION	B.B.
1	JUNE 24, 2021	ISSUED FOR ZONING	B.B.

It is the responsibility of the Contractor and/or Owner to ensure that the drawings with the latest revisions are used for construction.



SBK 5770 HURONTARIO STREET, SUITE 320
MISSISSAUGA, ONTARIO, L5R 3G5
T: 416.695.4949 F: 905.712.3101
WWW.STRYBOS.COM

STRYBOS BARRON KING
LANDSCAPE ARCHITECTURE

PROJECT: **PROPOSED MIXED-USE DEVELOPMENT**
170 LAKESHORE ROAD EAST
MISSISSAUGA, ONTARIO
LIGHTPOINT PROPERTIES INC.

DRAWING TITLE: **TREE INVENTORY AND PRESERVATION PLAN**

SCALE: 1:200	PROJECT No. 21-5638
DATE: JUNE 2021	DRAWING No. V100
DRAWN BY: K.L.	
CHECKED BY: L.A.B.	