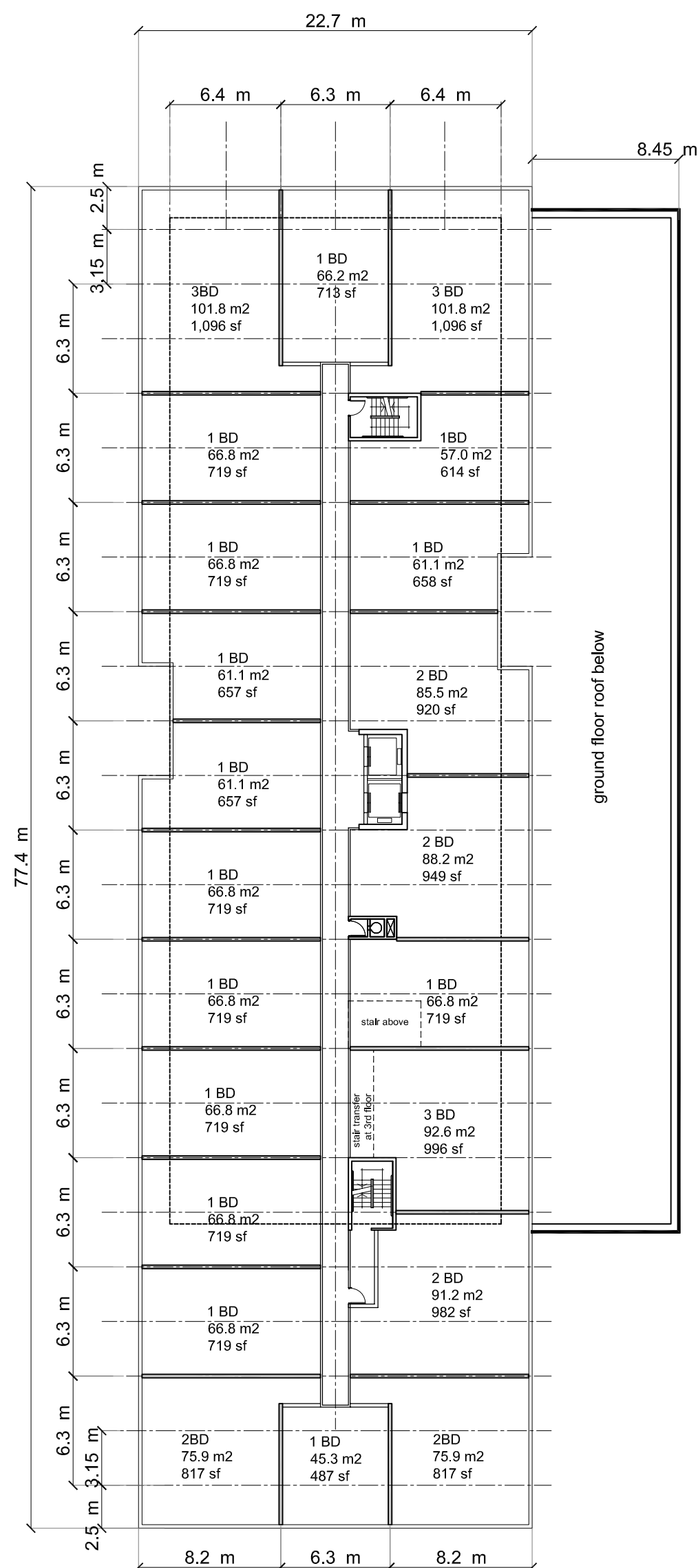
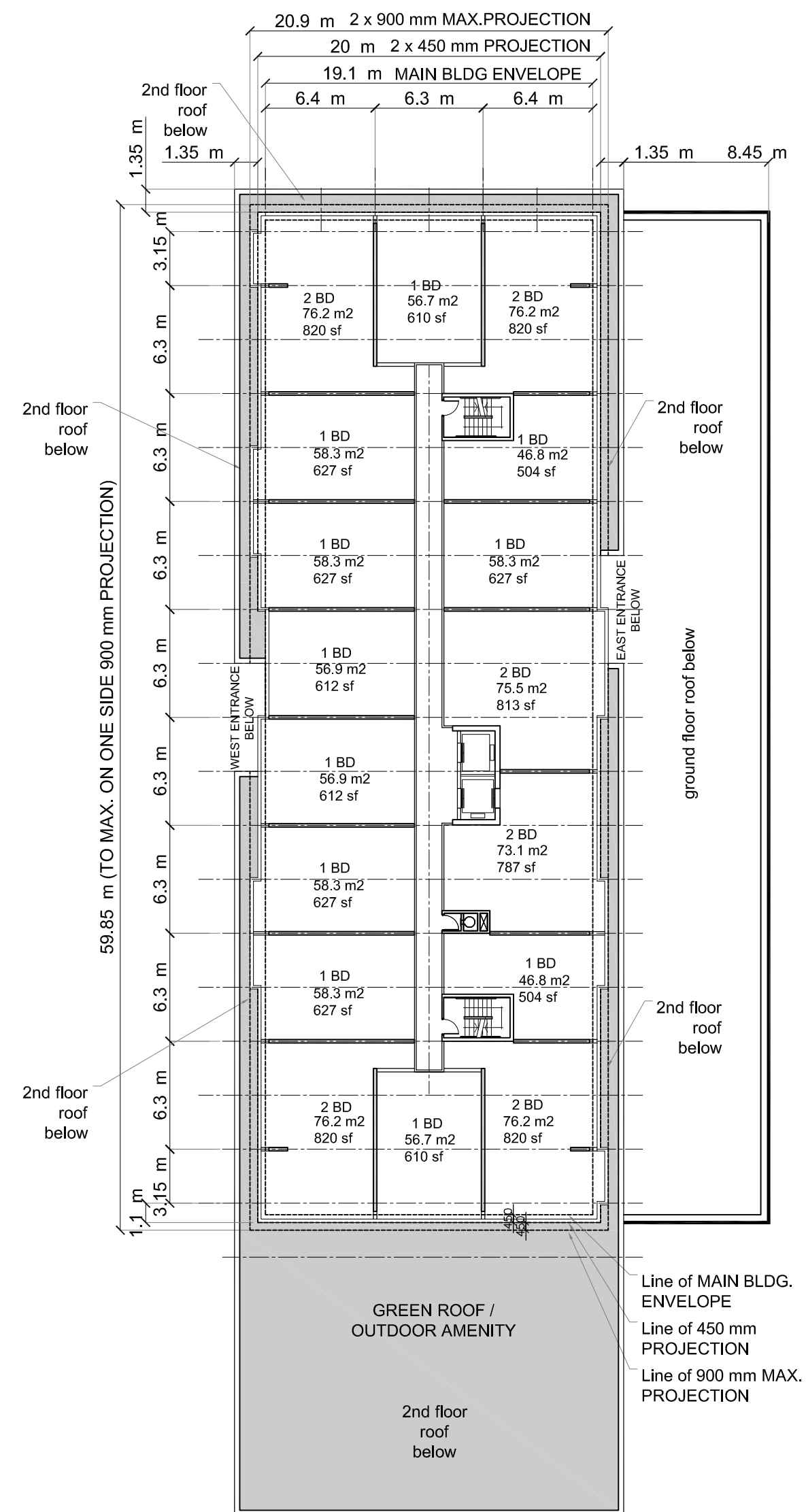


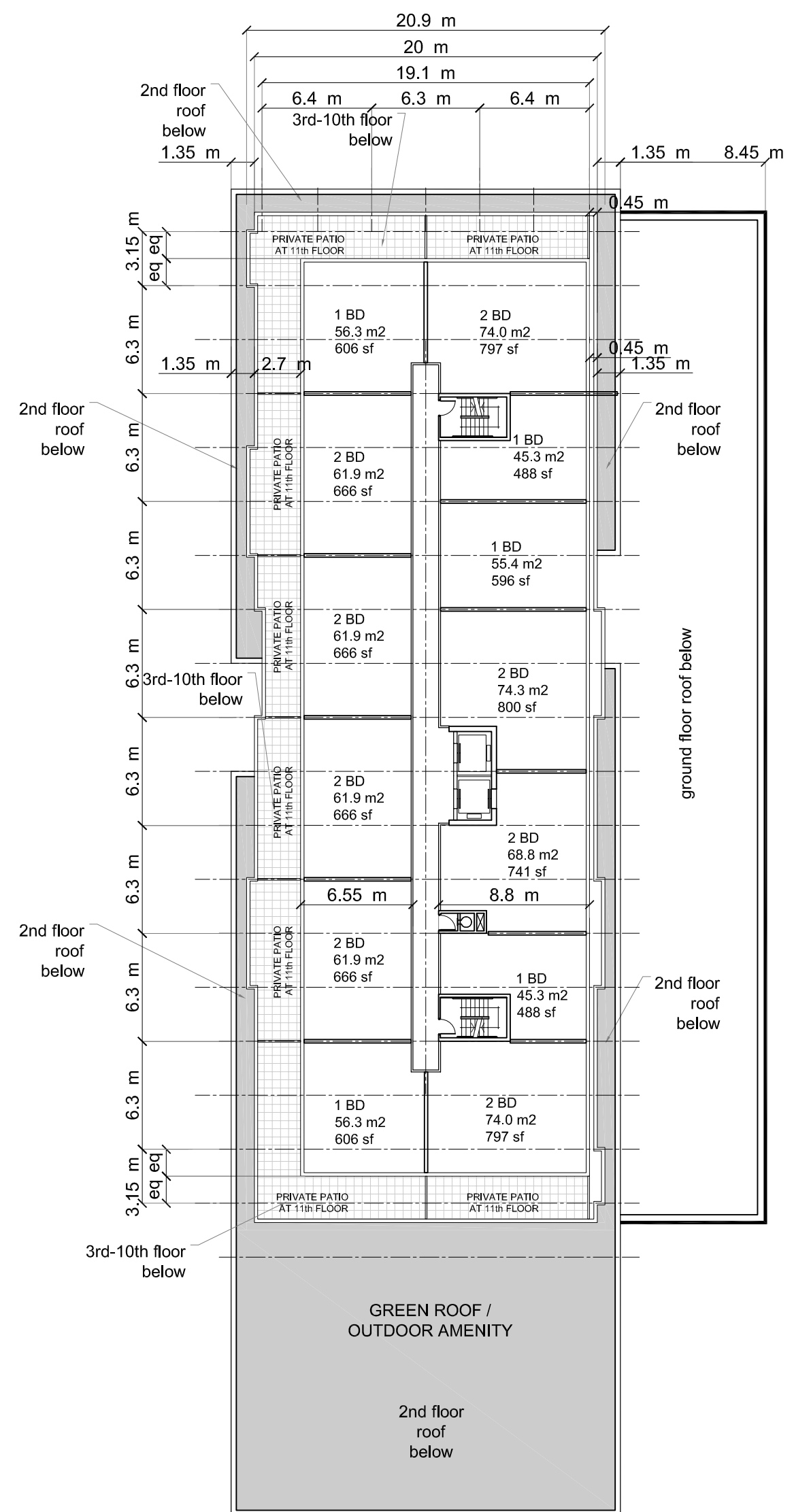
2nd FLOOR



7th FLOOR (floors 3rd-6th, 8th-10th SIM.)



11th-12th FLOOR



No	DATE	DESCRIPTION
1	2019-Oct-18	FOR REVIEW and COMMENTS
2	2019-Nov-29	FOR DARC REVIEW
3	2020-Apr-14	TO CONSULTANTS
4	2020-May-01	TO CONSULTANTS
5	2020-June-04	TO CONSULTANTS
6	2020-June-19	TO CONSULTANTS
7	2020-July-14	RE-ZONING APPLICATION
8	2020-Aug-07	RE-ZONING APPLICATION
9	2021-Jun-30	FOR COORDINATION
10	2021-Aug-17	FOR COORDINATION
11	2021-Sep-09	For Coordination and review
12	2021-Sep-24	First OPA/ZBA Resubmission

12	2021-Aug-17	Parking elevator relocation
11	2021-Aug-10	Land Severance Coord.
10	2021-May-5	Transformer Vault Coord.
9	2021-Apr-27	As per Planning Status Report
8	2020-Aug-04	Drop-off at Extg. Bldg. Rev.
7	2020-July-29	Outdoor Pool
6	2020-July-28	Drop-off at Extg. Building
5	2020-July-16	Drop-off at Extg. Building
4	2020-July-02	Coordination
3	2020-June-19	Coordination
2	2020-June-04	Coordination
1	2020-Jan-31	DARC Review Comments

REVISION:

Starwood Group Inc.

IBI IBI GROUP ARCHITECTS (CANADA) INC.
 7th Floor-55 St. Clair Avenue West
 Toronto ON M4V 2V7 Canada
 tel 416 596 1830 fax 416 596 0644
 ibigroup.com

© COPYRIGHT IBI GROUP ARCHITECTS (CANADA) INC.
 ALL RIGHTS RESERVED.

IBI GROUP ARCHITECTS (CANADA) INC. RETAINS ALL RIGHTS OF OWNERSHIP AND COPYRIGHT IN THE ELECTRONIC FILES AND REPRODUCTIONS THEREOF. THEY MAY BE REPRODUCED ONLY FOR LEGITIMATE PURPOSES RELATING TO THE SPECIFIC PROJECT FOR WHICH THEY WERE PRODUCED. THEY MAY NOT BE ALTERED IN ANY WAY WITHOUT THE EXPRESS WRITTEN APPROVAL OF THE ARCHITECTS.

6719 Glen Erin Drive
 Mississauga, Ontario

TYP.FLOOR PLANS

	Scale: 1 : 300
	Date created: 2019-Aug-01
	Proj. No: 25205
	Dwg. No: A-3.2