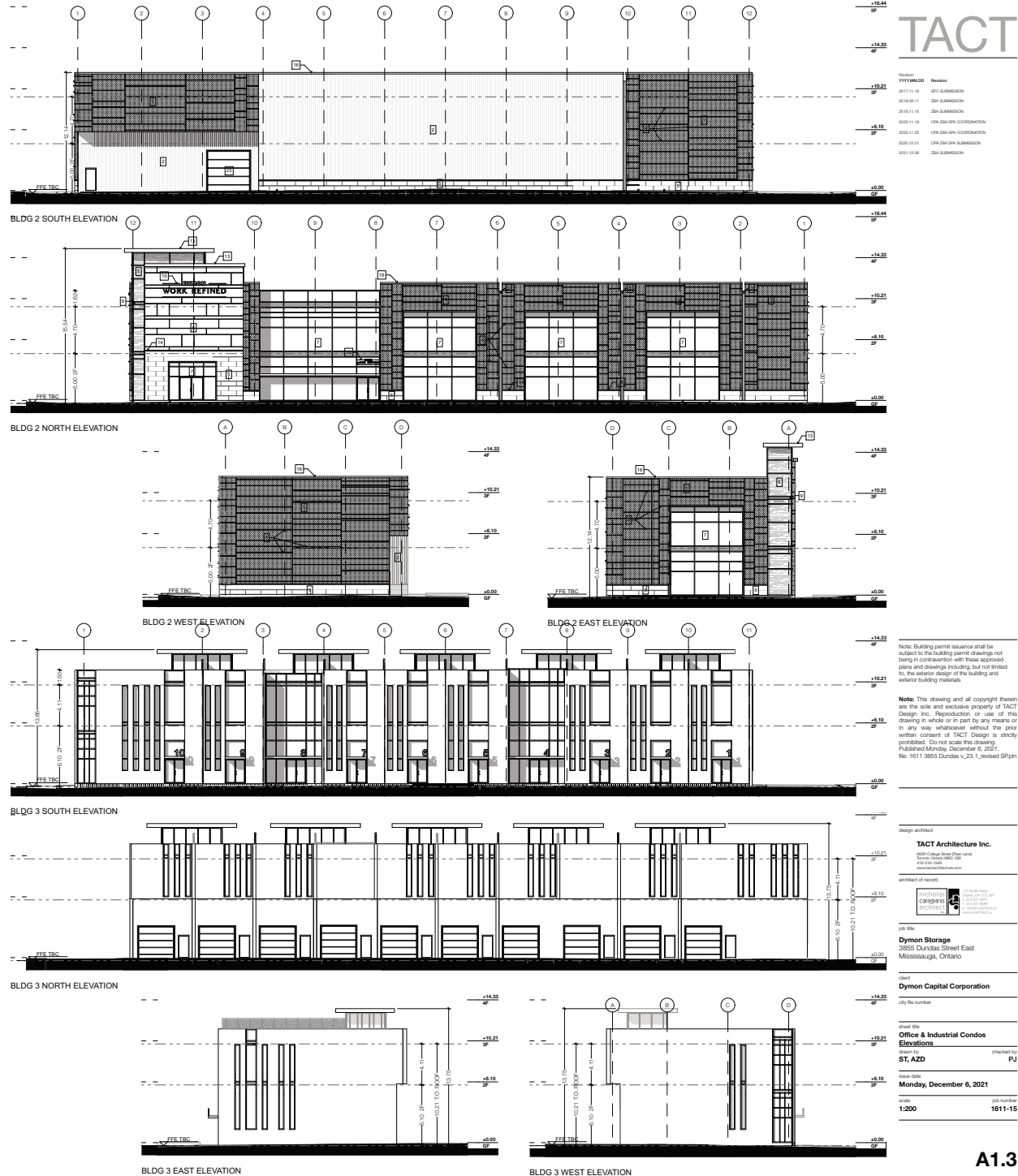


KEY PLAN
SCALE: 1:1000

LEGEND

- 1 INSULATED METAL PANEL (IMP) SYSTEM - HORIZONTAL ORIENTATION - TWIN MICRO-RISE PROFILE - COLOUR: PEWTER
- 2 INSULATED METAL PANEL (IMP) SYSTEM - VERTICAL ORIENTATION - EMBOSSED SHADOWLINE PROFILE - COLOUR: PEWTER
- 3 INSULATED METAL PANEL (IMP) SYSTEM - VERTICAL ORIENTATION FINESSES & REVEALS - EMBOSSED SHADOWLINE PROFILE - COLOUR: DARK BRONZE
- 4 KINGSPAN HARNNER FIN - STANDARD RECTANGLE FIN COLOUR: PEWTER
- 5 3 1/2" ARCHITECTURAL MASONRY UNIT - ARCSRAFT ADMIR LIMESTONE - FINISH FINE DRESSED SEPARATION - FINISH SAND
- 6 ALUCCOL - ALUMINIUM COMPOSITE MATERIAL - FINISH LIGHT VENGE 4mm FR COFE
- 7 CURTAIN WALL GLAZING - FINISH VISION GLASS
- 8 CURTAIN WALL GLAZING - FINISH FRITTED WINDOW FILM ON VISION GLASS
- 9 SPANDREL PANEL - COLOUR TO MATCH IMP PEWTER
- 10 INTERNALLY LIT SIGNAGE - COLOUR: TBD
- 11 GLASS SIGNAGE BAND - COLOUR: TBD
- 12 BACK-LIT GLASS WITH FRIT PATTERN - COLOUR TO MATCH - SOLID BLUE WITH WHITE FRITTING
- 13 METAL CANOPY - COLOUR TO MATCH IMP PEWTER
- 14 CONTINUOUS BENT FLASHING SILL - COLOUR TO MATCH IMP PEWTER
- 15 CONTINUOUS BENT METAL CAP - PREFINISH - COLOUR TO MATCH IMP DARK BRONZE
- 16 FIRESTONE PREFINISHED METAL CAP - FINISH SLATE GREY - ALL BENT METAL CAP PARTS
- 17 PREFINISHED METAL IMP STACK JOINT COVER TRIM - COLOUR TO MATCH IMP PEWTER
- 18 PREFINISHED METAL IMP STACK JOINT COVER TRIM - COLOUR TO MATCH IMP DARK BRONZE
- 19 INSULATED HOLLOW METAL DOOR - COLOUR TO MATCH IMP PEWTER
- 20 INSULATED HOLLOW METAL DOOR - COLOUR TO MATCH ARCHITECTURAL MASONRY UNIT ADMIR LIMESTONE
- 21 INSULATED HOLLOW METAL DOOR - COLOUR TO MATCH VERTICAL IMP DARK BRONZE
- 22 HIGH SPEED ROLL UP OH DOOR - FINISH STEEL FRAME WITH POLYCARBONATE VISION SLATS
- 23 INSULATED OH DOOR - COLOUR TO MATCH IMP PEWTER
- 24 POURED CONCRETE
- 25 RESERVED



TACT

Revision
 2017.11.16 SFC SUBMISSION
 2018.03.11 2DA SUBMISSION
 2018.04.12 2DA SUBMISSION
 2018.11.16 OPA 2DA SPA COORDINATION
 2020.11.05 OPA 2DA SPA SUBMISSION
 2020.12.01 OPA 2DA SPA SUBMISSION
 2021.02.06 2DA SUBMISSION

Note: Building permit issuance shall be subject to the building permit drawings not being in contravention with these approved plans and drawings including, but not limited to, the exterior design of the building and exterior building materials.

Note: This drawing and all copyright therein are the sole and exclusive property of TACT Design Inc. Reproduction or use of this drawing in whole or in part by any means or in any way whatsoever without the prior written consent of TACT Design is strictly prohibited. Do not scale the drawing. Published Monday, December 6, 2021. Rev: 161113855 Dundas v.231_1-revised SP-Jan

design architect
TACT Architecture Inc.
 6661 College Street (near Level)
 Toronto, Ontario M3J 1K6
 416-291-1949
 www.tactarchitecture.com

architect of record
 michaeline
 cognigni
 architect

job site
Dymon Storage
 5825 Dundas Street East
 Mississauga, Ontario

client
Dymon Capital Corporation
 city file number

issued title
Office & Industrial Condos Elevations
 prepared by
ST, AZD checked by
PJ

issue date
Monday, December 6, 2021

scale
1:200 job number
1611-15