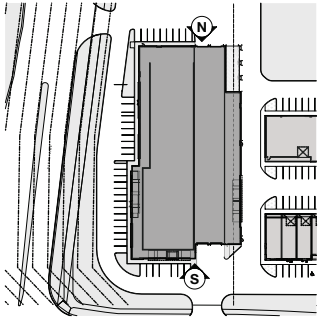


Revision	Revision
2017.11.16	SFC SUBMISSION
2018.08.11	2DA SUBMISSION
2018.11.01	2DA SUBMISSION
2018.11.19	ORA 2DA SPA COORDINATION
2020.11.25	ORA 2DA SPA COORDINATION
2020.12.01	ORA 2DA SPA SUBMISSION
2021.12.06	2DA SUBMISSION



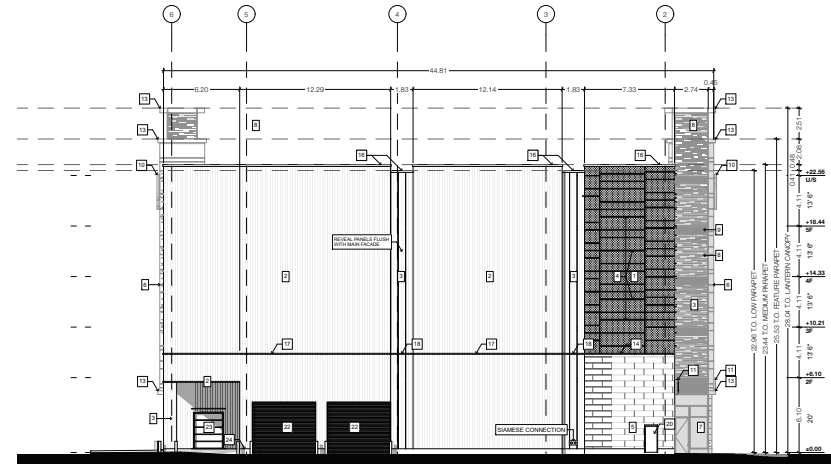
KEY PLAN
SCALE: 1:1000

LEGEND

- 1 INSULATED METAL PANEL (IMP) SYSTEM - HORIZONTAL ORIENTATION - "MINI MICRO-RIE" PROFILE - COLOUR: PEWTER
- 2 INSULATED METAL PANEL (IMP) SYSTEM - VERTICAL ORIENTATION - EMBOSSED SHADOWLINE PROFILE - COLOUR: PEWTER
- 3 INSULATED METAL PANEL (IMP) SYSTEM - VERTICAL ORIENTATION FINCESSES & REVEALS - EMBOSSED SHADOWLINE PROFILE - COLOUR: DARK BRONZE
- 4 KINGSPAN HARNNER FIN - STANDARD RECTANGLE FIN COLOUR: PEWTER
- 5 3 1/2" ARCHITECTURAL MASONRY UNIT - ARCSRAFT ADAM LIMESTONE - FINISH: FINE DRESSED SEPARATED - FINISHING SAND
- 6 ALUCCOL - ALUMINIUM COMPOSITE MATERIAL - FINISH: LIGHT WEDGE 4mm FR COFE
- 7 CURTAIN WALL GLAZING - FINISH: VISION GLASS
- 8 CURTAIN WALL GLAZING - FINISH: FRITTED WINDOW FILM ON VISION GLASS
- 9 SPANDREL PANEL - COLOUR TO MATCH IMP PEWTER
- 10 INTERNALLY LIT SIGNAGE - COLOUR: TBD
- 11 GLASS SIGNAGE BAND - COLOUR: TBD
- 12 BACK-LIT GLASS WITH FRIT PATTERN - COLOUR TO MATCH - SOLID BLUE WITH WHITE FRITTING
- 13 METAL CANOPY - COLOUR TO MATCH IMP PEWTER
- 14 CONTINUOUS BENT FLASHING SILL - COLOUR TO MATCH IMP PEWTER
- 15 CONTINUOUS BENT METAL CAP - PREFINISHED - COLOUR TO MATCH IMP DARK BRONZE
- 16 FIRESTONE PREFINISHED METAL CAP - FINISH: SLATE GREY WALL BENT METAL CAP PANELS
- 17 PREFINISHED METAL IMP STACK JOINT COVER TRIM - COLOUR TO MATCH IMP PEWTER
- 18 PREFINISHED METAL IMP STACK JOINT COVER TRIM - COLOUR TO MATCH IMP DARK BRONZE
- 19 INSULATED HOLLOW METAL DOOR - COLOUR TO MATCH IMP PEWTER
- 20 INSULATED HOLLOW METAL DOOR - COLOUR TO MATCH ARCHITECTURAL MASONRY UNIT ADAM LIMESTONE
- 21 INSULATED HOLLOW METAL DOOR - COLOUR TO MATCH VERTICAL IMP DARK BRONZE
- 22 HIGH SPEED ROLL UP DOOR - FINISH: STEEL FRAME WITH POLYCARBONATE VISION SLATS
- 23 INSULATED OH DOOR - COLOUR TO MATCH IMP PEWTER
- 24 POURED CONCRETE
- 25 RESERVED



SOUTH ELEVATION



NORTH ELEVATION

Note: Building permit issuance shall be subject to the building permit drawings not being in contravention with these approved plans and drawings including, but not limited to, the exterior design of the building and exterior building materials.

Note: This drawing and all copyright therein are the sole and exclusive property of TACT Design Inc. Reproduction or use of this drawing in whole or in part by any means or in any way whatsoever without the prior written consent of TACT Design is strictly prohibited. Do not scale this drawing. Published Monday, December 6, 2021. Rev: 1611 1850 Dundas v.23_1_revised SPJan

design architect
TACT Architecture Inc.
6601 College Street (near Level)
Toronto, Ontario M3J 1K6
416-291-1949
www.tactarchitecture.com

architect of record
Michael Corcoran Architects
17 Front Street East
Toronto, Ontario M5E 1B5
416-977-8888
www.michaelcorcoran.com

job site
Dymon Storage
2825 Dundas Street East
Mississauga, Ontario

client
Dymon Capital Corporation

drawn by
South & North Elevations

checked by
ST, AZD

issue date
Monday, December 6, 2021

scale
1:200