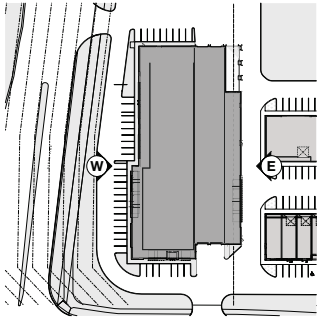


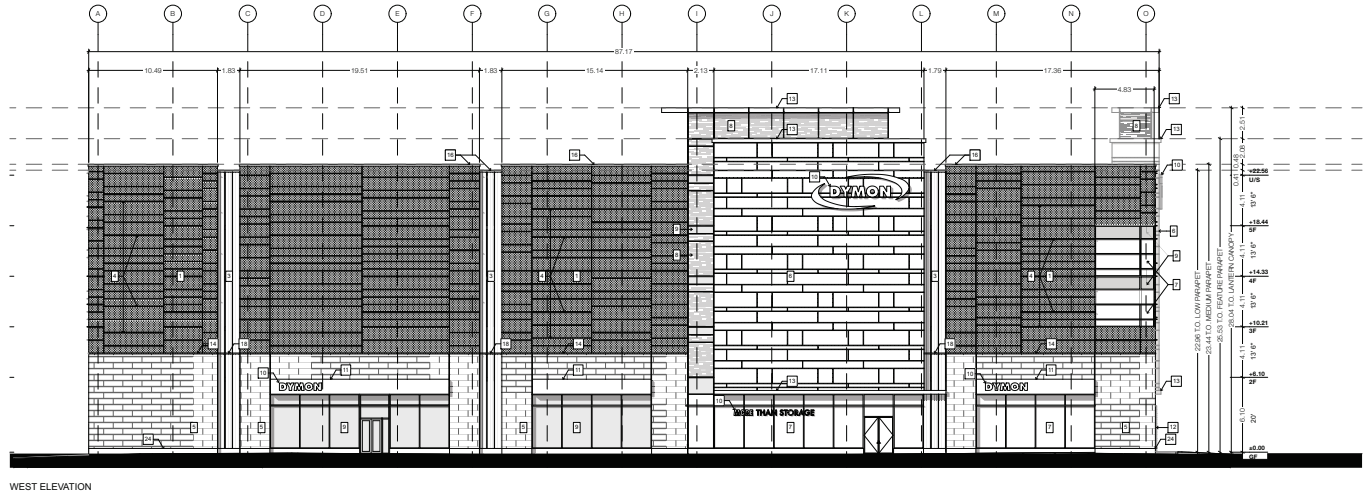
Revision	YYYYMMDD	Revision
2017.11.16	SFC SUBMISSION	
2018.03.11	2DA SUBMISSION	
2018.11.01	2DA SUBMISSION	
2018.11.19	ORA 2DA SPA COORDINATION	
2020.11.25	ORA 2DA SPA COORDINATION	
2020.12.01	ORA 2DA SPA SUBMISSION	
2021.12.06	2DA SUBMISSION	



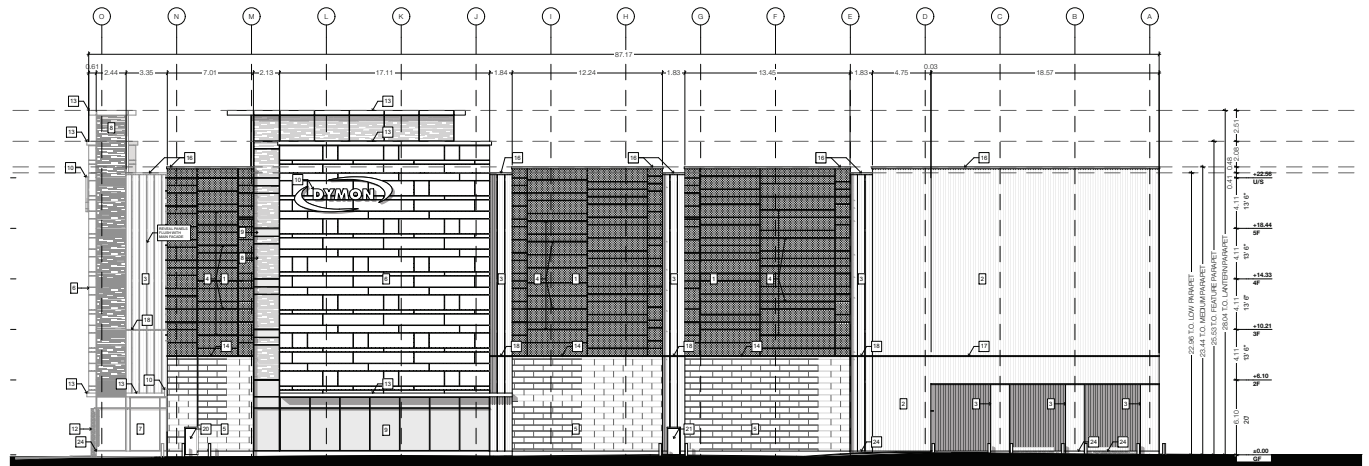
KEY PLAN
SCALE: 1:1000

LEGEND

- 1 INSULATED METAL PANEL (IMP) SYSTEM - HORIZONTAL ORIENTATION - "MINI MICRO-RIE" PROFILE - COLOUR: PEWTER
- 2 INSULATED METAL PANEL (IMP) SYSTEM - VERTICAL ORIENTATION - "EMBOSSED SHADOWLINE" PROFILE - COLOUR: PEWTER
- 3 INSULATED METAL PANEL (IMP) SYSTEM - VERTICAL ORIENTATION - "EMBOSSED SHADOWLINE" PROFILE - COLOUR: PEWTER
- 4 KINGSPAN HARNNER FIN - STANDARD RECTANGLE FIN - COLOUR: PEWTER
- 5 3 1/2" ARCHITECTURAL MASONRY UNIT - ARBESCRIFT LUMEN LIMESTONE - FINISH: FINE DRESSED SEPA-VENED - FINISHING SAND
- 6 ALU-COIL - ALUMINIUM COMPOSITE MATERIAL - FINISH: LIGHT WEDGE 4mm FIN COFE
- 7 CURTAIN WALL GLAZING - FINISH: VISION GLASS
- 8 CURTAIN WALL GLAZING - FINISH: FRITTED WINDOW FILM ON VISION GLASS
- 9 SPANDREL PANEL - COLOUR TO MATCH IMP PEWTER
- 10 INTERNALLY LIT SIGNAGE - COLOUR: TEB
- 11 GLASS SIGNAGE BAND - COLOUR: TEB
- 12 BACK-LIT GLASS WITH FRIT PATTERN - COLOUR TO MATCH - "SOLD BLUE" WITH WHITE FRITTING
- 13 METAL CANOPY - COLOUR TO MATCH IMP PEWTER
- 14 CONTINUOUS BENT FLASHING SILL - COLOUR TO MATCH IMP PEWTER
- 15 CONTINUOUS BENT METAL CAP - PREFINISHED - COLOUR TO MATCH IMP DARK BRONZE
- 16 FIRESTONE PREFINISHED METAL CAP - FINISH: SLATE GREY - ALL BENT METAL CAP PARAMETERS
- 17 PREFINISHED METAL IMP STACK JOINT COVER TRIM - COLOUR TO MATCH IMP PEWTER
- 18 PREFINISHED METAL IMP STACK JOINT COVER TRIM - COLOUR TO MATCH IMP DARK BRONZE
- 19 INSULATED HOLLOW METAL DOOR - COLOUR TO MATCH IMP PEWTER
- 20 INSULATED HOLLOW METAL DOOR - COLOUR TO MATCH ARCHITECTURAL MASONRY UNIT ADMIR LIMESTONE
- 21 INSULATED HOLLOW METAL DOOR - COLOUR TO MATCH VERTICAL IMP DARK BRONZE
- 22 HIGH SPEED ROLL UP DOOR - FINISH: STEEL FRAME WITH POLYCARBONATE VISION SLATS
- 23 INSULATED OH DOOR - COLOUR TO MATCH IMP PEWTER
- 24 POURED CONCRETE
- 25 RESERVED



WEST ELEVATION



EAST ELEVATION

Note: Building permit issuance shall be subject to the building permit drawings not being in contravention with these approved plans and drawings including, but not limited to, the exterior design of the building and exterior building materials.

Note: This drawing and all copyright therein are the sole and exclusive property of TACT Design Inc. Reproduction or use of this drawing in whole or in part by any means or in any way whatsoever without the prior written consent of TACT Design is strictly prohibited. Do not scale this drawing. Published Monday, December 6, 2021. Rev: 1611 1855 Dundas v.23_1-revised SP/Jan

design architect

TACT Architecture Inc.

6601 College Street (near Level)
Toronto, Ontario M3J 1K6
416-291-1949
www.tactarchitecture.com

architect of record



job site

Dymon Storage
3825 Dundas Street East
Mississauga, Ontario

client

Dymon Capital Corporation

city file number

project file

West & East Elevations

designed by

ST, AZD

checked by

PJ

issued date

Monday, December 6, 2021

scale

1:200

job number

1611-15