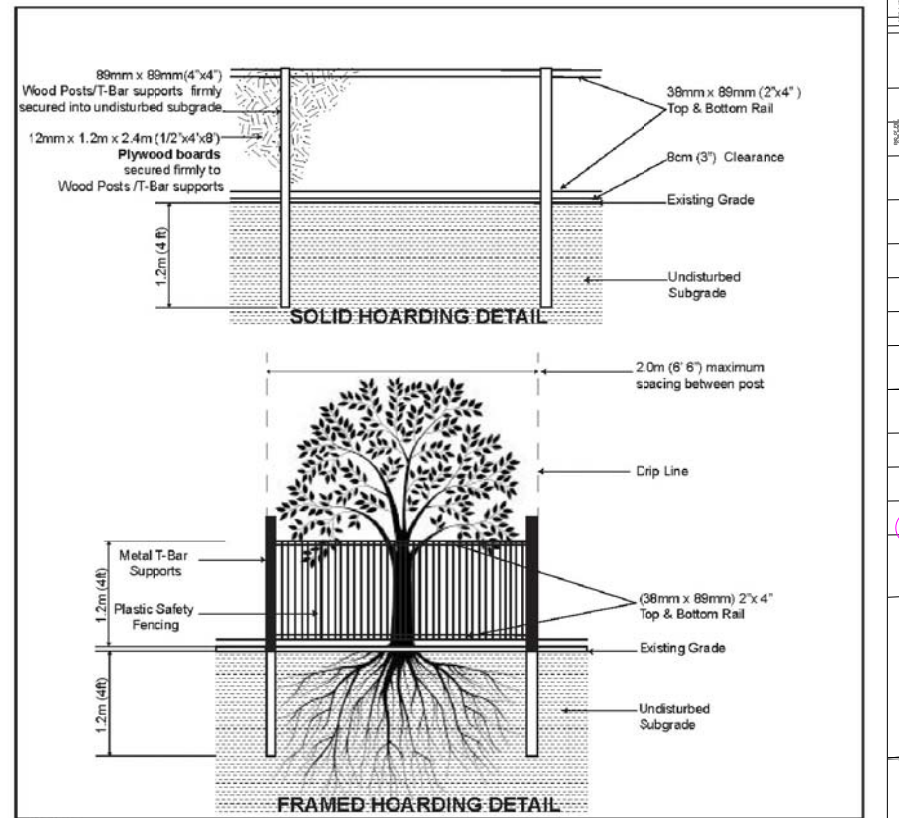
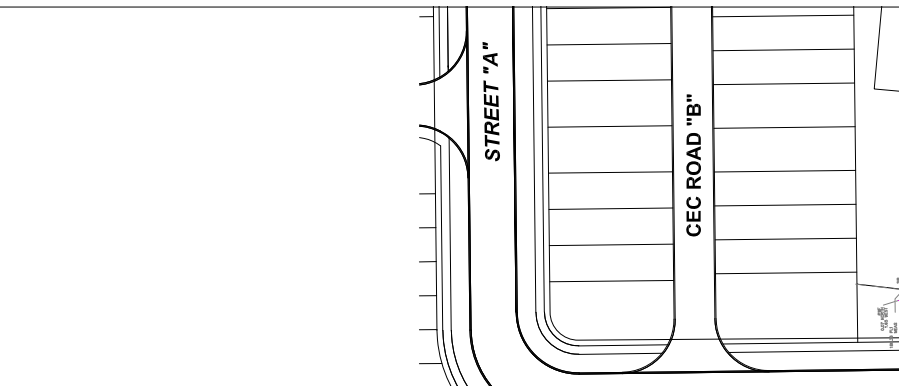


Tree O

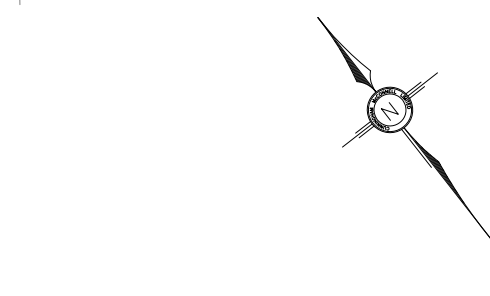
Tree O is a Butternut (*Juglans cinerea*) tree, which is an endangered species as per the COSEWIC list. Although this tree can be retained in the context of the proposed site plan, a formal assessment of this tree must be conducted and reported to the Ontario Ministry of the Environment, Conservation and Parks. The retention suitability of this tree will ultimately be determined by a Butternut Health Assessor and the Ontario Ministry of the Environment, Conservation and Parks.

Trees 502, 530, 532 – 540, 553, G, I – K, and O

Encroachment into the dripline of Tree 502 is required due to the future road widening of Ninth Line. Encroachment into the driplines of Trees 530, 532 – 540, 553, G, I – K, and O is required due to a proposed walkway. Trees 532 – 540, and 553 are being granted at least 1.8m of protection from their base. Trees 530, 532 – 540, and 553 are being granted at least 2.4m of protection from their base. Tree 530 is being granted at least 3m of protection and tree 502 is being granted at least 3.6m of protection. Although the driplines of these trees are being encroached, they are being granted at least the minimum protection consistent with protection standards utilized by surrounding municipalities. This level of protection is expected to be sufficient to protect these trees during construction.



- NOTES:**
1. Hoarding details to be determined following initial site inspection.
 2. Private tree hoarding to be approved by Development & Design ; City tree hoarding to be approved by Community Services Dept.
 3. Hoarding must be supplied, installed and maintained by the applicant throughout all phases of construction. Inspection must be conducted by the Development and Design Division prior to removing any/all private hoarding.
 4. Do not allow water to collect and pond behind or within hoarding.
 5. T-bar supports are acceptable alternative to 4x4 posts. U-shaped metal supports will not be accepted.
 6. Plywood must be utilized for 'solid' hoarding. OSB/Chipboard will not be accepted for solid hoarding. Plywood sheets must be installed on "construction" side of frame.
 7. Applicant is responsible to ensure utility locates are completed within city boulevard prior to installing framed hoarding.



Tree Protection Note:

The applicant is responsible for ensuring that tree protection hoarding is maintained throughout all phases of demolition and construction in the location and condition as approved by the Planning and Building Department. No materials (building materials, soil, etc.) may be stockpiled within the area of hoarding. Failure to maintain the hoarding as originally approved or the storage of materials within the hoarding will be cause for the Letter of Credit to be held for two years following completion of all site works. Hoarding must be inspected prior to the removal of any tree hoarding from the site.

Owner's Signature: _____

Date: _____

LEGEND

- Tree Inventory**
- Refer to Table 1 of report dated 24 August 2021 for tree inventory information. Trees greater than 15cm DBH on and within six metres of the subject property were included in the Inventory.
- Tree Removals**
- The removal of 124 trees will be required to accommodate the proposed development as indicated with RED labels.
- Tree Preservation**
- Preservation of the remaining 44 trees and one tree polygon, will be possible with appropriate tree protection measures. Trees identified for preservation are indicated with GREEN labels. Tree protection measures will have to be implemented prior to construction. Required tree preservation fencing is indicated in MAGENTA. Refer to Tree Protection Plan Notes for preservation details and tree preservation fence detail.
- Tree Label (GREEN), preservation recommended
- Tree Label (RED), removal required due to development
- Dripline (MAGENTA circle)
- Surveyed Conifer Tree
- Surveyed Deciduous Tree
- Estimated Tree Location by KFCI
- Required Tree Protection Fencing (thick MAGENTA)

- Specifications for the Protection and Preservation of Existing Vegetation**
- The following notes are to be included on all tree preservation plans:
1. All existing trees, which are to remain, shall be fully protected with hoarding to City standards, erected beyond their "drip line" prior to the issuance of the Erosion and Sediment Control Permit, to the satisfaction of the Community Services Department. Groups of trees and other existing plantings to be protected, shall be treated in a like manner with hoarding around the entire group(s). Areas within the protective fencing shall remain undisturbed and shall not be used for the storage of building materials or equipment.
 2. No rigging cables shall be wrapped around or installed in trees. Surplus soil, equipment, debris or materials shall not be placed over root systems of the trees within the protective fencing. No contaminants will be dumped or flushed where feeder roots of trees exist.
 3. The developer or his/her agents shall take every precaution necessary to prevent damage to trees or shrubs to be retained.
 4. Where limbs or portions of trees are removed to accommodate construction work, they will be removed carefully in accordance with accepted arboricultural practices.
 5. Where root systems of trees are exposed directly adjacent to or damaged by construction work, they shall be trimmed neatly and the area backfilled with appropriate material to prevent desiccation.
 6. Where necessary, the trees will be given an overall pruning to restore the balance between roots and top growth or to restore the appearance of the trees.
 7. Trees that have died or have been damaged beyond repair, shall be removed and replaced by the owner at the developer's own expense with trees of a size and species as approved by the Community Services Department.
 8. If grades around trees to be protected are likely to change, the owner shall be required to take such precautions as dry welling, retaining walls and root feeding, to the satisfaction of the Community Services Department.

No.	Issue/Revisions	Date	By
1	Report Submission	24 Aug. 2021	KNH

Base Data: Allmap Land Surveyors Inc. (topo); 6IX Design (site plan)

KUNTZ FORESTRY CONSULTING Inc.

PO Box 1267 Lakeshore W PO
146 Lakeshore Road West
Oakville ON L6K 0B3
289.837.1871
www.kuntzforestry.ca
consult@kuntzforestry.ca

Client

NAK Design Strategies
421 Roncesvalles Avenue
Toronto, Ontario M6R 2N1

Property

5034 - 5080 Ninth Line
Mississauga, Ontario

Tree Inventory and Preservation Plan		
Project	P2885	Figure 1
Date	24 August 2021	
Scale	1:1500	