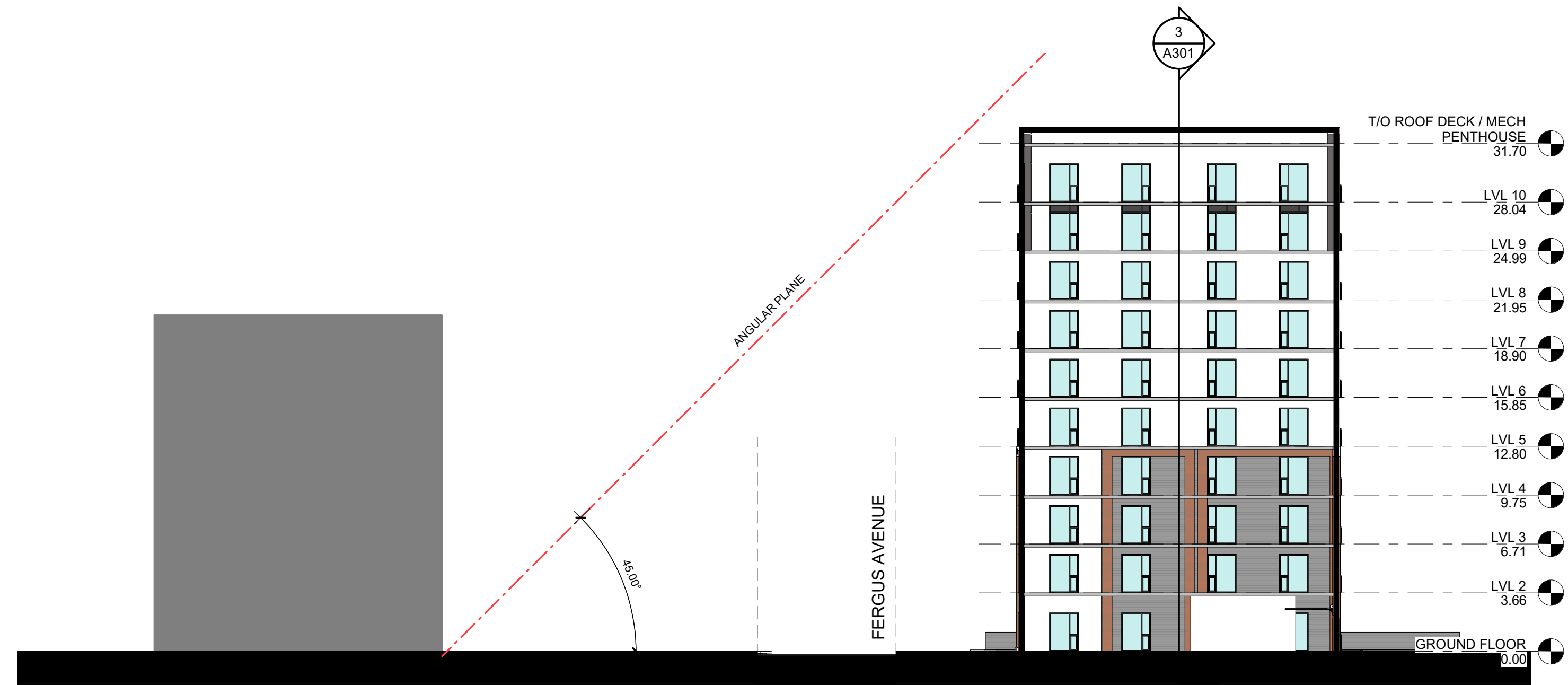
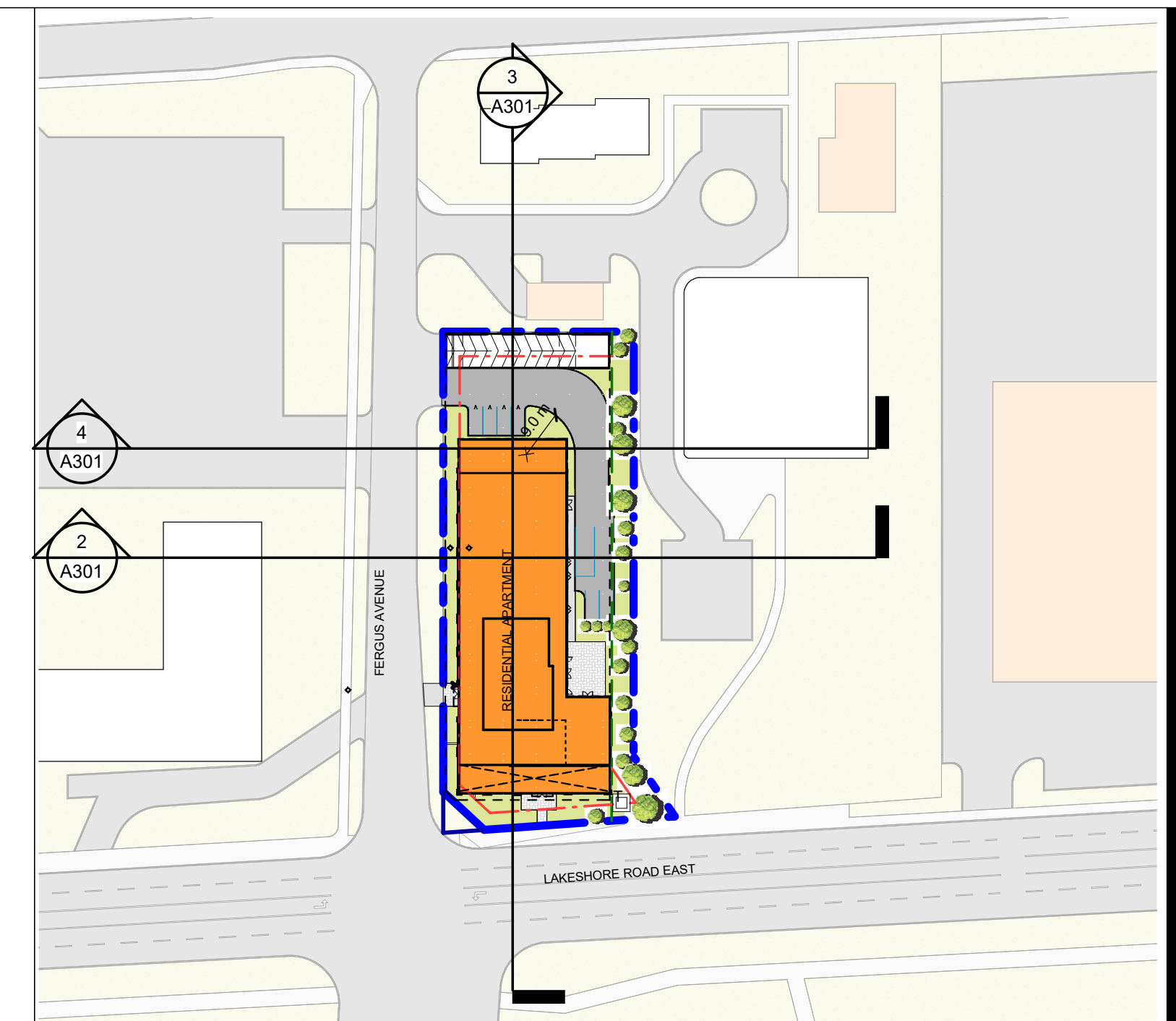


NO.	ISSUED	DATE



2 Section A
A301 1 : 250



ANGULAR PLANE PLAN
1 : 1000



3 Section 7
A301 1 : 250



4 Section C
A301 1 : 250

DO NOT SCALE DRAWINGS. USE ONLY DRAWINGS MARKED "ISSUED FOR CONSTRUCTION". VERIFY CONFIGURATIONS AND DIMENSIONS ON SITE BEFORE BEGINNING WORK. NOTIFY ARCHITECT IMMEDIATELY OF ANY ERRORS, OMISSIONS OR DISCREPANCIES.

CHAMBERLAIN ARCHITECT SERVICES LIMITED AND CHAMBERLAIN CONSTRUCTION SERVICES LIMITED HAVE SIMILAR OWNERSHIP.

CHAMBERLAIN ARCHITECT SERVICES LIMITED HAS COPYRIGHT. CONSTRUCTING A SUBSTANTIALLY SIMILAR BUILDING WITHOUT PERMISSION MAY INFRINGE THE COPYRIGHT OWNERS RIGHTS. MAKING MINOR CHANGES TO PLANS DOES NOT NECESSARILY AVOID COPYRIGHT INFRINGEMENT. INNOCENT INFRINGEMENT IS NOT A DEFENSE TO COPYRIGHT INFRINGEMENT. ©

SEAL

RESIDENTIAL MID-RISE

1303 LAKESHORE RD E
MISSISSAUGA, ON

SHEET NAME

ANGULAR PLANE

START DATE	JUNE 2021
DRAWN BY	Author
CHECKED BY	Checker
SCALE	As indicated
PROJECT NO.	121027

DRAWING

A301

C:\Users\sean\Documents\121027 - 1303 Lakeshore MISS - 2021.07.20_amauripd.rvt 8/8/2021 11:26:47 AM