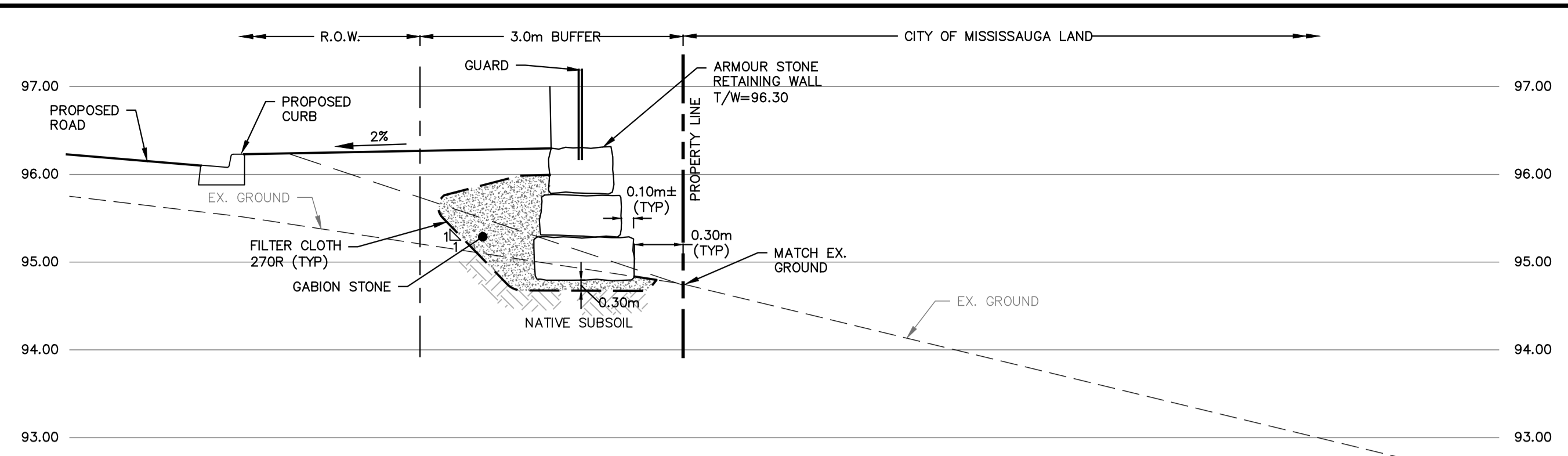
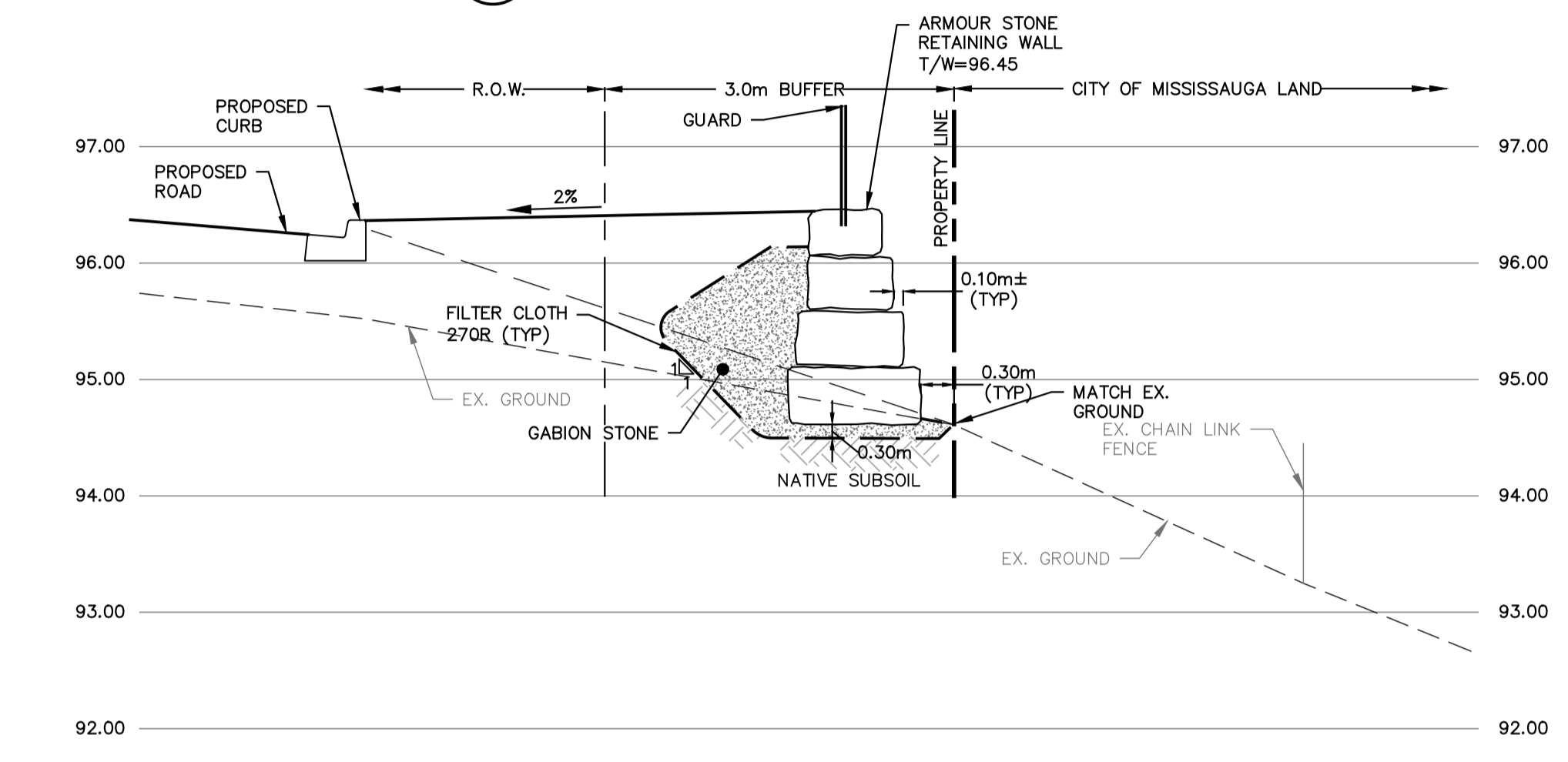


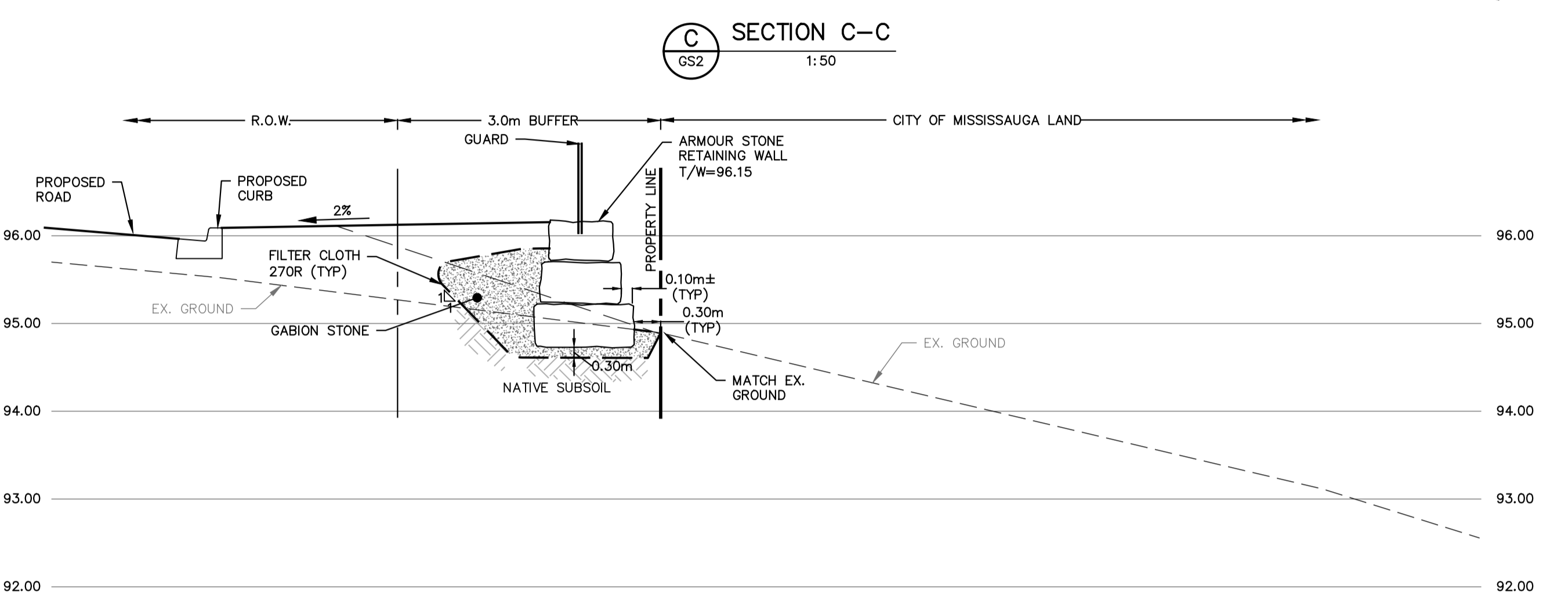
A SECTION A-A
GS2 1:50



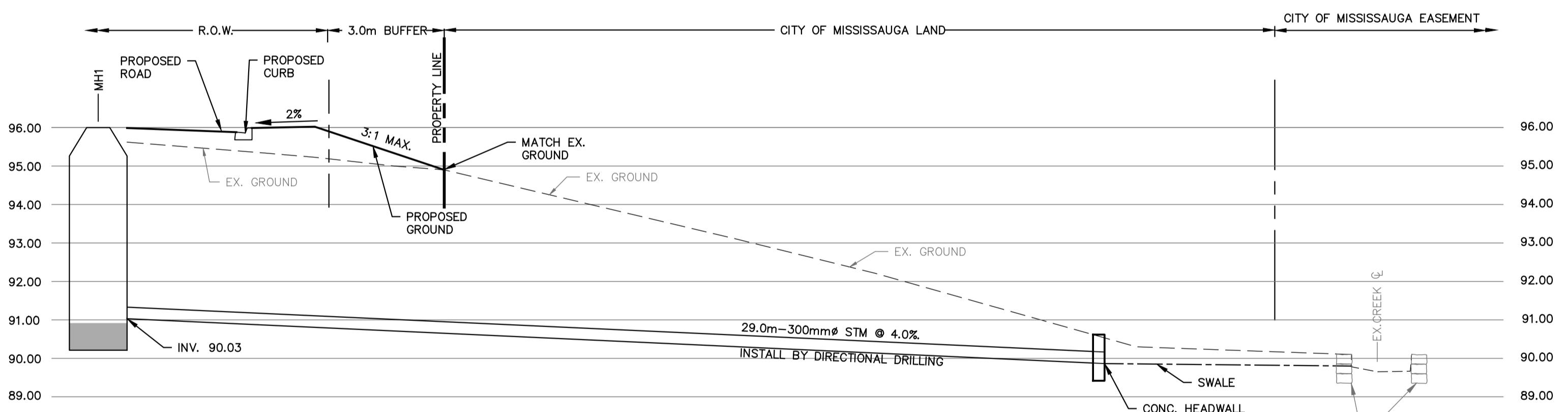
C SECTION C-C
GS2 1:50



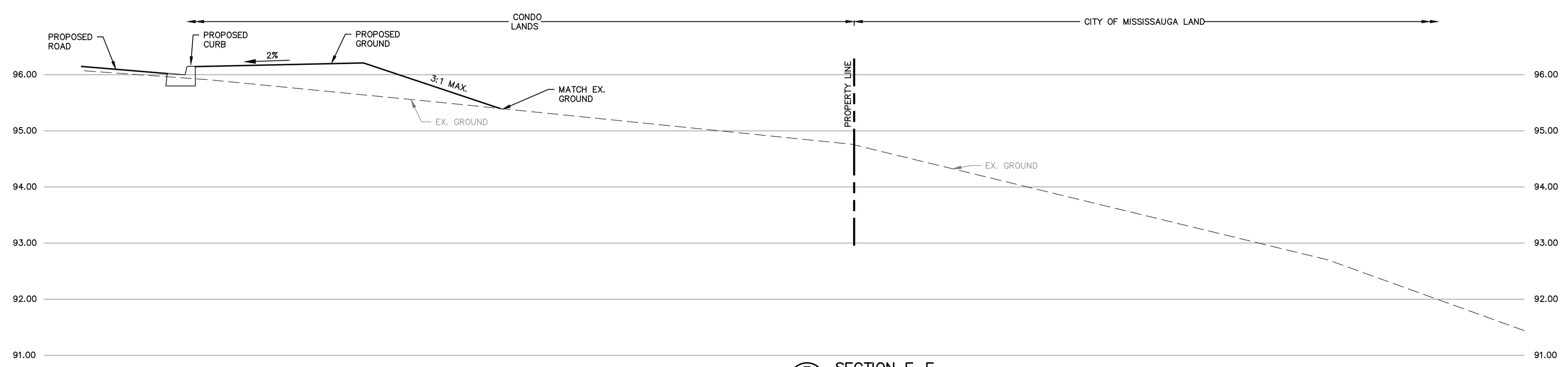
B SECTION B-B
GS2 1:50



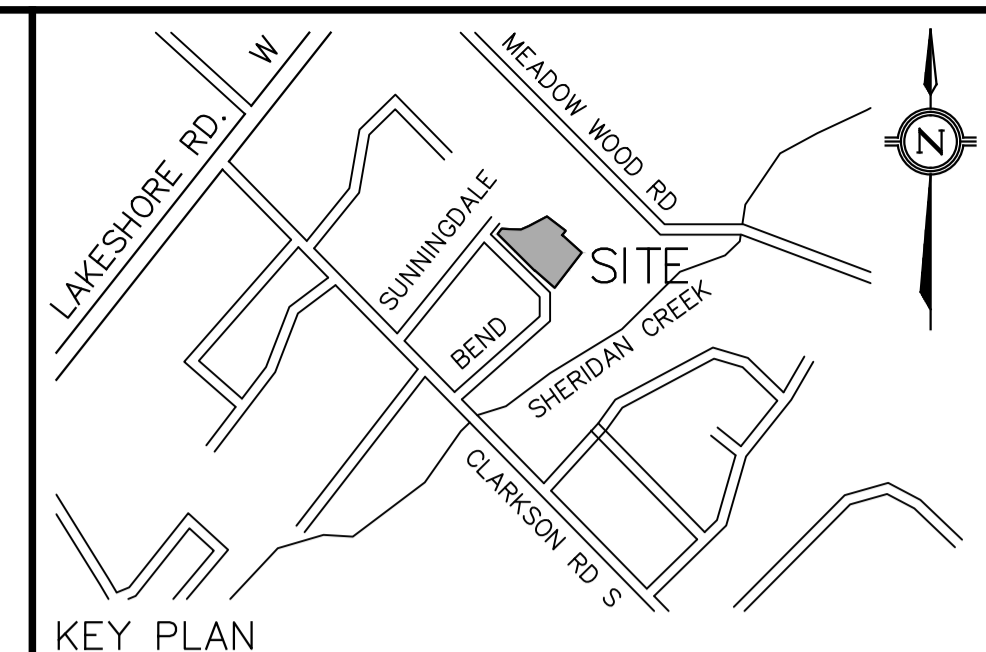
D SECTION D-D
GS2 1:50



E SECTION E-E
GS2 1:100



F SECTION F-F
GS2 1:50



LEGEND

NO.	DATE	BY/DRAWN	REVISIONS
1	21/06/09	SP/ZG	ISSUED

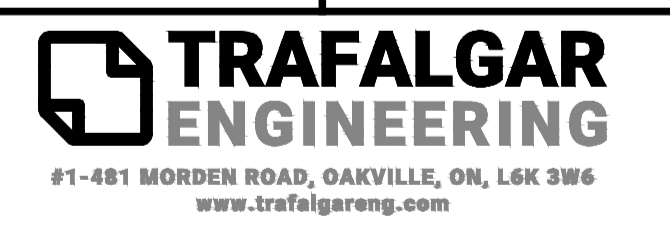
CAD FILE: 1407GS.dwg PLOT SCALE: 1:1 PLOT DATE: Aug 09, 2021

BENCHMARK
ELEVATIONS SHOWN HEREON ARE GEODETIC VERTICAL DATUM-1928, AND WERE DERIVED FROM CITY OF MISSISSAUGA BENCHMARK No. 713, HAVING ELEVATIONS OF 96.649m.

NOTE
EXISTING TOPOGRAPHIC INFORMATION WAS COMPLETED ON THE 20TH DAY OF OCTOBER, 2020 AND PREPARED BY TARASIK McMILLAN LTD. ONTARIO LAND SURVEYORS. File No.4985-20-T



APPROVED BY



PROJECT TITLE
RESIDENTIAL DEVELOPMENT

LOCATION
**1667 SUNNINGDALE BEND
MISSISSAUGA ON**

DRAWING TITLE
SECTIONS

SCALE: 1:50	DESIGN BY: SP	PROJECT No.: 1407
DRAWN BY: ZG	CHECKED BY: SP	PLAN No.: GS2
DATE: 2020/12/15	SHEET: 1 OF 1	