

DEVELOPABLE AREA

2045 HEARTWOOD COURT MISSISSAUGA, ONTARIO

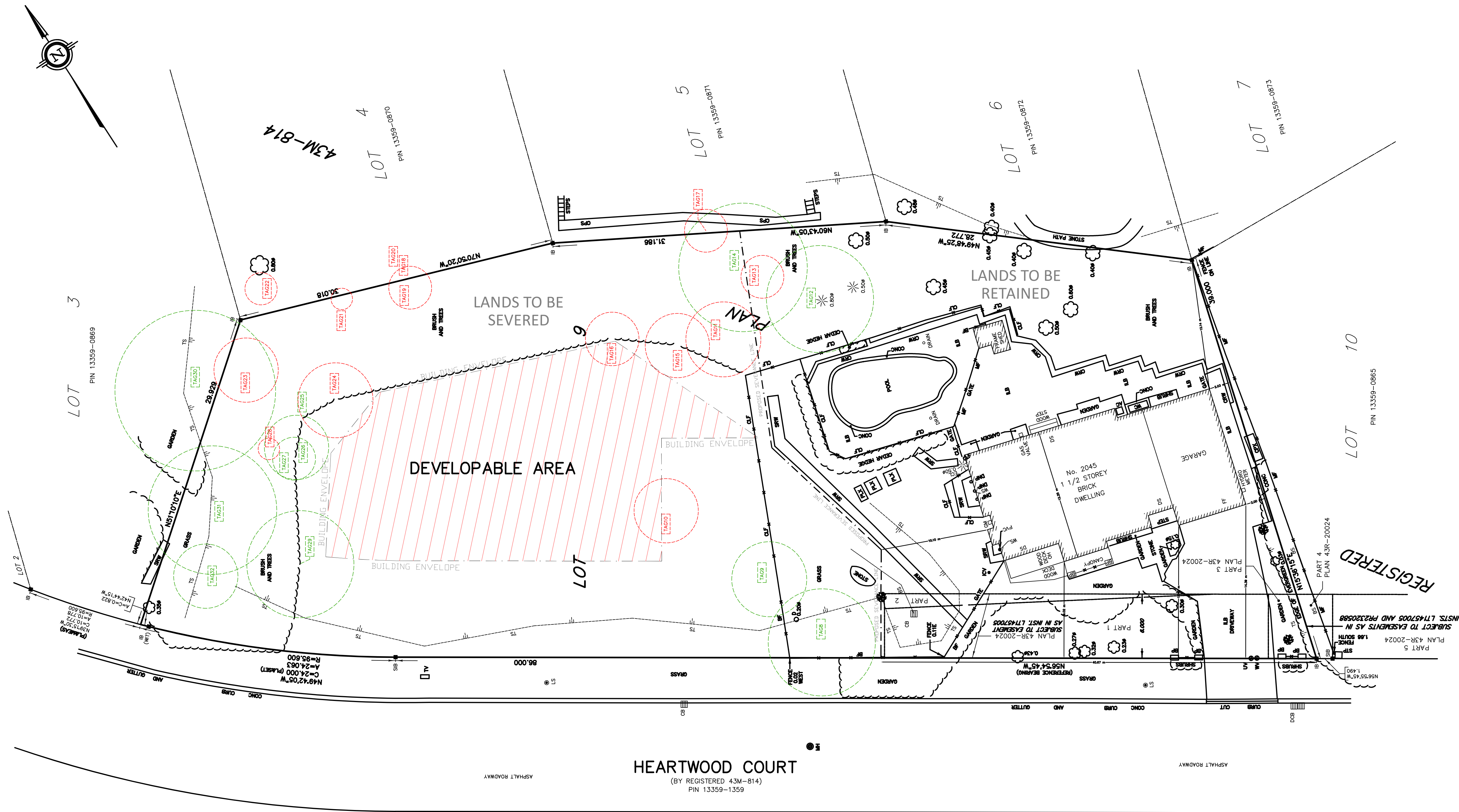
SITE STATISTICS

EXISTING LOT AREA: 3,725.1 m² (0.92 acres, 0.37 ha)

LANDS TO BE RETAINED: 1,639.4 m²

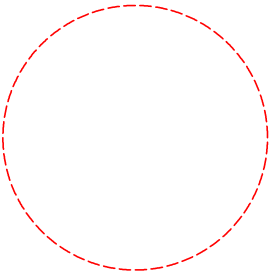
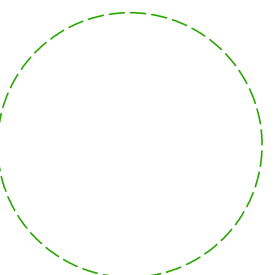
LANDS TO BE SEVERED: 2,085.7 m²

CURRENT ZONING: R1-13



HEARTWOOD COURT
(BY REGISTERED 43M-814)
PIN 13359-1359

LEGEND

-  TREES TO BE REMOVED
-  TREES TO BE PRESERVED

BASE SURVEY INFORMATION FROM:



HOLDING JONES VANDERVEEN INC.
ONTARIO LAND SURVEYORS
1700 LANGSTAFF ROAD, SUITE 1002
VAUGHAN, ON L4K 3S3
PHONE: 905-660-4000 EMAIL: hjv@hvj-ola.ca

NOVEMBER 23/2020 DRAWN BY: J.Y. CHKD. BY: G.V./L.P. JOB NO: 20-2865 SRPR & TOPO

NOTE: DRAWING IS FOR DISCUSSION PURPOSES ONLY

PROJECT FILE NO. 2018_41

SCALE: 1:200

WHEN PRINTED ON 24 X 36

DATE:

DECEMBER 18, 2020

DRAWN BY: S.C.
REVIEWED BY: T.G.



Urban in Mind

WWW.URBANINMIND.CA