



STRYBOS BARRON KING
LANDSCAPE ARCHITECTURE

PARTNERS

BRYN BARRON, OALA, CSLA, ISA
ALISTAIR JOHNSTON, LOHTA, ISA, ASCA
MATHIEU STRYBOS, OALA, CSLA
SALVATORE VIOLA, OALA, CSLA
MATTHEW REGIMBAL, LOHTA, ISA
JOSHUA BEITZ, OALA, CSLA, ISA

ASSOCIATES

ARBORIST REPORT

**PROPOSED RESIDENTIAL DEVELOPMENT
900 MISSISSAUGA HEIGHTS DRIVE
CITY OF MISSISSAUGA**

**PREPARED FOR:
DIAMOND LUXURY GROUP**

**PREPARED BY:
STRYBOS BARRON KING LTD.
5770 HURONTARIO STREET
SUITE 320
MISSISSAUGA, ONTARIO
L5R 3G5**

**REGISTERED CONSULTING ARBORIST
ALISTAIR JOHNSTON
ISA# ON-0586A
OUR PROJECT NO:
5659**

DECEMBER 6, 2021

TABLE OF CONTENTS

Introduction	1
Site Context	1
Plans Utilized	1
Tree Inventory	1
Tree Inventory List	2-3
Tree Removals	4
Table 1- Tree Protection Zones	4
Private Tree Bylaw	4
Discussion	4
Summary of Removals	5-7
Tree Preservation Recommendations	8
Pre-Construction	8
During Construction	8
Post Construction	8
Conclusion	9
Appendix A – Site Photographs	10-11
Appendix B – Tree Preservation & Removal Plan	12
Appendix C – Development Concept Plan	13
Appendix D – Tree Protection Hoarding Detail	14

ARBORIST REPORT
PROPOSED RESIDENTIAL DEVELOPMENT
900 MISSISSAUGA HEIGHTS DRIVE, MISSISSAUGA, ONTARIO

Introduction

Strybos Barron King Ltd. was retained by Diamond Luxury Group to prepare an Arborist Report for the subject property in accordance with the City of Mississauga Tree Bylaw requirements.

Site Context

The subject property (900 Mississauga Heights Drive) is located southeast of Queensway W and Mississauga Heights Drive. The site currently contains an existing two storey residential dwelling with a pool and patio area and four car garage.

Plans Utilized

A topographic plan prepared by David B Searles Limited, an architectural site plan prepared by GSAI, Engineering Plan by Skira and Associates, satellite imagery and a site visit were used to determine the location of the existing trees in relation to the proposed development of four new residential lot and their grading and servicing requirements.

Tree Inventory (Refer to Tree inventory tables found on page 2 and Appendix A-Site Photographs)

Trees were identified by an ISA Certified Arborist both within and immediately adjacent to the subject property. The trees are described in terms of species and diameter at breast height (DBH – measured at 1.4m from grade). They have been assessed in terms of their general health from poor to good; **GOOD** – trees in good overall health and condition with desirable structure, **FAIR** – trees in moderate health and condition with less desirable structure, and **POOR** – trees displaying prominent health issues such as decay and disease and/or poor form and structure. (Refer to *Tree Preservation & Removal Plan* for locations of specific trees.)

Tree Inventory Table Descriptions

Key#	This number refers to inventory number assigned to the tree on the plan.	
Species	The common names are provided for each tree.	
Caliper	This refers to diameter (in centimetres) at breast height and is measured at 1.4m above the ground for each tree.	
Crown	Canopy Width	An estimation of the average diameter of the tree canopy, in metres.
Health	The general assessed health of the tree.	
Structure	This is an assessment of the trees overall form.	
Comments	A general description of each tree's condition and/or pertinent characteristics is provided.	
Direction	This indicates either preservation or removal of the tree (as noted on the plan)	
Min. TPZ	Recommended Tree Preservation Zone (in metres).	

ARBORIST REPORT
PROPOSED RESIDENTIAL DEVELOPMENT
900 MISSISSAUGA HEIGHTS DRIVE, MISSISSAUGA, ONTARIO

EXISTING TREE INVENTORY									
TAG	SPECIES	DBH	CROWN	HEALTH	STRUCTURE	COMMENTS	PRESERVATION	MIN. TPZ	TAG
		IN (cm)	IN (m)	G/F/P			DIRECTION		
235	WHITE ASH	18.0	6.0	DEAD	IRREGULAR FORM	CURVED LEADER, CROWDING BY ADJACENT TREE	REMOVE	-	235
236	RED OAK	51.0	8.0	GOOD	IRREGULAR FORM	CROWDED BY ADJACENT TREES. MINOR DEADWOOD.	REMOVE	-	236
237	COLORADO SPRUCE	13.0	3.0	POOR	FAIR	VERY THIN CANOPY. TREE IN DECLINE	REMOVE	-	237
238	WHITE PINE	64.0	12.0	FAIR	HIGH CROWN	THIN FOLIAGE AT TOP OF CROWN	REMOVE	-	238
239	WHITE PINE	47.5	10.0	GOOD	GOOD FORM	HIGH CROWN	REMOVE	-	239
240	RED OAK	60.0	15.0	GOOD	ONE SIDED FORM	CROWDING BY ADJACENT TREE, HIGH CROWN, MINOR DIEBACK ON LOWER BRANCHES	REMOVE	-	240
241	RED OAK	66.0	15.0	GOOD	ONE SIDED FORM	MATURE, CROWDING BY ADJACENT TREE, CURVED STEM	REMOVE	-	241
242	WHITE PINE	26.0	6.0	GOOD	IRREGULAR FORM	SUBORDINATED BY ADJACENT TREE	REMOVE	-	242
243	WHITE PINE	67.0	13.0	GOOD	ONE SIDED FORM	MATURE, DOUBLE LEADER, HIGH CROWN, MINOR DIEBACK ON LOWER BRANCHES	REMOVE	-	243
244	PAPER BIRCH	24.5-30	8.0	POOR	MULTI-STEMMED	CLUSTER OF THREE STEMS BRANCHING FROM GRADE, SOME CROWN DIEBACK THROUGHOUT	REMOVE	-	244
245	WHITE PINE	44.0	8.0	GOOD	ONE SIDED FORM	CROWDING BY ADJACENT TREE, HIGH CROWN	REMOVE	-	245
246	WHITE PINE	18.0	8.0	GOOD	ONE SIDED FORM	CROWDING BY ADJACENT TREE, HIGH CROWN	REMOVE	-	246
247	WHITE PINE	21.5	7.0	GOOD	GOOD FORM	LOW BRANCHING	REMOVE	-	247
248	WHITE PINE	21.5	6.0	GOOD	GOOD FORM	LOW BRANCHING	REMOVE	-	248
301	CRABAPPLE	24.0	8.0	FAIR	ONE SIDED FORM	CROWDING BY ADJACENT TREE, DIEBACK ON LOWER BRANCHES	REMOVE	-	301
302	CRABAPPLE	23.5	9.0	FAIR	ONE SIDED FORM	CROWDING BY ADJACENT TREE, SUCKER GROWTH THROUGHOUT	REMOVE	-	302
303	CRABAPPLE	14.0	5.0	FAIR	ASYMMETRICAL FORM	SUBORDINATED BY ADJACENT TREES	REMOVE	-	303
304	CRABAPPLE	18.0	6.0	GOOD	ONE SIDED FORM	SUBORDINATED BY ADJACENT TREE, SOME INTERNAL SUCKER GROWTH	REMOVE	-	304
305	WHITE PINE	78.0	19.0	GOOD	ASYMMETRICAL FORM	MATURE, CROWDING BY ADJACENT TREE, LOWER LIMBS SELF PRUNED	REMOVE	-	305
306	WHITE PINE	72.0	13.0	GOOD	ASYMMETRICAL FORM	MATURE, CROWDING BY ADJACENT TREE, MINOR DIEBACK ON LOWER BRANCHES, HIGH CROWN	REMOVE	-	306
307	KENTUCKY COFFEE TREE	18.0	7.0	GOOD	ASYMMETRICAL FORM	SLIGHTLY CROWDING BY ADJACENT TREE	REMOVE	-	307
308	RIVER BIRCH	7-13	7.0	GOOD	MULTI-STEMMED	CLUSTER OF FOUR STEMS SPLIT AT GRADE, MINOR DIEBACK ON LOWER BRANCHES	REMOVE	-	308
309	RIVER BIRCH	13-18	8.0	GOOD	MULTI-STEMMED	CLUSTER OF THREE STEMS SPLIT AT GRADE	REMOVE	-	309
310	DAWN REDWOOD	21.0	7.0	GOOD	GOOD FORM	BRANCHING ALMOST TO GRADE	REMOVE	-	310
311	RIVER BIRCH	9.5-18	8.0	GOOD	MULTI-STEMMED	CLUSTER OF THREE STEMS SPLIT AT GRADE, SOME GIRDLED ROOTS	REMOVE	-	311
312	DAWN REDWOOD	21.0	6.0	GOOD	GOOD FORM	BRANCHING ALMOST TO GRADE	REMOVE	-	312
313	RIVER BIRCH	12.5-14	8.0	GOOD	MULTI-STEMMED	CLUSTER OF THREE STEMS SPLIT AT GRADE	REMOVE	-	313
314	DAWN REDWOOD	15.5	6.0	GOOD	GOOD FORM	BRANCHING ALMOST TO GRADE, MINOR DIEBACK ON LOWER BRANCHES	REMOVE	-	314
315	HAWTHORN	19.0	8.0	GOOD	ASYMMETRICAL FORM	CROWDING BY ADJACENT TREE, DIEBACK ON LOWER BRANCHES	REMOVE	-	315
316	BLACK CHERRY	22.0	9.0	GOOD	ONE SIDED FORM	CROWDING BY ADJACENT TREE, HIGH CROWN, DIEBACK ON LOWER BRANCHES	REMOVE	-	316
317	RED OAK	24.0	7.0	GOOD	ONE SIDED FORM	CROWDING BY ADJACENT TREE, HIGH CROWN, DIEBACK ON LOWER BRANCHES	REMOVE	-	317
318	RED OAK	60.0	17.0	FAIR	ASYMMETRICAL FORM	MATURE, CROWDING BY ADJACENT TREE, DIEBACK ON LOWER BRANCHES, CROWN DIEBACK ON CROWDED SIDE	REMOVE	-	318
319	RED OAK	97.0	25.0	GOOD	CO DOMINANT STEMS	MATURE, BROAD FORM, INCLUDED BARK, HIGH CROWN, MINOR DIEBACK ON LOWER BRANCHES	REMOVE	-	319
320	BUR OAK	35.0	13.0	GOOD	ONE SIDED FORM	CROWDING BY ADJACENT TREE, MINOR DIEBACK ON LOWER BRANCHES	REMOVE	-	320
321	SHAGBARK HICKORY	36.5	17.0	GOOD	ASYMMETRICAL FORM	CROWDING BY ADJACENT TREE, MINOR DIEBACK ON LOWER BRANCHES	REMOVE	-	321
322	COLORADO SPRUCE	28.0	10.0	FAIR	IRREGULAR FORM	COMPLETELY SUBORDINATED BY ADJACENT TREE, GIRDLED ROOTS	REMOVE	-	322
323	SUGAR MAPLE	47.0	13.0	GOOD	CO DOMINANT STEMS	ONE SIDED FORM, CROWDING BY ADJACENT TREE, INCLUDED BARK, GIRDLED ROOTS	REMOVE	-	323
324	RED OAK	65.0	16.0	FAIR	CO DOMINANT LEADERS	ASYMMETRICAL FORM, CROWDING BY ADJACENT TREE, DIEBACK ON LOWER BRANCHES, INSECT DAMAGE ON FOLIAGE, SLIGHT UPPER CROWN DIEBACK	REMOVE	-	324
325	SUGAR MAPLE	29.0	11.0	GOOD	BROAD FORM	LOW BRANCHING	REMOVE	-	325
326	SUGAR MAPLE	38.0	14.0	GOOD	ASYMMETRICAL FORM	CROWDING BY ADJACENT TREE, CO DOMINANT LEADERS	REMOVE	-	326
327	SUGAR MAPLE	51.0	9.0	GOOD	CO DOMINANT STEMS	ONE SIDED FORM, CROWDING BY ADJACENT TREE	REMOVE	-	327
328	WHITE SPRUCE	31.0	6.0	POOR	ONE SIDED FORM	CROWDING BY ADJACENT TREE, DIEBACK ON CROWDED SIDE	REMOVE	-	328
329	HAWTHORN	21-25	10.0	FAIR	DOUBLE STEM	ONE SIDED FORM, CROWDING BY ADJACENT TREE, BASAL DECAY, DECAY AND HALLOWS IN STEMS, DIEBACK ON LOWER BRANCHES	REMOVE	-	329
330	SUGAR MAPLE	53.0	17.0	GOOD	ONE SIDED FORM	MULTIPLE LEADERS, CROWDING BY ADJACENT TREE, INCLUDED BARK	REMOVE	-	330
331	SUGAR MAPLE	49.5	12.0	GOOD	ONE SIDED FORM	CROWDING BY ADJACENT TREE, CO DOMINANT LEADERS	REMOVE	-	331
332	COLORADO BLUE SPRUCE	13.0	4.0	FAIR	GOOD FORM	INTERNAL TWIG TIP DIEBACK ON LOWER BRANCHES	REMOVE	-	332
333	POPLAR	25.0	10.0	GOOD	HIGH CROWN	CROWN CROWDING BY ADJACENT TREE, DIEBACK ON LOWER BRANCHES	REMOVE	-	333
334	DEBORAH NORWAY MAPLE	15.0	6.0	GOOD	GOOD FORM	CROWDING BY ADJACENT TREE	REMOVE	-	334
335	BLACK CHERRY	64.0	13.0	GOOD	GOOD FORM	MATURE, HIGH CROWN, MINOR INTERNAL CROWN DIEBACK THROUGHOUT	REMOVE	-	335
336	DEBORAH NORWAY MAPLE	15.0	6.0	GOOD	GOOD FORM	CROWDING BY ADJACENT TREE	REMOVE	-	336
337	POPLAR	30.0	6.0	GOOD	HIGH CROWN	MINOR DIEBACK ON LOWER BRANCHES	REMOVE	-	337
338	COLORADO BLUE SPRUCE	14.0	5.0	GOOD	GOOD FORM	BRANCHING TO GRADE	REMOVE	-	338
339	POPLAR	25.5	7.0	GOOD	GOOD FORM	REMNANT SECOND STEM REMOVED	REMOVE	-	339
340	WHITE PINE	42.0	10.0	GOOD	GOOD FORM	HIGH CROWN	PRESERVE	3	340
341	WHITE PINE	24.5	5.0	FAIR	NARROW FORM	CROWDING BY ADJACENT TREE, HIGH CROWN.	PRESERVE	1.8	341
342	WHITE PINE	43.5	11.0	GOOD	GOOD FORM	HIGH CROWN	PRESERVE	3	342
343	WHITE PINE	50.0	13.0	GOOD	GOOD FORM	MATURE, BROAD FORM, HIGH CROWN	PRESERVE	3	343
344	WHITE PINE	41.0	9.0	GOOD	ASYMMETRICAL FORM	CROWDING BY ADJACENT TREE, HIGH CROWN, DIEBACK ON LOWER BRANCHES	PRESERVE	3	344
345	WHITE PINE	45.5	10.0	GOOD	ASYMMETRICAL FORM	CROWDING BY ADJACENT TREE, HIGH CROWN	PRESERVE	3	345
346	HAWTHORN	29.5	8.0	GOOD	DOUBLE STEM	ONE SIDED FORM, CROWDING BY ADJACENT TREE	REMOVE	-	346
347	GINKO	14.0	6.0	GOOD	GOOD FORM	CROWDING BY ADJACENT TREE	REMOVE	-	347
348	PAPER BIRCH	22	8.0	FAIR	MULTI-STEMMED	ONE SIDED FORM, CROWDING BY ADJACENT TREE, DIEBACK ON CROWDED SIDE, ONE STEM REMOVED	REMOVE	-	348
349	PAPER BIRCH	17.5	5.0	GOOD	IRREGULAR FORM	CROWDING BY ADJACENT TREE, MINOR SUCKER GROWTH ON STEM, DIEBACK ON LOWER BRANCHES	REMOVE	-	349
350	PAPER BIRCH	15.5-21	11.0	GOOD	DOUBLE STEM	CROWDING BY ADJACENT TREE, ASYMMETRICAL FORM, MINOR SUCKER GROWTH ON STEM	REMOVE	-	350
351	PAPER BIRCH	17.5	8.0	GOOD	ONE SIDED FORM	CROWDED BY ADJACENT TREES. LEANING, HIGH CROWN	REMOVE	-	351
352	PAPER BIRCH	31.0	11.0	GOOD	ASYMMETRICAL FORM	CROWDING BY ADJACENT TREE, HIGH CROWN, MINOR DIEBACK IN UPPER CROWN	REMOVE	-	352
353	PAPER BIRCH	29.0	11.0	GOOD	ASYMMETRICAL FORM	CROWDING BY ADJACENT TREE, LEANING, REMNANT STEM REMOVED AT GRADE	REMOVE	-	353
354	PAPER BIRCH	17-24	11.0	GOOD	ONE SIDED FORM	MULTI-STEMMED, CROWDING BY ADJACENT TREE, SUCKER GROWTH AT BASE	REMOVE	-	354
355	RED OAK	64.5	13.0	GOOD	ASYMMETRICAL FORM	MATURE, CROWDING BY ADJACENT TREE, HIGH CROWN	PRESERVE	4.2	355
356	RED OAK	47.5	12.0	FAIR	ASYMMETRICAL FORM	CROWDING BY ADJACENT TREE, INSECT DAMAGE TO FOLIAGE, DIEBACK IN UPPER AND LOWER CROWN	PRESERVE	3	356
357	NORWAY MAPLE	17.0	7.0	GOOD	ONE SIDED FORM	CROWDING BY ADJACENT TREE	PRESERVE	1.8	357
358	RED OAK	41.0	8.0	FAIR	NARROW FORM	CROWDING BY ADJACENT TREE, SOME DIEBACK IN CROWN	PRESERVE	3	358
359	BUR OAK	26.0	9.0	FAIR	NARROW FORM	CROWDING BY ADJACENT TREE, SOME CROWN DIEBACK AND INSECT DAMAGE	PRESERVE	1.8	359
360	RED OAK	52.0	15.0	GOOD	CO DOMINANT LEADERS	ASYMMETRICAL FORM, CROWDING BY ADJACENT TREE, HIGH CROWN, SOME CROWN DIEBACK	PRESERVE	3.6	360
361	RED OAK	42.0	12.0	FAIR	ASYMMETRICAL FORM	CROWDING BY ADJACENT TREE, DIEBACK IN CROWN	PRESERVE	3	361
362	RED OAK	42.0	12.0	GOOD	IRREGULAR FORM	CROWDING BY ADJACENT TREE, HIGH CROWN, SOME CROWN DIEBACK	PRESERVE	3	362
363	RED OAK	40.0	11.0	GOOD	NARROW FORM	CROWDING BY ADJACENT TREE, HIGH CROWN, STEM VE.	PRESERVE	3	363
364	RED OAK	42.0	20.0	GOOD	ASYMMETRICAL FORM	CROWDING BY ADJACENT TREE, VE., MINOR CROWN DIEBACK	PRESERVE	1.8	364
365	WHITE PINE	27.0	8.0	GOOD	NARROW FORM	HIGH CROWN, CROWDING BY ADJACENT TREE	PRESERVE	1.8	365
366	RED OAK	39.0	9.0	POOR	ONE SIDED FORM	CROWDING BY ADJACENT TREE, LEANING, CONSIDERABLE CROWN DIEBACK	PRESERVE	2.4	366
367	RED OAK	38.0	14.0	FAIR	ONE SIDED FORM	CROWDING BY ADJACENT TREE, LEANING, VE.	PRESERVE	1.8	367
413	SUGAR MAPLE	23.0	11.0	GOOD	ONE SIDED FORM	CROWDING BY ADJACENT TREE, LOW BRANCHING	PRESERVE	1.8	413
414	WHITE OAK	40.0	12.0	GOOD	ONE SIDED FORM	CROWDING BY ADJACENT TREE, LEANING	PRESERVE	2.4	414
415	WHITE OAK	81.0	20.0	GOOD	BROAD FORM	MATURE, OPEN CROWN., CROWDING BY ADJACENT TREE ON NORTH SIDE	PRESERVE	5.4	415
416	SUGAR MAPLE	20.0	10.0	GOOD	ONE SIDED FORM	CROWDING BY ADJACENT TREE	PRESERVE	1.8	416
417	SUGAR MAPLE	35.0	16.0	GOOD	GOOD FORM	SLIGHTLY CROWDING BY ADJACENT TREE	PRESERVE	2.4	417
418	RED OAK	70.0	12.0	POOR	CO DOMINANT LEADER	ONE SIDED FORM, CROWDING BY ADJACENT TREE, LEANING, MASSIVE DECAY IN STEM, UPPER CROWN REDUCTION PRUNING	PRESERVE	4.2	418
419	WHITE OAK	77.0	20.0	GOOD	BROAD FORM	MATURE, CROWDING BY ADJACENT TREE, HIGH CROWN, MINOR DIEBACK IN CROWN	PRESERVE	4.8	419
420	SUGAR MAPLE	31.0	15.0	GOOD	ONE SIDED FORM	CROWDING BY ADJACENT TREE	PRESERVE	2.4	420
421	GREEN ASH	15.0	6.0	DEAD	NARROW FORM	EAB. IN DECLINE.	PRESERVE	1.8	421
422	NORWAY MAPLE	9.0	4.0	GOOD	HIGH CROWN	IN RAVINE. MINOR DEADWOOD. CROWDED BY ADJACENT TREES	PRESERVE	1.2	422
423	NORWAY MAPLE	9.0	4.0	GOOD	HIGH CROWN	IN RAVINE. MINOR DEADWOOD. CROWDED BY ADJACENT TREES	PRESERVE	1.2	423
424	NORWAY MAPLE	20.0	6.0	GOOD	HIGH CROWN	IN RAVINE. MINOR DEADWOOD. CROWDED BY ADJACENT TREES	PRESERVE	1.8	424
425	SUGAR MAPLE	14.0	5.0	GOOD	HIGH CROWN	IN RAVINE. MINOR DEADWOOD. CROWDED BY ADJACENT TREES	PRESERVE	1.8	425
426	SUGAR MAPLE	10.0	5.0	GOOD	HIGH CROWN	IN RAVINE. MINOR DEADWOOD. CROWDED BY ADJACENT TREES	PRESERVE	1.2	426
427	BEECH	32.0	6.0	GOOD	HIGH CROWN	IN RAVINE. MINOR DEADWOOD. CROWDED BY ADJACENT TREES	PRESERVE	2.4	427
428	SUGAR MAPLE	26.0	5.0	GOOD	HIGH CROWN	IN RAVINE. MINOR DEADWOOD. CROWDED BY ADJACENT TREES	PRESERVE	1.8	428
429	SUGAR MAPLE	14.0	6.0	GOOD	HIGH CROWN	IN RAVINE. MINOR DEADWOOD. CROWDED BY ADJACENT TREES	PRESERVE	1.8	429
430	NORWAY MAPLE	10.0	6.0	GOOD	HIGH CROWN	IN RAVINE. MINOR DEADWOOD. CROWDED BY ADJACENT TREES	PRESERVE	1.2	430
431	NORWAY MAPLE	11.0	6.0	GOOD	HIGH CROWN	IN RAVINE. MINOR DEADWOOD. CROWDED BY ADJACENT TREES	PRESERVE	1.8	431
432	NORWAY MAPLE	27.0	6.0	GOOD	HIGH CROWN	IN RAVINE. MINOR DEADWOOD. CROWDED BY ADJACENT TREES	PRESERVE	1.8	432
433	SUGAR MAPLE	28.0	5.0	GOOD	HIGH CROWN	IN RAVINE. MINOR DEADWOOD. CROWDED BY ADJACENT TREES	PRESERVE	1.8	433
434	SUGAR MAPLE	37.0	12.0	GOOD	ASYMMETRICAL FORM	HIGH CROWN, CROWDING BY ADJACENT TREE	PRESERVE	2.4	434
435	WHITE OAK	65.0	15.0	GOOD	HIGH CROWN	OPEN FORM, MINOR UPPER CROWN DIEBACK	PRESERVE	4.2	435
436	NORWAY MAPLE	53.0	20.0	GOOD	BROAD FORM	BASAL DECAY, MAYBE GIRDLED ROOTS, CROWDING BY ADJACENT TREE, MINOR DIEBACK ON LOWER BRANCHES	PRESERVE	3.6	436
437	WHITE PINE	56.0	9.0	GOOD	ONE SIDED FORM	CROWDING BY ADJACENT TREE, HIGH CROWN	PRESERVE	3.6	437
438	WHITE PINE	60.0	7.0	GOOD	ONE SIDED FORM	CROWDING BY ADJACENT TREE, HIGH CROWN, DIEBACK ON LOWER BRANCHES	PRESERVE	3.6	438
439	PAPER BIRCH	26.5	7.0	GOOD	ONE SIDED FORM	CROWDING BY ADJACENT TREE, SUCKER GROWTH ON STEM	PRESERVE	1.8	439
440	PAPER BIRCH	21.0	6.0	GOOD	ONE SIDED FORM	CROWDING BY ADJACENT TREE, MINOR DIEBACK ON LOWER BRANCHES	PRESERVE	1.8	440
441	PAPER BIRCH	25.0	7.0	GOOD	ONE SIDED FORM	CROWDING BY ADJACENT TREE, MINOR TWIG TIP DIEBACK	PRESERVE	1.8	441
442	PAPER BIRCH	15.0	4.0	GOOD	ONE SIDED FORM	SUBORDINATED BY ADJACENT TREE	PRESERVE	1.8	442
443	PAPER BIRCH	23.0	6.0	GOOD	ONE SIDED FORM	CROWDING BY ADJACENT TREE	PRESERVE	1.8	443
444	PAPER BIRCH	23.0	7.0	GOOD	ONE SIDED FORM	CROWDING BY ADJACENT TREE	PRESERVE	1.8	444
445	PAPER BIRCH	20.5	6.0	GOOD	NARROW FORM	CROWDING BY ADJACENT TREE, HIGH CROWN	PRESERVE	1.8	445
446	PAPER BIRCH	18.0	5.0	GOOD	NARROW FORM	CROWDING BY ADJACENT TREE, BASAL DECAY, DIEBACK ON LOWER BRANCHES	PRESERVE	1.8	446
447	PAPER BIRCH	16.0	5.0	GOOD	ONE SIDED FORM	CROWDING BY ADJACENT TREE, LOW BRANCHING	PRESERVE	1.8	447
448	WHITE PINE	73.0	10.0	GOOD	GOOD FORM	HIGH CROWN	PRESERVE	4.8	448
449	WHITE PINE	50.0	7.0	GOOD	NARROW FORM	CROWDING BY ADJACENT TREE, HIGH CROWN	PRESERVE	3	449
450	SUGAR MAPLE	24.0	10.0	GOOD	GOOD FORM	CROWDING BY ADJACENT TREE, LOW BRANCHING	PRESERVE	1.8	450
451	WHITE OAK	47.0	12.0	GOOD	NARROW FORM	CROWDING BY ADJACENT TREE, HIGH CROWN, SUCKER GROWTH ALONG STEM	PRESERVE	3	451
452	BLACK CHERRY	39.0	7.0	GOOD	DOUBLE STEM	NARROW FORM, CROWDING BY ADJACENT TREE, HIGH CROWN	PRESERVE	2.4	452
455	WHITE PINE	25.0	9.0	GOOD	ONE SIDED FORM	CROWDING BY ADJACENT TREE	PRESERVE	1.8	455
456	SUGAR MAPLE	26.0	15.0	GOOD	ASYMMETRICAL FORM	CROWDING BY ADJACENT TREE, LOW BRANCHING	PRESERVE	1.8	456
457	GREEN ASH	33.0		DEAD	DEAD	DEAD	PRESERVE	1.2	457
458	RED OAK	27.0	7.0	FAIR	NARROW FORM	HIGH CROWN, CROWDING BY ADJACENT TREE, DIEBACK IN CROWN	PRESERVE	1.8	458
459	WHITE PINE	24.0	6.0	FAIR	IRREGULAR FORM	CROWDING BY ADJACENT TREE,	PRESERVE	1.8	459
460	WHITE PINE	23.5	8.0	FAIR	ASYMMETRICAL FORM	CROWDING BY ADJACENT TREE,	PRESERVE		

479	WHITE PINE	67.0	12.0	GOOD	ASYMMETRICAL FORM	MATURE, CROWDING BY ADJACENT TREE, MINOR DIEBACK ON LOWER BRANCHES	PRESERVE	4.2	479
480	WHITE SPRUCE	61.0	10.0	FAIR	GOOD FORM	SHADED BY ADJACENT TREES, DIEBACK ALONG SHADED STEM	PRESERVE	4.2	480
481	WHITE PINE	54.0	12.0	GOOD	ONE SIDED FORM	CROWDING BY ADJACENT TREE, HIGH CROWN	PRESERVE	3.6	481
482	SHAGBARK HICKORY	27.0	11.0	GOOD	NARROW FORM	CROWDING BY ADJACENT TREE, HIGH CROWN	PRESERVE	1.8	482
483	WHITE SPRUCE	26.0	6.0	FAIR	NARROW FORM	CROWDING BY ADJACENT TREE, DIEBACK IN SHADED OUT AREAS	PRESERVE	1.8	483
484	NORWAY MAPLE	18.0	7.0	GOOD	ASYMMETRICAL FORM	CROWDING BY ADJACENT TREE	PRESERVE	1.8	484
485	NORWAY MAPLE	20.0	9.0	GOOD	IRREGULAR FORM	ONE SIDED FORM, CROWDING BY ADJACENT TREE, CURVED STEM	PRESERVE	1.8	485
486	WHITE PINE	76.0	16.0	GOOD	BROAD FORM	MATURE, HIGH CROWN, CROWDING BY ADJACENT TREE	PRESERVE	4.8	486
487	NORWAY MAPLE	25.0	15.0	GOOD	ASYMMETRICAL FORM	CROWDING BY ADJACENT TREE	PRESERVE	1.8	487
488	WHITE PINE	62.0	13.0	GOOD	ASYMMETRICAL FORM	MATURE, HIGH CROWN, CROWDING BY ADJACENT TREE	PRESERVE	4.2	488
489	RED OAK	38.5-42	12.0	GOOD	DOUBLE STEM	ASYMMETRICAL FORM, CROWDING BY ADJACENT TREE	PRESERVE	3	489
490	SHAGBARK HICKORY	22.5	8.0	GOOD	NARROW FORM	CROWDING BY ADJACENT TREE, HIGH CROWN	PRESERVE	1.8	490
491	SCOTS PINE	35.5	9.0	FAIR	HIGH CROWN	CROWDING BY ADJACENT TREE, DIEBACK THROUGHOUT CROWDED PARTS, SOME CROWN DIEBACK	PRESERVE	2.4	491
492	SCOTS PINE	29.5	6.0	DEAD	NARROW FORM	DEAD	REMOVE	-	492
493	WHITE OAK	45.0	11.0	POOR	ONE SIDED FORM	CROWDING BY ADJACENT TREE, HIGH CROWN, DIEBACK THROUGHOUT CROWN	REMOVE	-	493
494	WHITE SPRUCE	25.0	6.0	POOR	NARROW FORM	CROWDING BY ADJACENT TREE, VE., DIEBACK THROUGHOUT	REMOVE	-	494
495	SHAGBARK HICKORY	31.0	10.0	GOOD	HIGH CROWN	CROWDING BY ADJACENT TREE	REMOVE	-	495
496	NORWAY MAPLE	25.0	8.0	GOOD	ASYMMETRICAL FORM	CROWDING BY ADJACENT TREE	REMOVE	-	496
497	WHITE PINE	75.0	8.0	FAIR	NARROW FORM	MATURE, DIE BACK ON LOWER BRANCHES. TWIG TIP DIEBACK IN UPPER CROWN, HIGH CROWN	REMOVE	-	497
498	SHAGBARK HICKORY	17.5	7.0	GOOD	ONE SIDED FORM	CROWDING BY ADJACENT TREE	REMOVE	-	498
499	NORWAY MAPLE	22.0	6.0	GOOD	IRREGULAR FORM	CROWDED BY ADJACENT TREES. MINOR DEADWOOD	REMOVE	-	499
500	NORWAY MAPLE	17.5	7.0	GOOD	ASYMMETRICAL FORM	CROWDING BY ADJACENT TREE	REMOVE	-	500
1755	Red oak (372)	56-66	17	Good	Double Stem	MATURE, ONE SIDED FORM, CROWDING BY ADJACENT TREES, INLCUED BARK, HIGH CROWN, OPEN FORM	PRESERVE	4.2	1755
1756	White pine (371)	23	7	Good	One sided form	CROWDING BY ADJACENT TREE, LOW BRANCHING	PRESERVE	1.8	1756
1757	Red oak (370)	38	11	Good	One sided form	CROWDING BY ADJACENT TREE, HIGH CROWN	PRESERVE	2.4	1757
1758	White pine (369)	26	7	Good	Good form	LOW BRANCHING, CROWDING BY ADJACENT TREE, MINOR DIEBACK ON LOWER BRANCHES	PRESERVE	1.8	1758
1759	White pine (368)	60	8	Good	Good form	CROWDING BY ADJACENT TREE, HIGH CROWN	PRESERVE	3.6	1759
1760	White oak	23	6	Fair	Single stem, Oblong form	DEADWOOD IN CROWN, CROWDED BY ADJACENT TREE	PRESERVE	1.8	1760
1761	White pine	29	5	Fair	Single stem, Narrow form	DEADWOOD IN CROWN, THIN CANOPY	PRESERVE	1.8	1761
1762	White pine (374)	57	5	Poor	Asymmetrical form	CROWDING BY ADJACENT TREE, COVERED IN VINES, TREE IN DECLINE	PRESERVE	3.6	1762
1763	Shagbak hickory (375)	29	5	Good	High crown	CROWDED BY ADJACENT TREE, MINOR DEADWOOD	PRESERVE	1.8	1763
1764	Red oak (376)	18	5	Good	High crown	CROWDED BY ADJACENT TREE, MINOR DEADWOOD	PRESERVE	1.8	1764
1765	White pine (373)	44.5	8	Good	Asymmetrical form	PREVIOUSLY NOT TAGGED, ONESIDED, CROWDED BY ADJACENT TREES, DEADWOOD IN CROWN	PRESERVE	3	1765
1766	Ironwood (377)	20-23	10	Good	Double Stem	ONESIDED FORM, CROWDING BY ADJACENT TREES, MINOR DECAY IN STEM UNION	PRESERVE	1.8	1766
1767	Red oak (378)	38	6	Good	High crown	MINOR DEADWOOD, CROWDED BY ADJACENT TREES	PRESERVE	2.4	1767
1768	White pine	40	6	Fair	Single stem, Narrow form	DEADWOOD IN LOW CROWN, CROWDED BY ADJACENT TREES	PRESERVE	2.4	1768
1769	Black cherry	34	5	Fair	Double stem, Narrow form	INCLUDED BARK, ONE STEM DEAD	PRESERVE	2.4	1769
1770	Red oak	31	6	Fair	Single stem, Narrow form	CROWDED BY ADJACENT TREE	PRESERVE	2.4	1770
1771	Black cherry	17	3	Fair	Single stem, Asymmetrical form	ONE SIDED, SUCKER GROWTH	PRESERVE	1.8	1771
1772	Red oak	55	11	Fair	Single stem	45 DEGREE LEAN, NATURALIZED, ONESIDED	PRESERVE	3.6	1772
1773	Red oak	62	11	Fair	Single stem, Round form	MINOR DEADWOOD IN CROWN, ROUND FORM	PRESERVE	4.2	1773
1774	Sugar maple	17	3	Fair	Single stem, Round form	DEADWOOD IN CROWN	PRESERVE	1.8	1774
1775	Sugar maple	13	3	Fair	Single stem	UNDERSTORY, CROWDED BY ADJACENT TREES, ASYMMETRICAL CROWN	PRESERVE	1.8	1775
1776	White pine	22	3	Poor	Single stem	CROWDED BY ADJACENT TREES, NATURALIZED, DEADWOOD IN CROWN	PRESERVE	1.8	1776
1777	Red oak (381)	34	6	Good	One sided form	CROWDED BY ADJACENT TREES, MINOR DEADWOOD, HIGH CROWN	PRESERVE	2.4	1777
1778	Red oak (379)	66	15	Good	Asymmetrical form	CROWDING BY ADJACENT TREES, CO DOMINANT LEADERS, MINOR DIEBACK ON LOWER BRANCHES	PRESERVE	4.2	1778
1779	Red oak (380)	43	15	Good	One sided form	CROWDING BY ADJACENT TREES, MINOR SUCKER GROWTH ALONG STEM	PRESERVE	3	1779
1780	Black oak (384)	23-65	16	Good	Double leader	CROWDING BY ADJACENT TREES, LOWER LIMBS PRUNED, SOME CROWN DIEBACK, DEAD LEADER THROUGHOUT	PRESERVE	4.2	1780
1781	Black oak (385)	48	12	Fair	One sided form	CROWDING BY ADJACENT TREES, SUCKER GROWTH THROUGHOUT CROWN, MINOR DIEBACK THROUGHOUT	PRESERVE	3	1781
1782	Sugar maple	14	2	Fair	Single stem	CROWDED BY ADJACENT TREES, ROUND CROWN	PRESERVE	1.8	1782
1783	Sugar maple	24	6	Fair	Single stem	PREVIOUSLY NOT TAGGED, DEADWOOD IN CROWN, CROWDED BY ADJACENT TREES, ROUND CROWN	PRESERVE	1.8	1783
1784	White pine	37	3	Fair	Single stem, Asymmetrical form	PREVIOUSLY NOT TAGGED, ONE SIDED, DEADWOOD IN CROWN	PRESERVE	2.4	1784
1785	Red oak (383)	33	6	Good	One sided form	CROWDED BY ADJACENT TREES, MINOR DEADWOOD, HIGHCROWN	PRESERVE	2.4	1785
1786	Sugar maple	22	6	Fair	Single stem	PREVIOUSLY NOT TAGGED, HANGER IN CROWN, DENSE CANOPY,CROWDED BY ADJACENT TREES	PRESERVE	1.8	1786
1787	White pine	33	3	Fair	Single stem	LOWER DEADWOOD IN CROWN	PRESERVE	2.4	1787
1788	Norway maple (382)	34	6	Good	One sided form	CROWDED BY ADJACENT TREES, MINOR DEADWOOD, HIGH CROWN	PRESERVE	2.4	1788
1789	Ironwood	15	4	Fair	Single stem	ONE SIDED, DEADWOOD IN CROWN, NATURALIZED	PRESERVE	1.8	1789
1790	Ironwood	11	4	Fair	Single stem, Pyramidal form	DEADWOOD IN CROWN, NATURALIZED	PRESERVE	1.8	1790
1791	Ironwood	11	3	Fair	Single stem	ONE SIDED, CROWDED BY ADJACENT TREES	PRESERVE	1.8	1791
1792	Red oak	49	12	Fair	Single stem	GYPSY MOTH, DEADWOOD IN CROWN	PRESERVE	3	1792
1793	Ironwood	13	3	Fair	Single stem	CROWDED BY ADJACENT TREES, TOP OF CROWN IS DEAD	PRESERVE	1.8	1793
1794	Ironwood	14	3	Poor	Single stem	CROWDED BY ADJACENT TREES, TOP CROWN IS DEAD	PRESERVE	1.8	1794
1795	White oak	23	3	Fair	Single stem	CROWDED BY ADJACENT TREES, DEADWOOD IN CROWN	PRESERVE	1.8	1795
1796	Red oak	29	6	Fair	Single stem	HANGER IN CROWN, SYMMETRICAL CROWN, THIN CANOPY	PRESERVE	1.8	1796
1797	Ironwood	11	2	Fair	Single stem, Pyramidal form	DEADWOOD IN CROWN, NATURALIZED	PRESERVE	1.8	1797
1798	Sugarmaple	26	5	Fair	Single stem, Oblong form	DENSE CANOPY, DEADWOOD IN CROWN	PRESERVE	1.8	1798
1799	Red oak	46	5	Poor	Single stem, Leaning	CAVITY AT BASE	PRESERVE	3	1799
1800	Red oak	53, 51	11	Fair	Double stem	INCLUDED BARK, THIN CANOPY, HANGER IN CROWN	PRESERVE	3.6	1800
1801	Ironwood	13	2	Fair	Single stem, Round form	HANGER IN CROWN, THIN CANOPY, NATURALIZED	PRESERVE	1.8	1801
1802	White pine	63	6	Fair	Single stem, Oblong form	LEANING, DEADWOOD IN CROWN	PRESERVE	4.2	1802
1803	Black cherry	14	3	Fair	Single stem	CROWDED BY ADJACENT TREES, HANGER IN CROWN, DEADWOOD IN CROWN, ROUND CROWN	PRESERVE	1.8	1803
1804	Red oak (405)	29	6	Good	Irregular form	HIGH CROWN, CROWDED BY ADJACENT TREES, MINOR DEADWOOD	PRESERVE	1.8	1804
1805	Red oak	15, 10	3	Fair	Single stem	CROWDED BY ADJACENT TREES, THIN CANOPY	PRESERVE	1.8	1805
1806	Ironwood	12	5	Fair	Single stem	NATURALIZED, OBLONG CROWN, DEADWOOD IN CROWN	PRESERVE	1.8	1806
1807	Ironwood	11	4	Fair	Single stem	NATURALIZED, ONE SIDED, HANGER IN CROWN	PRESERVE	1.8	1807
1808	Ironwood	13	3	Fair	Single stem	PYRAMIDAL CROWN, UNDERSTORY	PRESERVE	1.8	1808
1809	Red oak	10	2	Fair	Single stem	ROUND CROWN, THIN CANOPY	PRESERVE	1.8	1809
1810	Black cherry	20	3	Fair	Single stem	ASYMMETRICAL, CROWDED BY ADJACENT TREES, ONE SIDED	PRESERVE	1.8	1810
1811	White pine(403)	33	5	Fair	High crown	THIN CANOPY, MINOR DEADWOOD, CROWDED BY ADJACENT TREES	PRESERVE	2.4	1811
1812	White pine (402)	43	5	Fair	High crown	THIN CANOPY, MINOR DEADWOOD, CROWDED BY ADJACENT TREES	PRESERVE	3	1812
1813	White pine (404)	50	5	Fair	High crown	THIN CANOPY, MINOR DEADWOOD, CROWDED BY ADJACENT TREES	PRESERVE	3	1813
1814	White pine (401)	37	5	Fair	High crown	THIN CANOPY, MINOR DEADWOOD, CROWDED BY ADJACENT TREES	PRESERVE	2.4	1814
1815	Iron wood	12	3	Poor	Single stem	DEADWOOD IN CROWN, HANGER IN CROWN, THIN CANOPY, CROWDED BY ADJACENT TREES	PRESERVE	1.8	1815
1816	White pine	14,15	5	Fair	Double stem, Broad form	DEADWOOD IN CROWN, UNDERSTORY	PRESERVE	1.8	1816
1817	Red oak	69, 70	12	Poor	Double stem	INCLUDED BARK AT BASE, DECAY AT BASE, PREVIOUS TOP BROKE OFF, LARGE DEADWOOD	PRESERVE	4.2	1817
1818	Sugar maple	18	6	Fair	Single stem, Round form	CROWDED BY ADJACENT TREES, ONESIDED, DEADWOOD IN CROWN	PRESERVE	1.8	1818
1819	Red oak (399)	27	9	Good	Asymmetrical form	CROWDED BY ADJACENT TREES, HIGH CROWN	PRESERVE	1.8	1819
1820	Red oak (400)	38	13	Good	One sided form	CROWDING BY ADJACENT TREES, MINOR DIEBACK ON LOWER BRANCHES	PRESERVE	2.4	1820
1821	Red oak	12	1	Fair	Single stem	DEADWOOD IN CROWN, CROWDED BY ADJACENT TREES, UNDERSTORY	PRESERVE	1.2	1821
1822	White pine (406)	44	12	Good	Narrow form	CROWDING BY ADJACENT TREE, MINOR DIEBACK ON LOWER BRANCHES	PRESERVE	3	1822
1823	Sugar maple	17	5	Fair	Single stem	ROUND CROWN,	PRESERVE	1.8	1823
1824	White pine (409)	30	7	Good	One sided form	SUBORDINATED BY ADJACENT TREE	PRESERVE	2.4	1824
1825	Red oak	20	5	Fair	Single stem	OBLONG CROWN, DEADWOOD IN CROWN	PRESERVE	1.8	1825
1826	Sugar maple	10	2	Fair	Single stem	CROWDED BY ADJACENT TREES, ONE SIDED CROWN	PRESERVE	1.2	1826
1827	Red oak (410)	55	11	Fair	Irregular form	CROWDING BY ADJACENT TREE, LEANING, MINOR CROWN DIEBACK	PRESERVE	3.6	1827
1828	Red oak	49, 70	12	Fair	Double stem	HANGERS IN CROWN, DEADWOOD IN CROWN	PRESERVE	4.2	1828
1829	Black cherry	26	3	Fair	Single stem	DEADWOOD IN CROWN, ASYMMETRICAL FORM	PRESERVE	1.8	1829
1830	Red oak	50	8	Fair	Single stem	LEANING TOWARDS RAVINE, DEADWOOD IN CROWN, DENSE CANOPY	PRESERVE	3	1830
1831	Sugar maple	12	2	Fair	Single stem	NARROW FORM	PRESERVE	1.8	1831
1832	Red oak (412)	23	11	Fair	Narrow form	MINOR DIEBACK AND SUCKER GROWTH THROUGHOUT	PRESERVE	1.8	1832

ARBORIST REPORT
PROPOSED RESIDENTIAL DEVELOPMENT
900 MISSISSAUGA HEIGHTS DRIVE, MISSISSAUGA, ONTARIO

Tree Removals (Refer to Appendix B – Tree Preservation and Removal Plan)

In determining the tree preservation possibilities for the site several factors were considered as noted below:

- Overall tree health, form, size, species and predicated longevity.
- Anticipated impact from construction of buildings and proposed landscape features, road works, site servicing and grading.

Each tree was assigned a minimum Tree Preservation Zone (TPZ) as per standard requirements used by municipal by-laws. See table 1.

Table 1 - Tree Protection Zones

<i>Trunk Diameter (DBH)</i>	<i>Minimum Protection Zone</i>
<10 cm	1.2m
10-29 cm	1.8 m
30-40 cm	2.4 m
41-50 cm	3.0 m
51-60 cm	3.6 m
61-70 cm	4.2 m
71-80 cm	4.8 m
81-90 cm	5.4 m
91-100 cm	6.0 m
< 100 cm	6cm per 1cm DBH

Trees are recommended for preservation or removal based on proximity of the TPZ to the limit of construction, in conjunction with the overall tree health, size and anticipated ability to withstand root or crown impacts.

Private Tree By-Law

The City of Mississauga's Private Tree By-law governs all trees found on private property of 15cm DBH (Diameter at Breast Height) or greater.

The By-law states that:

- A permit is required to remove **three (3) or more trees** with a diameter greater than 15 cm (6 in) within one calendar year
- A permit is not required to remove up to **two (2) trees** of any diameter per calendar year
- A permit is required to remove three (3) or more dead, dying or hazardous trees with a diameter greater than 15 cm (6 in) within one calendar year

Discussion

The existing house siting allows for the preservation of the majority of the mature trees within the side yards adjacent to the house. The limits of the proposed four additional lots will lead to the removal of seventy-one trees (71). Refer to the Development Concept Plan in Appendix C. A permit is required to satisfy the tree removals. Seven (7) trees to be removed are less than 15cm.

ARBORIST REPORT
 PROPOSED RESIDENTIAL DEVELOPMENT
 900 MISSISSAUGA HEIGHTS DRIVE, MISSISSAUGA, ONTARIO
 SUMMARY OF REMOVALS

5

TAG	SPECIES	DBH	CROWN	HEALTH	STRUCTURE	COMMENTS	PRESERVATION	MIN. TPZ	TAG
		IN (cm)	IN (m)	G/F/P			DIRECTION		
235	WHITE ASH	18.0	6.0	DEAD	IRREGULAR FORM	CURVED LEADER, CROWDING BY ADJACENT TREE	REMOVE	-	235
236	RED OAK	51.0	8.0	GOOD	IRREGULAR FORM	CROWDED BY ADJACENT TREES. MINOR DEADWOOD.	REMOVE	-	236
237	COLORADO SPRUCE	13.0	3.0	POOR	FAIR	VERY THIN CANOPY. TREE IN DECLINE	REMOVE	-	237
238	WHITE PINE	64.0	12.0	FAIR	HIGH CROWN	THIN FOLIAGE AT TOP OF CROWN	REMOVE	-	238
239	WHITE PINE	47.5	10.0	GOOD	GOOD FORM	HIGH CROWN	REMOVE	-	239
240	RED OAK	60.0	15.0	GOOD	ONE SIDED FORM	CROWDING BY ADJACENT TREE, HIGH CROWN, MINOR DIEBACK ON LOWER BRANCHES	REMOVE	-	240
241	RED OAK	66.0	15.0	GOOD	ONE SIDED FORM	MATURE, CROWDING BY ADJACENT TREE, CURVED STEM	REMOVE	-	241
242	WHITE PINE	26.0	6.0	GOOD	IRREGULAR FORM	SUBORDINATED BY ADJACENT TREE	REMOVE	-	242
243	WHITE PINE	67.0	13.0	GOOD	ONE SIDED FORM	MATURE, DOUBLE LEADER, HIGH CROWN, MINOR DIEBACK ON LOWER BRANCHES	REMOVE	-	243
244	PAPER BIRCH	24.5-30	8.0	POOR	MULTI-STEMMED	CLUSTER OF THREE STEMS BRANCHING FROM GRADE, SOME CROWN DIEBACK THROUGHOUT	REMOVE	-	244
245	WHITE PINE	44.0	8.0	GOOD	ONE SIDED FORM	CROWDING BY ADJACENT TREE, HIGH CROWN	REMOVE	-	245
246	WHITE PINE	18.0	8.0	GOOD	ONE SIDED FORM	CROWDING BY ADJACENT TREE, HIGH CROWN	REMOVE	-	246
247	WHITE PINE	21.5	7.0	GOOD	GOOD FORM	LOW BRANCHING	REMOVE	-	247
248	WHITE PINE	21.5	6.0	GOOD	GOOD FORM	LOW BRANCHING	REMOVE	-	248
301	CRABAPPLE	24.0	8.0	FAIR	ONE SIDED FORM	CROWDING BY ADJACENT TREE, DIEBACK ON LOWER BRANCHES	REMOVE	-	301
302	CRABAPPLE	23.5	9.0	FAIR	ONE SIDED FORM	CROWDING BY ADJACENT TREE, SUCKER GROWTH THROUGHOUT	REMOVE	-	302
303	CRABAPPLE	14.0	5.0	FAIR	ASYMMETRICAL FORM	SUBORDINATED BY ADJACENT TREES	REMOVE	-	303
304	CRABAPPLE	18.0	6.0	GOOD	ONE SIDED FORM	SUBORDINATED BY ADJACENT TREE, SOME INTERNAL SUCKER GROWTH	REMOVE	-	304
305	WHITE PINE	78.0	19.0	GOOD	ASYMMETRICAL FORM	MATURE, CROWDING BY ADJACENT TREE, LOWER LIMBS SELF PRUNED	REMOVE	-	305
306	WHITE PINE	72.0	13.0	GOOD	ASYMMETRICAL FORM	MATURE, CROWDING BY ADJACENT TREE, MINOR DIEBACK ON LOWER BRANCHES, HIGH CROWN	REMOVE	-	306
307	KENTUCKY COFFEE TREE	18.0	7.0	GOOD	ASYMMETRICAL FORM	SLIGHTLY CROWDING BY ADJACENT TREE	REMOVE	-	307
308	RIVER BIRCH	7-13	7.0	GOOD	MULTI-STEMMED	CLUSTER OF FOUR STEMS SPLIT AT GRADE, MINOR DIEBACK ON LOWER BRANCHES	REMOVE	-	308
309	RIVER BIRCH	13-18	8.0	GOOD	MULTI-STEMMED	CLUSTER OF THREE STEMS SPLIT AT GRADE	REMOVE	-	309

ARBORIST REPORT
 PROPOSED RESIDENTIAL DEVELOPMENT
 900 MISSISSAUGA HEIGHTS DRIVE, MISSISSAUGA, ONTARIO
 SUMMARY OF REMOVALS

6

310	DAWN REDWOOD	21.0	7.0	GOOD	GOOD FORM	BRANCHING ALMOST TO GRADE	REMOVE	-	310
311	RIVER BIRCH	9.5-18	8.0	GOOD	MULTI-STEMMED	CLUSTER OF THREE STEMS SPLIT AT GRADE, SOME GIRDLED ROOTS	REMOVE	-	311
312	DAWN REDWOOD	21.0	6.0	GOOD	GOOD FORM	BRANCHING ALMOST TO GRADE	REMOVE	-	312
313	RIVER BIRCH	12.5-14	8.0	GOOD	MULTI-STEMMED	CLUSTER OF THREE STEMS SPLIT AT GRADE	REMOVE	-	313
314	DAWN REDWOOD	15.5	6.0	GOOD	GOOD FORM	BRANCHING ALMOST TO GRADE, MINOR DIEBACK ON LOWER BRANCHES	REMOVE	-	314
315	HAWTHORN	19.0	8.0	GOOD	ASYMMETRICAL FORM	CROWDING BY ADJACENT TREE, DIEBACK ON LOWER BRANCHES	REMOVE	-	315
316	BLACK CHERRY	22.0	9.0	GOOD	ONE SIDED FORM	CROWDING BY ADJACENT TREE, HIGH CROWN, DIEBACK ON LOWER BRANCHES	REMOVE	-	316
317	RED OAK	24.0	7.0	GOOD	ONE SIDED FORM	CROWDING BY ADJACENT TREE, HIGH CROWN, DIEBACK ON LOWER BRANCHES	REMOVE	-	317
318	RED OAK	60.0	17.0	FAIR	ASYMMETRICAL FORM	MATURE, CROWDING BY ADJACENT TREE, DIEBACK ON LOWER BRANCHES, CROWN DIEBACK ON CROWDED SIDE	REMOVE	-	318
319	RED OAK	97.0	25.0	GOOD	CO DOMINANT STEMS	MATURE, BROAD FORM, INCLUDED BARK, HIGH CROWN, MINOR DIEBACK ON LOWER BRANCHES	REMOVE	-	319
320	BUR OAK	35.0	13.0	GOOD	ONE SIDED FORM	CROWDING BY ADJACENT TREE, MINOR DIEBACK ON LOWER BRANCHES	REMOVE	-	320
321	SHAGBARK HICKORY	36.5	17.0	GOOD	ASYMMETRICAL FORM	CROWDING BY ADJACENT TREE, MINOR DIEBACK ON LOWER BRANCHES	REMOVE	-	321
322	COLORADO SPRUCE	28.0	10.0	FAIR	IRREGULAR FORM	COMPLETELY SUBORDINATED BY ADJACENT TREE, GIRDLED ROOTS	REMOVE	-	322
323	SUGAR MAPLE	47.0	13.0	GOOD	CO DOMINANT STEMS	ONE SIDED FORM, CROWDING BY ADJACENT TREE, INCLUDED BARK, GIRDLED ROOTS	REMOVE	-	323
324	RED OAK	65.0	16.0	FAIR	CO DOMINANT LEADERS	ASYMMETRICAL FORM, CROWDING BY ADJACENT TREE, DIEBACK ON LOWER BRANCHES, INSECT DAMAGE ON FOLIAGE, SLIGHT UPPER CROWN DIEBACK	REMOVE	-	324
325	SUGAR MAPLE	29.0	11.0	GOOD	BROAD FORM	LOW BRANCHING	REMOVE	-	325
326	SUGAR MAPLE	38.0	14.0	GOOD	ASYMMETRICAL FORM	CROWDING BY ADJACENT TREE, CO DOMINANT LEADERS	REMOVE	-	326
327	SUGAR MAPLE	51.0	9.0	GOOD	CO DOMINANT STEMS	ONE SIDED FORM, CROWDING BY ADJACENT TREE	REMOVE	-	327
328	WHITE SPRUCE	31.0	6.0	POOR	ONE SIDED FORM	CROWDING BY ADJACENT TREE, DIEBACK ON CROWDED SIDE	REMOVE	-	328
329	HAWTHORN	21-25	10.0	FAIR	DOUBLE STEM	ONE SIDED FORM, CROWDING BY ADJACENT TREE, BASAL DECAY, DECAY AND HALLOWS IN STEMS, DIEBACK ON LOWER BRANCHES	REMOVE	-	329
330	SUGAR MAPLE	53.0	17.0	GOOD	ONE SIDED FORM	MULTIPLE LEADERS, CROWDING BY ADJACENT TREE, INCLUDED BARK	REMOVE	-	330
331	SUGAR MAPLE	49.5	12.0	GOOD	ONE SIDED FORM	CROWDING BY ADJACENT TREE, CO DOMINANT LEADERS	REMOVE	-	331
332	COLORADO BLUE SPRUCE	13.0	4.0	FAIR	GOOD FORM	INTERNAL TWIG TIP DIEBACK ON LOWER BRANCHES	REMOVE	-	332

**ARBORIST REPORT
PROPOSED RESIDENTIAL DEVELOPMENT
900 MISSISSAUGA HEIGHTS DRIVE, MISSISSAUGA, ONTARIO
SUMMARY OF REMOVALS**

7

333	POPLAR	25.0	10.0	GOOD	HIGH CROWN	CROWN CROWDING BY ADJACENT TREE, DIEBACK ON LOWER BRANCHES	REMOVE	-	333
334	DEBORAH NORWAY MAPLE	15.0	6.0	GOOD	GOOD FORM	CROWDING BY ADJACENT TREE	REMOVE	-	334
335	BLACK CHERRY	64.0	13.0	GOOD	GOOD FORM	MATURE, HIGH CROWN, MINOR INTERNAL CROWN DIEBACK THROUGHOUT	REMOVE	-	335
336	DEBORAH NORWAY MAPLE	15.0	6.0	GOOD	GOOD FORM	CROWDING BY ADJACENT TREE	REMOVE	-	336
337	POPLAR	30.0	6.0	GOOD	HIGH CROWN	MINOR DIEBACK ON LOWER BRANCHES	REMOVE	-	337
338	COLORADO BLUE SPRUCE	14.0	5.0	GOOD	GOOD FORM	BRANCHING TO GRADE	REMOVE	-	338
339	POPLAR	25.5	7.0	GOOD	GOOD FORM	REMNANT SECOND STEM REMOVED	REMOVE	-	339
346	HAWTHORN	29.5	8.0	GOOD	DOUBLE STEM	ONE SIDED FORM, CROWDING BY ADJACENT TREE	REMOVE	-	346
347	GINKO	14.0	6.0	GOOD	GOOD FORM	CROWDING BY ADJACENT TREE	REMOVE	-	347
348	PAPER BIRCH	22	8.0	FAIR	MULTI-STEMMED	ONE SIDED FORM, CROWDING BY ADJACENT TREE, DIEBACK ON CROWDED SIDE. ONE STEM REMOVED	REMOVE	-	348
349	PAPER BIRCH	17.5	5.0	GOOD	IRREGULAR FORM	CROWDING BY ADJACENT TREE, MINOR SUCKER GROWTH ON STEM, DIEBACK ON LOWER BRANCHES	REMOVE	-	349
350	PAPER BIRCH	15.5-21	11.0	GOOD	DOUBLE STEM	CROWDING BY ADJACENT TREE, ASYMMETRICAL FORM, MINOR SUCKER GROWTH ON STEM	REMOVE	-	350
351	PAPER BIRCH	17.5	8.0	GOOD	ONE SIDED FORM	CROWDED BY ADJACENT TREES. LEANING, HIGH CROWN	REMOVE	-	351
352	PAPER BIRCH	31.0	11.0	GOOD	ASYMMETRICAL FORM	CROWDING BY ADJACENT TREE, HIGH CROWN, MINOR DIEBACK IN UPPER CROWN	REMOVE	-	352
353	PAPER BIRCH	29.0	11.0	GOOD	ASYMMETRICAL FORM	CROWDING BY ADJACENT TREE, LEANING, REMNANT STEM REMOVED AT GRADE	REMOVE	-	353
354	PAPER BIRCH	17-24	11.0	GOOD	ONE SIDED FORM	MULTI-STEMMED, CROWDING BY ADJACENT TREE, SUCKER GROWTH AT BASE	REMOVE	-	354
492	SCOTS PINE	29.5	6.0	DEAD	NARROW FORM	DEAD	REMOVE	-	492
493	WHITE OAK	45.0	11.0	POOR	ONE SIDED FORM	CROWDING BY ADJACENT TREE, HIGH CROWN, DIEBACK THROUGHOUT CROWN	REMOVE	-	493
494	WHITE SPRUCE	25.0	6.0	POOR	NARROW FORM	CROWDING BY ADJACENT TREE, VE., DIEBACK THROUGHOUT	REMOVE	-	494
495	SHAGBARK HICKORY	31.0	10.0	GOOD	HIGH CROWN	CROWDING BY ADJACENT TREE	REMOVE	-	495
496	NORWAY MAPLE	25.0	8.0	GOOD	ASYMMETRICAL FORM	CROWDING BY ADJACENT TREE	REMOVE	-	496
497	WHITE PINE	75.0	8.0	FAIR	NARROW FORM	MATURE, DIE BACK ON LOWER BRANCHES. TWIG TIP DIEBACK IN UPPER CROWN, HIGH CROWN	REMOVE	-	497
498	SHAGBARK HICKORY	17.5	7.0	GOOD	ONE SIDED FORM	CROWDING BY ADJACENT TREE	REMOVE	-	498
499	NORWAY MAPLE	22.0	6.0	GOOD	IRREGULAR FORM	CROWDED BY ADJACENT TREES. MINOR DEADWOOD	REMOVE	-	499
500	NORWAY MAPLE	17.5	7.0	GOOD	ASYMMETRICAL FORM	CROWDING BY ADJACENT TREE	REMOVE	-	500

ARBORIST REPORT
PROPOSED RESIDENTIAL DEVELOPMENT
900 MISSISSAUGA HEIGHTS DRIVE, MISSISSAUGA, ONTARIO

Tree Preservation Recommendations

The following tree protection measures are recommended to be undertaken by the builder in order to successfully preserve the trees noted on the Tree Preservation Plans.

Pre-Construction

- Prior to the commencement of any site works, all trees to be preserved will be protected with City approved framed tree protection hoarding. This hoarding shall be maintained for the duration of site construction. It shall not be removed until authorized by the Consulting Arborist or the City.
- Once installed, the limits of protection hoarding shall be approved in the field by the Consulting Arborist and the City of Mississauga, Urban Forestry Department.

During Construction

- Areas within the protection hoarding shall remain undisturbed for the duration of site construction and shall not be used for the storage of excavated fill, building materials, structures or equipment.
- Minor grading works will be permitted at the edge of the preservation zone as required to correct localized depressions or blend grade to limit of site works. This work to be undertaken under the review of the Consulting Arborist.
- Where root systems of trees to be preserved are exposed or damaged by construction work, they shall be trimmed neatly by a qualified Arborist in accordance with acceptable arboricultural practice. The exposed area shall be backfilled with appropriate material to prevent desiccation.
- No cables of any type shall be wrapped around or installed in trees to be preserved. No contaminants will be dumped or flushed where feeder roots of trees exist.

Post-Construction

- Following construction, the limits of the "Tree Protection Zone" shall be inspected by the Consulting Arborist. Any pruning, watering, fertilization or replacement requirements will be determined at that time.
- Tree protection hoarding may be removed to facilitate final landscape fine grading and tree planting. This must be completed under the review of the Consulting Arborist.

To ensure that the above measures are properly implemented, the Consulting Arborist shall be involved at the following stages of construction in the vicinity of the tree preservation zones:

1. Upon layout and installation of protective hoarding.
2. During water box excavation and root pruning activities.
3. Periodically during construction to ensure that hoarding remains in place and no damage occurs to trees to be preserved.
4. Upon fine grading of site or other landscape works
5. Upon completion of construction activities

**ARBORIST REPORT
PROPOSED RESIDENTIAL DEVELOPMENT
900 MISSISSAUGA HEIGHTS DRIVE, MISSISSAUGA, ONTARIO**

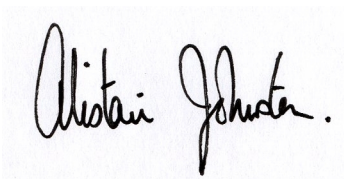
Conclusion

Strybos Barron King Ltd. was retained by Diamond Luxury Group to prepare an Arborist Report for the subject property in accordance with the City of Mississauga Tree Bylaw requirements. The report summarizes the trees inventoried and provides recommendations for retention or removal in context with the proposed site plan. Seventy-one (71) trees are recommended for removal and a tree permit will be required. The attached Tree Preservation Plan is to be used as reference with this report.

The report contains general recommendations for tree protection, preservation and remediation for trees within proximity to the proposed construction works.

Prepared By:

STRYBOS BARRON KING LTD.

A handwritten signature in black ink that reads "Alistair Johnston." The signature is written in a cursive, flowing style.

Alistair Johnston,
I.S.A. Certified Arborist #ON-5658A

**ARBORIST REPORT
PROPOSED DEVELOPMENT
900 MISSISSAUGA HEIGHTS DRIVE
MISSISSAUGA, ONTARIO**

Appendix A -SITE PHOTOGRAPHS



Existing Tennis Court and Northwest side of site (Lot 1 and Buffer)



View at Top of Bank – Along West Side (Lot 3)



View East to Mississauga Height Drive



View NE from Tennis Court to Mississauga Heights Drive (Lot and 2)



View North from Lot 4 – Existing Driveway



ARBORIST REPORT
PROPOSED RESIDENTIAL DEVELOPMENT
900 MISSISSAUGA HEIGHTS DRIVE, MISSISSAUGA, ONTARIO



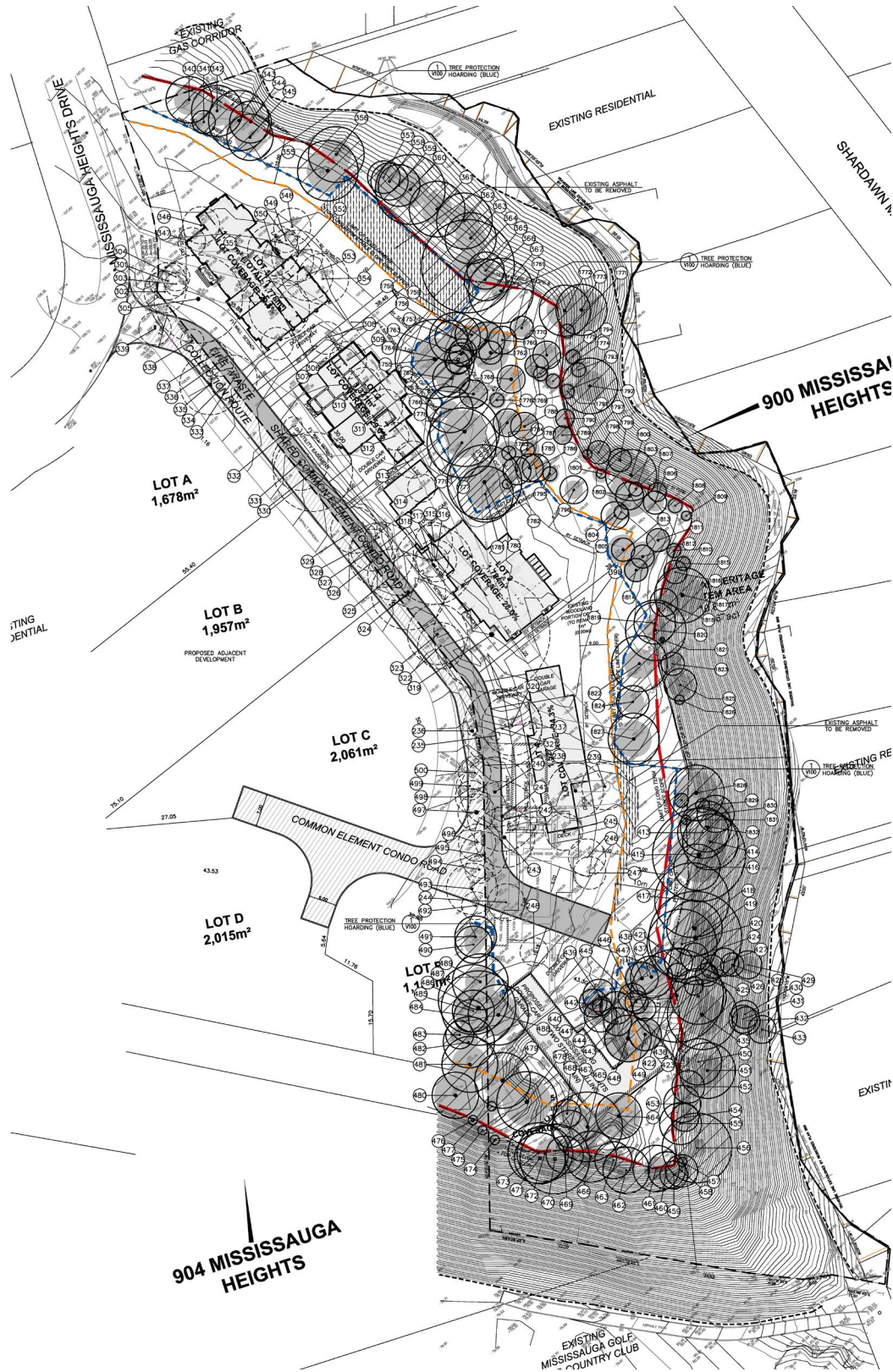
View South Approximate Mid-Point of Site
(Lot 3)

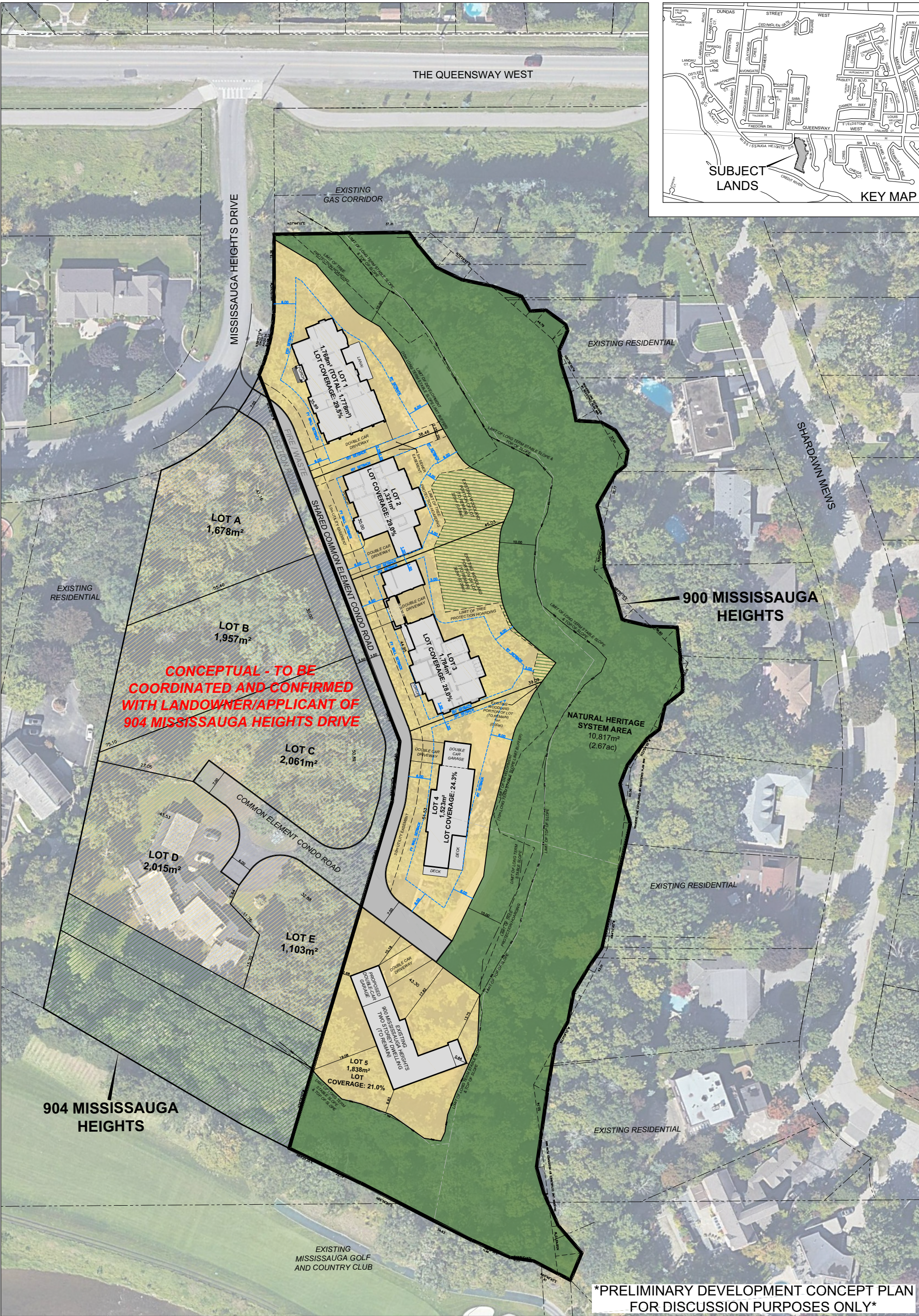


View South from Mid-Point of Site
(Lot 3)

**ARBORIST REPORT
PROPOSED DEVELOPMENT
900 MISSISSAUGA HEIGHTS DRIVE
MISSISSAUGA, ONTARIO**

Appendix B – TREE PRESERVATION & REMOVAL PLAN





*PRELIMINARY DEVELOPMENT CONCEPT PLAN
FOR DISCUSSION PURPOSES ONLY*

DEVELOPMENT CONCEPT PLAN COMMON ELEMENT CONDOMINIUM

900 MISSISSAUGA HEIGHTS DRIVE
PART OF LOTS 1 & 2,
REGISTERED PLAN 342
CITY OF MISSISSAUGA
REGIONAL MUNICIPALITY OF PEEL

DEVELOPMENT STATISTICS - 900 MISSISSAUGA HEIGHTS

DEVELOPABLE LOT AREA:	6,459m² (1.60ac)
WOODLAND LOT AREA:	708m² (0.18ac)
COMMON ELEMENTS AREA:	726m² (0.18ac)
NHS & BUFFERS AREA:	10,817m² (2.67ac)
TOTAL AREA:	18,710m² (4.63ac)
NET DEVELOPABLE AREA:	7,185m² (1.78ac)
TOTAL UNITS:	5 UNITS
SITE DENSITY:	5 UNITS / 0.719ha = 6.95UPHA

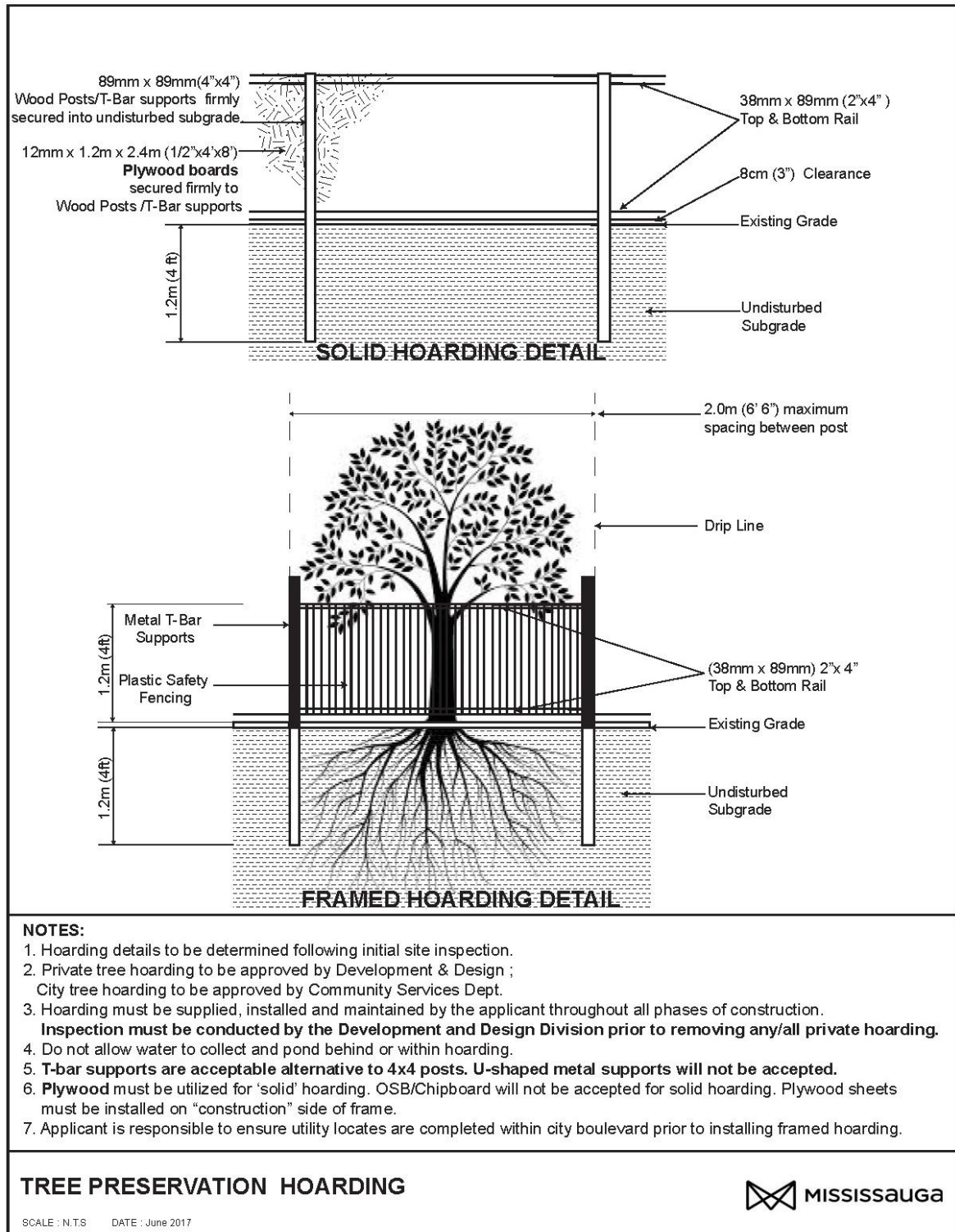


SCALE 1:1000
DECEMBER 7, 2021

GSAI
Glen Schnarr & Associates Inc.

**ARBORIST REPORT
PROPOSED DEVELOPMENT
900 MISSISSAUGA HEIGHTS DRIVE
MISSISSAUGA, ONTARIO**

APPENDIX D: TREE HOARDING DETAIL



[illegible][illegible]

SPECIFICATIONS FOR THE PROTECTION AND PRESERVATION OF EXISTING VEGETATION

- a) ALL EXISTING TREES WHICH ARE TO REMAIN SHALL BE FULLY PROTECTED WITH HOARDINGS, (E. SNOWFENCING, ERECTED BEYOND THEIR "Drip LINE" PRIOR TO THE ISSUANCE OF THE BUILDING PERMIT, TO THE SATISFACTION OF THE PLANNING AND DEVELOPMENT DEPARTMENT. GROUPS OF TREES AND OTHER EXISTING PLANTINGS TO BE PROTECTED, SHALL BE TREATED IN A LIKE MANNER WITH HOARDING AROUND THE ENTIRE CLUMP(S). AREAS WITHIN THE PROTECTIVE FENCING SHALL REMAIN UNDISTURBED AND SHALL NOT BE USED FOR THE STORAGE OF BUILDING MATERIALS OR EQUIPMENT.
- b) NO RIGGING CABLES SHALL BE WRAPPED AROUND OR INSTALLED IN TREES AND SURPLUS SOIL, EQUIPMENT, DEBRIS OR MATERIALS SHALL NOT BE PLACED OVER ROOT SYSTEMS OF THE TREES WITHIN THE PROTECTIVE FENCING. NO CONTAMINANTS WILL BE DUMPED OR FLUSHED WHERE FEEDER ROOTS OF TREES EXIST.
- c) THE DEVELOPER OR HIS/HER AGENTS SHALL TAKE EVERY PRECAUTION NECESSARY TO PREVENT DAMAGE TO TREES OR SHRUBS TO BE RETAINED.
- d) WHERE LIMBS OR PORTIONS OF TREES ARE REMOVED TO ACCOMMODATE CONSTRUCTION WORK, THEY WILL BE REMOVED CAREFULLY IN ACCORDANCE WITH ACCEPTED ARBORICULTURAL PRACTICE.
- e) WHERE ROOT SYSTEMS OF PROTECTED TREES ARE EXPOSED DIRECTLY ADJACENT TO OR DAMAGED BY CONSTRUCTION WORK, THEY SHALL BE TRIMMED NEATLY AND THE AREA BACK FILLED WITH APPROPRIATE MATERIAL TO PREVENT DESICCATION.
- f) WHEN NECESSARY, THE TREES WILL BE GIVEN AN OVERALL PRUNING TO RESTORE THE BALANCE BETWEEN ROOTS AND TOP GROWTH OR TO RESTORE THE APPEARANCE OF THE TREES.
- g) TREES THAT HAVE DIED OR HAVE BEEN DAMAGED BEYOND REPAIR, SHALL BE REMOVED AND REPLACED BY THE OWNERS AT HIS OWN EXPENSE WITH TREES OF A SIZE AND SPECIES AS APPROVED BY THE PLANNING AND DEVELOPMENT DEPARTMENT.
- h) IF GRADES AROUND TREES TO BE PROTECTED ARE LIKELY TO CHANGE, THE OWNER SHALL BE REQUIRED TO TAKE SUCH PRECAUTIONS AS DRY WELLING, RETAINING WALLS AND ROOT FEEDING TO THE SATISFACTION OF THE PLANNING AND DEVELOPMENT DEPARTMENT.

CITY OF MISSISSAUGA

TREE PRESERVATION NOTES

1. ALL EXISTING TREES, WHICH ARE TO REMAIN, SHALL BE FULLY PROTECTED WITH HOARDING TO CITY STANDARDS, ERECTED BEYOND THEIR "DRIP LINE" PRIOR TO THE ISSUANCE OF THE BUILDING PERMIT, TO THE SATISFACTION OF THE EROSION AND SEDIMENT CONTROL PERMIT, TO THE SATISFACTION OF THE COMMUNITY SERVICES DEPARTMENT. GROUPS OF TREES AND OTHER EXISTING PLANTINGS TO BE PROTECTED, SHALL BE TREATED IN A LIKE MANNER WITH HOARDING AROUND THE ENTIRE CLUMP(S). AREAS WITHIN THE PROTECTIVE FENCING SHALL REMAIN UNDISTURBED AND SHALL NOT BE USED FOR THE STORAGE OF BUILDING MATERIALS OR EQUIPMENT.
2. NO RIGGING CABLES SHALL BE WRAPPED AROUND OR INSTALLED IN TREES. SURPLUS SOIL, EQUIPMENT, DEBRIS OR MATERIALS SHALL NOT BE PLACED OVER ROOT SYSTEMS OF THE TREES WITHIN THE PROTECTIVE FENCING. NO CONTAMINANTS WILL BE DUMPED OR FLUSHED WHERE FEEDER ROOTS OF TREES EXIST.
3. THE DEVELOPER OR HIS/HER AGENTS SHALL TAKE EVERY PRECAUTION NECESSARY TO PREVENT DAMAGE TO TREES OR SHRUBS TO BE RETAINED.
4. WHERE LIMBS OR PORTIONS OF TREES ARE REMOVED TO ACCOMMODATE CONSTRUCTION WORK, THEY WILL BE REMOVED CAREFULLY IN ACCORDANCE WITH ACCEPTED ARBORICULTURAL PRACTICES.
5. WHERE ROOT SYSTEMS OF TREES ARE EXPOSED DIRECTLY ADJACENT TO OR DAMAGED BY CONSTRUCTION WORK, THEY SHALL BE TRIMMED NEATLY AND THE AREA BACK FILLED WITH APPROPRIATE MATERIAL TO PREVENT DESICCATION.
6. WHEN NECESSARY, THE TREES WILL BE GIVEN AN OVERALL PRUNING TO RESTORE THE BALANCE BETWEEN ROOTS AND TOP GROWTH OR TO RESTORE THE APPEARANCE OF THE TREES.
7. TREES THAT HAVE DIED OR HAVE BEEN DAMAGED BEYOND REPAIR, SHALL BE REMOVED AND REPLACED BY THE OWNER AT THE DEVELOPER'S OWN EXPENSE WITH TREES OF A SIZE AND SPECIES AS APPROVED BY THE COMMUNITY SERVICES DEPARTMENT.
8. IF GRADES AROUND TREES TO BE PROTECTED ARE LIKELY TO CHANGE, THE OWNER SHALL BE REQUIRED TO TAKE SUCH PRECAUTIONS AS DRY WELLING, RETAINING WALLS AND ROOT FEEDING, TO THE SATISFACTION OF THE COMMUNITY SERVICES DEPARTMENT.

75.10

27.05

43.53

LOT D
2,015m²

904 MISS
HE

[illegible][illegible]