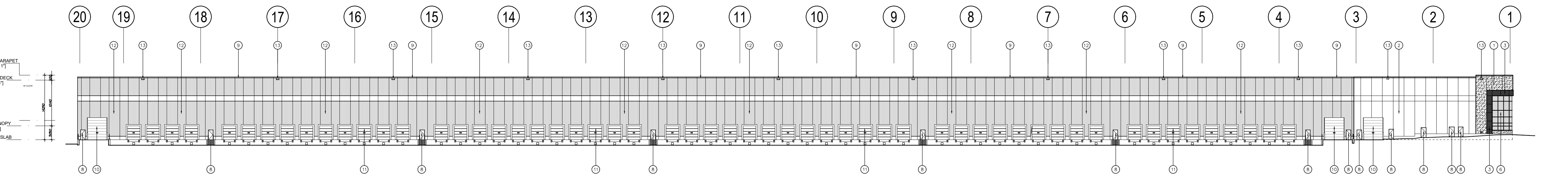
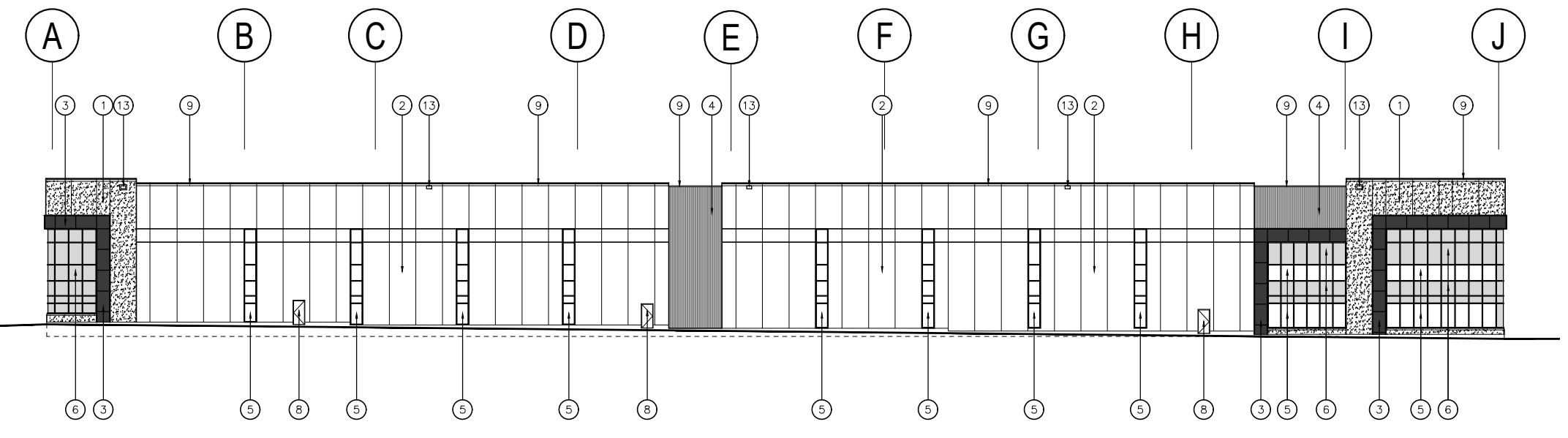


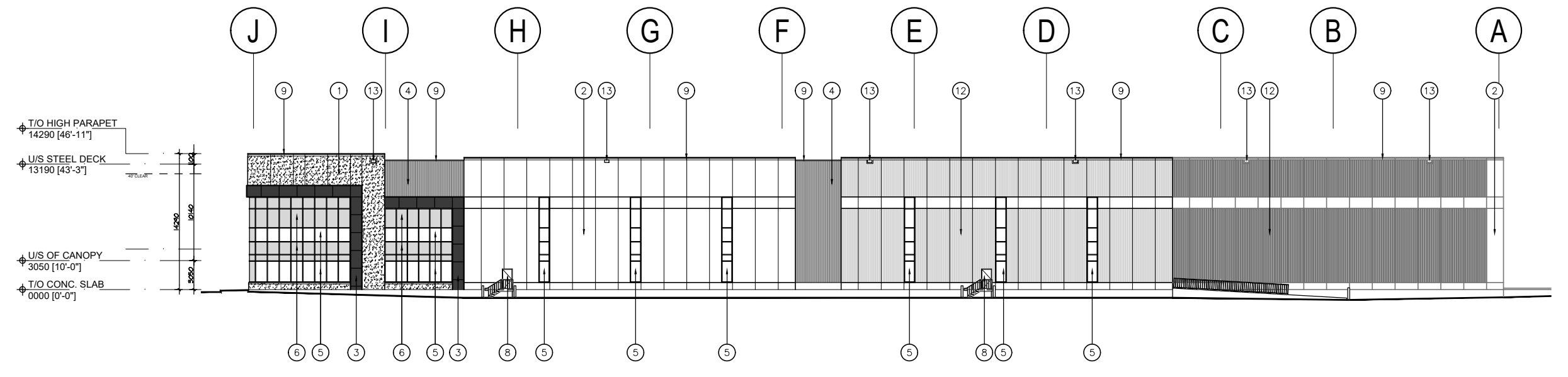
1 SOUTH ELEVATION
1:500



2 NORTH ELEVATION
1:500



3 WEST ELEVATION
1:500



4 EAST ELEVATION
1:500

- 1 INSULATED PRECAST CONCRETE PANELS W/ EXPOSED AGGREGATE FINISH. COLOUR TO BE GREY.
- 2 INSULATED PRECAST CONCRETE PANELS W/ SMOOTH FINISH. COLOUR TO BE WHITE.
- 3 COMPOSITE ALUMINUM PANELS BY ALPOLIC OR APPROVED EQUAL. COLOUR TO BE CHARCOAL.
- 4 CORRUGATED METAL PANELS. MANUFACTURER TO BE DETERMINED. COLOUR TO BE GREY.
- 5 THERMAL GLAZING IN CHARCOAL CLR ALUMINUM CURTAIN WALL FRAMES. COLOUR GREY TINT.
- 6 SPANDREL GLAZING IN ALUMINUM CURTAIN WALL FRAMES. COLOUR TO BE DARK GREY.
- 7 ALUMINUM AND TEMPERED THERMAL GLASS DOOR(S) IN ALUMINUM CURTAIN WALL DOOR FRAMING SYSTEM. COLOUR TO MATCH WINDOW GLAZING SYSTEM.
- 8 INSULATED HOLLOW METAL DOOR IN PRESSED STEEL FRAMES. DOOR AND FRAME TO BE GALVANIZED G90 FINISH.
- 9 PRE-FINISHED METAL COPING BY VICWEST OR APPROVED EQUAL. COLOUR TO MATCH MATERIAL BELOW.
- 10 INSULATED HOLLOW METAL SECTIONAL OVERHEAD DOOR. 4270mm (W) X 4890mm (H). COLOUR TO BE WHITE.
- 11 INSULATED HOLLOW METAL SECTIONAL OVERHEAD DOOR C/W DOCK SEAL, DOCK LEVELLER, DOCK BUMBERS. 2745mm (W) X 3050mm (H). COLOUR TO BE WHITE. C/W 200mm (H) X 305mm (W) LEXAN INSERT AND 1220mm (H).
- 12 INSULATED PRECAST FLEXWALL CONCRETE PANELS W/ RIBBED FINISH. COLOUR TO BE GREY.
- 13 SCUPPER.

P:\P-20087 - Carterra - Avonhead\Drawings\01 Current Drawings\BLDG A-P-20087 A-A-3.dwg, 27/01/2022 9:16:13 AM, Isabelias, DWG To PDF, p3

| No. | ISSUED | DATE |
|-----|-------------------|---------------|
| 1 | ISSUED FOR SPA | JUN. 10, 2021 |
| 2 | RE-ISSUED FOR ZBA | JAN. 27, 2022 |

| No. | REVISION | DATE |
|-----|----------------------------|---------------|
| 1 | REVISED AS NOTED | DEC. 09, 2021 |
| 2 | REVISED PER ZBA SUBMISSION | JAN. 27, 2022 |

BALDASSARRA
Architects Inc.

30 Great Gulf Drive, Unit 20 | Concord ON | L4K 0K7
T. 905.660.0722 | www.baldassarra.ca

OWNERS INFORMATION:
551 Avonhead GP Inc.
20 Adelaide Street East, Suite 800,
Toronto, ON M5C 2T6
(416) 987-2571



Carterra Avonhead

551 Avonhead Road
Mississauga, ON

**ELEVATIONS
BUILDING 'A'**

DARC 21-55

| | | | |
|-------------------|-----------------|----------|--------------------|
| DATE: MAY 2021 | DRAWN BY: CI | CHECKED: | SCALE: AS NOTED |
|-------------------|-----------------|----------|--------------------|

PROJECT No. P-20087
DRAWING No. **A-3.0A**