

GENERAL NOTES:

1. FOR LANDSCAPE DETAILS REFER DRAWINGS L100 PREPARED BY LAND ART DESIGN
2. FOR SITE GRADING REFER TO GRADING PLAN C100 PREPARED BY HUSSON ENGINEERING + MANAGEMENT
3. FOR SITE SERVICING REFER TO SERVICING PLAN C101 PREPARED BY HUSSON ENGINEERING + MANAGEMENT
4. FOR TURNING MOVEMENTS REFER TO TRAFFIC REPORT BY LEA CONSULTING LTD.
5. ALL GRATES WILL HAVE A POROSITY OF LESS THAN 20mm X 20mm
6. ALL EXTERIOR LIGHTING (AT GRADE & AMENITY) WILL BE FULL CUTOFF & DIRECTED DOWNWARDS
7. BIRD FRIENDLY VISUAL MARKERS SHALL BE 5mm DIA. CERAMIC FRIT DOT @ 5cm ON CENTRE WITH A STRONG CONTRAST COLOUR
8. FOR SOLID WASTE MANAGEMENT REFER TO WASTE MANAGEMENT REPORT BY PRAGMA TECH SEPTEMBER 10, 2021

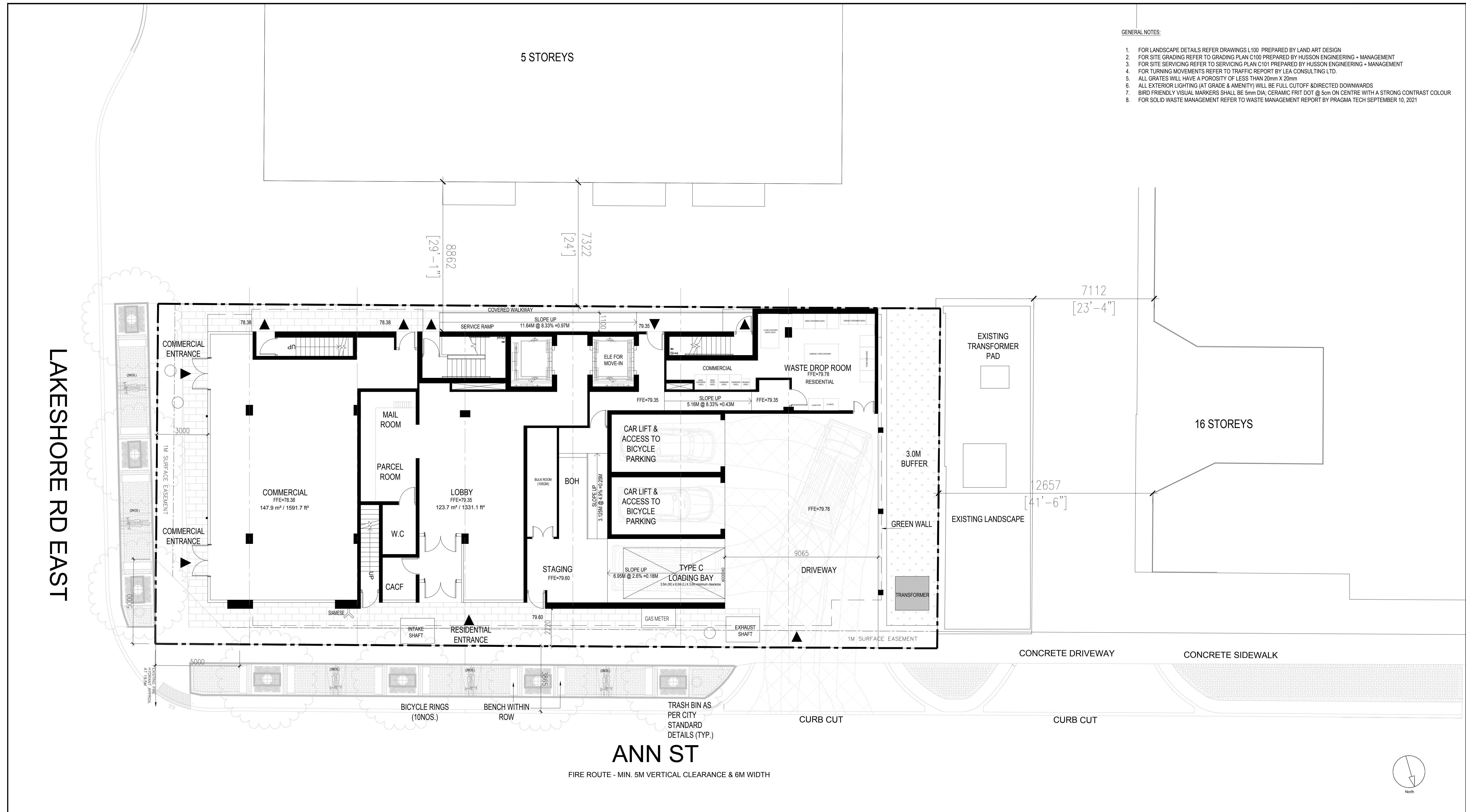
5 STOREYS

16 STOREYS

LAKESHORE RD EAST

ANN ST

FIRE ROUTE - MIN. 5M VERTICAL CLEARANCE & 6M WIDTH



CLIENT



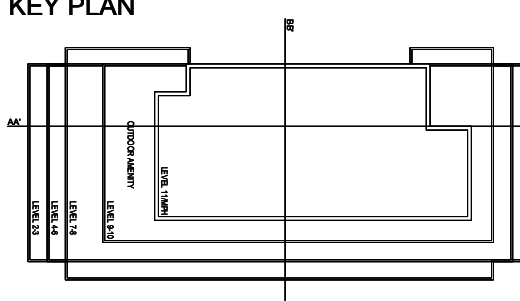
BLACKTUSK GROUP
800-365 Bay Street, Toronto, ON M5H 2V1

COPYRIGHT

This drawing has been prepared solely for the intended use, thus any reproduction or distribution for any purpose other than authorized by IBI Group is forbidden. Written dimensions shall have precedence over scaled dimensions. Contractors shall verify and be responsible for all dimensions and conditions on the job, and IBI Group shall be informed of any variations from the dimensions and conditions shown on the drawing. Shop drawings shall be submitted to IBI Group for general conformance before proceeding with fabrication.

is a member of the IBI Group of companies

KEY PLAN



ISSUES

No.	DESCRIPTION	DATE
01	ZBA SUBMISSION 1	2021/12/10

SEAL



PROJECT


128 Lakeshore

PROJECT NO: 132973

DRAWN BY: CHECKED BY:

SCALE: 1:150 APPROVED BY:

PRIME CONSULTANT



IBI GROUP ARCHITECTS
7th Floor-55 St. Clair Avenue West
Toronto ON M4V 2Y7 Canada
tel: 416 596 1930 fax: 416 596 0644
ibigroup.com

SHEET TITLE

Ground Floor

SHEET NUMBER

A203

ISSUE

SCALE CHECK

1/16