

Notice of Study Commencement and Online Public Information Centre Municipal Class Environmental Assessment Study for Carolyn Creek Erosion Control along Barbartown Road

WHAT?

The City of Mississauga is undertaking a Schedule 'B' Municipal Class Environmental Assessment (Class EA) to identify a preferred solution to address erosion problems along a section of Carolyn Creek along Barbartown Road (please refer to the key plan for Study Area limits).

WHY?

Through its ongoing erosion monitoring program, the City of Mississauga has identified the creek reach on the south side of Barbartown Road as a high priority site in need of rehabilitation, based on the continued erosion and risk to property and infrastructure.

HOW?

- The study has examined the creek and associated natural environment to identify existing erosion problems, potential future risks, and opportunities for restoration and environmental enhancement.
- Through the Municipal Class EA process, multiple alternative solutions have been developed and evaluated by the Study Team and will be considered for refinement through consultation process (see below). The Study Team will then confirm a Preferred Solution and proceed with the detailed design of the recommended works.
- At the end of the Class EA Study, a Project File Report, documenting the study process will be available for review by the public, Indigenous Nations, Government Agencies, and stakeholders.

GET INVOLVED!

- Consultation is an essential part of the Municipal Class EA process. We want to ensure that anyone with an interest in this study has the opportunity to provide input. The Study Team has developed an information package to allow local residents, interested members of the public, Indigenous Nations, Government Agencies and interested stakeholders an opportunity to review and comment on the alternative solutions, the evaluation process, the preliminary preferred solution and the next steps in the study. The information package will be made available on a dedicated Project webpage for this project on City's website from **March 23 to April 20, 2022**: www.mississauga.ca/carolyncreekstudy
- Please provide us your comments by **April 20, 2022**, by using the Online Comment Form available on project webpage. Comments can also be sent to the following contacts via email:

Anthony Di Giandomenico P.Eng.

Storm Drainage Engineer

City of Mississauga

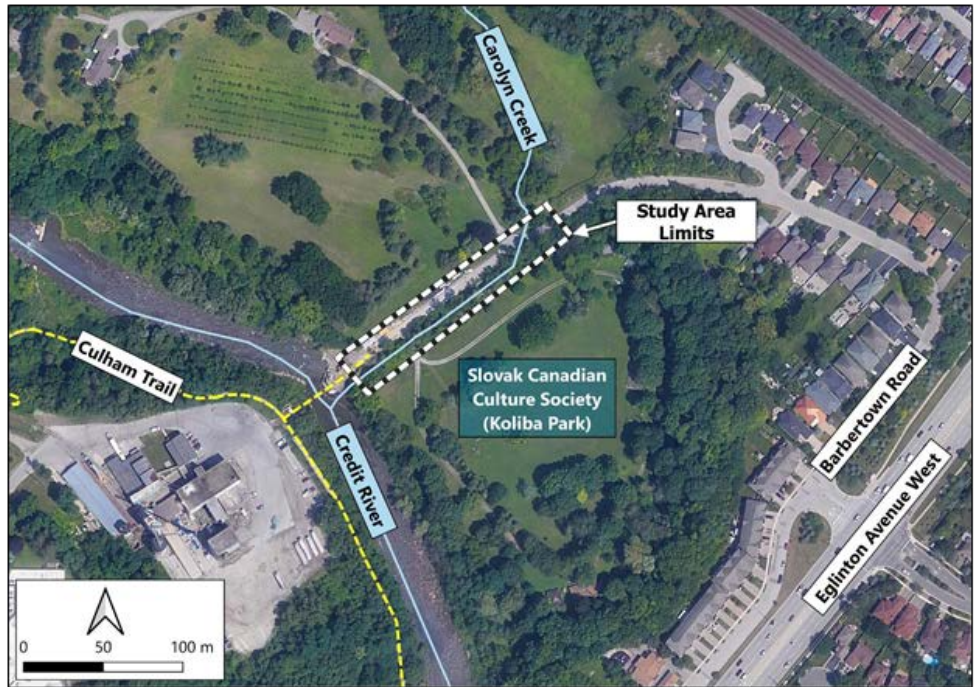
anthony.digiandomenico@mississauga.ca

Brian Bishop, M.Eng., P.Eng.

Senior Associate, Water Resources

Wood Environment & Infrastructure Solutions

brian.bishop@woodplc.com



Personal information is collected under the authority of the Environmental Assessment Act and will be used in the assessment process. With exception of personal information, all comments shall become part of the public records. Questions about this collection should be directed to the Project Manager listed above. This notice was issued in March 2022.