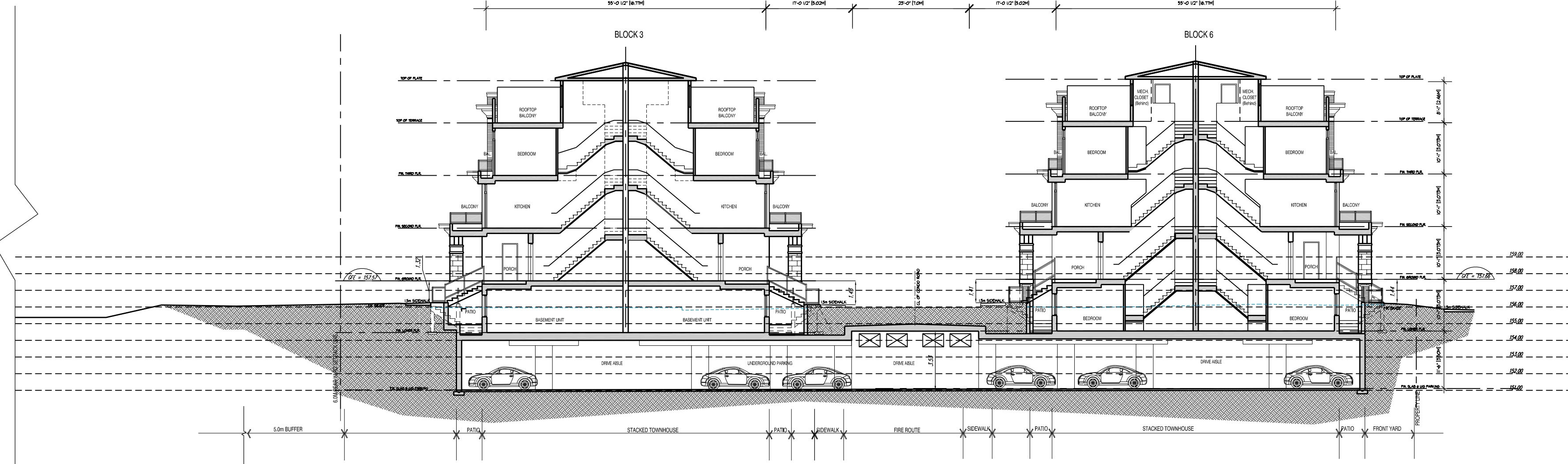
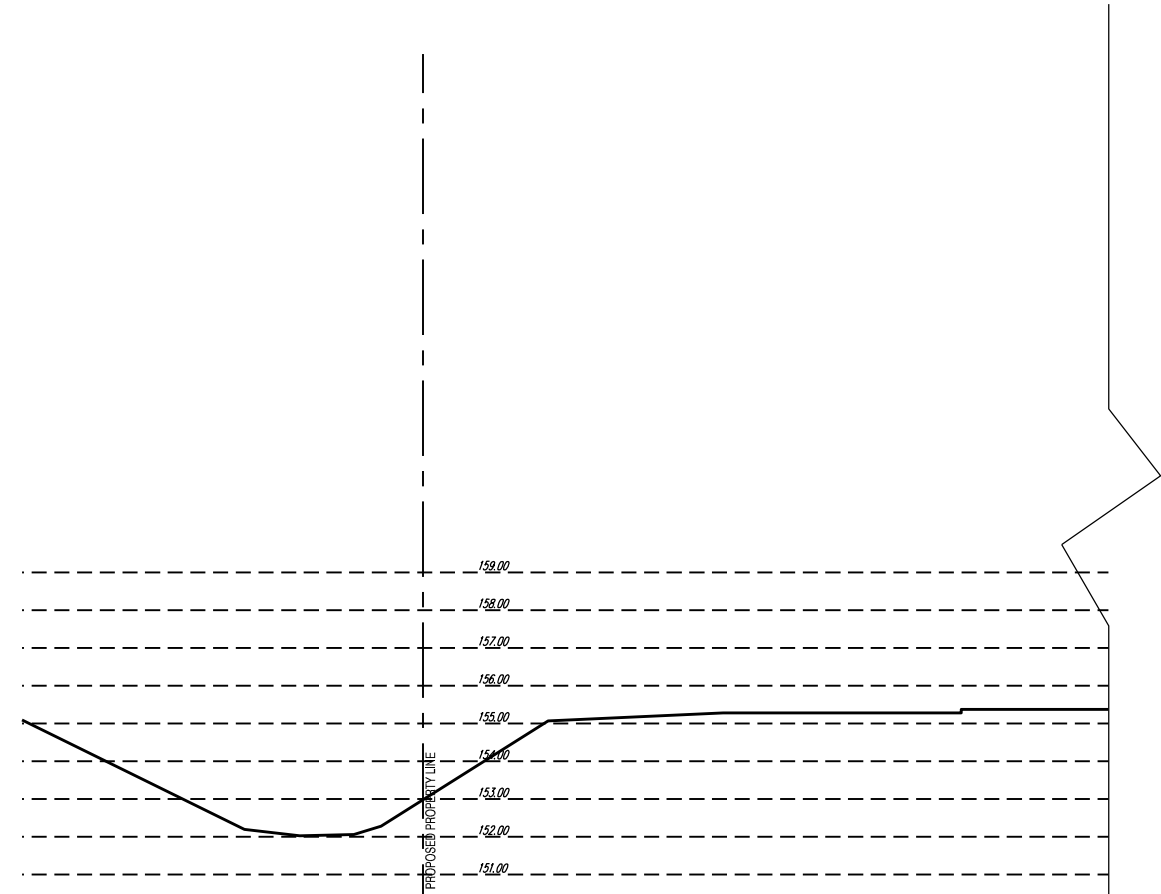
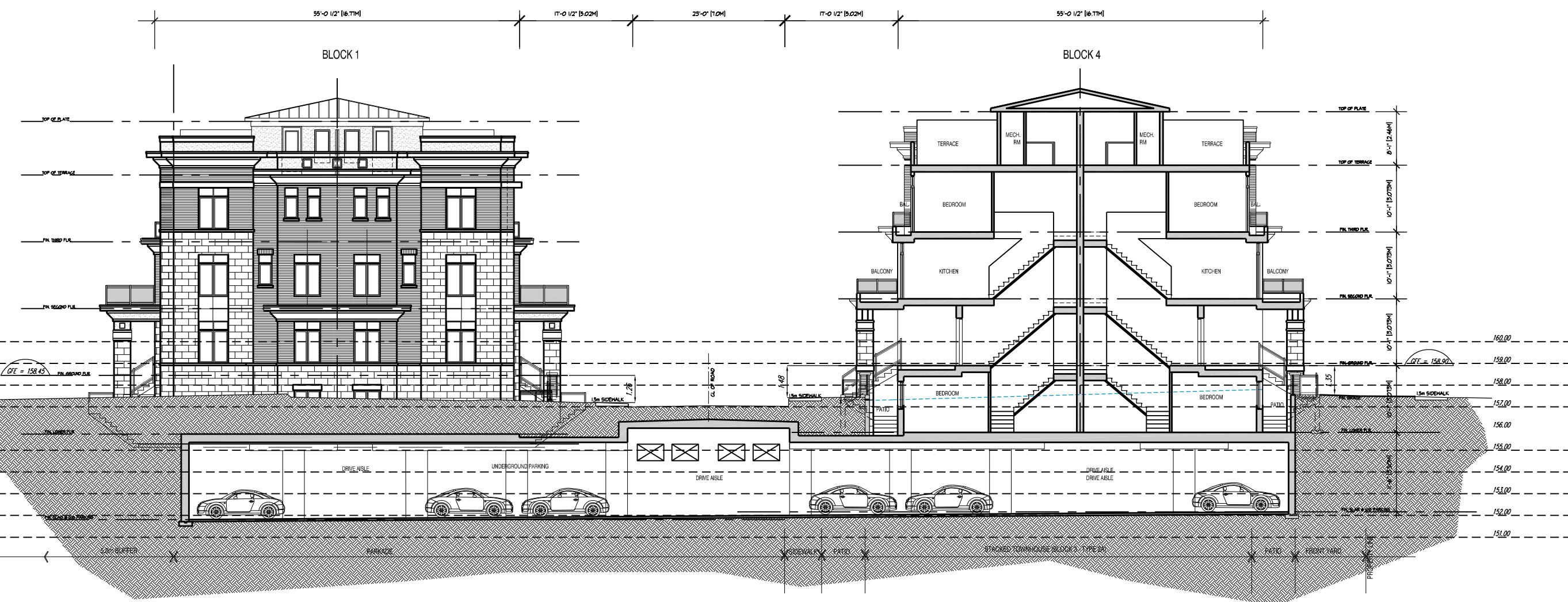
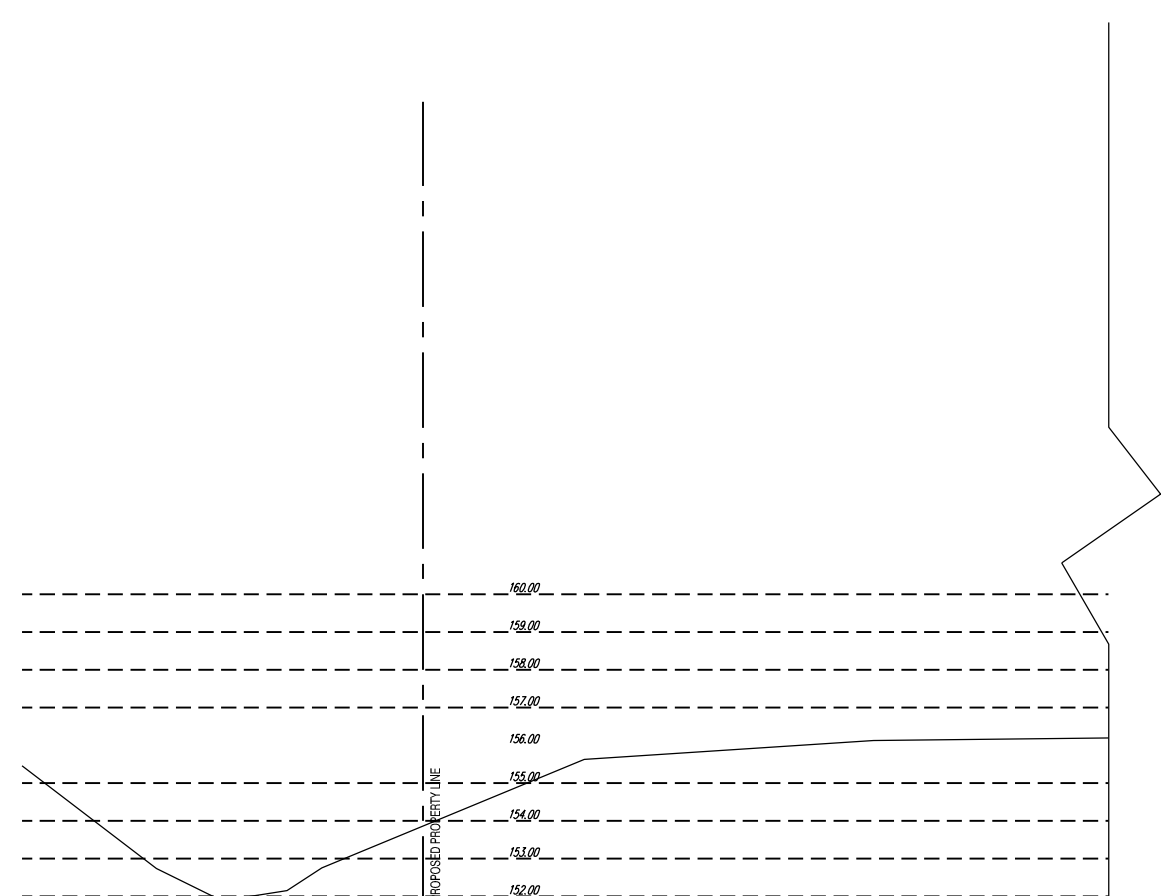


1 SECTION A-A
Scale: 1:800



2 SECTION B-B
Scale: 1:800



3 SECTION C-C
Scale: 1:800

APPLICATION NUMBER: _____

APPLICATION NUMBER: _____

THIS DRAWING IS AN INSTRUMENT OF SERVICE, IS PROVIDED BY AND IS THE PROPERTY OF 4 ARCHITECTURE INC.

THE CONTRACTOR MUST VERIFY AND ACCEPT RESPONSIBILITY FOR ALL DIMENSIONS AND CONDITIONS ON SITE, AND MUST NOTIFY 4 ARCHITECTURE INC. OF ANY VARIATION FROM THE SUPPLIED INFORMATION.

4 ARCHITECTURE INC. IS NOT RESPONSIBLE FOR THE ACCURACY OF SURVEY, STRUCTURAL, MECHANICAL, ELECTRICAL, ETC. ENGINEERING INFORMATION SHOWN ON THIS DRAWING. REFER TO THE PROPER ENGINEERING DRAWINGS BEFORE PROCEEDING WITH THE WORK.

CONSTRUCTION MUST CONFORM TO ALL APPLICABLE CODES AND REQUIREMENTS OF AUTHORITIES HAVING JURISDICTION.

ALL ARCHITECTURAL SYMBOLS INDICATED ARE GRAPHIC REPRESENTATIONS ONLY.

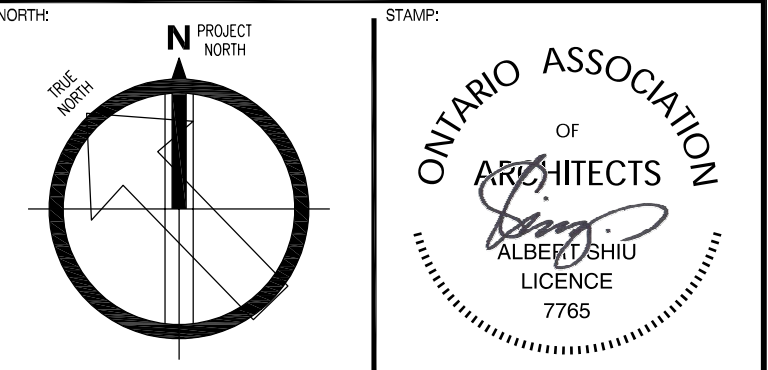
KEY MAP - NOT TO SCALE - SCALED



MISSISSAUGA, ONTARIO

REVISIONS		
NO.	DESCRIPTION	DATE

SUBMITTALS		
NO.	DESCRIPTION	DATE



4 ARCHITECTURE INC.
WWW.4ARCHITECTURE.CA
8966 Woodbine Avenue, Suite 300, Markham, ON L3R 0J7
T: (905) 470 7212 // F: (905) 737 7326 email: m4a@4architecture.ca

DEZEN REALTY - 218072
TOWNHOUSE RESIDENTIAL DEVELOPMENT

MISSISSAUGA, ONTARIO JOYMAR DR./THOMAS ST.

SECTIONS A, B & C

REV. 2021.07.22

Scale	Drawn By	Checked By	PLANT
1:800	JZ/SL	SL	A103