

ROOF BALCONY PLAN (TYPE-1)



WEST SIDE ELEVATION
TOWNHOUSE TYPE '1' - BLOCKS 5,6



EAST ELEVATION
TOWNHOUSE TYPE '1' - BLOCKS 5,6

BLOCK TYPE-1		2BED	2BED+DEN	2BED+DEN	2BED	
UNIT TYPE	AREA					
TYPE-B (LHS)	838.91 SF	2				1677.84 SF
TYPE-2	164.04 SF		4			656.16 SF
TYPE-3A(ENTRY)	521.05 SF			4		2084.20 SF
TYPE-B (RHS)	838.15 SF	2				1676.30 SF
TYPE-6A	431.02 SF	1				431.02 SF
TYPE-1	884.88 SF		4			3539.52 SF
TYPE-3A(UPPER)	423.15 SF			4		1692.60 SF
TYPE-6B	431.02 SF	1				431.02 SF
TYPE-6B(STAIR)	247.92 SF					247.92 SF
TYPE-6C(STAIR)	445.84 SF					445.84 SF
TYPE-6D(STAIR)	247.92 SF					247.92 SF
TYPE-6B(ENTRY)	543.33 SF	4				2173.32 SF
TYPE-6C(ENTRY)	532.22 SF		4			2128.88 SF
TYPE-6D(ENTRY)	543.33 SF		4			2173.32 SF
TYPE-6B(UPPER)	531.51 SF					2126.04 SF
TYPE-6C(UPPER)	520.40 SF					2081.60 SF
TYPE-6D(UPPER)	531.51 SF					2126.04 SF
GFA	53651.48 SF					53651.48 SF
2 BEDROOM		6				
2 BEDRM + DEN			20			
3 BEDROOM				8		
TOTAL UNITS		54				

(TYPE '1') - BLOCK 5,6

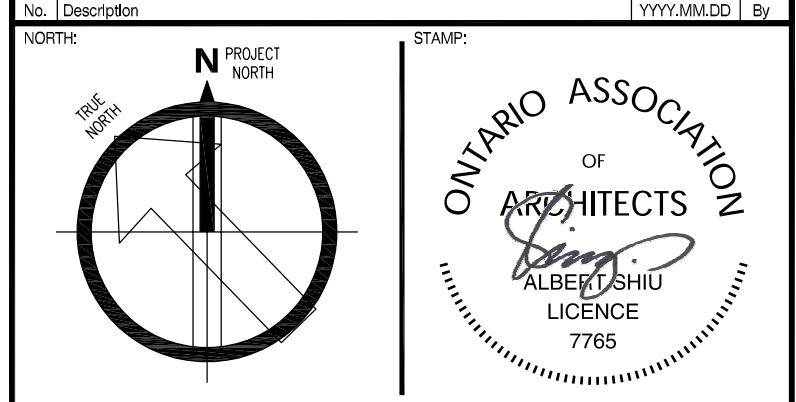
APPLICATION NUMBER: -

APPLICATION NUMBER: -

THIS DRAWING IS AN INSTRUMENT OF SERVICE PROVIDED BY AND IS THE PROPERTY OF 4 ARCHITECTURE INC.
THE CONTRACTOR MUST VERIFY AND ACCEPT RESPONSIBILITY FOR ALL DIMENSIONS AND CONDITIONS ON SITE, AND MUST NOTIFY 4 ARCHITECTURE INC. OF ANY VARIATION FROM THE SUPPLIED INFORMATION.
4 ARCHITECTURE INC. IS NOT RESPONSIBLE FOR THE ACCURACY OF SURVEY, STRUCTURAL, MECHANICAL, ELECTRICAL, ETC. ENGINEERING INFORMATION SHOWN ON THIS DRAWING. REFER TO THE PROPER ENGINEERING DRAWINGS BEFORE PROCEEDING WITH THE WORK.
CONSTRUCTION MUST CONFORM TO ALL APPLICABLE CODES AND REQUIREMENTS OF AUTHORITIES HAVING JURISDICTION.
ALL ARCHITECTURAL SYMBOLS INDICATED ARE GRAPHIC REPRESENTATIONS ONLY.
DRAWINGS ARE NOT TO BE SCALED.

REVISIONS	
NO.	DESCRIPTION
1	ISSUED FOR OPA & ZONING APPLICATION - 2ND SUBMISSION - REV.02
2	ISSUED FOR OPA & ZONING APPLICATION - 2ND SUBMISSION - REV.01
3	ISSUED FOR OPA & ZONING APPLICATION - 2ND SUBMISSION
4	ISSUED FOR OPA & ZONING APPLICATION

SUBMITTALS	
NO.	DESCRIPTION
1	ISSUED FOR OPA & ZONING APPLICATION
2	ISSUED FOR OPA & ZONING APPLICATION - 2ND SUBMISSION
3	ISSUED FOR OPA & ZONING APPLICATION - 2ND SUBMISSION - REV.01
4	ISSUED FOR OPA & ZONING APPLICATION - 2ND SUBMISSION - REV.02



4 ARCHITECTURE INC.
WWW.4ARCHITECTURE.CA
8966 Woodbine Avenue, Suite 300, Markham, ON L3R 0J7
T: (905) 470-7212 // F: (905) 737-7326 email: msh@4architecture.ca

DEZEN REALTY - 218072
TOWNHOUSE RESIDENTIAL DEVELOPMENT
MISSISSAUGA, ONTARIO JOYMAR DR./THOMAS ST.
FLOOR PLANS & ELEVATIONS -TYPE 1 - BLOCK 5,6
REV.2021.07.22

Scale: 1/8"=1'-0"
Drawn By: ASP/N
Checked By: AS
218072DT_UNITS.DWG

A113