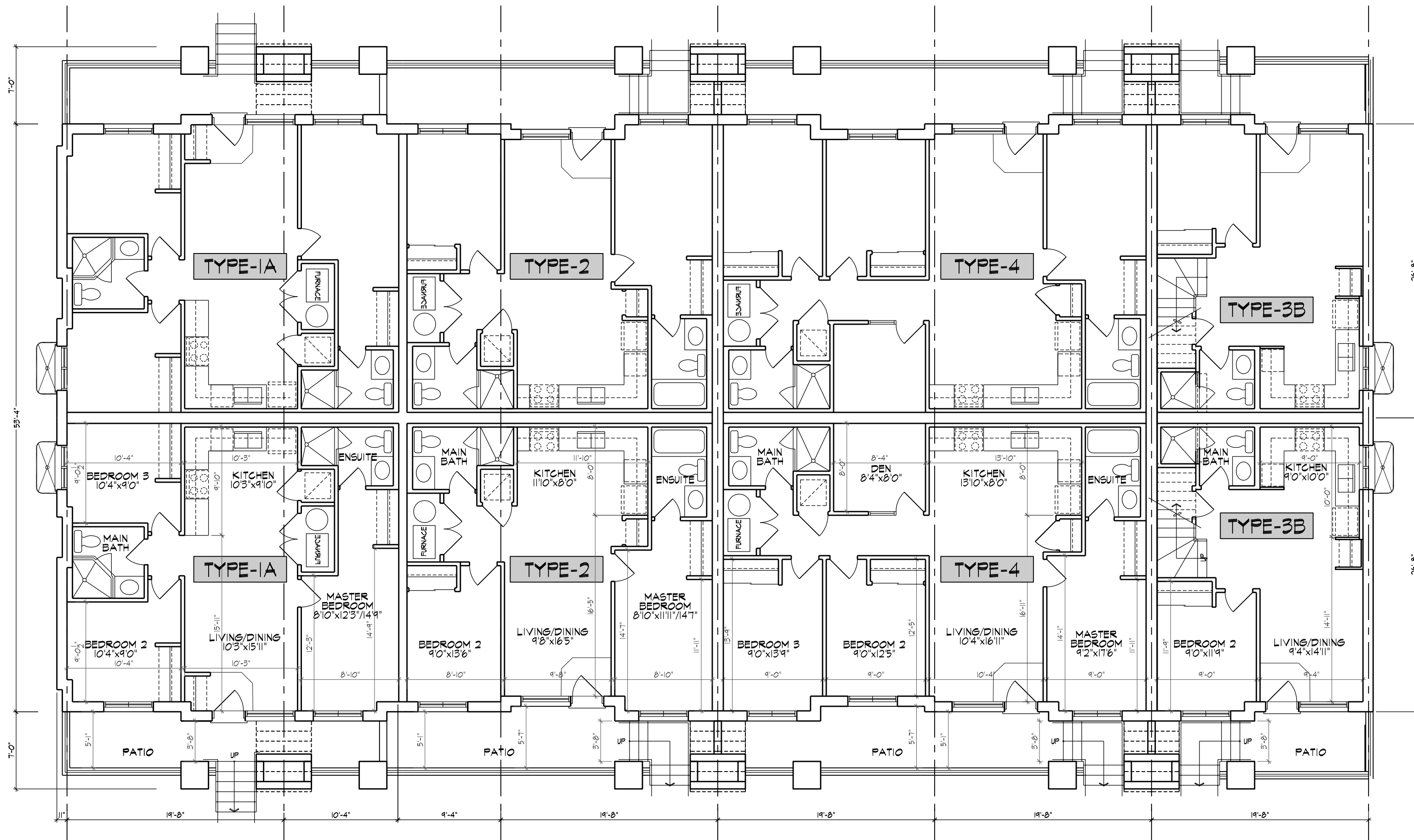


GROUND FLOOR PLAN (TYPE-2A)



LOWER GROUND FLOOR PLAN (TYPE-2A)

BLOCK TYPE-2A				
UNIT TYPE	AREA	N	BED	AREA
TYPE-1A	851.22 SF			1702.44 SF
TYPE-2	164.18 SF			1528.36 SF
TYPE-4	1038.93 SF			2117.86 SF
TYPE-3B (ENTRY)	543.33 SF	2	2	1086.66 SF
TYPE-6A	430.11 SF	1		930.11 SF
TYPE-7	864.41 SF		4	3457.68 SF
TYPE-3B(UPPER)	454.01 SF			408.14 SF
TYPE-2A(STAIR)	241.42 SF			241.42 SF
TYPE-2B(STAIR)	241.42 SF			241.42 SF
TYPE-2C(STAIR)	241.42 SF			241.42 SF
TYPE-2A(ENTRY-LHS)	533.02 SF	2	4	1066.04 SF
TYPE-2B(ENTRY)	533.02 SF	4	4	2132.08 SF
TYPE-2C(ENTRY)	533.02 SF	4	4	2132.08 SF
TYPE-2A(ENTRY-RHS)	543.33 SF	2		1086.66 SF
TYPE-2A(UPPER-LHS)	542.01 SF			1084.02 SF
TYPE-2B(UPPER)	520.88 SF			2083.52 SF
TYPE-2C(UPPER)	520.88 SF			2083.52 SF
TYPE-2A(UPPER-RHS)	531.51 SF			1063.02 SF
GFA	25,249.45 SF			25,249.45 SF
2 BEDROOM		5		
2 BEDROOM + DEN		14		
3 BEDROOM		6		
TOTAL UNITS		25		

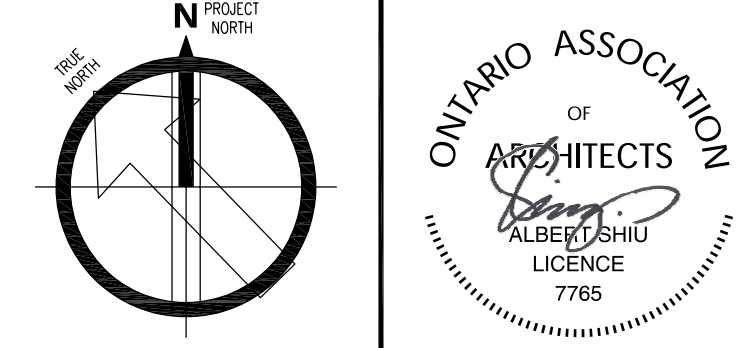
APPLICATION NUMBER:

APPLICATION NUMBER:

THIS DRAWING IS AN INSTRUMENT OF SERVICE PROVIDED BY AND IS THE PROPERTY OF 4 ARCHITECTURE INC. THE CONTRACTOR MUST VERIFY AND ACCEPT RESPONSIBILITY FOR ALL DIMENSIONS AND CONDITIONS ON SITE, AND MUST NOTIFY 4 ARCHITECTURE INC. OF ANY VARIATION FROM THE SUPPLIED INFORMATION. 4 ARCHITECTURE INC. IS NOT RESPONSIBLE FOR THE ACCURACY OF SURVEY, STRUCTURAL, MECHANICAL, ELECTRICAL, ETC. ENGINEERING INFORMATION SHOWN ON THIS DRAWING. REFER TO THE PROPER ENGINEERING DRAWINGS BEFORE PROCEEDING WITH THE WORK. CONSTRUCTION MUST CONFORM TO ALL APPLICABLE CODES AND REQUIREMENTS OF AUTHORITIES HAVING JURISDICTION. ALL ARCHITECTURAL SYMBOLS INDICATED ARE GRAPHIC REPRESENTATIONS ONLY. DRAWINGS ARE NOT TO BE SCALED.

REVISIONS		
NO.	DESCRIPTION	DATE
1	ISSUED FOR OPA & ZONING APPLICATION - 2ND SUBMISSION - REV.02	2022.02.14 AS
2	ISSUED FOR OPA & ZONING APPLICATION - 2ND SUBMISSION - REV.01	2021.07.22 AS
3	ISSUED FOR OPA & ZONING APPLICATION - 2ND SUBMISSION	2020.06.16 AS
4	ISSUED FOR OPA & ZONING APPLICATION	2019.06.26 SL
5	DESCRIPTION	171133A320 (S)

SUBMITTALS		
NO.	DESCRIPTION	DATE
1	ISSUED FOR OPA & ZONING APPLICATION	2019.06.26 SL
2	ISSUED FOR OPA & ZONING APPLICATION - 2ND SUBMISSION	2020.06.16 AS
3	ISSUED FOR OPA & ZONING APPLICATION - 2ND SUBMISSION - REV.01	2021.07.22 AS
4	ISSUED FOR OPA & ZONING APPLICATION - 2ND SUBMISSION - REV.02	2022.02.14 AS



4 ARCHITECTURE INC
WWW.4ARCHITECTURE.CA
8966 Woodbine Avenue, Suite 300, Markham, ON L3R 0J7
T: (905) 470-7212 // F: (905) 737-7326 email: mab@4architecture.ca

DEZEN REALTY - 218072
TOWNHOUSE RESIDENTIAL DEVELOPMENT

MISSISSAUGA, ONTARIO JOYMAR DR./THOMAS ST.
FLOOR PLANS - TYPE 2A - BLOCK 1,3,4,8

REV.2021.07.22
Scale: 1/8" = 1'-0"
218072DT_UNITS.DWG

(TYPE '2A') - BLOCK 1,3,4,8

A121