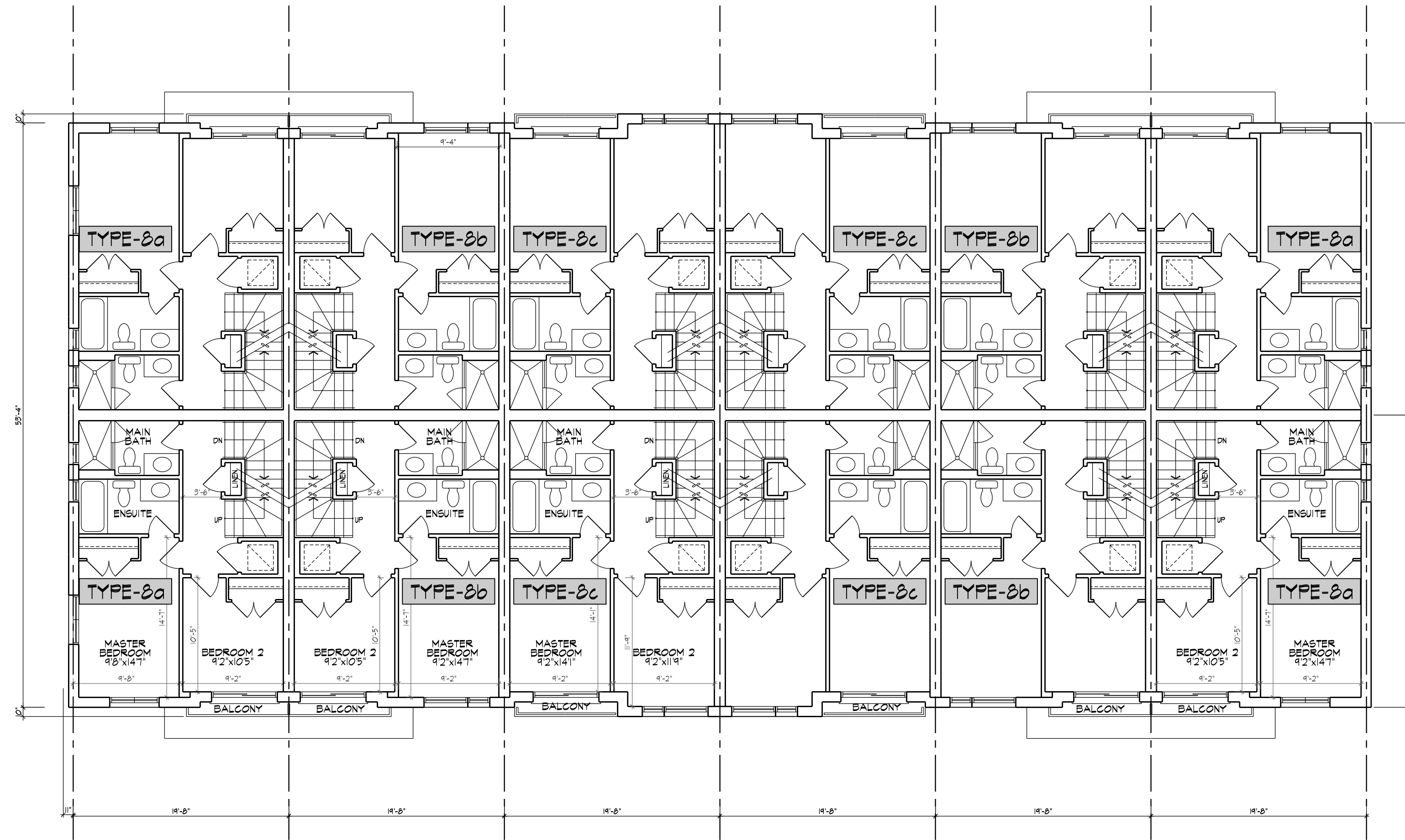
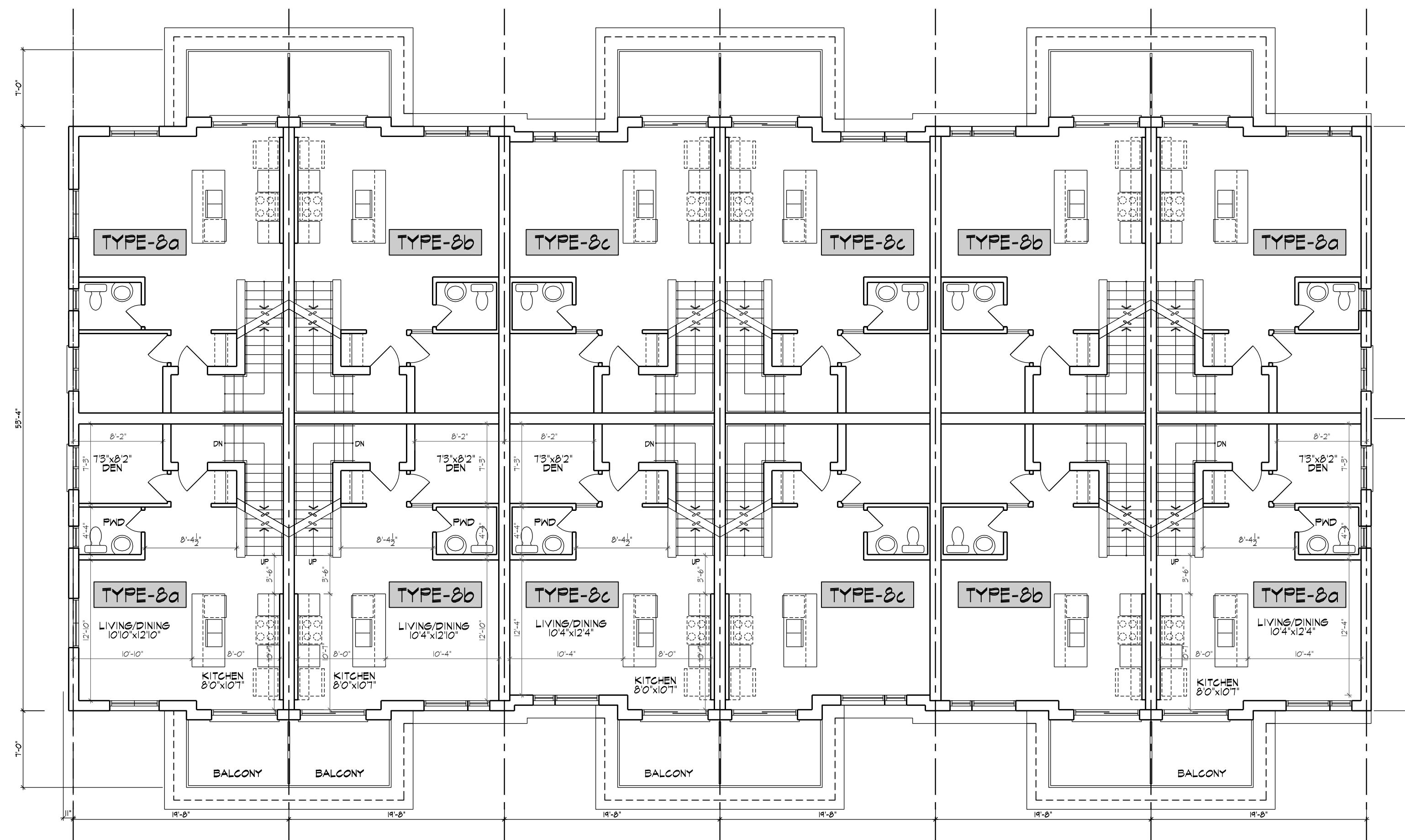


DATE: 11/08/2021, PROJECT: 218072, SHEET: 218072D1 UNITS, DWG: 218072D1_UNITS.DWG



THIRD FLOOR PLAN (TYPE-2B)



SECOND FLOOR PLAN (TYPE-2B)

BLOCK TYPE-2B	UNIT TYPE	AREA	SPEC			TOTAL
			1	2	3	
GROUND / LOW RISE	TYPE-1B	851.22 SF				1702.44 SF
	TYPE-2	164.18 SF				164.18 SF
	TYPE-4	1058.43 SF		2		2116.86 SF
	TYPE-3B (ENTRY)	543.33 SF		2		1086.66 SF
MID RISE	TYPE-6B	430.11 SF	1			430.11 SF
	TYPE-7	864.41 SF			4	3457.64 SF
	TYPE-3B(UPPER)	454.07 SF				454.07 SF
	TYPE-6A(STAIR)	241.42 SF				241.42 SF
	TYPE-6B(STAIR)	241.42 SF				241.42 SF
	TYPE-6C(STAIR)	241.42 SF				241.42 SF
	TYPE-6A(ENTRY-LHS)	554.34 SF		2		1108.68 SF
	TYPE-6B(ENTRY)	533.02 SF		4		2132.08 SF
	TYPE-6C(ENTRY)	533.02 SF		4		2132.08 SF
	TYPE-6A(ENTRY-RHS)	543.33 SF		2		1086.66 SF
HIGH RISE	TYPE-6A(UPPER-LHS)	542.01 SF				542.01 SF
	TYPE-6B(UPPER)	520.88 SF				2083.52 SF
	TYPE-6C(UPPER)	520.88 SF				2083.52 SF
	TYPE-6A(UPPER-RHS)	531.51 SF				1063.02 SF
	TYPE-6B(UPPER)	520.88 SF				2083.52 SF
GFA	25,244.45 SF				25,244.45 SF	
2 BEDROOM			5			
2 BEDRM + DEN				14		
3 BEDROOM					6	
TOTAL UNITS				25		

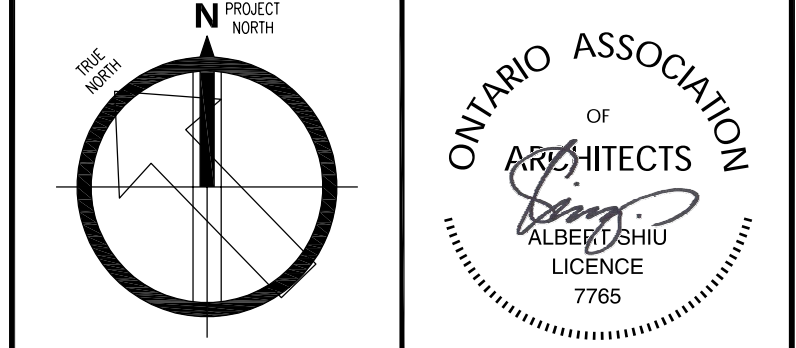
APPLICATION NUMBER: _____

APPLICATION NUMBER: _____

THIS DRAWING IS AN INSTRUMENT OF SERVICE PROVIDED BY AND IS THE PROPERTY OF 4 ARCHITECTURE INC.
 THE CONTRACTOR MUST VERIFY AND ACCEPT RESPONSIBILITY FOR ALL DIMENSIONS AND CONDITIONS ON SITE, AND MUST NOTIFY 4 ARCHITECTURE INC. OF ANY VARIATION FROM THE SUPPLIED INFORMATION.
 4 ARCHITECTURE INC. IS NOT RESPONSIBLE FOR THE ACCURACY OF SURVEY, STRUCTURAL, MECHANICAL, ELECTRICAL, ETC. ENGINEERING INFORMATION SHOWN ON THIS DRAWING. REFER TO THE PROPER ENGINEERING DRAWINGS BEFORE PROCEEDING WITH THE WORK.
 CONSTRUCTION MUST CONFORM TO ALL APPLICABLE CODES AND REQUIREMENTS OF AUTHORITIES HAVING JURISDICTION.
 ALL ARCHITECTURAL SYMBOLS INDICATED ARE GRAPHIC REPRESENTATIONS ONLY.
 DRAWINGS ARE NOT TO BE SCALED.

REVISIONS			
NO.	DESCRIPTION	DATE	BY

SUBMITTALS			
NO.	DESCRIPTION	DATE	BY



4 ARCHITECTURE INC.
 WWW.4ARCHITECTURE.CA
 8966 Woodbine Avenue, Suite 300, Markham, ON L3R 0J7
 T: (905) 470-7212 / F: (905) 737-7326 email: msh@4architecture.ca

DEZEN REALTY - 218072
 TOWNHOUSE RESIDENTIAL DEVELOPMENT
 MISSISSAUGA, ONTARIO JOYMAR DR./THOMAS ST.
FLOOR PLANS - TYPE 2B - BLOCK 7

REV. 2021.07.22
 Scale: 1/8" = 1'-0"
 Drawn By: AS
 Check By: AS
A132

(TYPE '2B') - BLOCK 7