

TOPOGRAPHIC PLAN OF 5160 AND 5170 NINTH LINE CITY OF MISSISSAUGA REGIONAL MUNICIPALITY OF PEEL

SCALE 1 : 300
0 5 10 20 metres

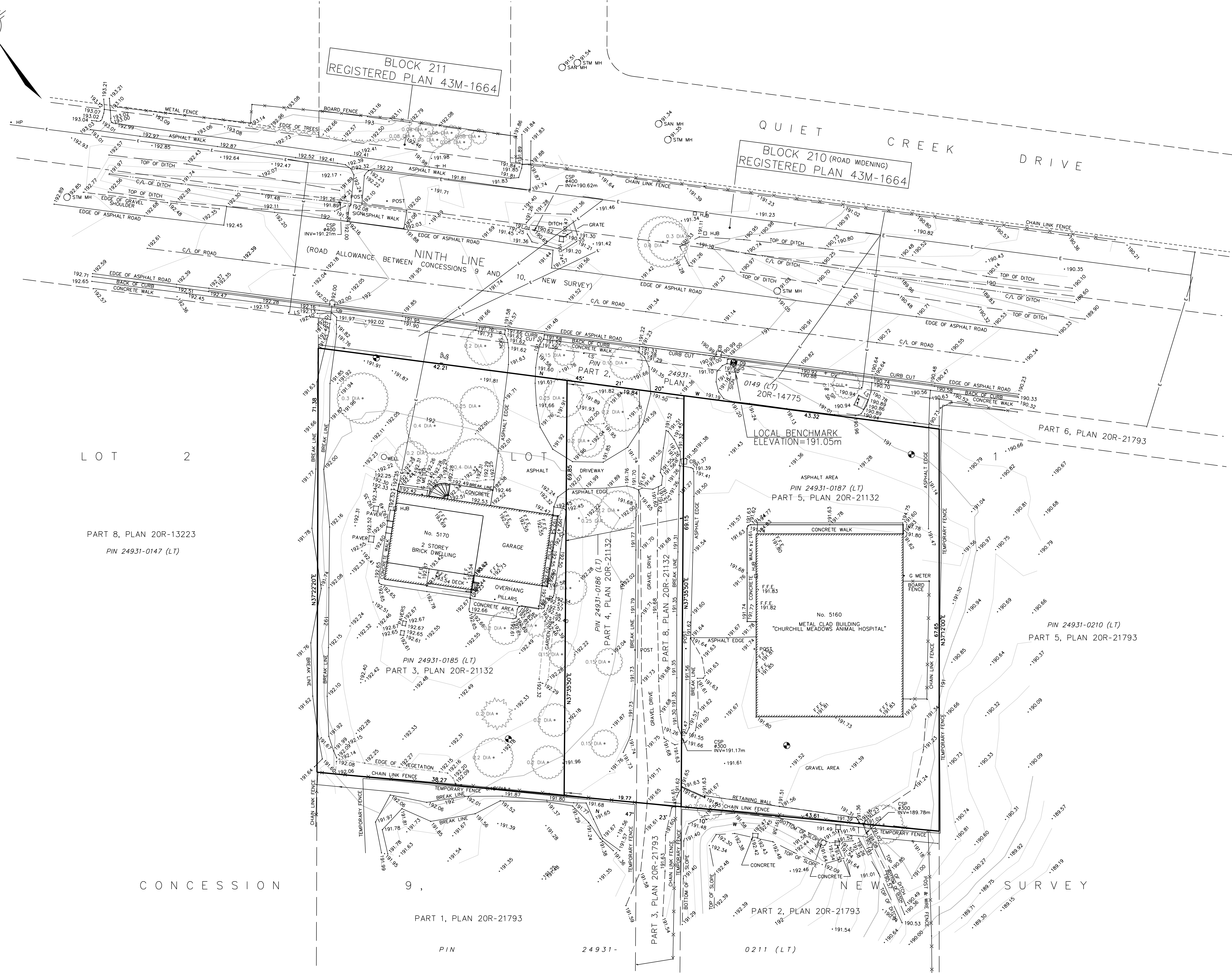
J.D. BARNES LIMITED
METRIC DISTANCES AND COORDINATES SHOWN ON THIS PLAN ARE IN METRES
AND CAN BE CONVERTED TO FEET BY DIVIDING BY 0.3048.

NOTES
BEARINGS ARE UTM GRID, DERIVED FROM REAL TIME NETWORK (RTN) OBSERVATIONS,
UTM ZONE 17, NAD83 (CSRS) (2010.0).
DISTANCES ARE GROUND AND CAN BE CONVERTED TO GRID BY MULTIPLYING BY
THE COMBINED SCALE FACTOR OF 0.999733.

ELEVATION NOTE
ELEVATIONS SHOWN ON THIS PLAN ARE RELATED TO CANADIAN GEODETIC
VERTICAL DATUM, 1978, AND ARE DERIVED FROM THE CITY OF MISSISSAUGA
CONTROL MONUMENT No. 075033001. A BRASS CAP IN CONCRETE CYLINDER,
LOCATED 9m ON EAST SIDE OF THE CENTRELINE OF NINTH LINE, 14m NORTH OF
THE CENTRELINE OF ROADSIDE WAY, HAVING A PUBLISHED ELEVATION OF 193.80m.

LOCAL BENCHMARK
CUT CROSS IN THE CONCRETE SIDE WALK ON THE SOUTH SIDE OF THE
MIDDLE ENTRANCE INTO THE SUBJECT PROPERTY, 2.3m WEST OF THE SIGN
SHOWN ON THE FACE OF THE PLAN.
ELEVATION = 191.05 METRES

- LEGEND**
- CB DENOTES CATCHBASIN
 - CB DENOTES SINGLE CATCHBASIN
 - HJB DENOTES HYDRO JUNCTION BOX
 - G METER DENOTES GAS METER
 - SP DENOTES STAND PIPE
 - + GV DENOTES GAS VALVE
 - SAN MH DENOTES SANITARY MANHOLE
 - STM MH DENOTES STORM MANHOLE
 - HP DENOTES HYDRO POLE
 - LS DENOTES LIGHT STANDARD
 - H DENOTES FIRE HYDRANT
 - WELLS DENOTES WELL
 - MW DENOTES MONITORING WELL
 - BM DENOTES BENCH MARK
 - CSP DENOTES CORRUGATED STEEL PIPE
 - MB DENOTES MAIL BOX
 - E DENOTES OVERHEAD HYDRO CABLE
 - DENOTES CONIFEROUS TREE
DIA=DIAMETER OF TRUNK IN METRES
 - DENOTES DECIDUOUS TREE
DIA=DIAMETER OF TRUNK IN METRES



BEFORE DIGGING, UNDERGROUND SERVICES SHOULD BE LOCATED ON
SITE BY THE RESPECTIVE AGENCIES.

IT IS THE RESPONSIBILITY OF THE CONTRACTOR TO VERIFY THAT
LOCAL BENCHMARKS HAVE NOT BEEN ALTERED OR DISTURBED AND
THAT THE RELATIVE ELEVATIONS AGREE WITH THE INFORMATION
SHOWN ON THIS PLAN.

PRIMARY CONTOURS ARE AT 1.00m INTERVALS.
SECONDARY CONTOURS ARE AT 0.25m INTERVALS.

BOUNDARY INFORMATION IS COMPILED FROM AVAILABLE PAPER RECORDS,
AND HAS BEEN VERIFIED BY ACTUAL FIELD MEASUREMENTS.

SURVEY COMPLETED ON THE 2nd DAY OF OCTOBER, 2021.

J.D. BARNES SURVEYING
LIMITED
LAND INFORMATION SPECIALISTS
401 WHEELABRATOR WAY, SUITE A, MILTON, ON L9T 3C1
T: (905) 875-9955 F: (905) 875-9956 www.jdbarnes.com

DRAWN BY: MB	CHECKED BY: SP	REFERENCE NO.: 21-30-775-00-A
FILE: G:\21-30-775\00\Drawings\21-30-775-00-A.dgn		DATED: 10/12/2021