

- LEGEND**
- SANITARY SEWER AND MANHOLE
 - SANITARY SEWER AND MANHOLE (B.O.)
 - EXISTING SANITARY SEWER AND MANHOLE
 - FUTURE SANITARY SEWER AND MANHOLE

- | | |
|-----------------|-----------------------|
| 0.50ha | ← DRAINAGE AREA (Ha.) |
| 10 UNITS | ← PERSONS PER UNIT |
| 3.50 PPU | ← POPULATION |
| 35 | |
- DRAINAGE AREA BOUNDARY
 - EXTERNAL DRAINAGE AREA BOUNDARY
 - LIMIT OF PROPOSED R.O.W.
 - EXTERNAL WORKS

LOCAL BENCHMARK:
CUT CROSS IN THE CONCRETE SIDEWALK ON THE SOUTH SIDE OF THE MIDDLE ENTRANCE INTO THE SUBJECT PROPERTY, 2.3m WEST OF THE SIGN SHOWN ON THE FACE OF THE PLAN. ELEVATION = 191.05 METERS.

5			
4			
3			
2			
1	ISSUED FOR FIRST ZONING SUBMISSION	NOV. 2021	S.R.
No.	REVISION	DATE	BY

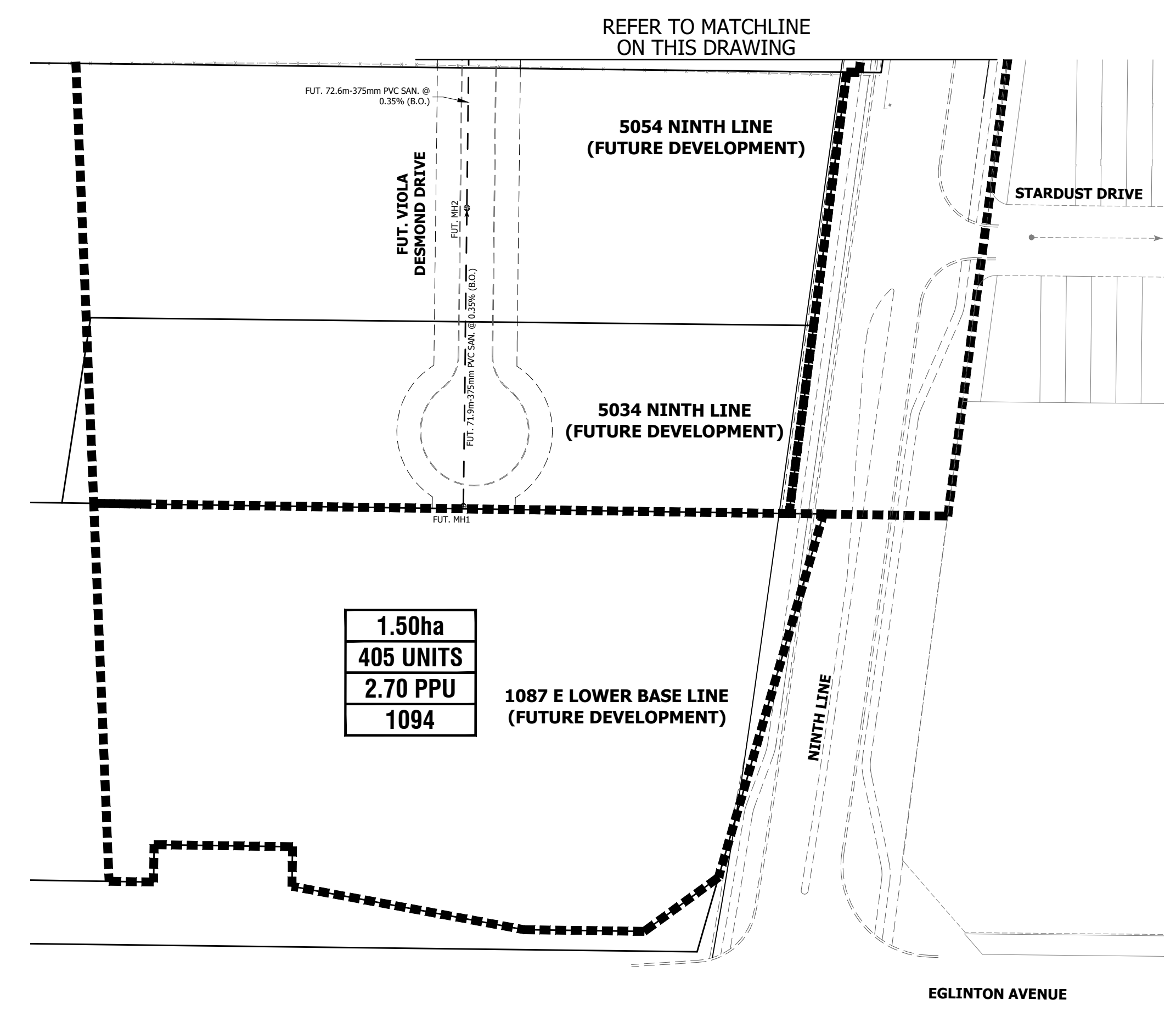
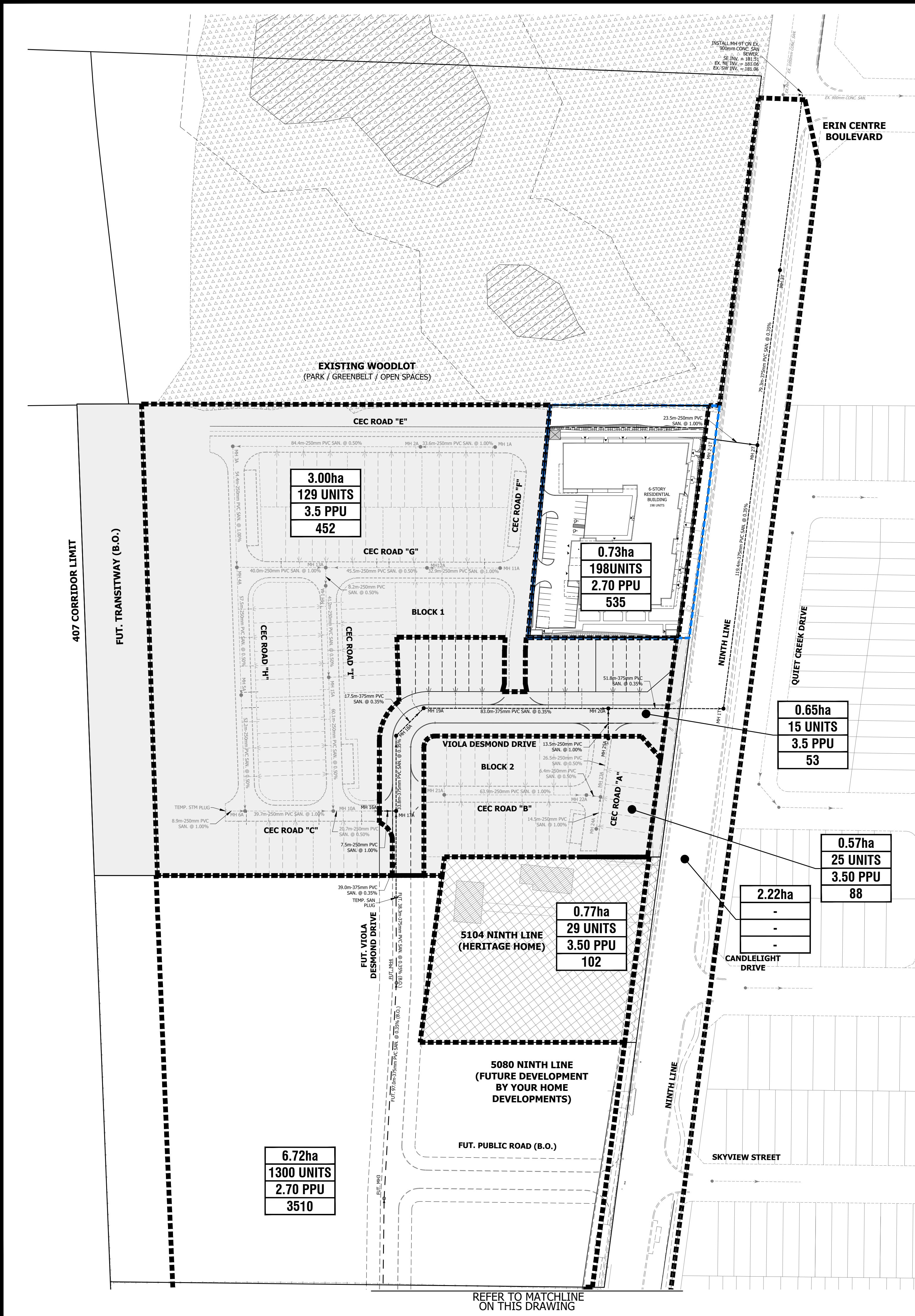
URBANTECH® Consulting
A Division of Leighton-Zac Ltd.
3760 14th Avenue, Suite 301,
Markham, ON L3R 3T7
TEL 905.946.9461 • urbantech.com

5160-5170 NINTH LINE
MATTAMY (5150 NINTH LINE) LIMITED 7880 KEELE STREET VAUGHAN, ON, L4K 4G7 (905)-907-8888
KORSIAK URBAN PLANNING 277 LAKESHORE ROAD EAST OAKVILLE, ON, L6J 1H9 (905)-257-0227



MISSISSAUGA
SANITARY DRAINAGE PLAN
INTERNAL & EXTERNAL AREAS

PROJECT #:	21-680	DRAWING:	303
DESIGNED:	Z.K.	CHECKED:	S.R.
DRAWN:	Z.K.	DATE:	OCTOBER 2021
SCALE:	1:500		



REFER TO MATCHLINE ON THIS DRAWING