

**TERRASEED NOTES:**

- Areas to be seeded with naturalization mix shall receive an application of naturalization seed at the rate of 25-30 kg/hectare or 2 kg/100m<sup>2</sup> for spot applications, in the following mixture:  
**Wildflower Seed Mixture**  
 Black Eyed Susan (*Rudbeckia hirta*) 10%  
 Boneset (*Eupatorium perfoliatum*) 5%  
 Canada anemone (*Anemone canadensis*) 5%  
 Canada Wild Rye (*Elymus canadensis*) 5%  
 Foam Flower (*Tiarella cordifolia*) 10%  
 Hairy Beardtongue (*Penstemon hispidus*) 5%  
 Narrow-Leaved Vervain (*Verbena simplex*) 5%  
 Peary Everlasting (*Anaphalis margaritacea*) 10%  
 Sand Dropseed (*Sporobolus corymbosus*) 10%  
 Showy Tick Trefoil (*Desmodium canadense*) 10%  
 Spotted Bee Balm (*Monarda punctata*) 5%  
 Wild Bergamot (*Monarda fistulosa*) 10%  
 Wild Columbine (*Aquilegia canadensis*) 5%  
 Wild Lupine (*Lupinus perennis*) 5%

\*apply with Annual Oats (*Avena sativa*) nursecrop at 22kg/hectare.  
 Supplied by:  
 Ontario Seed Company Ltd. (OSCL) - or approved equal  
 P: 1-519-886-0557  
 W: www.osclseeds.com

- Contractor responsible for soil test to determine fertilizer rates. Results of soil test shall be provided to the Landscape Architect for review and approval.
- Hydraulic mulch to be approved by the Landscape Architect shall be applied at the rate of 2100kg per hectare.
- The contractor shall not carry out the work under adverse weather conditions such as high wind, frozen ground or ground covered with snow, ice or standing water.
- Grade sub-grade, eliminate uneven areas and low spots, ensure positive drainage. Remove debris, roots, branches, stones in excess of 50mm diameter and other deleterious materials. Remove subsoil that has been contaminated with oil, gasoline or calcium chloride, dispose of removed material as directed by Landscape Architect.
- Grade seed bed for terraseeding to a uniform surface and remove vegetation which may interfere with seeding operations. Loosen soil to depth of 25mm minimum and remove stones and foreign material which protrude more than 75mm above the surface.
- All areas to be terraseeded to receive 150mm of topsoil.
- Seeded areas to be maintained by contractor ensuring adequate water, fertilizer, maintenance and repair until seeded areas are properly established. Areas seeded in fall will be accepted in following spring, one month after start of growing season provided acceptance conditions are fulfilled.

**LANDSCAPE NOTES:**

- All work to be carried out in accordance with by-laws and codes having jurisdiction over site location.
- Complete all work to the satisfaction of the Landscape Architect.
- Report any changes, discrepancies or substitutions to the Landscape Architect for review. Obtain approval from the Landscape Architect before proceeding.
- It is the contractor's responsibility to determine existing service locations.
- Exact locations of plant material will be determined by placement of site services such as hydrant vaults, meters, utilities roof rain water leaders, driveways, light standards, etc.
- All plant material locations to be staked or marked out and approved by Landscape Architect prior to installation.
- Supply all plant material in accordance with the Canadian Standards for Nursery Stock (8th ed.).
- Install plant material according to details shown.
- Supply and place mulch in accordance with Canadian Landscape Standard (Section 10, Mulching). Disturbed soil areas around trees and shrubs are to be covered with shredded conifer bark mulch such as Cedar Bark Mulch by All Treat Farms or Classic Cedar Bark by Gro-Bark, or approved equivalent. Alternative mulches must be approved by the Landscape Architect.
- Contractor to utilize layout dimensions where provided.
- Provide planting bed area as noted on the drawing or to accommodate mature size of plant material.
- All support systems must be removed by the contractor at time of final acceptance. No extras will be paid to complete this work.
- Supply and place topsoil in accordance with Canadian Landscape Standard (Section 4, Grading & Drainage and Section 6, Growing Medium) to a minimum depth of 150mm unless otherwise specified.
- Supply and place sod in accordance with Canadian Landscape Standard (Section 7, Lawns & Grass and Section 8, Turfgrass Sod/unless otherwise specified).
- Supply and place seed in accordance with Canadian Landscape Standard (Section 4, Grading & Drainage and Section 6, Growing Medium) unless otherwise specified. All 5:1 or greater slopes to be seeded with facier. Contractor to provide necessary erosion control protection as required to ensure soil stabilization and proper seed germination.
- All dimensions in meters unless otherwise noted.
- If discrepancies arise between plant material count shown on drawing and plant list, the drawing shall be considered correct.
- Contractor to provide minimum one (1) year warranty (including trees on municipal property) from date accepted on all work unless otherwise specified.
- Any site plan or grading and servicing shown is for information only. Refer to approved drawings.
- Not for construction unless stamped, signed and dated by Landscape Architect.
- All plant material to be planted a minimum of 1.0m from any swales or ditches.
- For grading and servicing information refer to the consulting Engineer's drawings.
- For lighting information and power distribution refer to the electrical consultant's drawings.

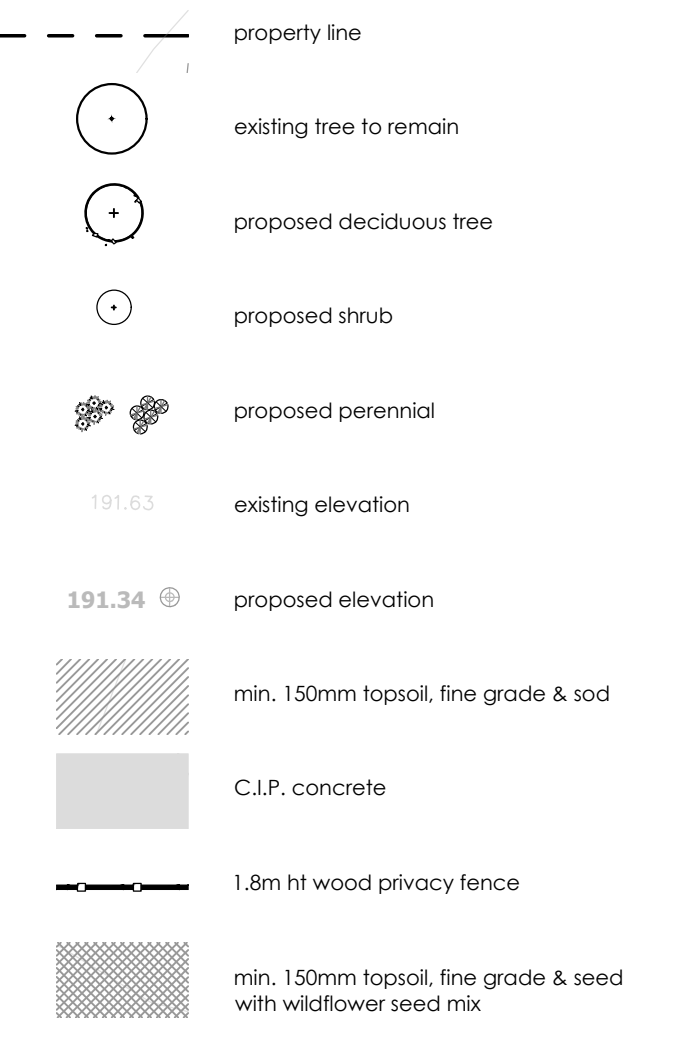
**IRRIGATION NOTES:**

- The contractor is to design and install an irrigation system to efficiently irrigate all planting beds shown on plan. Plumbing and electrical work shall conform to the prevailing codes, and unless specified otherwise, the construction of the irrigation system shall include the furnishing, installing and testing of all irrigation equipment, along with the restoration of the site to its original condition.
- The design and layout is to be approved by the landscape architect and/or contract administrator.
- The irrigation system will provide complete and appropriate coverage of the turf and planting areas shown on the drawings. Sprinklers are to direct water away from roads, sidewalks, driveways and buildings. The entire system shall be guaranteed to be complete and function perfectly in every detail for a period of one year from the date of its acceptance.
- All work shall be carried out in accordance with by-laws and codes having jurisdiction over site location.
- It is the responsibility of the plan user to inform themselves of the exact location of all underground and overhead utilities and structures before commencing the work.
- All spray heads shall have pressure regulating devices.
- The client shall be responsible for provision of 110 VAC power within 1 meter of the irrigation controller location.
- The irrigation contractor shall be responsible for the supply and installation of a 2" backflow preventer to the local plumbing code inside of the utility room.
- Mechanical Contractor to provide a 2" size water source complete with stub at the point of connection.
- Irrigation design is based on a static water pressure of 65 psi at the point of connection.

**KEY MAP - N.T.S.**



**LEGEND**



**NOT FOR CONSTRUCTION**  
 ISSUED FOR REVIEW & COMMENTS ONLY

**REVISIONS/ SUBMISSIONS**

#	DATE	DESCRIPTION
1	2021-10-29	Issued for coordination
2	2021-11-05	Issued for coordination
3	2021-11-11	Issued for submission



**CLIENT**  
 Branthaven Ninth Line Inc.  
**MUNICIPALITY**  
 City of Mississauga

**PROJECT**  
 5160-5170 Ninth Line

**MUNICIPAL FILE NUMBER**

**SHEET**  
 Landscape Plan **L-3**

**adeso design inc.**  
 landscape architecture

218 Locke Street South, 2nd Floor  
 Hamilton, ON L8P 4B4  
 T: 905.526.8876  
 www.adesodesigninc.ca

**PLANT SCHEDULE**

TREES	BOTANICAL NAME	COMMON NAME	SIZE	COND.	MATURE HT. (M)	MATURE SPR. (M)	O.C. (M)	REMARKS
4	<i>Acer saccharum</i>	Sugar Maple	50mm Cal.	W.B.	30.0	18.0	As Shown	Native to Ontario
3	<i>Betula utilis jacquemontii</i>	Whitebarked Himalayan Birch	50mm Cal.	W.B.	10.0	5.0		
5	<i>Celtis occidentalis</i>	Common Hackberry	50mm Cal.	W.B.	15.0	15.0	As Shown	Native to Ontario
2	<i>Ostrya virginiana</i>	Ironwood	50mm Cal.	W.B.	10.0	7.0	As Shown	Native to Ontario
7	<i>Quercus rubra</i>	Red Oak	50mm Cal.	W.B.	18.0	17.0	As Shown	Native to Ontario
3	<i>Tilia americana</i>	American Linden	50mm Cal.	W.B.	20.0	13.0	As Shown	Native to Ontario
<b>SHRUBS</b>	<b>BOTANICAL NAME</b>	<b>COMMON NAME</b>	<b>SIZE</b>	<b>COND.</b>	<b>MATURE HT. (M)</b>	<b>MATURE SPR. (M)</b>	<b>O.C. (M)</b>	<b>REMARKS</b>
13	<i>Amelanchier canadensis</i>	Canadian Serviceberry - Multifem	150cm Ht.	#15 cont.	6.0	4.0	As Shown	Multistem Form. Native to Ontario
20	<i>Berberis thunbergii</i> 'Ruby Carouse'	Ruby Carouse' Barberry	40cm	#3 cont.	0.80	0.80	0.70	
30	<i>Cornus sanguinea</i> 'Winter Beauty'	Winter Beauty Dogwood	40cm	#3 cont.	1.25	1.5	1.3	
31	<i>Cornus sericea</i> 'Arctic Fire'	Arctic Fire Dogwood	50cm	#3 cont.	1.0	1.0	0.80	
16	<i>Cotoneaster dammeri</i> 'Coral Beauty'	Coral Beauty Cotoneaster	30cm	#3 cont.	0.40	1.5	1.3	
33	<i>Hydrangea arborescens</i> 'Incrediball'	Incrediball Hydrangea	30cm	#3 cont.	1.25	1.25	1.1	
32	<i>Juniperus horizontalis</i> 'Hughes'	Hughes Creeping Juniper	40cm	#3 cont.	0.30	1.5	1.25	
36	<i>Taxus cuspidata</i> 'Nana'	Dwarf Japanese Yew	40cm	#3 cont.	1.0	1.5	1.25	
<b>GRASSES</b>	<b>BOTANICAL NAME</b>	<b>COMMON NAME</b>	<b>SIZE</b>	<b>COND.</b>	<b>MATURE HT. (M)</b>	<b>MATURE SPR. (M)</b>	<b>O.C. (M)</b>	<b>REMARKS</b>
67	<i>Calamagrostis x acutiflora</i> 'Karl Foerster'	Karl Foerster Feather Reed Grass		#1 cont.	1.25	0.60	0.50	
48	<i>Deschampsia cespitosa</i>	Tufted Hair Grass		#1 cont.	0.70	0.70	0.60	Native to Ontario
<b>PERENNIALS</b>	<b>BOTANICAL NAME</b>	<b>COMMON NAME</b>	<b>SIZE</b>	<b>COND.</b>	<b>MATURE HT. (M)</b>	<b>MATURE SPR. (M)</b>	<b>O.C. (M)</b>	<b>REMARKS</b>
148	<i>Nepeta x faassenii</i> 'Cat's Meow'	Cat's Meow Catmint		#1 cont.	0.40	0.70	0.60	
<b>GROUND COVERS</b>	<b>BOTANICAL NAME</b>	<b>COMMON NAME</b>	<b>SIZE</b>	<b>COND.</b>	<b>MATURE HT. (M)</b>	<b>MATURE SPR. (M)</b>	<b>O.C. (M)</b>	<b>REMARKS</b>
35	<i>Euonymus fortunei</i> 'Coloratus'	Purpleleaf Wintercreeper	46cm	#2 cont.	0.30	1.25	0.80	

Project: 2021-177, 5160-5170 Ninth Line, Mississauga, Ontario. Date: 2021-11-11. Scale: 1:250.0. Project: 2021-177, 5160-5170 Ninth Line, Mississauga, Ontario. Date: 2021-11-11. Scale: 1:250.0. Project: 2021-177, 5160-5170 Ninth Line, Mississauga, Ontario. Date: 2021-11-11. Scale: 1:250.0.