

NOTE:
TO BE USED AS A GUIDELINE ONLY.
NOT TO SCALE. REMOVE CITY TITLE BLOCK
AND REDRAW TO REPRESENT SITE SPECIFIC
CONDITIONS. ALL SITE SPECIFIC CONDITIONS
ARE TO BE CONFIRMED BY THE PROJECT
CONSULTANT.



NOTE:
TO BE USED AS A GUIDELINE ONLY.
NOT TO SCALE. REMOVE CITY TITLE BLOCK
AND REDRAW TO REPRESENT SITE SPECIFIC
CONDITIONS. ALL SITE SPECIFIC CONDITIONS
ARE TO BE CONFIRMED BY THE PROJECT
CONSULTANT.



NOTE:
TO BE USED AS A GUIDELINE ONLY.
NOT TO SCALE. REMOVE CITY TITLE BLOCK
AND REDRAW TO REPRESENT SITE SPECIFIC
CONDITIONS. ALL SITE SPECIFIC CONDITIONS
ARE TO BE CONFIRMED BY THE PROJECT
CONSULTANT.



proposed planting bed - see landscape plan for layout

150mm thick poured concrete paving

score lines as shown on Plan

150 min.

MINIMUM 1% SLOPE AWAY FROM SITE

min. 200mm granular compacted to min. 200mm

subgrade compacted to min. 200mm

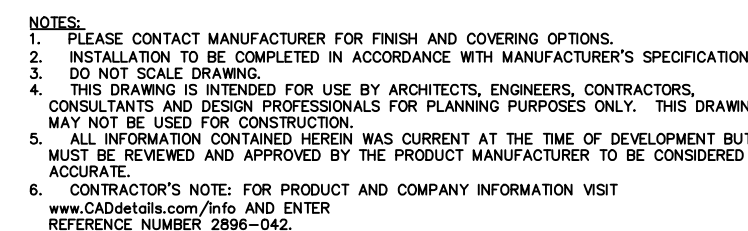
1. All work to be done in accordance with the standards and specifications of the municipality and Ontario Provincial Standards, unless noted otherwise.
2. All concrete to be 32MPa in 28 days with $\pm 1\%$ air entrainment unless otherwise stated.
3. Cast-in-place concrete to be sawcut in panels not exceeding 3.0m in any direction, unless otherwise noted. Sawcuts to be 3.5mm wide by 30mm deep and to be made within 16 hours of pouring concrete.
4. All CIP concrete surfaces to receive finish as specified on plan. All CIP concrete surfaces to receive acrylic concrete and seal.

1. Import color with surface colour hardener according to Bonamite methods. Natural or synthetic mineral oxides to comply with CSA A23.1 AND OPSS 1350.
2. Acceptable Products:
Surface Colour Hardener:

Natural Grey
by The Bonamite Company, or approved equal.
3. Contractor to provide 1m x 1m sample on site for approval by Owner and/or Landscape Architect.
4. The Bonamite Company:
6789 Auburn Folsom Road, #108
Granite Bay, CA 95746
tel, (303) 369-1115 fax, (303) 291-0282
www.bonamite.com



DIMENSIONS: 0.82m x 0.25m x 0.17m
MATERIAL: Metal
COLOUR: TBD
QUANTITY: 5
MANUFACTURER: Equiparc
E: info@equiparc.com
P: 1-800-363-9264



9
L-4

150mm thick poured concrete paving

score lines as shown on Plan

filter sheet Sf by ZinCo Inc. or approved equal

MINIMUM 1% SLOPE AWAY FROM BUILDING

150 mm

SLAB SLOPES TO DRAIN

min. 50mm High Performance Bedding material (HPB)

note: no filter sheet needed above Floradrain when using HPB

Floradrain FD 40-E by ZinCo Inc. or approved equal

protection board & waterproofing as per architectural details

roof slab, refer to architectural drawings

Note:
Detail to be reviewed and approved by structural engineer prior to construction.
For roof slab & waterproofing details refer to architectural & engineering drawings.

$$\frac{5}{L-4}$$

remove perennials from all pots or containers

75mm depth shredded cedar bark mulch by Gro-bark Ltd. All Treat Farms or approved equivalent

provide clean and continuous spade cut along all bed edges

fill with prepared soil mix (see planting notes) compact topsoil to eliminate air pockets and settlement

SLAB SLOPES TO DRAIN

filter sheet SF by ZnCo Inc or approved equal

Floradrain FD 40-E by ZnCo Inc or approved equal

protection board and water proofing per architectural details

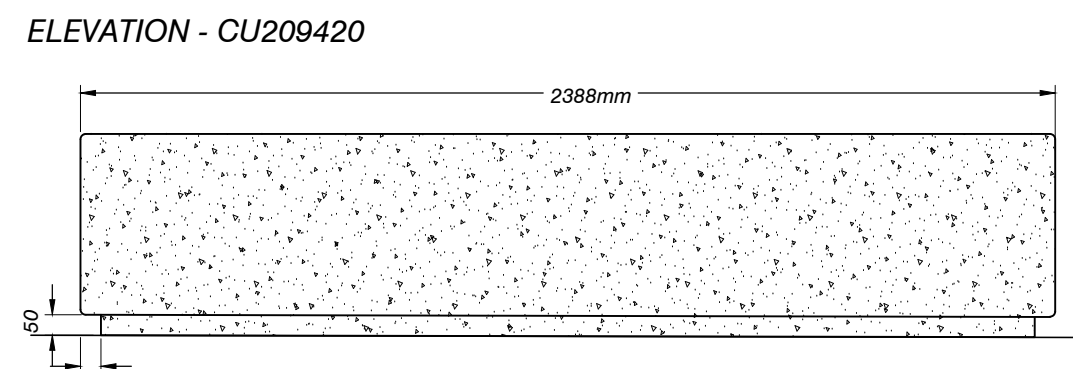
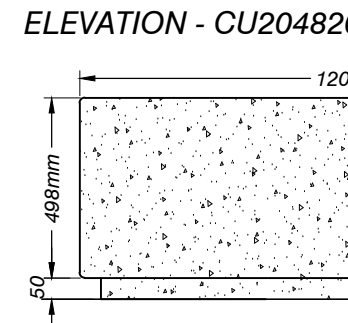
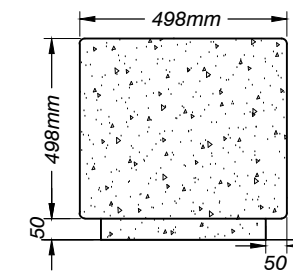
roof slab as per architectural details

250
200
50

1. Detail to be reviewed and approved by structural engineer prior to construction. Refer to structural engineering drawings for underground garage wall and roof slab details.

498mm

CUBIC BENCHES - CU209420, CU204820, & CU202020 BY ED'S CONCRETE (OR APPROVED EQUAL)



SCALE: NTS

Diagram illustrating the cross-section of a roof assembly, showing the following components and dimensions:

- Sod:** Sod with min. 150mm depth above drainage medium, provide clean and continuous spade cut along edges.
- Drainage Medium:** Layer above the filter sheet.
- Filter Sheet:** Filter sheet SF by ZinCo Inc or approved to wrap up side of adjacent paving mat.
- Drainage Layer:** Layer below the filter sheet.
- Concrete Slab:** Slab slopes to drain.
- Dimensions:**
 - 200 (Sod depth)
 - 200 (Drainage medium depth)
 - 50 (Filter sheet depth)
- Labels:**
 - adjacent concrete paving
 - SLAB SLOPES TO DRAIN
 - fill with prepared soil mix (see planting notes) compact topsoil to eliminate air pockets and settlement
 - Floradrain FD 40-E by ZinCo Inc or approved for protection board and water proofing per architectural details
 - roof slab as per architectural & structural

SCALE: NT

1. Soil mixture: four (4) parts native soil, one (1) part well rotted compost. If existing soil is not suitable provide triple mix topsoil or approved equal.
2. Sauer soil bed soaked with water and mulched immediately following planting.
3. Massed shrubs shall be planted in continuous mulched beds unless otherwise noted.
4. Staking schedule:
 - > 30mm caliper size/ 2500mm ht. - one stake
 - > 30mm caliper size/ 2500mm ht. - two stakes
 - > 70mm caliper - three stakes
5. All support systems must be removed once tree is established.
6. All trees to be straight and planted vertically regardless of size.
7. Top of root flare shall be positioned 50mm above grade.
8. The following depths of soil are required for planting:
 - 15cm topsoil for soil;
 - 30cm of topsoil for perennials;
 - 45cm of topsoil for shrubs;
 - 90cm of topsoil for trees;

#	DATE	DESCRIPTION
1	2021-10-29	Issued for coordination
2	2021-11-05	Issued for coordination
3	2021-11-11	Issued for submission

CLIENT
Branthaven Ninth Line Inc.

MUNICIPALITY
City of Mississauga

PROJECT
5160-5170 Ninth Line

MUNICIPAL FILE NUMBER

SHEET

Details

adesso design inc.
landscape architecture

218 Locke Street South, 2nd Floor
Hamilton, ON L8P 4B4
t. 905.526.8876
www.adessodesigninc.ca