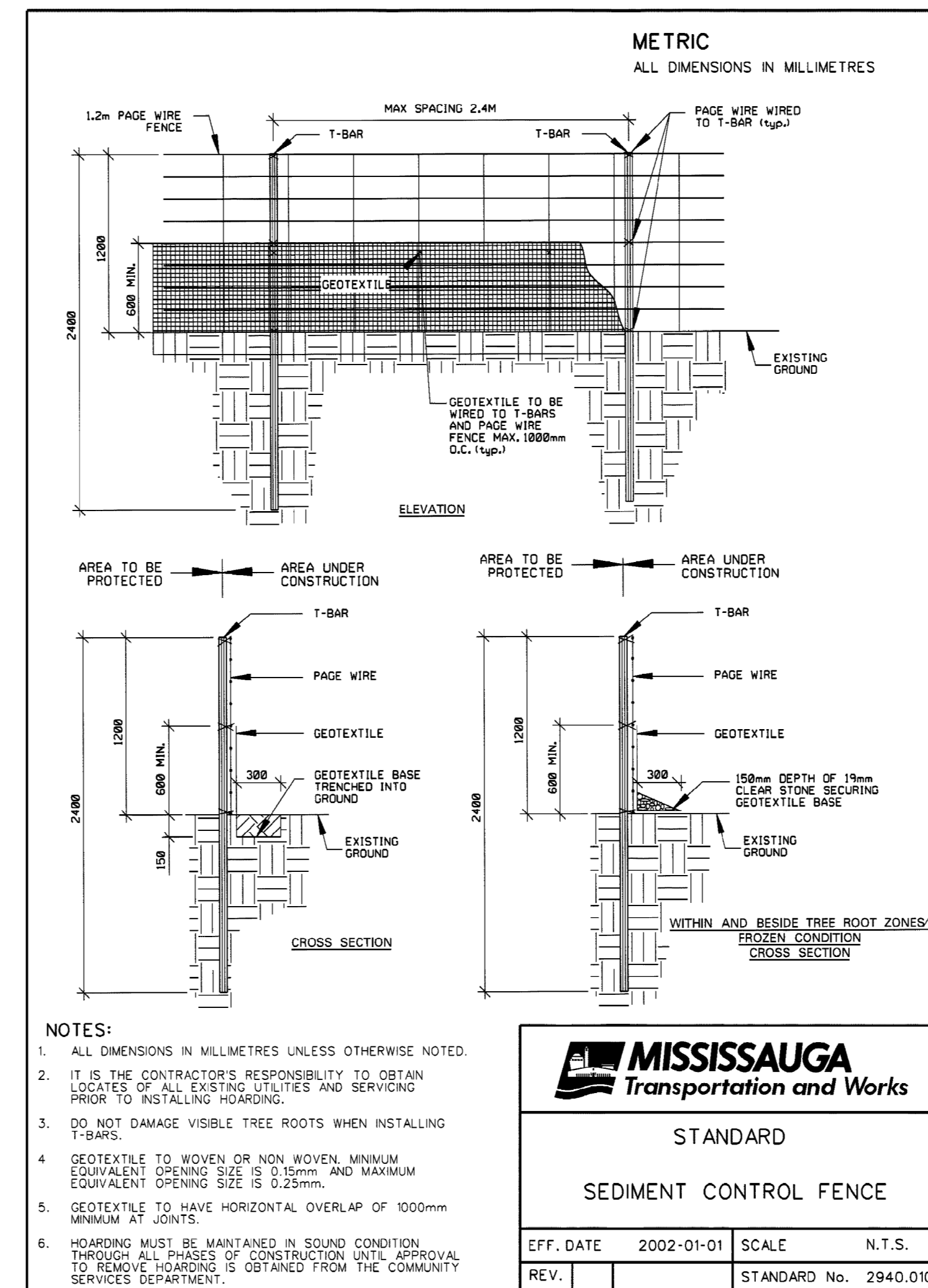


Legend

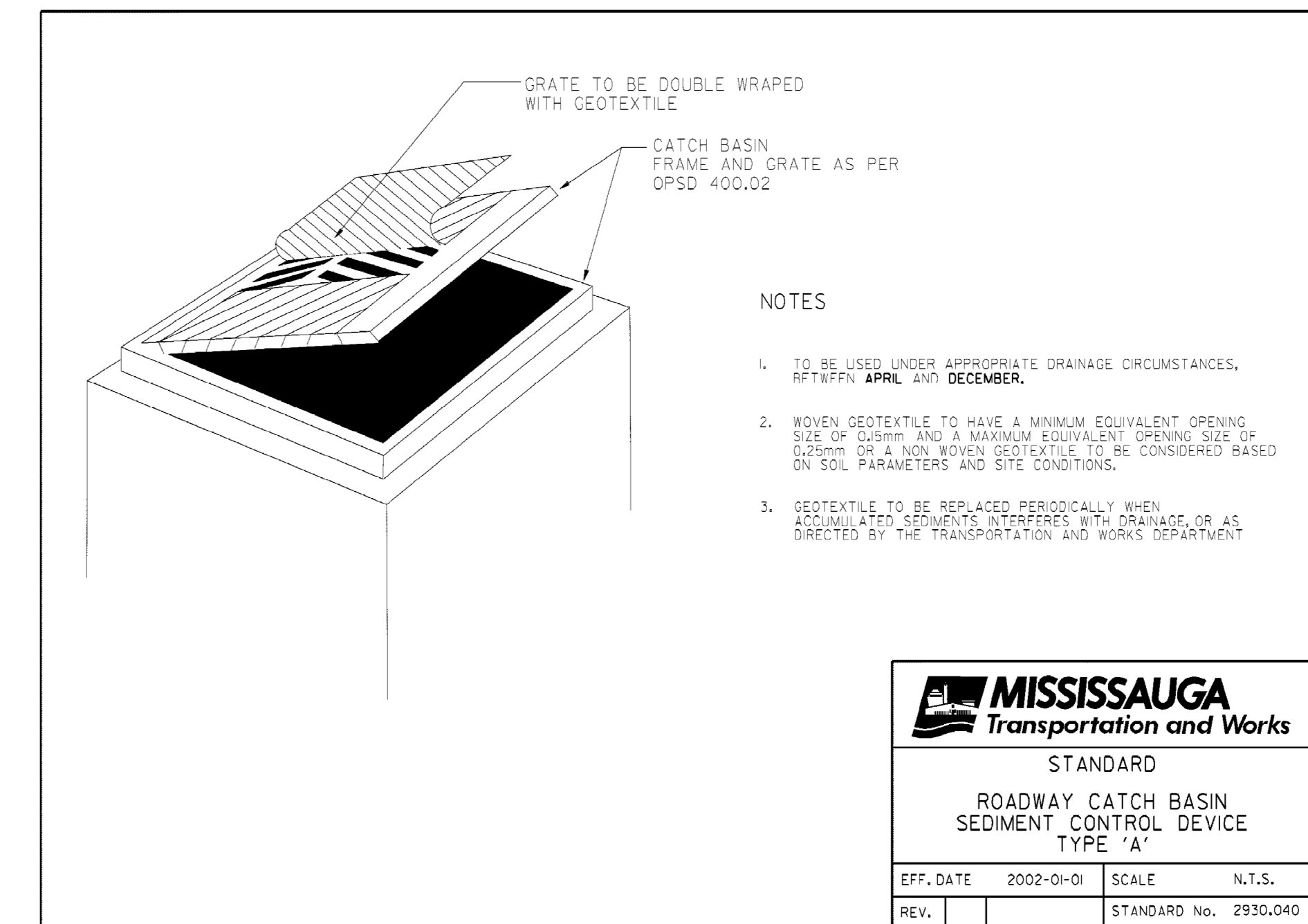


- NOTES:**
1. ALL DIMENSIONS IN MILLIMETRES UNLESS OTHERWISE NOTED.
 2. IT IS THE CONTRACTOR'S RESPONSIBILITY TO OBTAIN LOCATIONS OF ALL EXISTING UTILITIES AND SERVICING PRIOR TO INSTALLING HOARDING.
 3. DO NOT DAMAGE VISIBLE TREE ROOTS WHEN INSTALLING T-BARS.
 4. GEOTEXTILE TO WOVEN OR NON WOVEN MINIMUM EQUIVALENT OPENING SIZE IS 0.25mm AND MAXIMUM EQUIVALENT OPENING SIZE IS 0.25mm.
 5. GEOTEXTILE TO HAVE HORIZONTAL OVERLAP OF 1000mm MINIMUM AT JOINTS.
 6. HOARDING MUST BE MAINTAINED IN SOUND CONDITION THROUGHOUT ALL PHASES OF CONSTRUCTION AND APPROVAL TO REMOVE HOARDING IS OBTAINED FROM THE COMMUNITY SERVICES DEPARTMENT.

MISSISSAUGA
Transportation and Works

STANDARD
SEDIMENT CONTROL FENCE

EFF. DATE	2002-01-01	SCALE	N.T.S.
REV.		STANDARD No.	2840.010



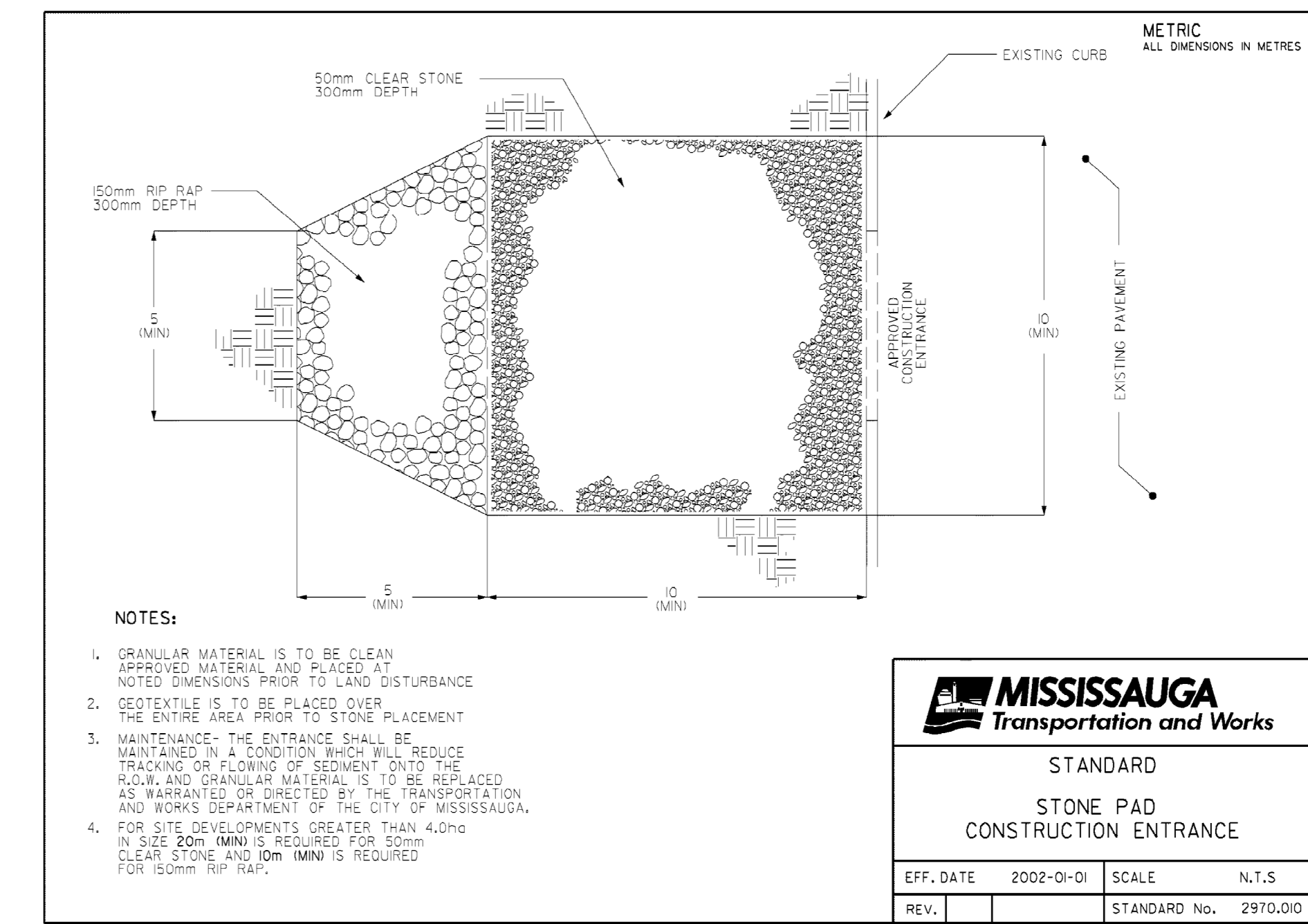
NOTES

1. TO BE USED UNDER APPROPRIATE DRAINAGE CIRCUMSTANCES. APPLICABLE: APRIL 30th DECEMBER.
2. WOVEN GEOTEXTILE TO HAVE A MINIMUM EQUIVALENT OPENING SIZE OF 0.25mm AND A MAXIMUM EQUIVALENT OPENING SIZE OF 0.25mm. GEOTEXTILE TO BE CONSIDERED BASED ON SOIL PARAMETERS AND SITE CONDITIONS.
3. GEOTEXTILE TO BE REPLACED PERIODICALLY WHEN REQUIRED. THE DEPARTMENT OF TRANSPORTATION AND WORKS DEPARTMENT.

MISSISSAUGA
Transportation and Works

STANDARD
ROADWAY CATCH BASIN
SEDIMENT CONTROL DEVICE
TYPE 'A'

EFF. DATE	2002-01-01	SCALE	N.T.S.
REV.		STANDARD No.	2930.040



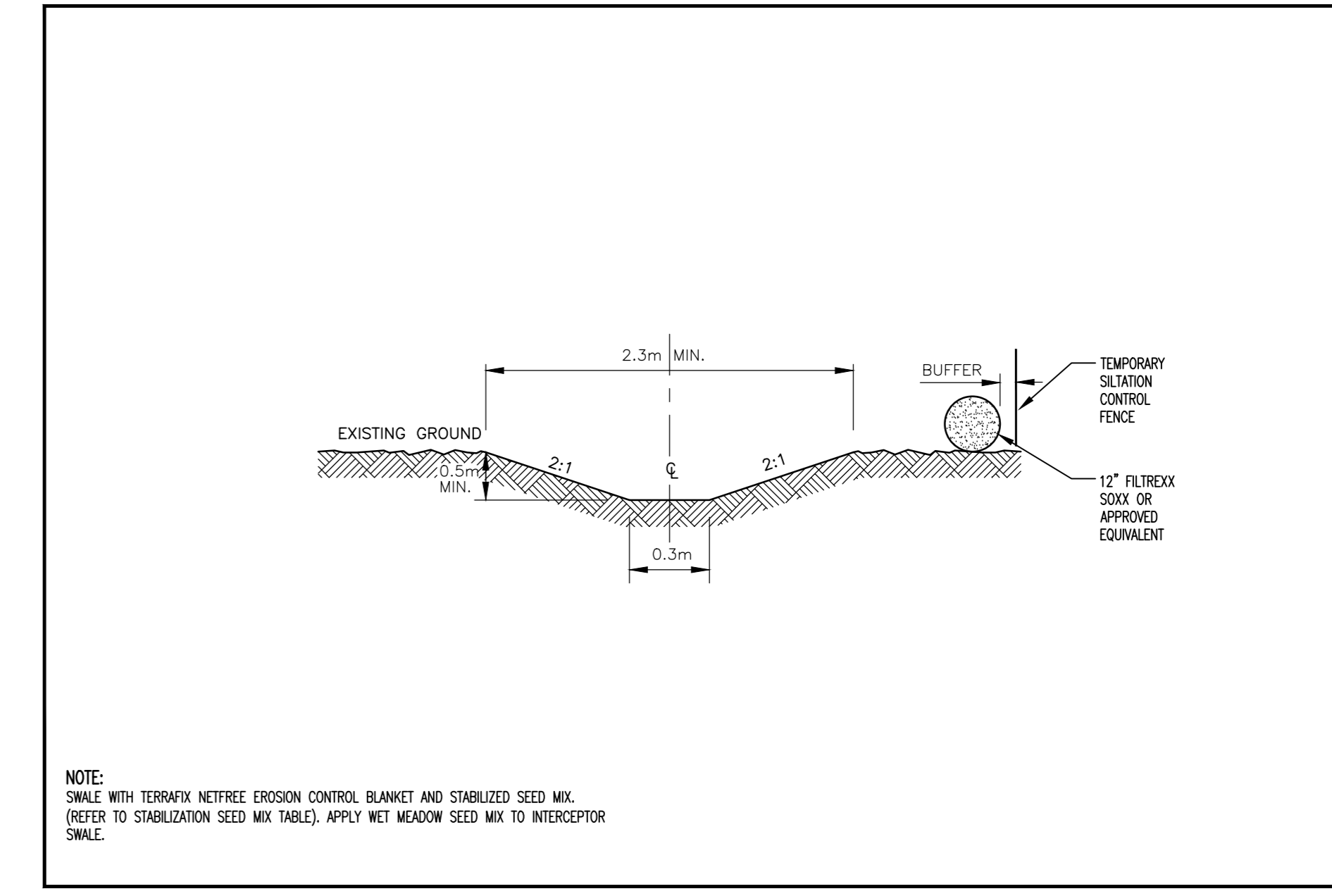
NOTES

1. GRANULAR MATERIAL IS TO BE CLEAN APPROVED MATERIAL AND PLACED TO THE ENTIRE AREA PRIOR TO STONE PLACEMENT.
2. GEOTEXTILE IS TO BE PLACED OVER THE ENTIRE AREA PRIOR TO STONE PLACEMENT.
3. MAINTENANCE: THE ENTRANCE SHALL BE MAINTAINED IN A CONDITION WHICH WILL REDUCE TRACKING OF SEDIMENT AND MATERIAL AS WARRANTED BY THE TRANSPORTATION AND WORKS DEPARTMENT OF THE CITY OF MISSISSAUGA.
4. FOR SITE DEVELOPMENTS GREATER THAN 4.0ha (1.0 AC) STONE AND 0.9m (30") IS REQUIRED FOR 50mm (2") MIN.

MISSISSAUGA
Transportation and Works

STANDARD
STONE PAD
CONSTRUCTION ENTRANCE

EFF. DATE	2002-01-01	SCALE	N.T.S.
REV.		STANDARD No.	2910.010



NOTE:
SWALE WITH TERRACED NETFREE EROSION CONTROL BLANKET AND STABILIZED SEED MIX.
PREFER TO STABILIZATION SEED MIX TABLE; APPLY NET MEADOW SEED MIX TO INTERCEPTOR SWALE.

TEMPORARY INTERCEPTOR SWALE
SCALE: N.T.S.

Notes

Benchmark

Revision	By	Appd	YYYY.MM.DD

Issued	By	Appd	YYYY.MM.DD

Permit/Seal			
-------------	--	--	--

NOT FOR CONSTRUCTION

Client/Project Logo



Client/Project
TRILLIUM HEALTH PARTNERS
NEW MISSISSAUGA HOSPITAL TOWER
PAM 21-323 W7

100 QUEENSWAY WEST & 2250 HURONTARIO ST
MISSISSAUGA ON

Title

EROSION & SEDIMENT CONTROL DETAILS

Project No. 1400 200191 Scale N.T.S.

Revision Sheet Drawing No. 0 of

C-501

C:\Users\jshelton\OneDrive\Documents\Projects\2021\200191\200191-01.dwg
 2021/11/11 10:58 AM