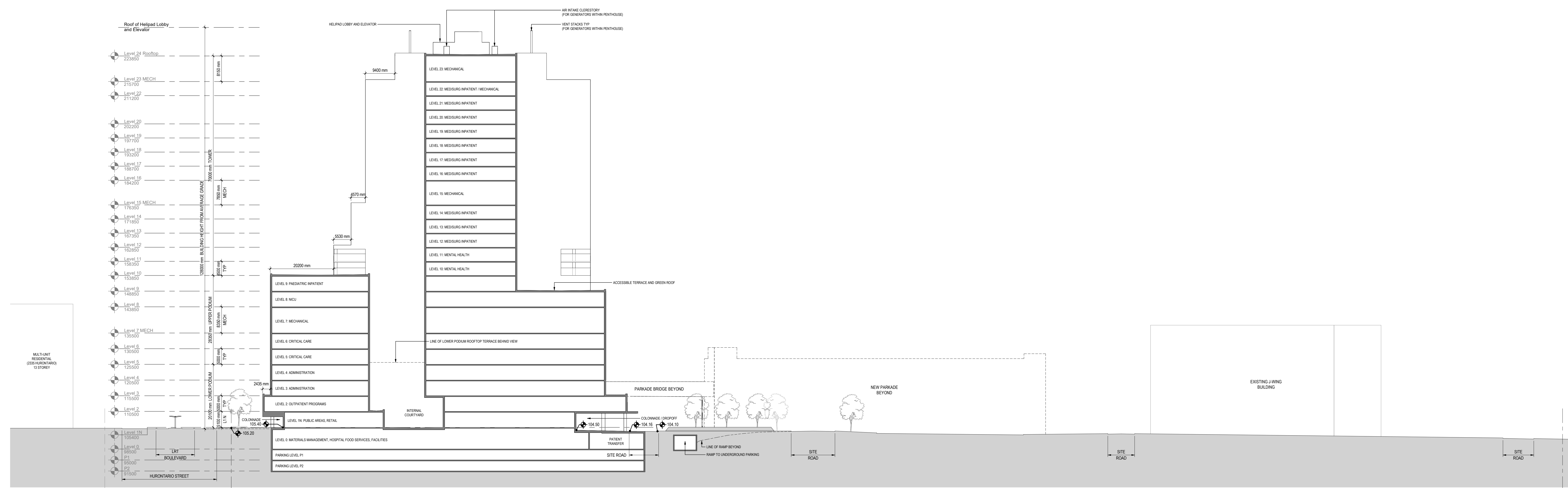


**2 SITE SECTION - NORTH-SOUTH SECTION FACING WEST THROUGH PLAZA ENTRANCE**  
A-640 1:500

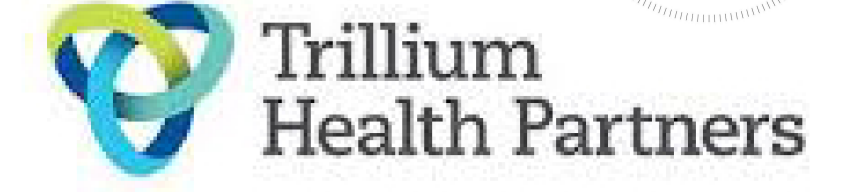
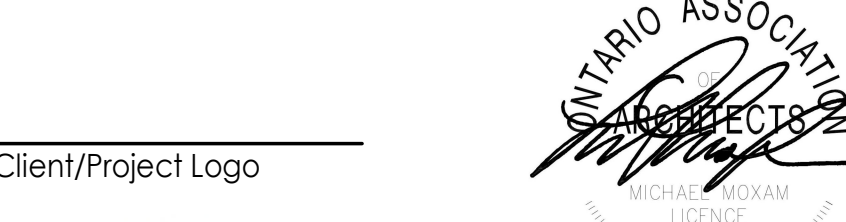


**1 SITE SECTION - EAST-WEST SECTION FACING SOUTH THROUGH L1 RETAIL AREA**  
A-640 1:500

Issue/Revision	By	App'd	YYYY-MM-DD
4			2021-12-06
3			2021-08-06
2			2021-05-31
1			2021-03-04

Issue Status

CONFIDENTIAL PROJECT  
**NOT FOR CONSTRUCTION**



Client/Project  
TRILLIUM HEALTH PARTNERS  
NEW MISSISSAUGA HOSPITAL TOWER  
PAM 21-323 W7

100 QUEENSWAY WEST & 2250 HURONTARIO ST  
MISSISSAUGA ON

Title  
SITE SECTIONS