



Glen Erin Drive Integrated Road Project

Community Meeting #3 (ONLINE)

May 12, 2022



Meeting Purpose



Study Overview



Roundabout Feasibility Review

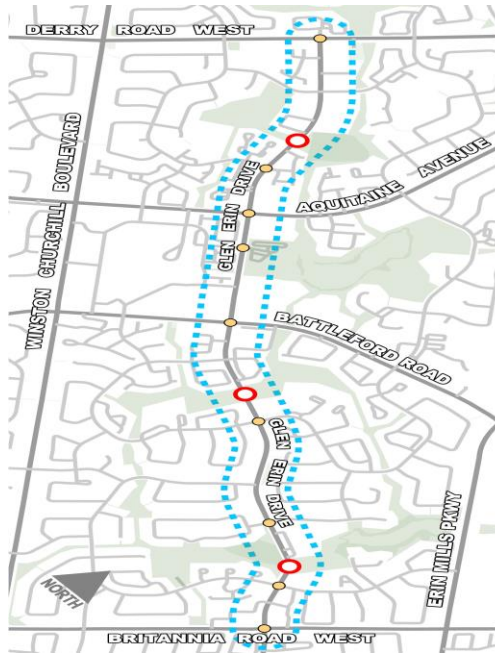


Preferred Preliminary Design Updates; and



Discuss next steps and how to stay informed.

Study Purpose



Legend

- Study Area
- Major Roads
- Minor Roads
- Signalized Intersections
- Bridges



Operational Improvements to the Glen Erin Drive Corridor

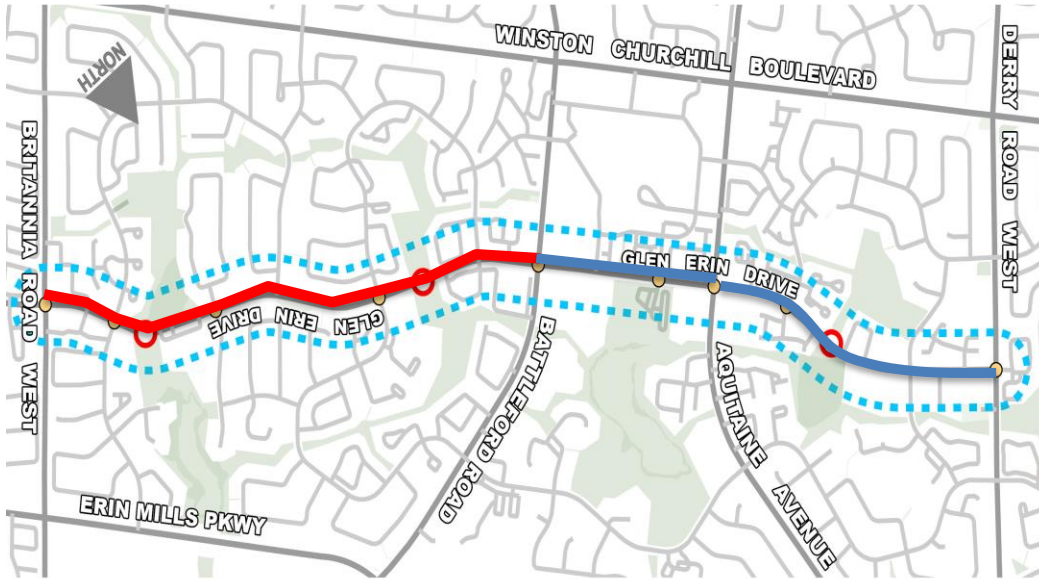



Pavement and Bridges Rehabilitation as well as Safety, Transit, Noise and Active Transportation Improvements




Complete Preliminary Design Phase

Community Meeting #2 – Preferred Concept



 No Parking and Protected Bike Lane (on road)

 Parking with Cycle Track – Adjacent to curb (in boulevard)

DRAFT

Community Meeting #2 – Preferred Concept



Opportunity for centre median treatments



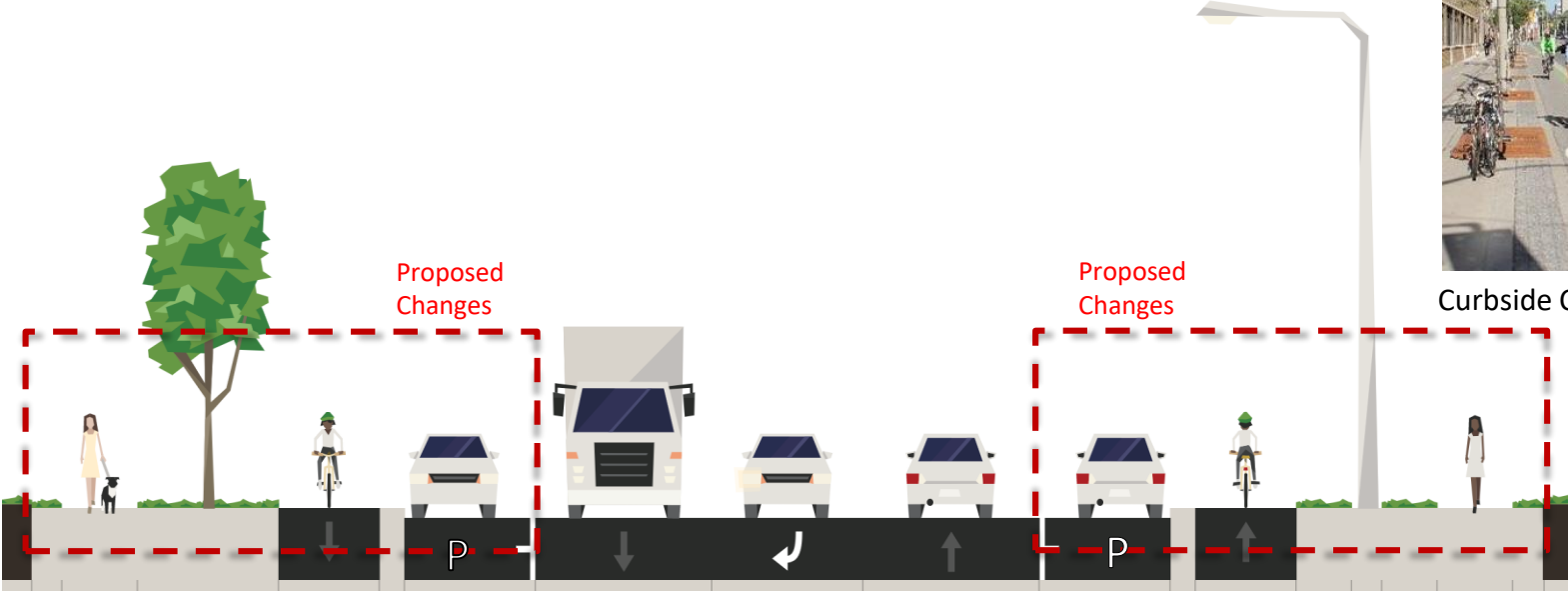
Separated Bike Lane Example



GLEN ERIN DRIVE (BRITANNIA TO BATTLEFORD)

DRAFT

Community Meeting #2 – Preferred Concept



Curbside Cycle Track Example

GLEN ERIN DRIVE (BATTLEFORD TO DERRY)

DRAFT

What We Heard at Community Meeting #2



Support for improved **Active Transportation** facilities along Glen Erin Drive



Request for further consideration of **roundabouts** along Glen Erin Drive



Request for additional **pedestrian crossing** facilities



Concern with traffic operations and **congestion**, particularly at transit stop locations



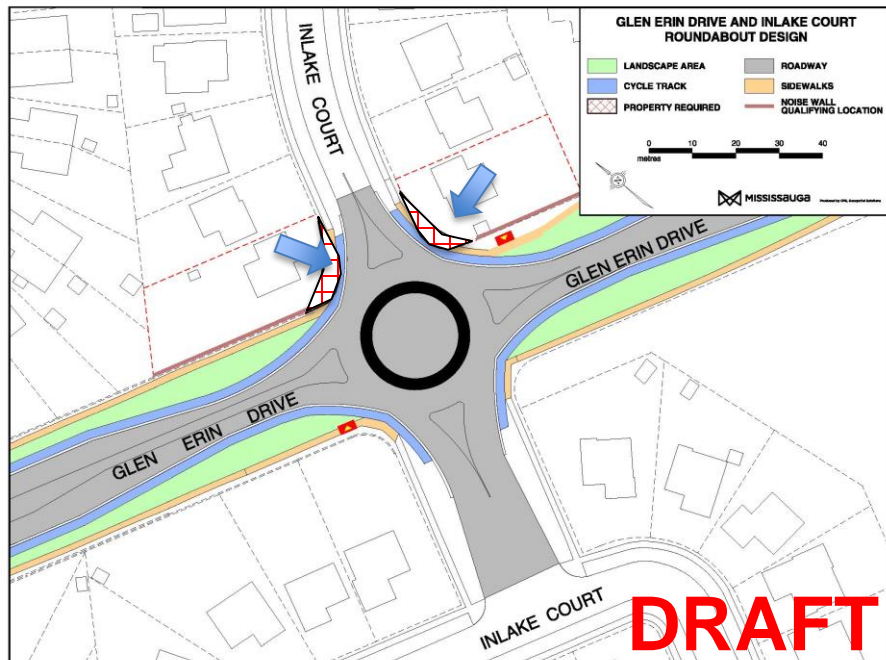
Concerns about **noise walls**, particularly aesthetic treatments

Roundabout Feasibility

- City has developed new **Roundabout Screening Tool**
- Long list of questions/considerations including:
 - Are there **schools** or significant pedestrian generators nearby?;
 - Is there persistent **traffic delays** or unusual intersection layouts?;
 - Any recorded **fatalities** or high incident of **collisions** resulting in injury?;
 - Would the City need to take **property**?
- Standardized assessment process to confirm if a roundabout is potentially feasible.



Roundabout Feasibility – Screening Assessment



GLEN ERIN/INLAKE INTERSECTION



Nearby schools (St. Elizabeth's)



Nearby CVC Regulated Area



No persistent traffic delays or unusual intersection layouts;

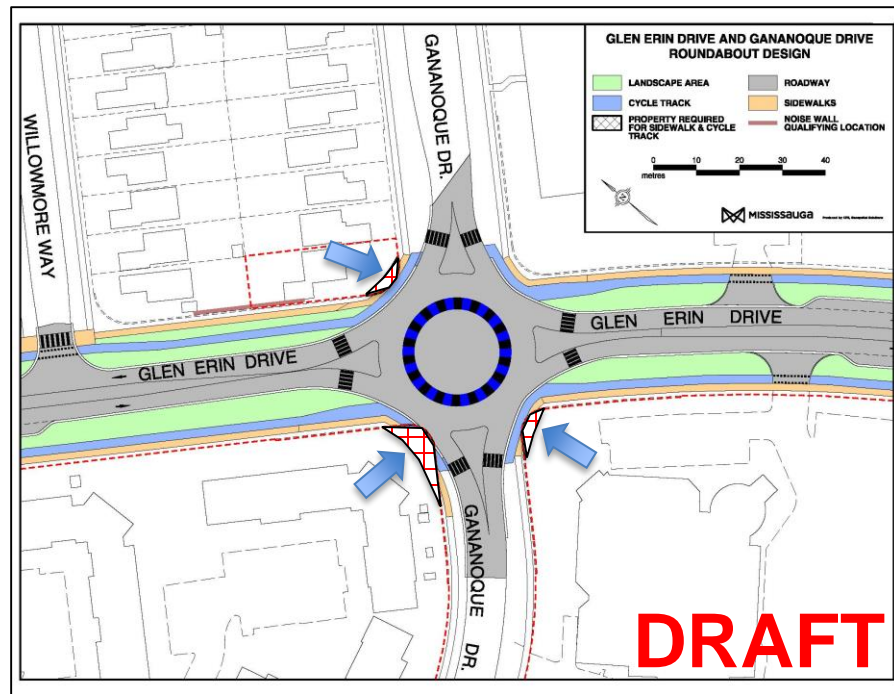


No recorded fatalities or high incident of collisions resulting in injury;



Property Required

Roundabout Feasibility – Screening Assessment



GLEN ERIN/GANANOQUE INTERSECTION



Nearby schools (Christian Academy) and Church (St John's)



No persistent traffic delays or unusual intersection layouts;

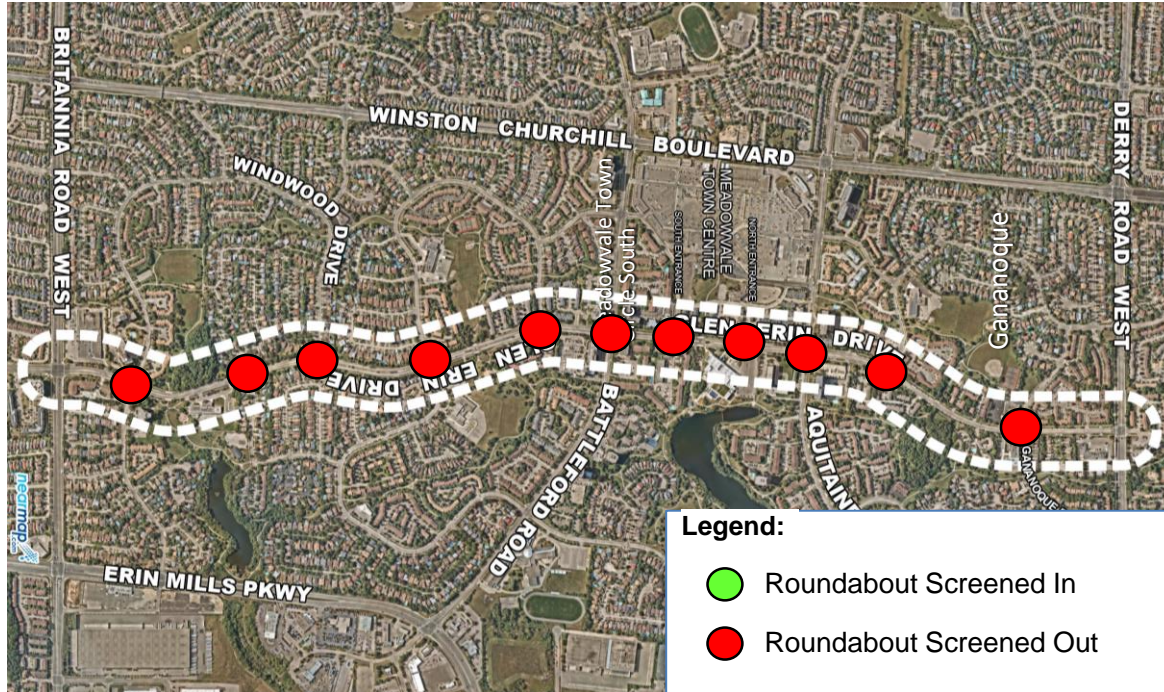


No recorded fatalities or high incident of collisions resulting in injury;



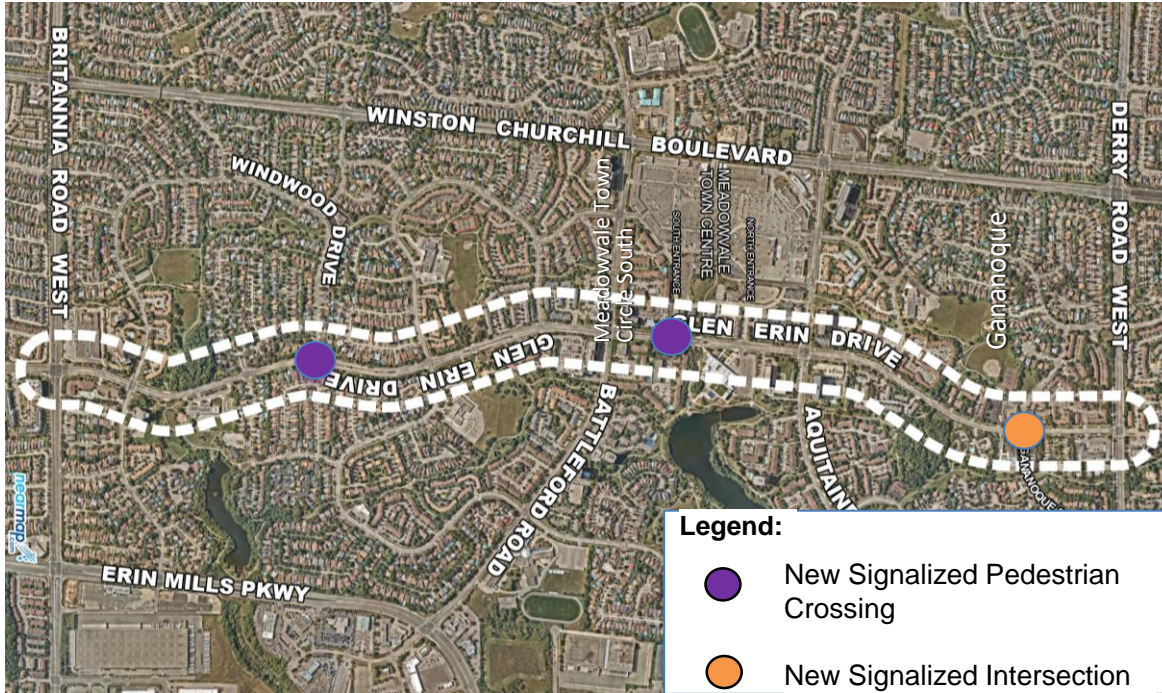
Property Required

Roundabout Feasibility – Screening Assessment



- **Property** impacts at all intersections
- No excessive **traffic delays** anticipated
- No **fatal** collisions recorded in the last 5 years

Pedestrian Crossings

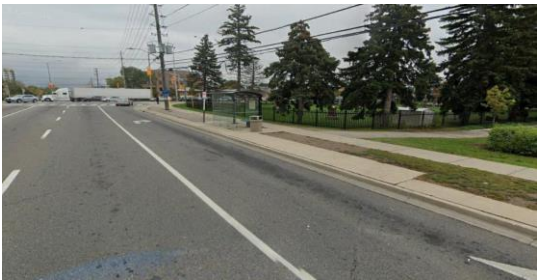
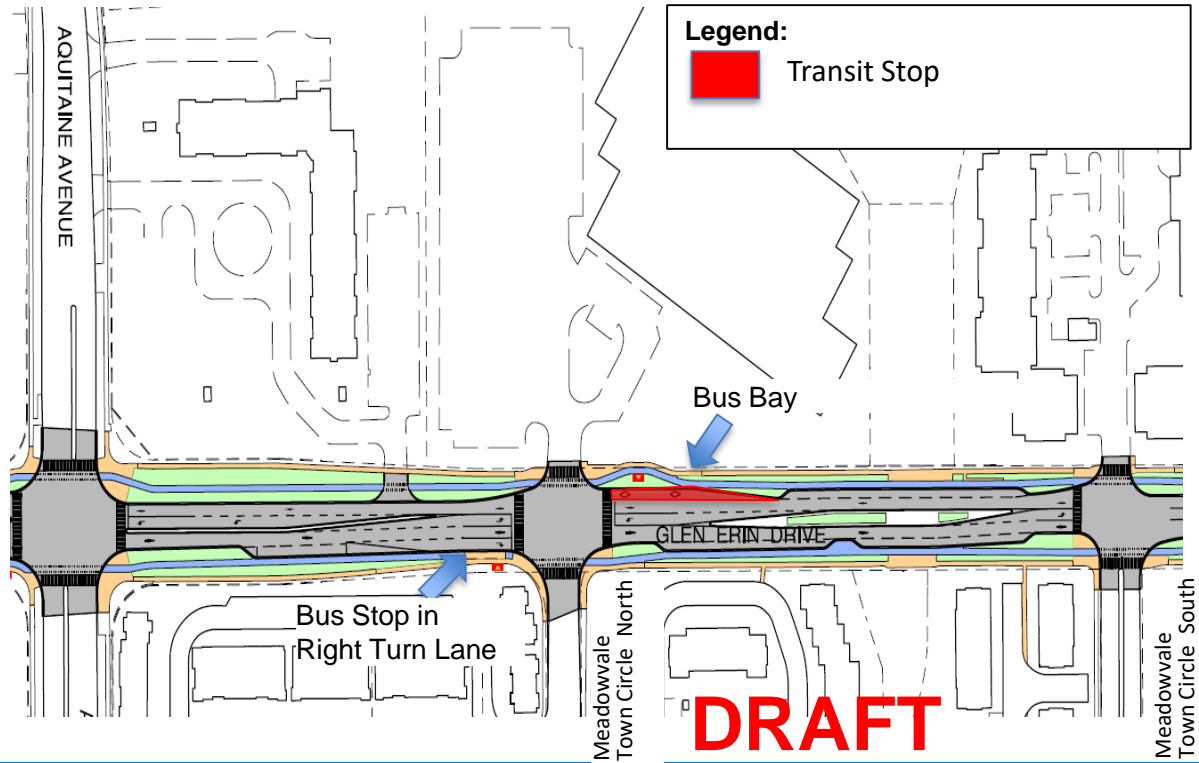


Signalized Pedestrian Crossing – Windwood and Meadowvale Town Circle South



Full Signalized Intersection – Gananoque

Transit Stops



Bus Stop in Right Turn Lane



Dedicated Bus Bay

Noise Assessment

- A Noise Assessment has been completed for the Glen Erin Drive corridor
- Assessed both existing and future (2031 and 2041) noise levels
- Noise Assessment has determined that noise mitigation is warranted at some qualifying locations in accordance with City's Noise Policy



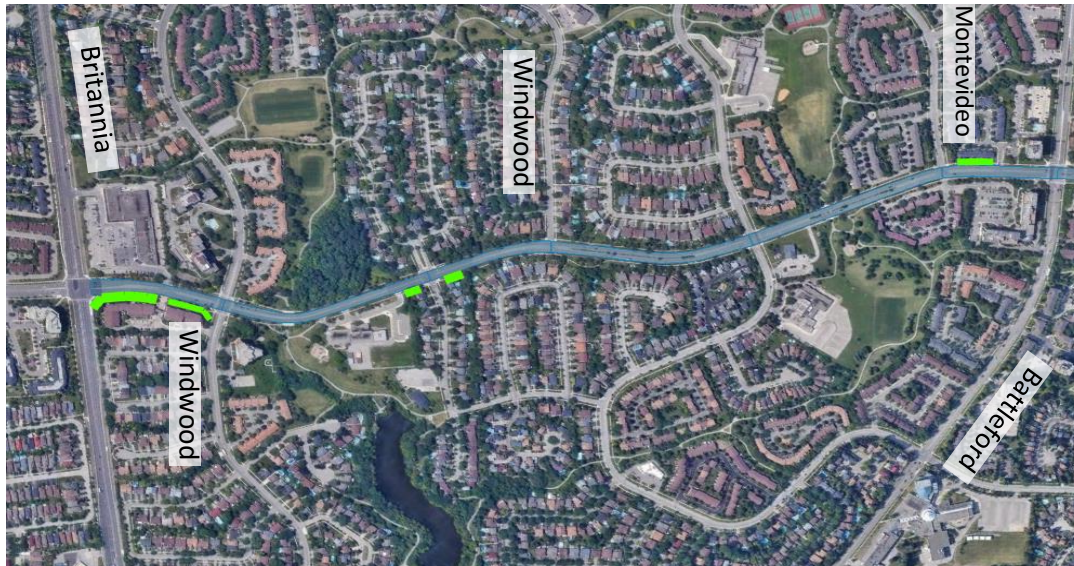
Wood Panel Type



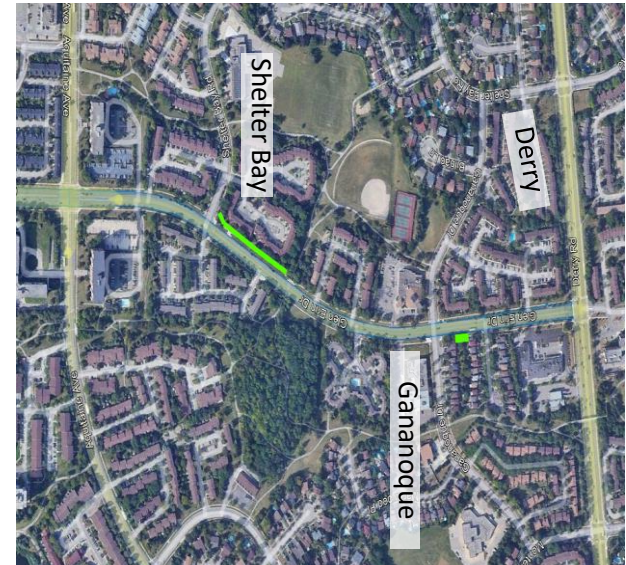
Concrete Panel Type


Noise Mitigation – Qualifying Locations

South Section

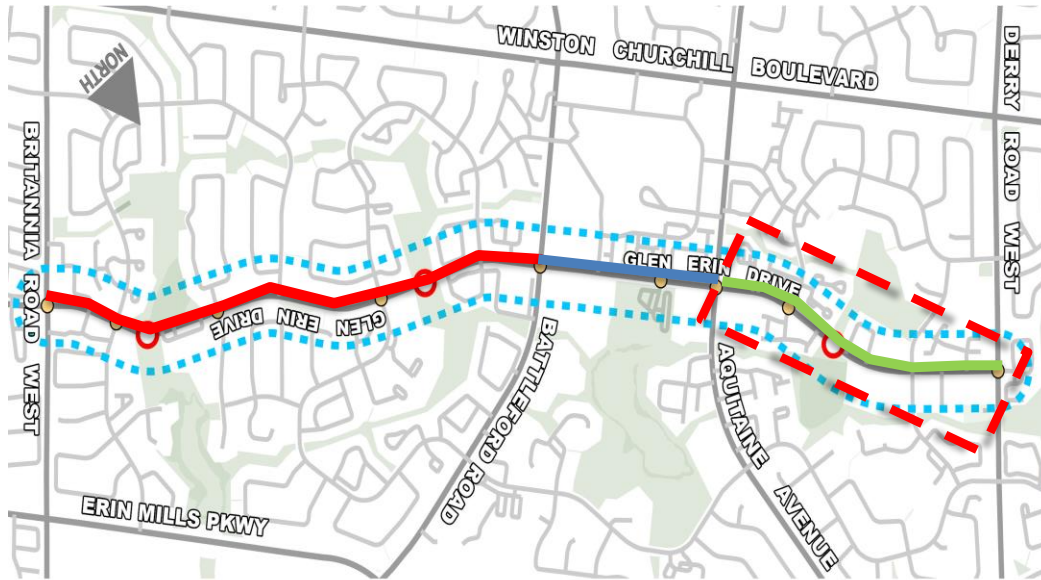


North Section



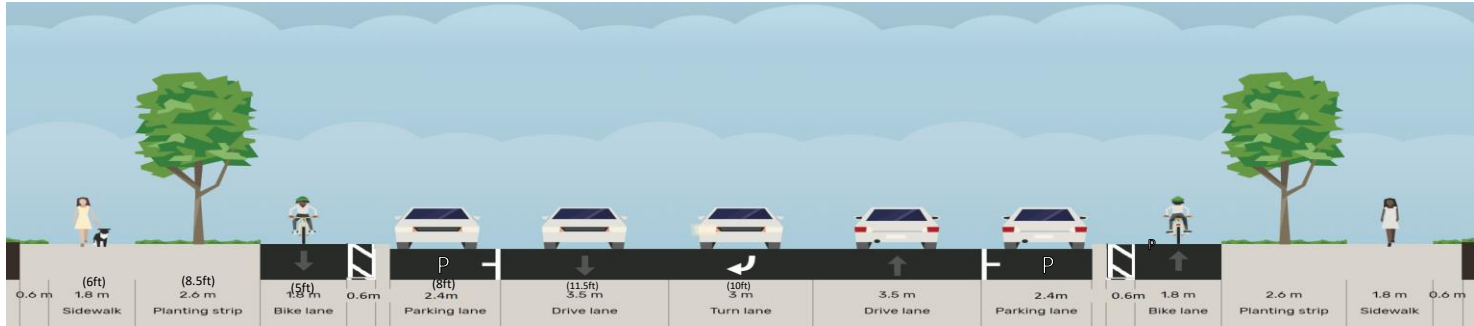
 Locations which Qualify for Noise Mitigation, subject to acceptance by the private property owners

Cycletrack Location – North of Aquitaine

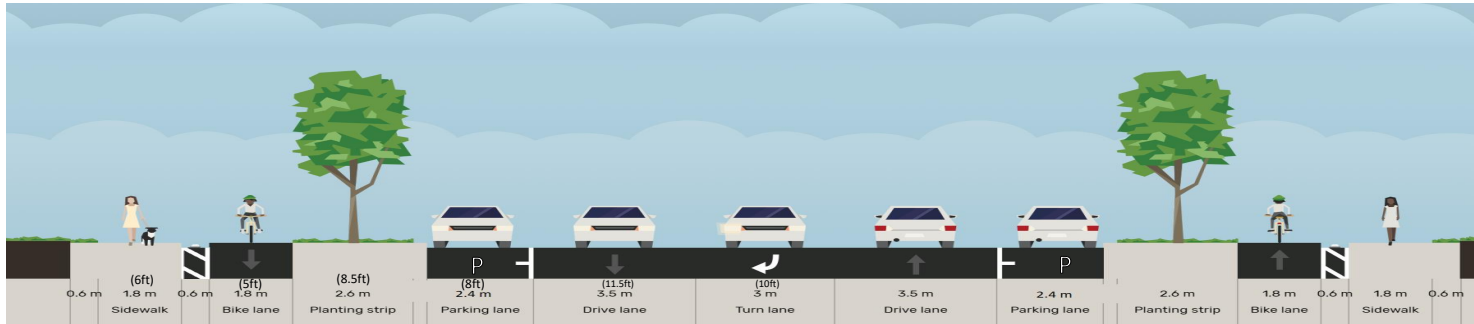


- Protected Bike Lane
(on road)
- Cycle Track –in
boulevard
(Adjacent to curb)
- Cycle Track – in
boulevard
(Adjacent to sidewalk)

Cycletrack Location – North of Aquitaine



Alt 1 – One-Way Cycle Track, Adjacent to Curb



Alt 2 – One-Way Cycle Track, Adjacent to Sidewalk

Cycletrack Location – Implemented Examples



Detectable Curb Separation,
Toronto



Continuous Detectable Tactile
Buffer Strip, Vaughan



Furnishing Zone Separation,
Waterloo

Cycle Track Location Evaluation Summary



Cycling
Facilities



Pedestrians



Trees in
Boulevard



Maintenance
Impacts

Alt. 1 – One-Way Cycle Track, Adjacent to Curb



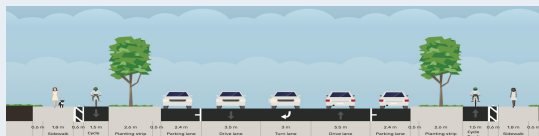
Acceptable

Most
Preferred

Not
Preferred

Acceptable

Alt. 2 – One-Way Cycle Track, Adjacent to Sidewalk



Most
Preferred

Acceptable

Most
Preferred

Most
Preferred

Legend

Most Preferred

Acceptable

Not Preferred

Cycletrack Location - Preferred Alternative



One-Way Cycle Track, Adjacent to Sidewalk (North of Aquitaine)

Project Timeline and Next Steps



Next Steps

-  Finalize Preliminary Design/Study
-  Commence Detail Design and Investigations
-  Construction

Additional Information



Project Website:
mississauga.ca/glenerindrive



Rory O'Sullivan, P.Eng.
Project Manager, City of Mississauga
Rory.Osullivan@mississauga.ca



PIC meeting material will
be available on website
following the meeting



Call 311



Please submit comments
by **June 3, 2022**

Thank you for attending!