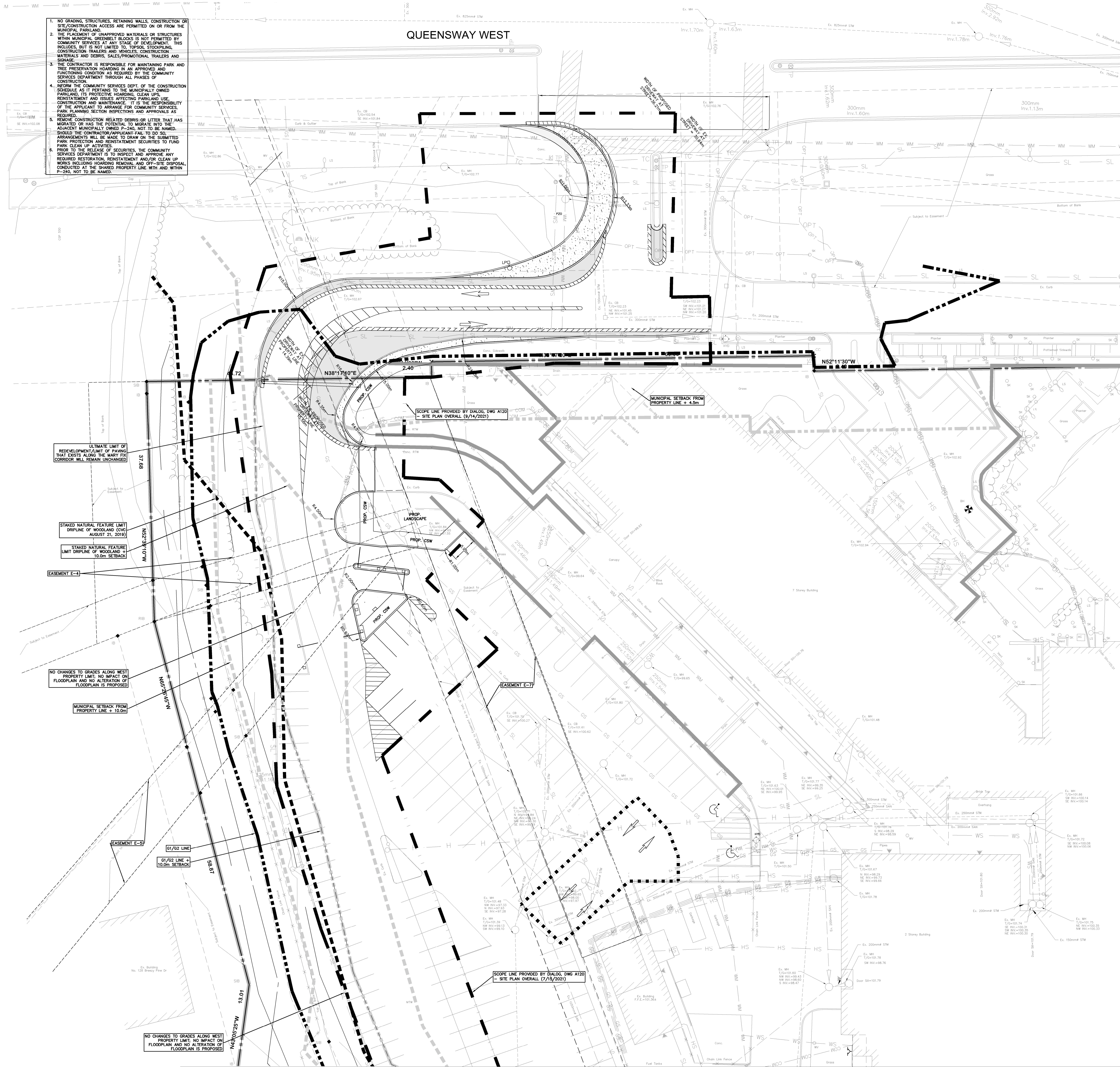


- NO GRADING, STRUCTURES, RETAINING WALLS, CONSTRUCTION OR SITE/CONSTRUCTION ACCESS ARE PERMITTED ON OR FROM THE MUNICIPAL PARKLAND.
- THE PLACEMENT OF UNAPPROVED MATERIALS OR STRUCTURES WITHIN MUNICIPAL GREENBELT BLOCKS IS NOT PERMITTED BY COMMUNITY SERVICES AT ANY STAGE OF DEVELOPMENT. THIS INCLUDES, BUT IS NOT LIMITED TO, TOPSOIL, STOCKPILING, CONSTRUCTION TRAILERS AND VEHICLES, CONSTRUCTION MATERIALS AND DEBRIS, SALES/PROMOTIONAL TRAILERS AND SIGNAGE.
- THE CONTRACTOR IS RESPONSIBLE FOR MAINTAINING PARK AND TREE PRESERVATION HOARDING IN AN APPROVED AND FUNCTIONING CONDITION AS REQUIRED BY THE COMMUNITY SERVICES DEPARTMENT THROUGH ALL PHASES OF CONSTRUCTION.
- INFORM THE COMMUNITY SERVICES DEPT. OF THE CONSTRUCTION SCHEDULE AS IT PERTAINS TO THE MUNICIPALLY OWNED PARKLAND, ITS PROTECTIVE HOARDING, CLEAN UPS, RESTORATION AND ISSUES AFFECTING PARKLAND CONSTRUCTION AND MAINTENANCE. IT IS THE RESPONSIBILITY OF THE APPLICANT TO ARRANGE FOR COMMUNITY SERVICES PARK PLANNING SECTION INSPECTIONS AND APPROVALS AS REQUIRED.
- REMOVE CONSTRUCTION RELATED DEBRIS OR LITTER THAT HAS MIGRATED OR HAS THE POTENTIAL TO MIGRATE INTO THE ADJACENT MUNICIPALLY OWNED P-240, NOT TO BE NAMED. SHOULD THE CONTRACTOR/APPLICANT FAIL TO DO SO, ARRANGEMENTS WILL BE MADE TO GRAB ON THE SUBMITTED PARK PROTECTION AND RESTORATION SECURITIES TO FIND PARK CLEAN UP ACTIVITIES.
- PRIOR TO THE RELEASE OF SECURITIES, THE COMMUNITY SERVICES DEPARTMENT IS TO INSPECT AND APPROVE ANY REQUIRED RESTORATION, RESTORATION AND/OR CLEAN UP WORKS INCLUDING HOARDING REMOVAL AND OFF-SITE DISPOSAL, CONDUCTED AT THE SHARED PROPERTY LINE WITH AND WITHIN P-240, NOT TO BE NAMED.

QUEENSWAY WEST



LEGEND OF EXISTING FEATURES

- SITE BOUNDARY
- EASEMENT
- EXISTING SANITARY SEWER
- EXISTING WATERMAIN
- EXISTING STORM SEWER
- EXISTING CURB
- EXISTING BUILDING
- EXISTING FENCE
- EXISTING HYDRO
- EXISTING HYDRO SERVICE
- EXISTING STREET LIGHT
- EXISTING WATER SERVICE
- EXISTING FIBRE OPTIC CABLE
- EXISTING TELEVISION CABLE
- EXISTING OXYGEN LINE
- EXISTING COMMUNICATION
- EXISTING MAN DOOR

LEGEND OF PROPOSED FEATURES

- PROPOSED BUILDING
- OVERHEAD DOOR
- MAN DOOR
- CONCRETE CURB
- RETAINING WALL
- SANITARY SEWER
- STORM SEWER
- PERFORATED 'BIG 'O' SUBDRAIN (SEE DETAIL)
- WATERMAIN
- WATER METER
- LIGHT POLE (REFER TO ELECTRICAL PLANS BY OTHERS)
- SEWER CROSSING (REFER TO CROSSING CHART)
- SHALLOW PIPE INSULATION (SEE DETAIL)
- LINE OF SHORING (BY OTHERS)
- SCOPE LINE
- STAKED NATURAL FEATURE LIMIT DRIFLINE OF WOODLAND (CVC AUGUST 21, 2019)
- STAKED NATURAL FEATURE LIMIT DRIFLINE OF WOODLAND +10.0m
- SAW CUT (SEE DETAIL ON C2-9)
- PROPOSED HEAVY DUTY ASPHALT (REFER TO C2-5)
- MARY FIK CREEK FLOOD PLAIN (REGIONAL STM) REFER TO STANTEC DWGS
- G1/G2 LINE
- G1/G2 LINE + 10.0m
- MEANDER BELT



ISSUED FOR:
 2021-05-20 ISSUED FOR PROGRESS SET
 2021-08-17 ISSUED FOR SPA
 2021-08-18 MCHS 2
 2021-08-23 BID BPH1
 2021-08-19 BID BY ADDENDUM 03
 2021-10-29 MCHS STAGE 4.1
 2021-11-08 ISSUED FOR CHANGE NOTICE 01
 2021-12-01 ISSUED FOR CVC
 2022-02-24 SP 21-156 WY REVISION 1

BENCHMARK
 ELEVATIONS ARE IN METERS AND ARE RELATED TO VERTICAL DATUM
 COVID-1928 PRE-1978 AND WERE DERIVED FROM CITY OF MISSISSAUGA
 BENCH MARK NO. 700
 ELEVATION = 110.995

METRIC
 THIS DRAWING IS COPYRIGHTED AND MUST NOT BE USED,
 REPRODUCED, OR REVISED WITHOUT WRITTEN PERMISSION.
 ALL DIMENSIONS ARE IN MILLIMETERS UNLESS OTHERWISE NOTED.
 VERIFY DIMENSIONS BEFORE COMMENCING WITH THE WORK.
 REPORT INCONSISTENCIES AND OMISSIONS TO THE CONSULTANT
 FOR CLARIFICATION BEFORE COMMENCING WITH THE WORK.
 DEVIATIONS FROM THE CONTRACT DOCUMENTS WITHOUT WRITTEN
 APPROVAL FROM THE CONSULTANT ARE SUBJECT TO CORRECTION
 AT THE CONTRACTOR'S EXPENSE.

CLIENT
 TRILLIUM HEALTH PARTNERS
 150 SHERWAY DR. ETOBICOKE
 TORONTO, ON M9C 1A5
 TEL: (416) 294-6671 WEBSITE: trilliumhealthpartners.ca

CONSTRUCTION MANAGER
 KENADAN CONTRACTING LTD.
 7080 DERRICKCREST DRIVE
 MISSISSAUGA, ON L4W 6G5
 TEL: (905) 670-2890 WEBSITE: www.kenadan.com

ARCHITECT & PRIME CONSULTANT
 DIALOG
 35 JOHN STREET, SUITE 500
 TORONTO, ON M5V 3G8
 TEL: (416) 966-2220 WEBSITE: dialogdesign.ca

STRUCTURAL ENGINEER
 DIALOG

MECHANICAL ENGINEER
 DIALOG

ELECTRICAL ENGINEER
 DIALOG

LANDSCAPE ARCHITECT
 DIALOG

CIVIL ENGINEER
 MTC CONSULTANTS INC.
 1018 SUTTON DRIVE, UNIT A
 BURLINGTON, ON L7R 6B8
 TEL: (905) 639-2532 WEBSITE: mtcs.com

SECURITY
 THE ATMAN GROUP INC.
 235-165 WOODMOUNT DRIVE
 OTTAWA, ON K2C 3P7
 TEL: (613) 817-9999 WEBSITE: theatmangroup.com

SIGNAGE AND WAYFINDING
 ENTRIO
 33 HARBOUR SQUARE, SUITE 202
 TORONTO, ON M5J 2G2
 TEL: (416) 593-6588 WEBSITE: entrio.com

VIBRATION, NOISE, ACOUSTICS
 SWALLOW ACOUSTICS CONSULTANTS LTD.
 23-368 REVIS RIVERDALE
 MISSISSAUGA, ON L5G 4S6
 TEL: (905) 271-7888 WEBSITE: throntonstonestill.com

BUILDING CODE
 LE ENGINEERING INC.
 170 UNIVERSITY AVE. 3RD FLOOR, BOX 1
 TORONTO, ON M5G 1S1
 TEL: (416) 515-9331 WEBSITE: lefro.com

VERTICAL TRANSPORTATION
 SOBERMAN ENGINEERING INC.
 55 ST. CLAIR AVENUE WEST, SUITE 205
 TORONTO, ON M4V 2T7
 TEL: (416) 323-2133 WEBSITE: sobermanengineering.com

HARDWARE
 SPYDC INC.
 35 HILDARA RD.
 MISSISSAUGA, ON L4H 3M5
 TEL: (905) 271-6489 WEBSITE: spydc.com

KEY PLAN

SEAL

PROJECT NORTH

THP M-SITE HOSPITAL PARKING STRUCTURE

MISSISSAUGA HOSPITAL
 100 QUEENSWAY WEST
 MISSISSAUGA, ONTARIO
 L5B 1B8

SITE SERVICING - PLAN 1

DRAWN: LGX CHECKED: GFB
 PLOT DATE: 06/2021 9:46:43 AM

C205

SCALE: 1:200

SEE CONTINUATION ON C206

SITE SERVICING - PLAN 1
 SCALE: 1:200