

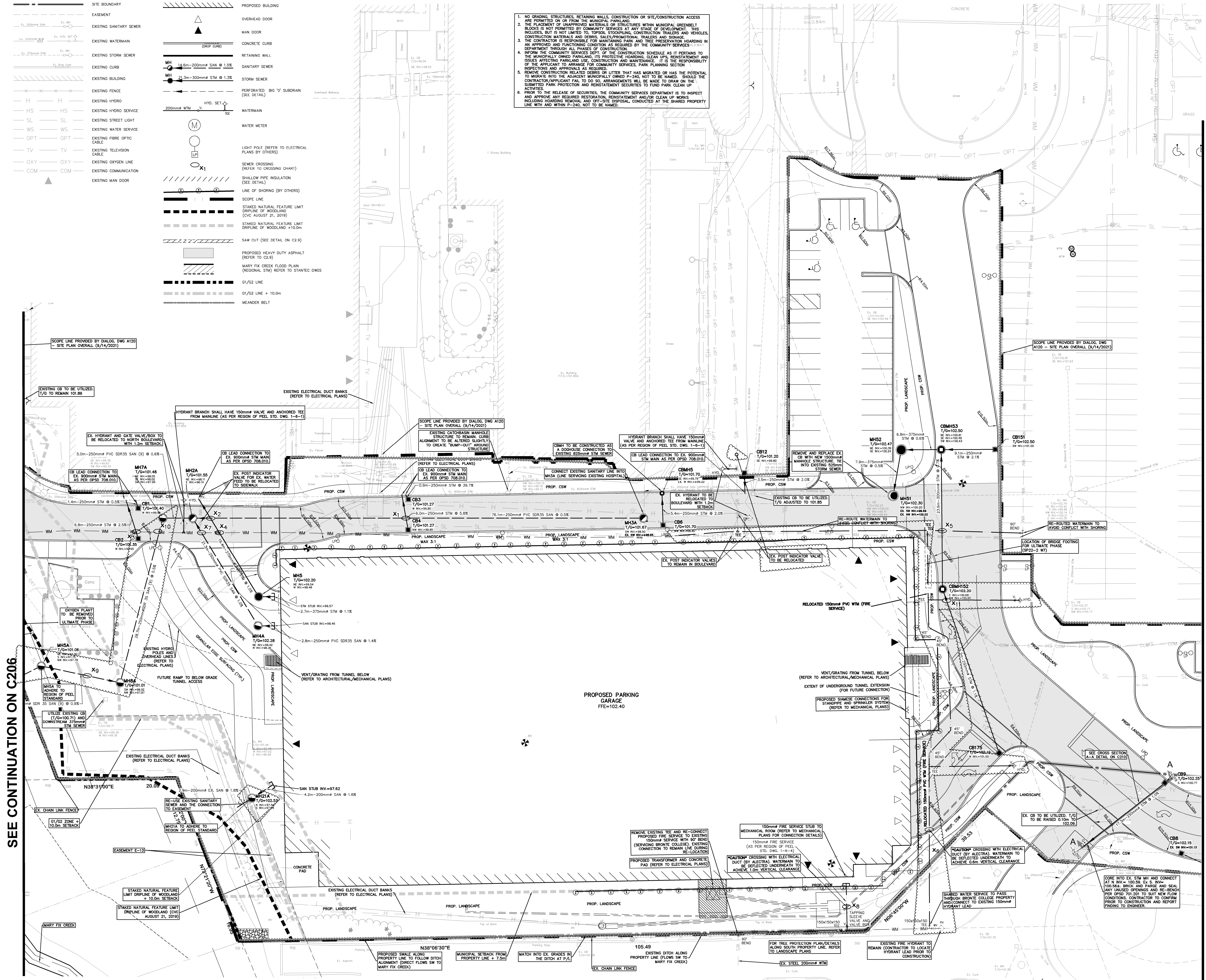
LEGEND OF EXISTING FEATURES

[Symbol]	SITE BOUNDARY
[Symbol]	EASEMENT
[Symbol]	EXISTING SANITARY SEWER
[Symbol]	EXISTING WATERMAIN
[Symbol]	EXISTING STORM SEWER
[Symbol]	EXISTING CURB
[Symbol]	EXISTING BUILDING
[Symbol]	EXISTING FENCE
[Symbol]	EXISTING HYDRO
[Symbol]	EXISTING HYDRO SERVICE
[Symbol]	EXISTING STREET LIGHT
[Symbol]	EXISTING WATER SERVICE
[Symbol]	EXISTING FIBRE OPTIC CABLE
[Symbol]	EXISTING TELEVISION CABLE
[Symbol]	EXISTING OXYGEN LINE
[Symbol]	EXISTING COMMUNICATION
[Symbol]	EXISTING MAN DOOR

LEGEND OF PROPOSED FEATURES

[Symbol]	PROPOSED BUILDING
[Symbol]	OVERHEAD DOOR
[Symbol]	MAN DOOR
[Symbol]	CONCRETE CURB
[Symbol]	RETAINING WALL
[Symbol]	SANITARY SEWER
[Symbol]	STORM SEWER
[Symbol]	PERFORATED BIG 10" SUBDRAIN (SEE DETAIL)
[Symbol]	WATERMAIN
[Symbol]	WATER METER
[Symbol]	LIGHT POLE (REFER TO ELECTRICAL PLANS BY OTHERS)
[Symbol]	SEWER CROSSING (CHECK TO CROSSING (DIARY))
[Symbol]	SHALLOW PIPE INSULATION (SEE DETAIL)
[Symbol]	LINE OF SHORING (BY OTHERS)
[Symbol]	SCOPE LINE
[Symbol]	STAKED NATURAL FEATURE LIMIT (DRIPLINE OF WOODLAND) (CIVIL AUGUST 21, 2019)
[Symbol]	STAKED NATURAL FEATURE LIMIT (DRIPLINE OF WOODLAND +10.0m)
[Symbol]	SAW CUT (SEE DETAIL ON C2.9)
[Symbol]	PROPOSED HEAVY DUTY ASPHALT (REFER TO ELECTRICAL PLANS)
[Symbol]	MARY FIX CREEK FLOOD PLAN (REGIONAL STM) REFER TO STANTEC DWG
[Symbol]	G1/G2 LINE
[Symbol]	G1/G2 LINE + 10.0m
[Symbol]	MEANDER BELT

1. NO GRADING, STRUCTURES, RETAINING WALLS, CONSTRUCTION OR SITE/CONSTRUCTION ACCESS ARE PERMITTED ON OR FROM THE MUNICIPAL PARKLAND.
 2. THE PLACEMENT OF UNIMPROVED MATERIALS OR STRUCTURES WITHIN MUNICIPAL GREENBELT BLOCKS IS NOT PERMITTED BY COMMUNITY SERVICES AT ANY STAGE OF DEVELOPMENT. THIS INCLUDES, BUT IS NOT LIMITED TO, TOPSOIL, STOCKPILING, CONSTRUCTION TRAILERS AND VEHICLES, CONSTRUCTION MATERIALS AND DEBRIS, PROMOTIONAL TRAILERS AND SIGNAGE.
 3. THE CONTRACTOR IS RESPONSIBLE FOR MAINTAINING PARK AND TREE PRESERVATION HOARDING IN AN APPROVED AND FUNCTIONING CONDITION AS REQUIRED BY THE COMMUNITY SERVICES DEPARTMENT THROUGH ALL PHASES OF CONSTRUCTION.
 4. INFORM THE COMMUNITY SERVICES DEPT. OF THE CONSTRUCTION SCHEDULE AS IT PERTAINS TO THE MUNICIPALLY OWNED PARKLAND, ITS PROTECTIVE HOARDING, CLEAN UP, RESTATMENT AND ISSUES AFFECTING PARKLAND USE, CONSTRUCTION AND MAINTENANCE. IT IS THE RESPONSIBILITY OF THE APPLICANT TO ARRANGE FOR COMMUNITY SERVICES PARK PLANNING SECTION INSPECTIONS AND APPROVALS AS REQUIRED.
 5. REMOVE CONSTRUCTION RELATED DEBRIS OR LITTER THAT HAS MIGRATED OR HAS THE POTENTIAL TO MIGRATE INTO THE ADJACENT MUNICIPALLY OWNED P-240, NOT TO BE NAMED. SHOULD THE CONTRACTOR/APPLICANT FAIL TO DO SO, ARRANGEMENTS WILL BE MADE TO DRAW ON THE SUBMITTED PARK PROTECTION AND RESTATMENT SECURITIES TO FUND PARK CLEAN UP ACTIVITIES.
 6. PRIOR TO THE RELEASE OF SECURITIES, THE COMMUNITY SERVICES DEPARTMENT IS TO INSPECT AND APPROVE ANY REQUIRED RESTORATION, RESTATMENT AND/OR CLEAN UP WORKS INCLUDING HOARDING REMOVAL AND OFF-SITE DISPOSAL, CONDUCTED AT THE SHARED PROPERTY LINE WITH AND WITHIN P-240, NOT TO BE NAMED.



SEE CONTINUATION ON C206

SEE CONTINUATION ON C208



ISSUED FOR:
 2021-05-20 ISSUED FOR PROGRESS SET
 2021-08-17 ISSUED FOR SPA
 2021-08-18 MCHS 2
 2021-08-23 BID #P1
 2021-08-19 BID #P1 ADDENDUM 03
 2021-10-29 MCHS STAGE 4.1
 2021-11-08 ISSUED FOR CHANGE NOTICE 01
 2021-12-01 ISSUED FOR CIVC
 2022-02-24 SP 21-156 WY REVISION 1

BENCHMARK
 ELEVATIONS ARE IN METRES AND ARE RELATED TO VERTICAL DATUM
 CGVD-1988 PEG-1978 AND WERE DERIVED FROM CITY OF MISSISSAUGA
 BENCHMARK NO. 700
 ELEVATION = 110.985

METRIC
 THIS DRAWING IS COPYRIGHTED AND MUST NOT BE USED,
 REPRODUCED, OR REVISED WITHOUT WRITTEN PERMISSION.
 ALL DIMENSIONS ARE IN MILLIMETERS UNLESS OTHERWISE NOTED.
 VERIFY DIMENSIONS FOR CLARIFICATION BEFORE COMMENCING WITH THE WORK.
 DO NOT SCALE THIS DRAWING.
 REPORT INCONSISTENCIES AND OMISSIONS TO THE CONSULTANT
 APPROVAL FROM THE CONSULTANT ARE SUBJECT TO CORRECTION
 AT THE CONTRACTOR'S EXPENSE.

CLIENT
 TRILLIUM HEALTH PARTNERS
 150 SHERWAY DR. ETOBICOKE
 TORONTO, ON M9C 1A5
 TEL: (416) 298-6711 WEBSITE: trilliumhealthpartners.ca

CONSTRUCTION MANAGER
 KENNEDY CONTRACTING LTD.
 7080 DERRICK CREST DRIVE
 MISSISSAUGA, ON L4W 0G5
 TEL: (905) 670-2690 WEBSITE: www.kennedy.com

ARCHITECT & PRIME CONSULTANT
 DIALOG
 35 JOHN STREET, SUITE 500
 TORONTO, ON M5V 2E9
 TEL: (416) 968-2220 WEBSITE: dialogdesign.ca

STRUCTURAL ENGINEER
 DIALOG

MECHANICAL ENGINEER
 DIALOG

ELECTRICAL ENGINEER
 DIALOG

LANDSCAPE ARCHITECT
 DIALOG

CIVIL ENGINEER
 MTC CONSULTANTS INC.
 1018 SUTTON DRIVE, UNIT A
 BURLINGTON, ON L7R 6B8
 TEL: (905) 639-2552 WEBSITE: mtc85.com

SECURITY
 THE ATMAN GROUP INC.
 235-165 WOODBINE DRIVE
 OTTAWA, ON K2C 3P7
 TEL: (613) 837-0999 WEBSITE: theatmangroup.com

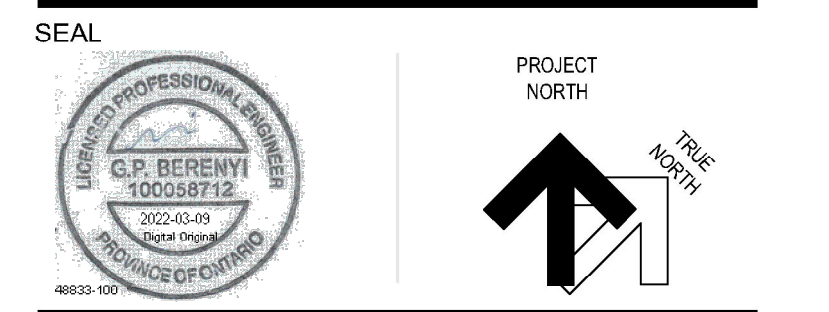
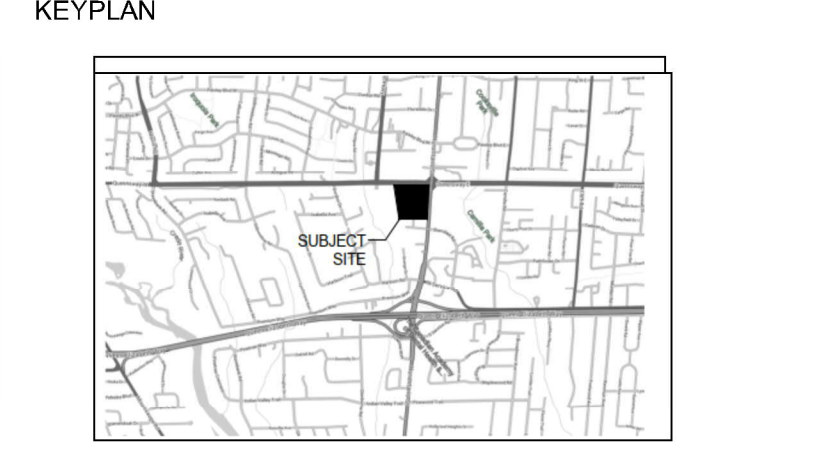
SIGNAGE AND WAYFINDING
 ENTRIO
 33 HARBOUR SQUARE, SUITE 202
 TORONTO, ON M5J 2G2
 TEL: (416) 363-6868 WEBSITE: entriogroup.com

VIBRATION, NOISE, ACOUSTICS
 SWALLOW ACOUSTICS CONSULTANTS LTD.
 23-368 REVIS AVENUE
 MISSISSAUGA, ON L5G 4S6
 TEL: (905) 271-7888 WEBSITE: thornthornesdill.com

BUILDING CODE
 LE ENGINEERING INC.
 170 UNIVERSITY AVE. 3RD FLOOR, BOX 1
 TORONTO, ON M5H 3B3
 TEL: (416) 515-9331 WEBSITE: lefr.com

VERTICAL TRANSPORTATION
 SOBERMAN ENGINEERING INC.
 55 ST. CLAIR AVENUE WEST, SUITE 205
 TORONTO, ON M4V 1P7
 TEL: (416) 323-1333 WEBSITE: sobermanengineering.com

HARDWARE
 SPYDER SC
 35 HILDA RD.
 WILLOWDALE, ON M2H 3N6
 TEL: (416) 271-6489 WEBSITE: spydersc.com



THP M-SITE HOSPITAL PARKING STRUCTURE

MISSISSAUGA HOSPITAL
 100 QUEENSWAY WEST
 MISSISSAUGA, ONTARIO
 L5B 1B8

SITE SERVICING - PLAN 3

DRAWN: LGX CHECKED: GFB
 PLOT DATE: 06/20/21 9:46:43 AM

C207