

ISSUED FOR

1	2021-08-06	BID BPO1
2	2021-08-06	BUILDING PERMIT
3	2021-08-06	SITE PLAN APPROVAL
4	2021-08-18	MCH 3.2
5	2021-10-28	BPO2 50% QA
6	2021-10-29	MCH Stage 4.1
7	2021-12-03	BPO2 100% QA
8	2021-12-06	BUILDING PERMIT RESUBMIT 1
9	2021-12-17	BID BPO2
10	2022-02-24	SP 21-156 W7 REVISION 1

METRIC
 THIS DRAWING IS COPYRIGHTED AND MUST NOT BE USED, REPRODUCED, OR REVISED WITHOUT WRITTEN PERMISSION. ALL DIMENSIONS ARE IN MILLIMETERS UNLESS OTHERWISE NOTED. VERIFY DIMENSIONS. DO NOT SCALE THIS DRAWING.

REPORT INCONSISTENCIES AND OMISSIONS TO THE CONSULTANT FOR CLARIFICATION BEFORE COMMENCING WITH THE WORK. DEVIATIONS FROM THE CONTRACT DOCUMENTS WITHOUT WRITTEN APPROVAL FROM THE CONSULTANT ARE SUBJECT TO CORRECTION AT THE CONTRACTOR'S EXPENSE.

CLIENT
 TRILLIUM HEALTH PARTNERS
 150 SHERWAY DR. ETOBICOKE
 TORONTO, ON M9C 1A5
 TEL: (416) 254-8911 WEBSITE: trilliumhealthpartners.ca

CONSTRUCTION MANAGER
 KENADAN CONTRACTING LTD.
 7181 BERRYPURCHASE DRIVE
 MISSISSAUGA, ON L5M 0G5
 TEL: (905) 910-2660 WEBSITE: www.kenadan.com/

ARCHITECT & PRIME CONSULTANT
 DIALOG
 32 JOHN STREET, SUITE 500
 TORONTO, ON M5V 2S8
 TEL: (416) 968-0220 WEBSITE: dialogesign.ca

STRUCTURAL ENGINEER
 DIALOG

MECHANICAL ENGINEER
 DIALOG

ELECTRICAL ENGINEER
 DIALOG

LANDSCAPE ARCHITECT
 DIALOG

CIVIL ENGINEER
 MTE CONSULTANTS INC.
 1018 SUTTON DRIVE, UNIT A
 BURLINGTON, ON L7R 1S8
 TEL: (905) 638-2332 WEBSITE: mte85.com

SECURITY
 THE ATARIAN GROUP INC.
 28-28 WOODWARD DRIVE
 OTTAWA, ON K1G 3P7
 TEL: (613) 817-0939 WEBSITE: theatariangroup.com

SIGNAGE AND WAYFINDING
 ENTRIO
 33 HARBOUR SQUARE, SUITE 202
 TORONTO, ON M5J 2G2
 TEL: (416) 363-6869 WEBSITE: entrio.com

VIBRATION, NOISE, ACOUSTICS
 THORNTON/MASETTI
 23366 REVELS AVENUE
 MISSISSAUGA, ON L5G 4S5
 TEL: (905) 271-7859 WEBSITE: thortonmasetti.com

BUILDING CODE
 LR ENGINEERING INC.
 170 UNIVERSITY AVE. 3RD FLOOR, BOX 1
 TORONTO, ON M5H 1B5
 TEL: (416) 515-9331 WEBSITE: lrinfo.com


VERTICAL TRANSPORTATION
 SOBEMAN ENGINEERING INC.
 55 ST. CLAIR AVENUE WEST, SUITE 205
 TORONTO, ON M5V 1Y7
 TEL: (416) 323-2133 WEBSITE: sobemanengineering.com

HARDWARE
 SPYDER
 35 HILDA RD
 WOODBRIDGE, ON L4H 3M5
 TEL: (947) 271-4499 WEBSITE: spyderinc.com

KEYPLAN



SEAL



THP M-SITE HOSPITAL PARKING STRUCTURE

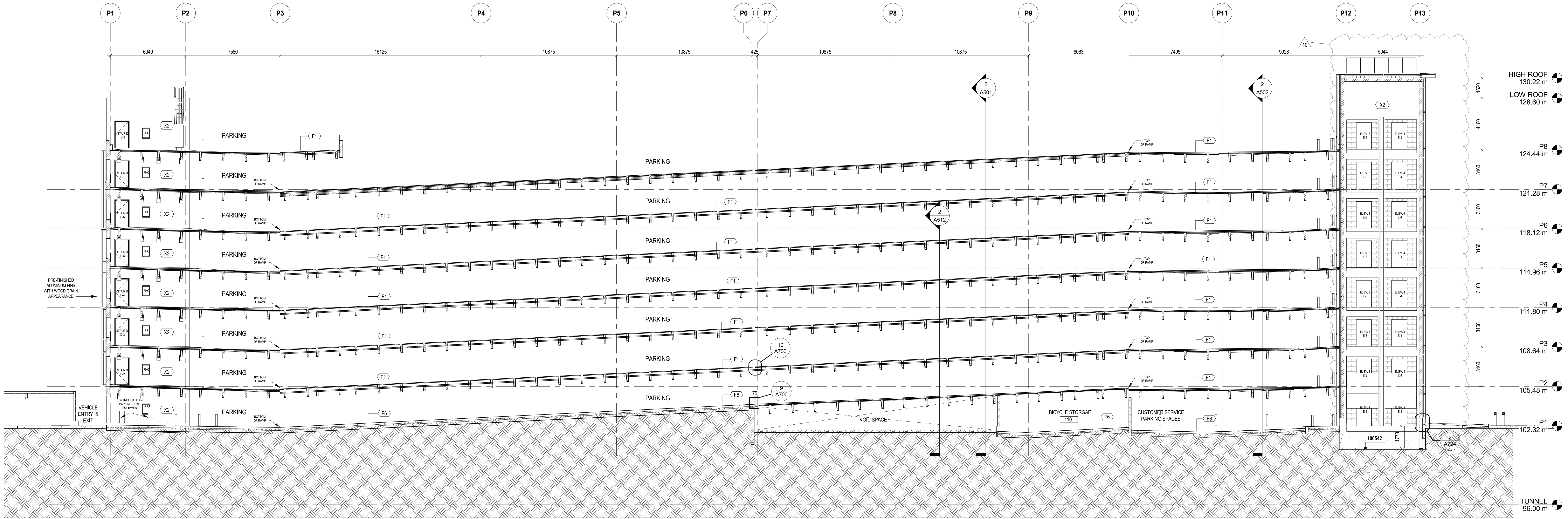
MISSISSAUGA HOSPITAL
 100 QUEENSWAY WEST
 MISSISSAUGA, ONTARIO
 L5B 1B8

BUILDING SECTIONS

DRAWN: Aalter CHECKED: Checker
 PLOT DATE: 3/10/2022 4:04:17 PM

A503

©RevitLocal File\DLG_2003572_AR_THP_M_PARKING_SBsec.rvt



BUILDING SECTION - WEST TO EAST AT RAMP ABOVE BIKE STORAGE
 SCALE: 1:125

1
 A503