

- ISSUED FOR
- 2021-08-06 BID BP01
  - 2021-08-06 BUILDING PERMIT
  - 2021-08-06 SITE PLAN APPROVAL
  - 2021-08-18 MOH 3.2
  - 2021-09-09 BID BP01 ADDENDUM NO. 2
  - 2021-10-26 BP02 50% GA
  - 2021-10-29 MOH Stage 4.1
  - 2021-12-03 BP02 100% GA
  - 2021-12-06 BUILDING PERMIT RESUBMIT 1
  - 2021-12-17 BID BP02
  - 2022-02-24 SP 21-156 W7 REVISION 1

**METRIC**  
 THIS DRAWING IS COPYRIGHTED AND MUST NOT BE USED, REPRODUCED, OR REVISED WITHOUT WRITTEN PERMISSION. ALL DIMENSIONS ARE IN MILLIMETERS UNLESS OTHERWISE NOTED. VERIFY DIMENSIONS. DO NOT SCALE THIS DRAWING.

REPORT INCONSISTENCIES AND OMISSIONS TO THE CONSULTANT FOR CLARIFICATION BEFORE COMMENCING WITH THE WORK. DEVIATIONS FROM THE CONTRACT DOCUMENTS WITHOUT WRITTEN APPROVAL FROM THE CONSULTANT ARE SUBJECT TO CORRECTION AT THE CONTRACTOR'S EXPENSE.

**CLIENT**  
 TRILLIUM HEALTH PARTNERS  
 150 SHERWAY DR. ETOBICOKE  
 TORONTO, ON M9C 1A5  
 TEL: (416) 254-8911 WEBSITE: trilliumhealthpartners.ca

**CONSTRUCTION MANAGER**  
 KENADAN CONTRACTING LTD.  
 7981 BERRYPURCHASE DRIVE  
 MISSISSAUGA, ON L5W 0K5  
 TEL: (905) 970-2660 WEBSITE: www.kenadan.com/

**ARCHITECT & PRIME CONSULTANT**  
 DIALOG  
 35 JOHN STREET, SUITE 500  
 TORONTO, ON M5V 1S8  
 TEL: (416) 968-0220 WEBSITE: dialogdesign.ca

**STRUCTURAL ENGINEER**  
 DIALOG

**MECHANICAL ENGINEER**  
 DIALOG

**ELECTRICAL ENGINEER**  
 DIALOG

**LANDSCAPE ARCHITECT**  
 DIALOG

**CIVIL ENGINEER**  
 MTE CONSULTANTS INC.  
 1018 SUTTON DRIVE, UNIT A  
 BURLINGTON, ON L7R 1S8  
 TEL: (905) 638-2332 WEBSITE: mte85.com

**SECURITY**  
 THE ATARIAN GROUP INC.  
 285-180 WOODWARD DRIVE  
 OTTAWA, ON K2K 2P7  
 TEL: (613) 817-0909 WEBSITE: theatariangroup.com

**SIGNAGE AND WAYFINDING**  
 ENTRIO  
 33 HARBOUR SQUARE, SUITE 202  
 TORONTO, ON M5J 2G2  
 TEL: (416) 368-6869 WEBSITE: entriocom.com

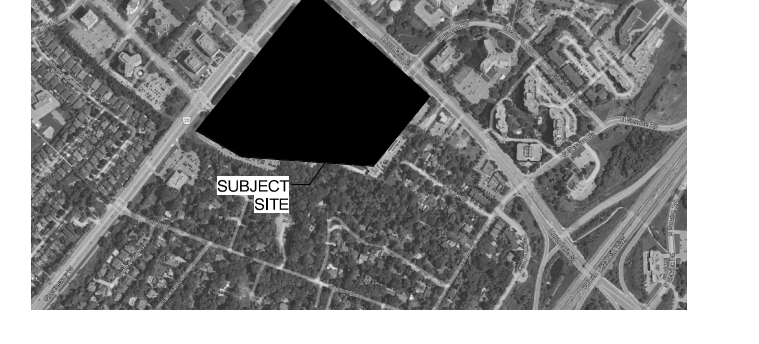
**VIBRATION, NOISE, ACOUSTICS**  
 THORNTON/OMASETTI  
 23366 REVELS AVENUE  
 MISSISSAUGA, ON L5G 4S5  
 TEL: (905) 271-8959 WEBSITE: thortontomasetti.com

**BUILDING CODE**  
 LRI ENGINEERING INC.  
 170 UNIVERSITY AVE. 3RD FLOOR, BOX 1  
 TORONTO, ON M5H 1B5  
 TEL: (416) 515-9331 WEBSITE: lrifirm.com

**VERTICAL TRANSPORTATION**  
 SOBEMAN ENGINEERING INC.  
 55 ST. CLAIR AVENUE WEST, SUITE 205  
 TORONTO, ON M5V 1Y7  
 TEL: (416) 323-2133 WEBSITE: sobemanengineering.com

**HARDWARE**  
 SPYDR  
 35 HILDA RD  
 WOODBRIDGE, ON L4H 3M5  
 TEL: (947) 271-4899 WEBSITE: spydrinc.com

**KEYPLAN**



**THP M-SITE HOSPITAL PARKING STRUCTURE**

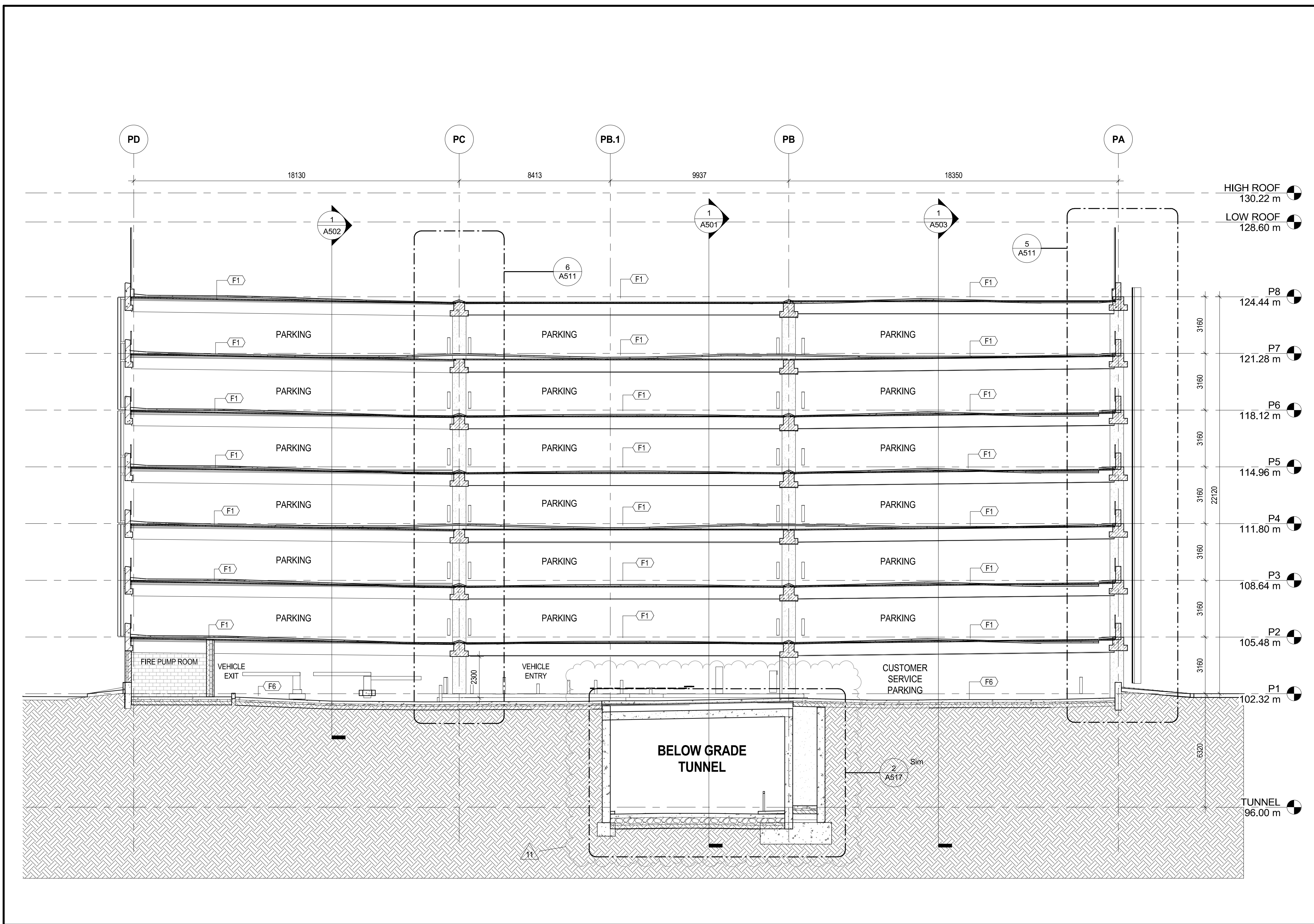
MISSISSAUGA HOSPITAL  
 100 QUEENSWAY WEST  
 MISSISSAUGA, ONTARIO  
 L5B 1B8

**BUILDING SECTIONS**

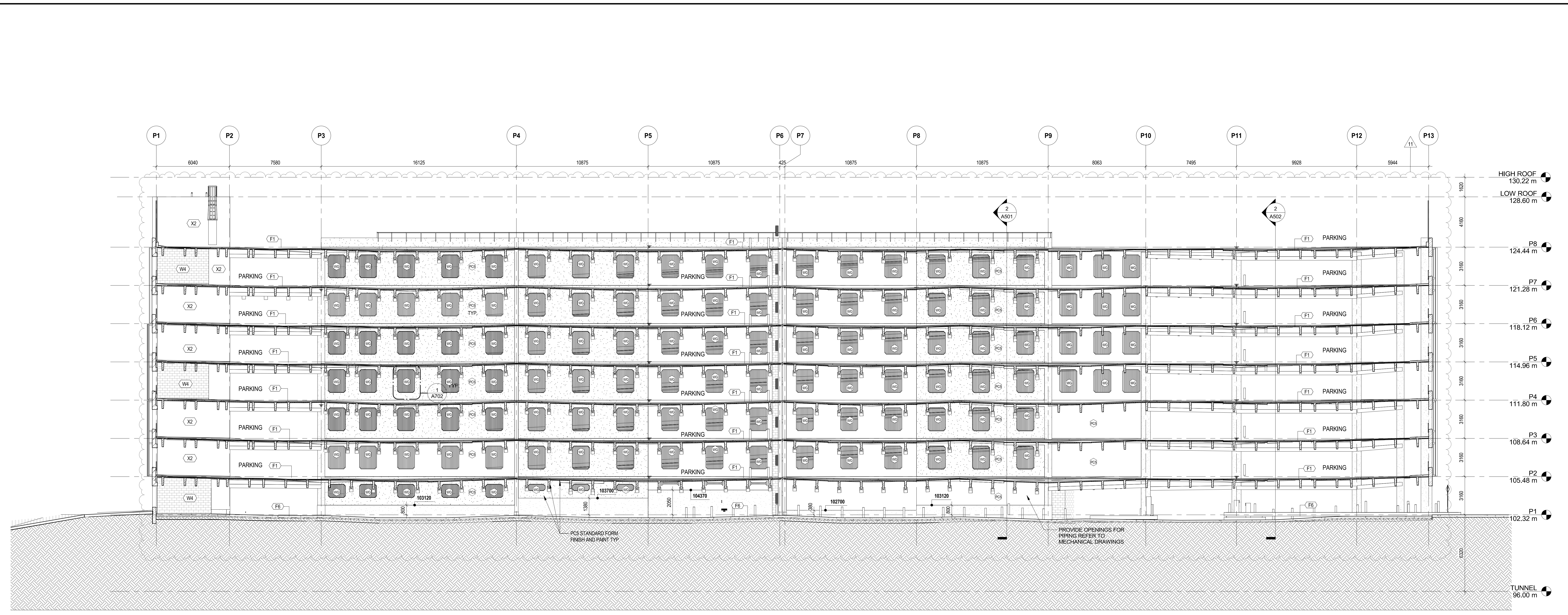
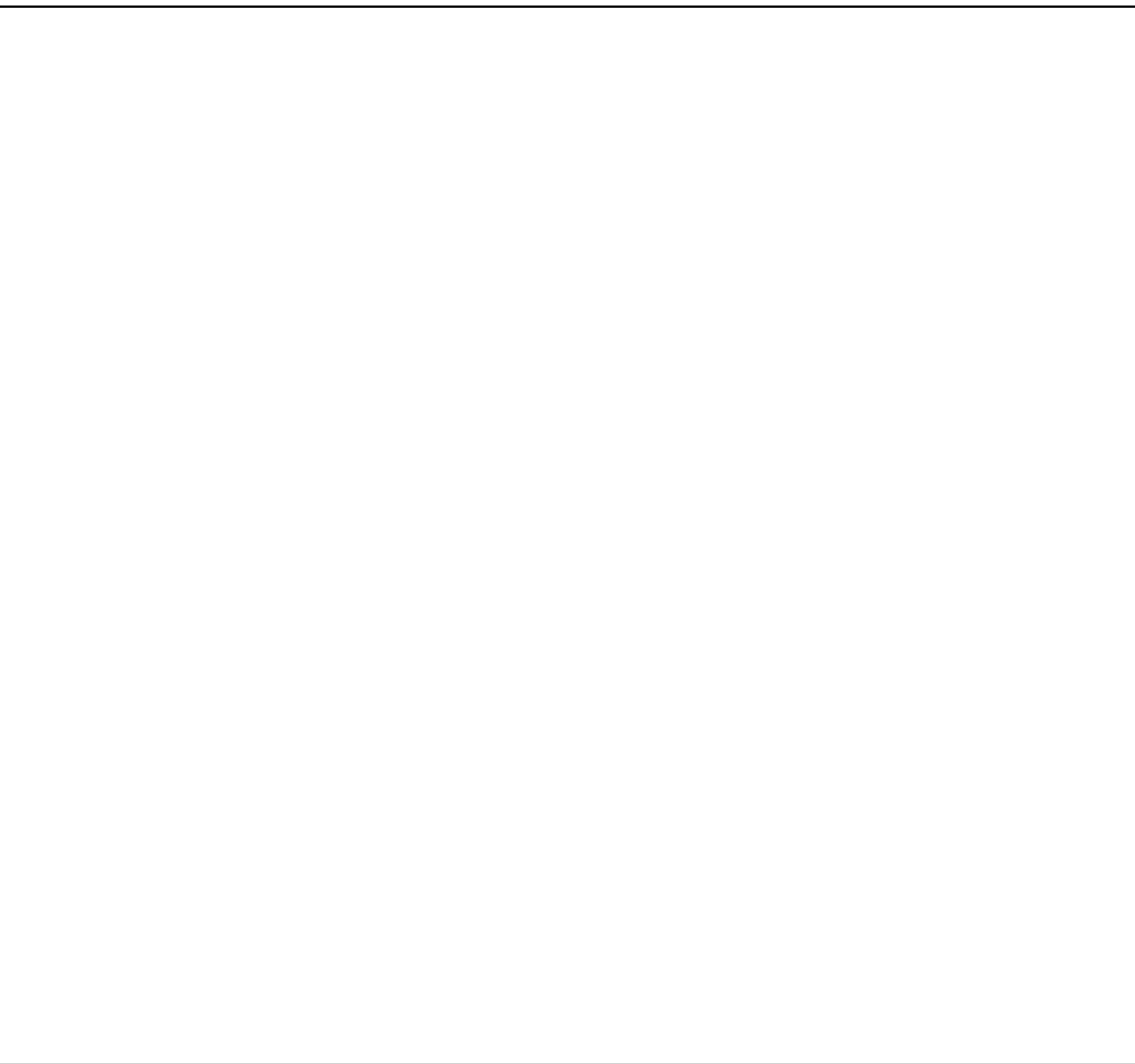
DRAWN: Alutor CHECKED: Checker  
 PLOT DATE: 31/10/2022 4:04:16 PM

**A502**

C:\Revit\Local Files\DLG\_2005572\_AR\_THP\_M\_PARKING\_SBsec.rvt



BUILDING SECTION - SOUTH TO NORTH AT FLAT DRIVE AISLE  
 SCALE: 1:125 A502



BUILDING SECTION - WEST TO EAST AT FLAT PARKING  
 SCALE: 1:125 A502

