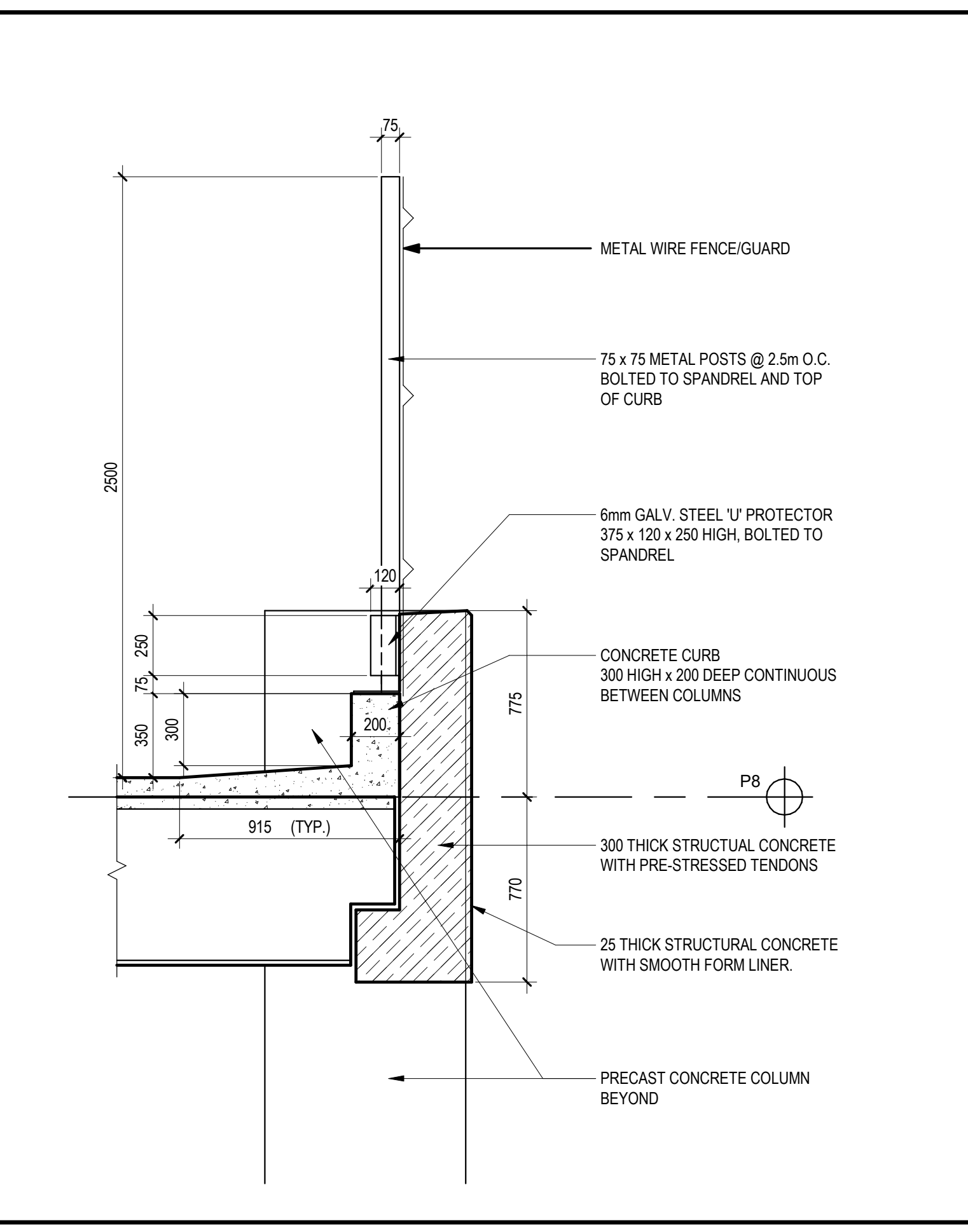
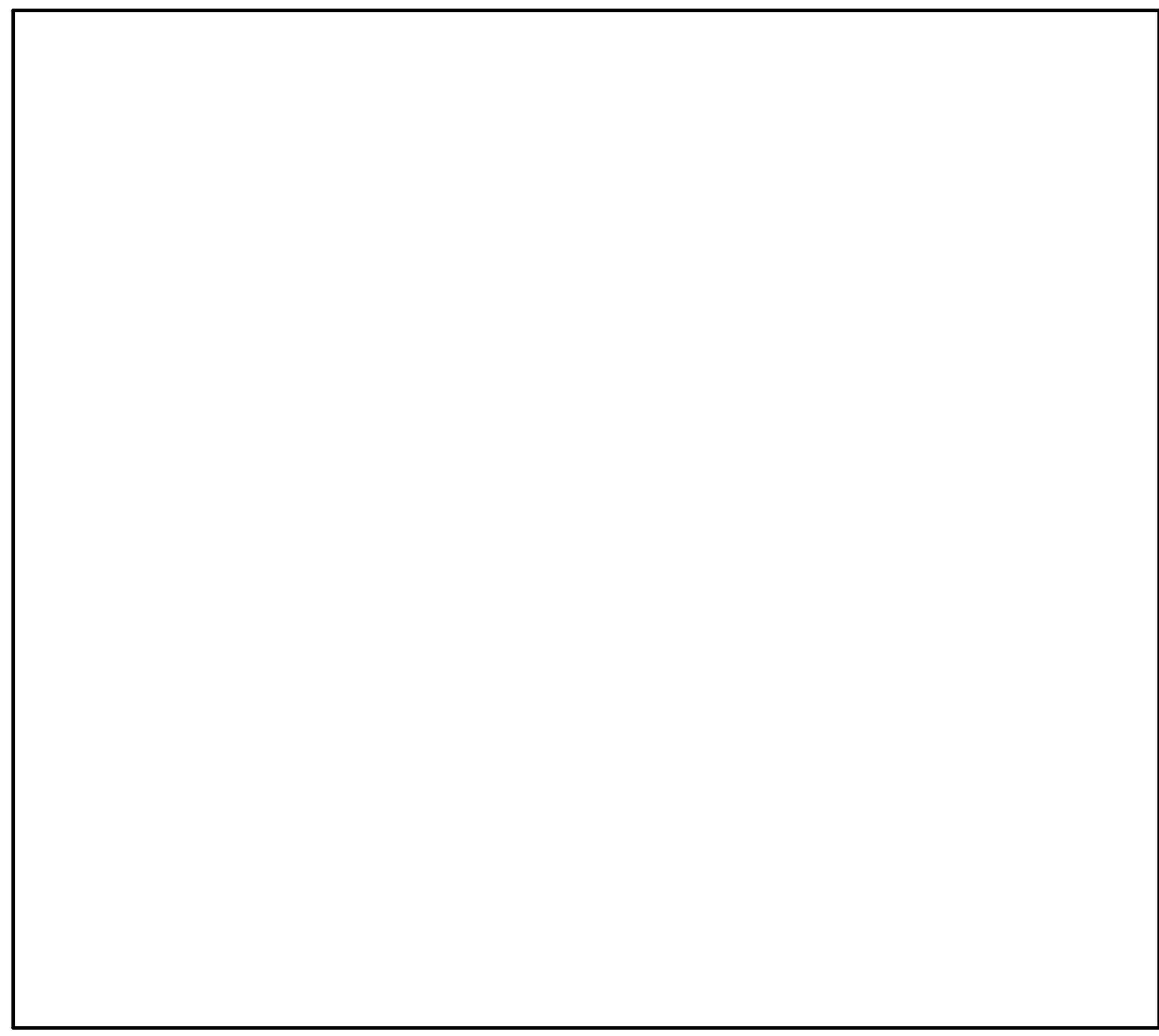


ISSUED FOR

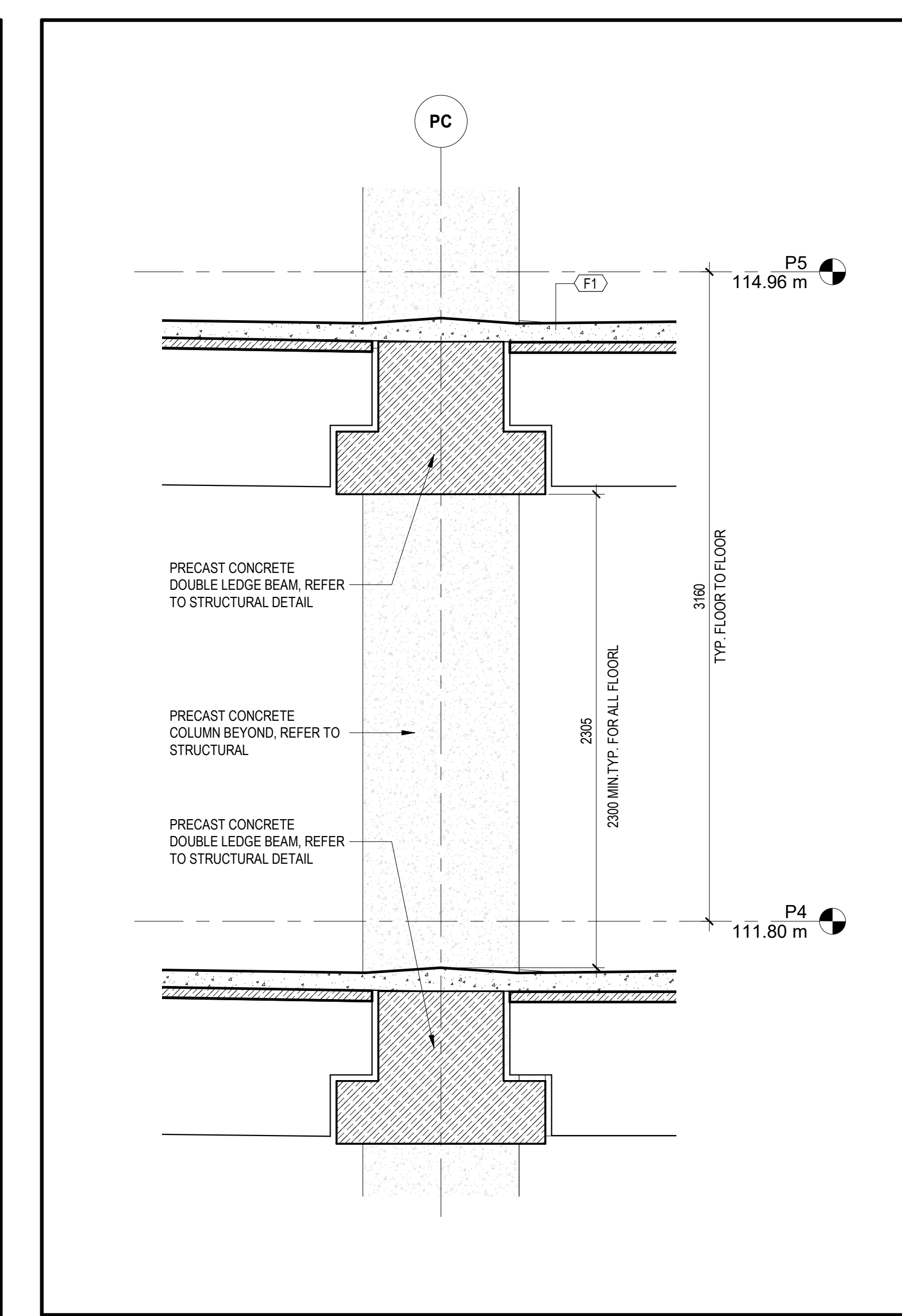
1	2021-05-20	SCHEMATIC DESIGN
2	2021-06-25	CA 50%
3	2021-07-23	100% DESIGN DEVELOPMENT QA
4	2021-08-06	BID BP01
5	2021-08-06	BUILDING PERMIT
6	2021-08-06	SITE PLAN APPROVAL



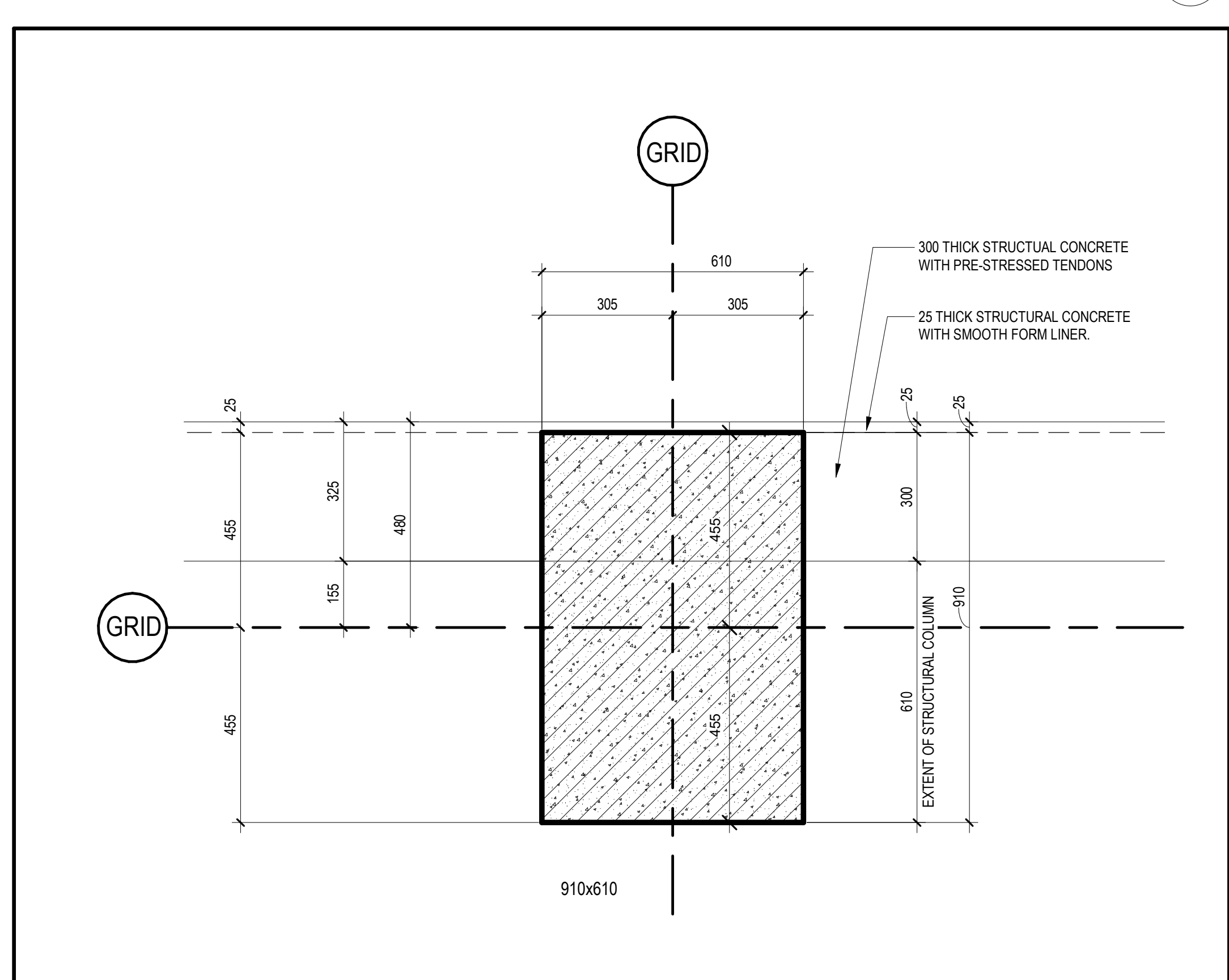
SECTION DETAIL - LEVEL P8 - TYPICAL FALL PROTECTION  
 SCALE: 1:20 A701



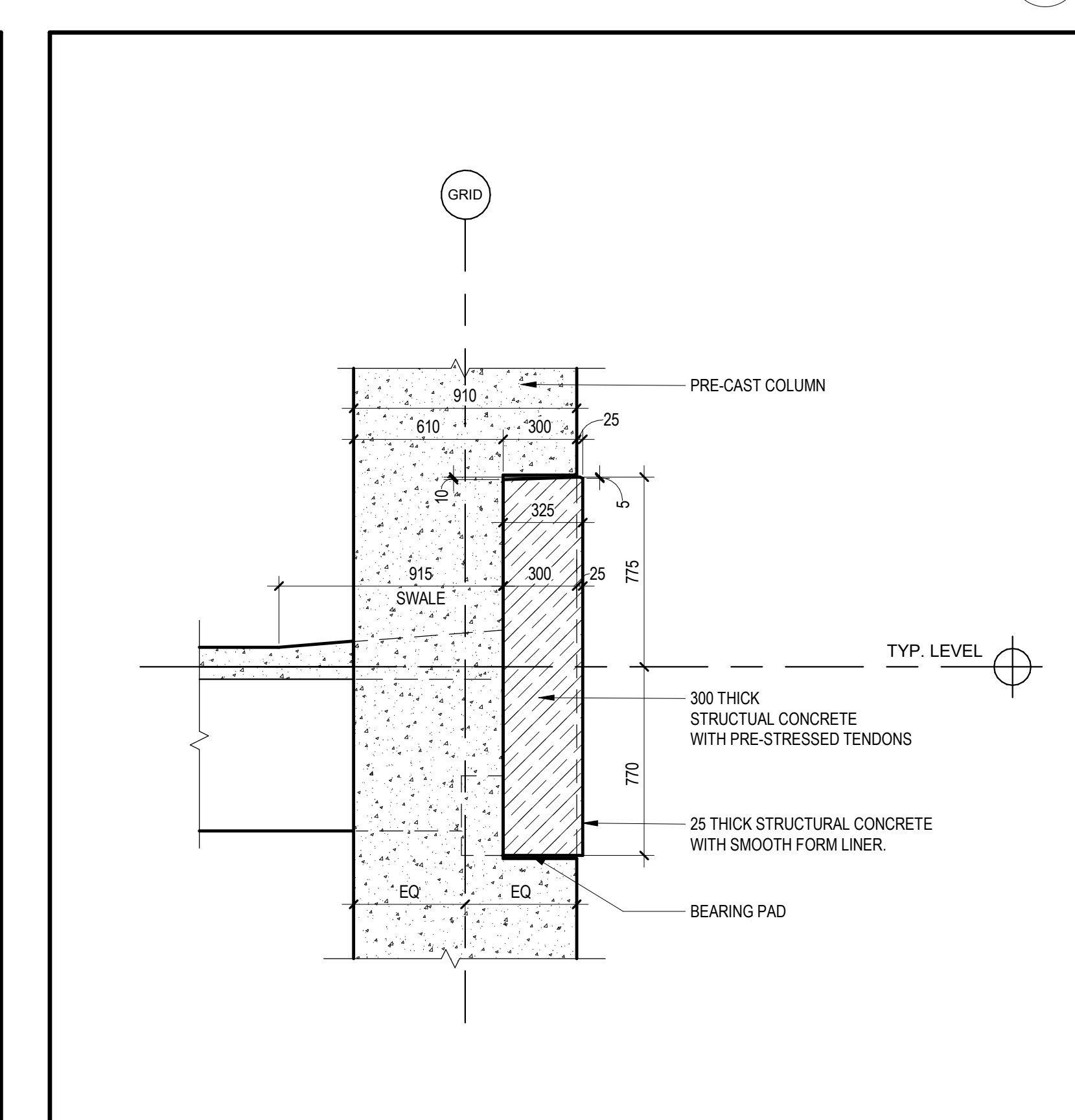
SECTION DETAIL - TYPICAL LOAD BEARING SPANDEL  
 SCALE: 1:20 A701



WALL SECTION DETAIL AT DOUBLE LEDGE BEAM (TYP.)  
 SCALE: 1:20 A701



PLAN DETAIL - TYPICAL COLUMN  
 SCALE: 1:10 A701

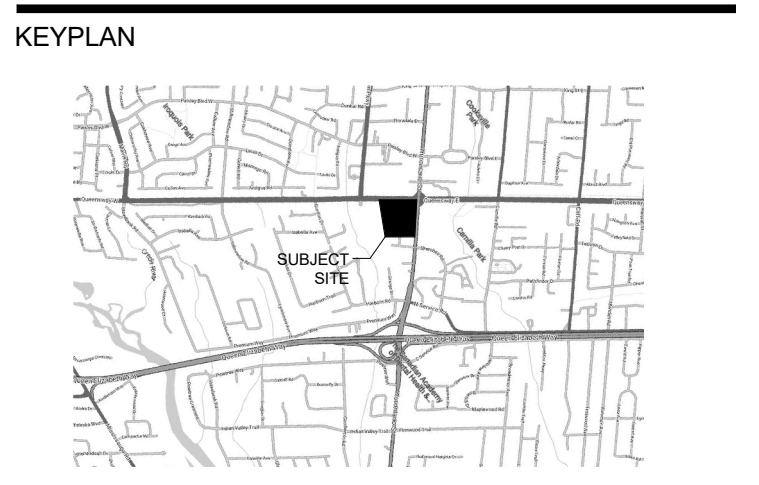


SECTION DETAIL - TYPICAL NON-LOAD BEARING SPANDEL  
 SCALE: 1:20 A701

**METRIC**  
 THIS DRAWING IS COPYRIGHTED AND MUST NOT BE USED, REPRODUCED, OR REVISED WITHOUT WRITTEN PERMISSION. VERIFY DIMENSIONS. DO NOT SCALE THIS DRAWING.  
 REPORT INCONSISTENCIES AND OMISSIONS TO THE CONSULTANT FOR CLARIFICATION BEFORE COMMENCING WITH THE WORK. DEVIATIONS FROM THE CONTRACT DOCUMENTS WITHOUT WRITTEN APPROVAL FROM THE CONSULTANT ARE SUBJECT TO CORRECTION AT THE CONTRACTOR'S EXPENSE.

- CLIENT**  
 TRILLIUM HEALTH PARTNERS  
 150 DUFFERIN DR. ET/OBISCO  
 TORONTO, ON M6C 1A5  
 TEL: (416) 294-8611 WEBSITE: trilliumhealthpartners.ca
- CONSTRUCTION MANAGER**  
 KENADAN CONTRACTING LTD.  
 7881 BERRYBROOK DRIVE  
 MISSISSAUGA, ON L5N 0G5  
 TEL: (905) 910-2680 WEBSITE: www.kenadan.com/
- ARCHITECT & PRIME CONSULTANT**  
 DIALOG  
 35 JOHN STREET, SUITE 500  
 TORONTO, ON M5V 2S8  
 TEL: (416) 966-0220 WEBSITE: dialogdesign.ca
- STRUCTURAL ENGINEER**  
 DIALOG
- MECHANICAL ENGINEER**  
 DIALOG
- ELECTRICAL ENGINEER**  
 DIALOG
- LANDSCAPE ARCHITECT**  
 DIALOG
- CIVIL ENGINEER**  
 MTE CONSULTANTS INC.  
 1018 SUTTON DRIVE, UNIT A  
 BURLINGTON, ON L7R 1B6  
 TEL: (905) 639-2262 WEBSITE: mte85.com
- SECURITY**  
 THE ATARIAN GROUP INC.  
 288-180 WOODWARD DRIVE  
 OTTAWA, ON K2B 2R7  
 TEL: (613) 617-5999 WEBSITE: theatariangroup.com
- SIGNAGE AND WAYFINDING**  
 ENTRIO  
 13 HARBOUR SQUARE, SUITE 202  
 TORONTO, ON M5J 2G2  
 TEL: (416) 368-6988 WEBSITE: entrio.com
- VIBRATION, NOISE, ACOUSTICS**  
 SWALLOW ACOUSTICS CONSULTANTS LTD.  
 23366 REVELS AVENUE  
 MISSISSAUGA, ON L5G 4S5  
 TEL: (905) 271-1868 WEBSITE: thortontomasatl.com
- BUILDING CODE**  
 LRI ENGINEERING INC.  
 171 UNIVERSITY AVE. 2ND FLOOR, BOX 1  
 TORONTO, ON M5H 1B3  
 TEL: (416) 515-9331 WEBSITE: lrifire.com
- VERTICAL TRANSPORTATION**  
 SOBEMAN ENGINEERING INC.  
 85 ST. CLAIR AVENUE WEST, SUITE 205  
 TORONTO, ON M5V 1T7  
 TEL: (416) 323-2133 WEBSITE: sobemanengineering.com
- HARDWARE**  
 SPYDER SC  
 35 HILDA RD  
 WOODBRIDGE, ON L4H 3M5  
 TEL: (847) 271-6489 WEBSITE: spyder-sc.com

- KEYPLAN**
- 
- SEAL**



**THP M-SITE HOSPITAL PARKING STRUCTURE**

MISSISSAUGA HOSPITAL  
 100 QUEENSWAY WEST  
 MISSISSAUGA, ONTARIO  
 L5B 1B8

**DETAILS**

DRAWN: Author CHECKED: Checker  
 PLOT DATE: 8/6/2021 11:29:43 AM