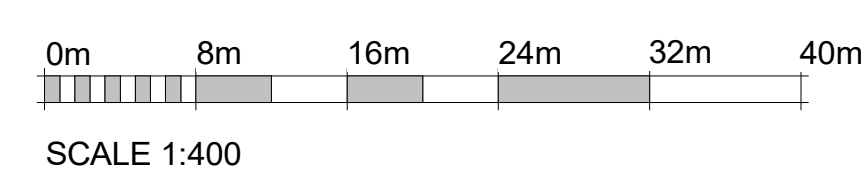


EASEMENT LEGEND

INSTRUMENT	IN FAVOUR OF	PURPOSE	LEGAL DESCRIPTION OF LAND
E-1 VS56621	THE CORPORATION OF THE TOWNSHIP OF TORONTO	SEWERS AND DRAINS	PART OF LOT 7, REGISTERED PLAN E-20
E-2 VS56620	THE CORPORATION OF THE TOWNSHIP OF TORONTO	SEWERS AND DRAINS	PART OF LOT 7, REGISTERED PLAN E-20
E-3 R0424622	DEVILLE INVESTMENT LIMITED	SEWERS AND DRAINAGE	PART OF LOT 7, REGISTERED PLAN E-20
E-4 VS37862	THE CORPORATION OF THE TOWNSHIP OF TORONTO	SEWERS AND DRAINS	PART OF LOT 7, REGISTERED PLAN E-20 PART OF BLOCK A, REGISTERED PLAN S71
E-5 VS1875	THE CORPORATION OF THE TOWNSHIP OF TORONTO (CITY OF MISSISSAUGA)	STORM & SANITARY SEWERS	PART OF BLOCK A, REGISTERED PLAN S71
E-6 VS1875 (NOTICE OF CLAIM BY INSTRUMENT PR129654)	THE CORPORATION OF THE TOWNSHIP OF TORONTO (CITY OF MISSISSAUGA)	STORM & SANITARY SEWERS	PART OF BLOCK A, REGISTERED PLAN S71
E-7 TT188740 (NOTICE OF CLAIM BY INSTRUMENT PR954839)	THE CORPORATION OF THE TOWNSHIP OF TORONTO	STORM & SANITARY SEWERS	PART OF LOT 1, RANGE 3 CREDIT INDIAN RESERVE
E-8 PR1297654	REGION OF PEEL	STORM & SANITARY SEWERS	PART OF BLOCK A, REGISTERED PLAN S71
E-9 VS11473	THE CORPORATION OF THE TOWNSHIP OF TORONTO	STORM & SANITARY SEWERS	PART OF BLOCK A, REGISTERED PLAN S71
E-10 PR648796	THE CORPORATION OF THE TOWNSHIP OF MISSISSAUGA	NATURAL PROTECTION	PART OF LOT 7, REGISTERED PLAN E-20, PART OF BLOCK A, REGISTERED PLAN S71 DESIGNATED AS PLANS 1, 2, 3, 4, 5, 6, & 7 ON REFERENCE PLAN 43R-0319
E-11 PR2334281	REGION OF PEEL	DRAINS & SANITARY SEWERS	PART OF LOTS 5 & 6 PLAN E-20, PART 2 43R 35100 SUBJECT TO AN EASEMENT AS IN INSTRUMENT TT188714
E-12 PR111315	REGION OF PEEL	DRAINS & SANITARY SEWERS	PART OF LOTS 5 & 6 PLAN E-20, DESIGNATED AS PART 13 ON PLAN 43R-3743; CITY OF MISSISSAUGA
E-13 TT188740	THE CORPORATION OF THE TOWNSHIP OF TORONTO	EASEMENT ON, OVER UNDER AND THROUGH LANDS TO CONSTRUCT, INSTALL, OPERATE MAINTAIN STORM AND SANITARY SEWERS	PART OF LOTS 6 AND 7, REGISTERED PLAN E-20 PART OF LOT 1, RANGE 3 CREDIT INDIAN RESERVE
E-14 R01031865	TRILLIUM HEALTH PARTNERS	RIGHT OF WAY	PART OF LOT 16, CONCESSION 1 SOUTH OF DUNDAS STREET AND PART OF LOT 1, RANGE 3, CREDIT INDIAN RESERVE CITY OF MISSISSAUGA, REGIONAL MUNICIPALITY OF PEEL BEING PARTS 6, 7, & 8 ON PLAN 43R-1373
E-15 PR940313	HER MAJESTY THE QUEEN IN RIGHT OF ONTARIO AS REPRESENTED BY THE MINISTER OF PUBLIC INFRASTRUCTURE RENEWAL	BY-LAW TO STOP UP AND CLOSE PUBLIC HIGHWAY LANDS	PART OF LOT 1, RANGE 3 CREDIT INDIAN RESERVE, PART OF LOT 16, CONCESSION 1 SOUTH OF DUNDAS STREET
E-16 PT1222724	HER MAJESTY THE QUEEN IN RIGHT OF ONTARIO AS REPRESENTED BY THE MINISTER OF PUBLIC INFRASTRUCTURE RENEWAL	DRAINS & SANITARY SEWERS	PART OF LOT 1, RANGE 3 CREDIT INDIAN RESERVE, PART OF LOT 16, CONCESSION 1 SOUTH OF DUNDAS STREET
E-17 TT105462	HYDRO ELECTRIC COMMISSION OF THE TOWNSHIP OF TORONTO (TORONTO HYDRO)	EASEMENT (RIGHT OF WAY OVER OR UNDER LAND WHICH OVERHEAD LINES, POLES, ANCHORS ETC. AND UNDERGROUND CABLES MAY BE LOCATED)	PART OF LOT 1, RANGE 3 CREDIT INDIAN RESERVE, CITY OF MISSISSAUGA
E-18 PT1014487	HYDRO ONE NETWORKS INC.	EASEMENT (RIGHT OF WAY IN, THROUGH, UNDER, OVER, ACROSS, ALONG LANDS FOR ELECTRICAL TRANSMISSION AND COMMUNICATIONS SYSTEM)	PART OF LOT 1, RANGE 3 CREDIT INDIAN RESERVE, CITY OF MISSISSAUGA

PROPERTY LINE LEGEND

PROPERTY	OWNED BY
P-1	HER MAJESTY THE QUEEN IN RIGHT OF ONTARIO AS REPRESENTED BY THE MINISTER OF PUBLIC INFRASTRUCTURE RENEWAL
P-2	HER MAJESTY THE QUEEN IN RIGHT OF ONTARIO AS REPRESENTED BY THE MINISTER OF ECONOMIC DEVELOPMENT, EMPLOYMENT AND INFRASTRUCTURE
P-3	THE REGIONAL MUNICIPALITY OF PEEL
P-4	THE CORPORATION OF THE CITY OF MISSISSAUGA
P-5	METROLIX



ISSUED FOR
1 2022-02-24 SP 21-156 W7 REVISION 1

METRIC
THIS DRAWING IS COPYRIGHTED AND MUST NOT BE USED, REPRODUCED, OR REVISED WITHOUT WRITTEN PERMISSION.
ALL DIMENSIONS ARE IN MILLIMETERS UNLESS OTHERWISE NOTED.
VERIFY DIMENSIONS.
DO NOT SCALE THIS DRAWING.
REPORT INCONSISTENCIES AND OMISSIONS TO THE CONSULTANT FOR CLARIFICATION BEFORE COMMENCING WITH THE WORK.
DEVIATIONS FROM THE CONTRACT DOCUMENTS WITHOUT WRITTEN APPROVAL FROM THE CONSULTANT ARE SUBJECT TO CORRECTION AT THE CONTRACTOR'S EXPENSE.

CLIENT
TRILLIUM HEALTH PARTNERS
155 SHERWAY DR. ETOBICOKE
TORONTO, ON M9C 1A5
TEL: (416) 298-9871 WEBSITE: trilliumhealthpartners.ca

CONSTRUCTION MANAGER
KENADIAN CONTRACTING LTD.
7481 DERRYPREST DRIVE
MISSISSAUGA, ON L5W 0G5
TEL: (905) 670-2660 WEBSITE: www.kenadcan.com

ARCHITECT & PRIME CONSULTANT
DIALOG
35 JOHN STREET, SUITE 500
TORONTO, ON M5V 2G9
TEL: (416) 966-0220 WEBSITE: dialogdesign.ca

STRUCTURAL ENGINEER
DIALOG

MECHANICAL ENGINEER
DIALOG

ELECTRICAL ENGINEER
DIALOG

LANDSCAPE ARCHITECT
DIALOG

CIVIL ENGINEER
MTE CONSULTANTS INC.
1018 SUTTON DRIVE, UNIT A
BURLINGTON, ON L7L 6B8
TEL: (905) 639-2532 WEBSITE: mte85.com

SECURITY
THE ATIAN GROUP INC.
208-1820 WOODWARD DRIVE
OTTAWA, ON K2C 3P7
TEL: (613) 817-0909 WEBSITE: theatiangroup.com

SIGNAGE AND WAYFINDING
ENTRO
31 HAMBOUR SQUARE, SUITE 202
TORONTO, ON M5J 2K2
TEL: (416) 368-6988 WEBSITE: entro.com

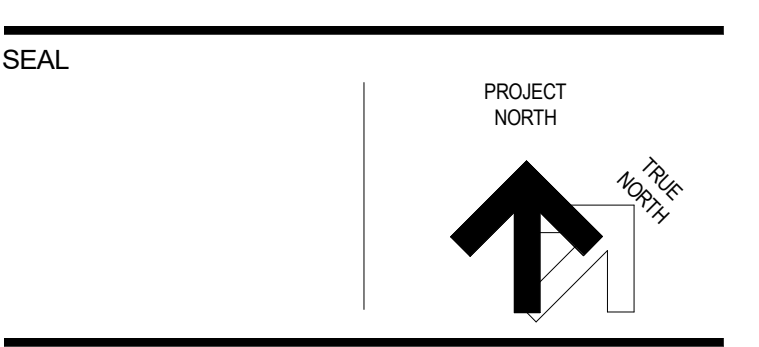
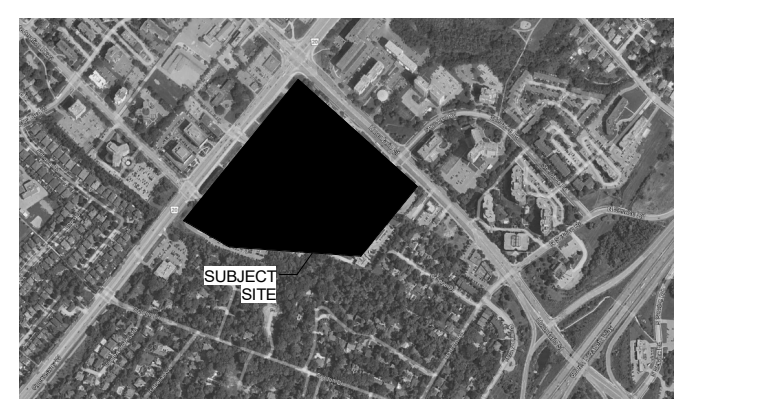
VIBRATION, NOISE, ACOUSTICS
THORNTONMASETTI
23-366 REVELS AVENUE
MISSISSAUGA, ON L5G 4S5
TEL: (905) 271-7889 WEBSITE: thortonmasetti.com

BUILDING CODE
LR ENGINEERING INC.
170 UNIVERSITY AVE., 3RD FLOOR, BOX 1
TORONTO, ON M5H 3E3
TEL: (416) 515-9321 WEBSITE: lrfe.com

VERTICAL TRANSPORTATION
SOBERMAN ENGINEERING INC.
55 ST. CLAIR AVENUE WEST, SUITE 205
TORONTO, ON M5V 2T7 WEBSITE: sobermanengineering.com

HARDWARE
SPYDEC
35 HILDA RD.
WOODBRIDGE, ON L4H 3N6
TEL: (847) 271-6489 WEBSITE: spydec.com

KEYPLAN



THP M-SITE HOSPITAL PARKING STRUCTURE

MISSISSAUGA HOSPITAL
107 QUEENSWAY WEST
MISSISSAUGA, ONTARIO
L5B 1B8

EASEMENT & PROPERTY LEGEND

DRAWN: Author CHECKED: Checker
PLOT DATE: 2/24/2022 2:13:36 PM

A120a